

# **Appendix D**

---

## **Visual Simulations**

**Photo Location #1**





Existing Conditions

Viewpoint Details

Viewpoint elevation = 6,713'

Photograph taken by Grant Kaye using a Canon EOS 5D Mark III camera on 03/30/2016 at 11:29 am, with a 42mm focal length to emulate the human eye.

Prepared By:

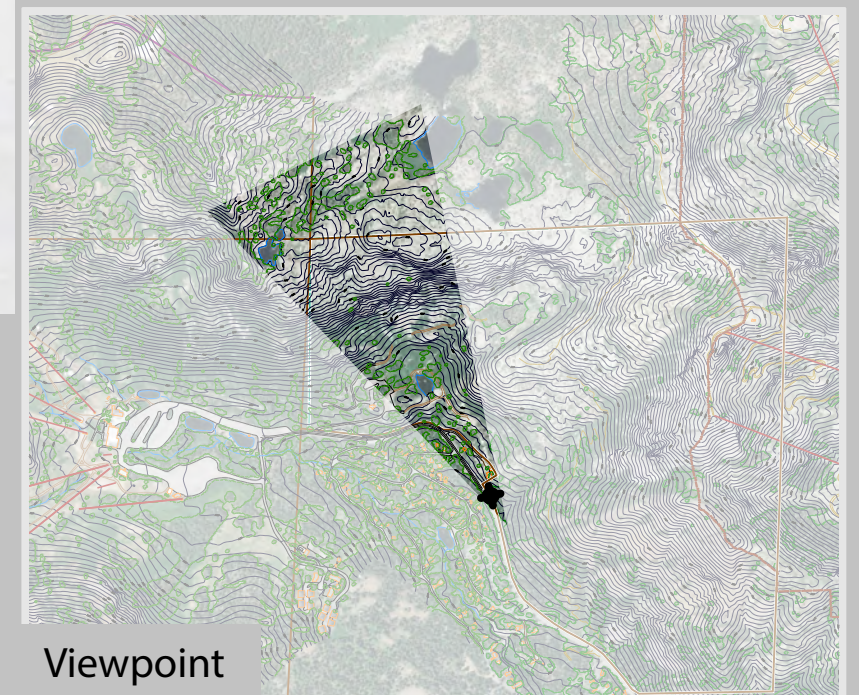


September 2018

**VIEW 1**  
**ALPINE MEADOWS ROAD**  
**EXISTING CONDITIONS**

B2B GONDOLA EIS

FIGURE D-1a



Viewpoint





Alternative 2

*Viewpoint Details*

*Viewpoint elevation = 6,713'*

*Photograph taken by Grant Kaye using a Canon EOS 5D Mark III camera on 03/30/2016 at 11:29 am, with a 42mm focal length to emulate the human eye.*

Prepared By:



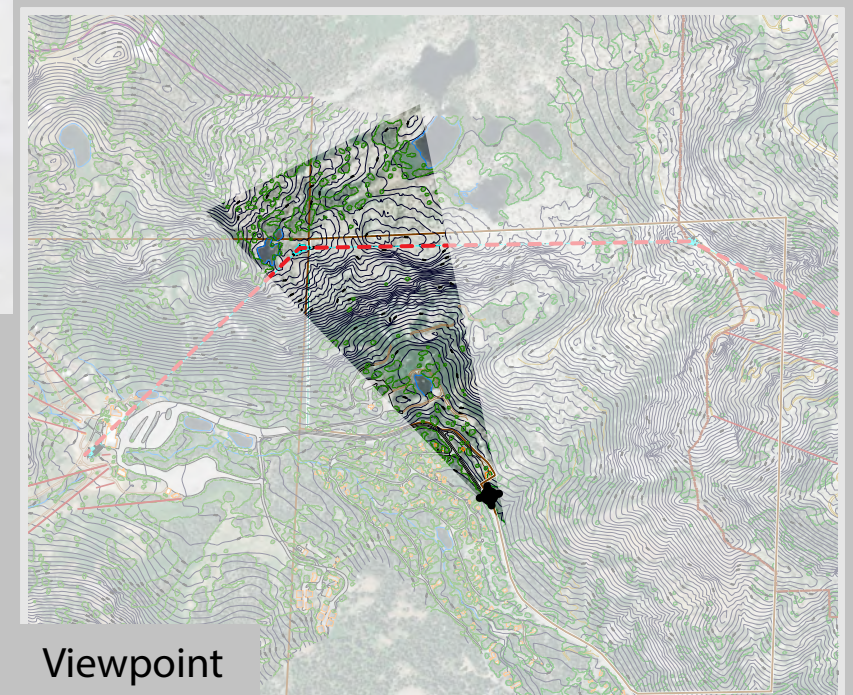
September 2018



**VIEW 1  
ALPINE MEADOWS ROAD  
ALTERNATIVE 2  
SIMULATED CONDITIONS**

B2B GONDOLA EIS

FIGURE D-1b



Viewpoint





Alternative 3

*Viewpoint Details*

*Viewpoint elevation = 6,713'*

*Photograph taken by Grant Kaye using a Canon EOS 5D Mark III camera on 03/30/2016 at 11:29 am, with a 42mm focal length to emulate the human eye.*

Prepared By:



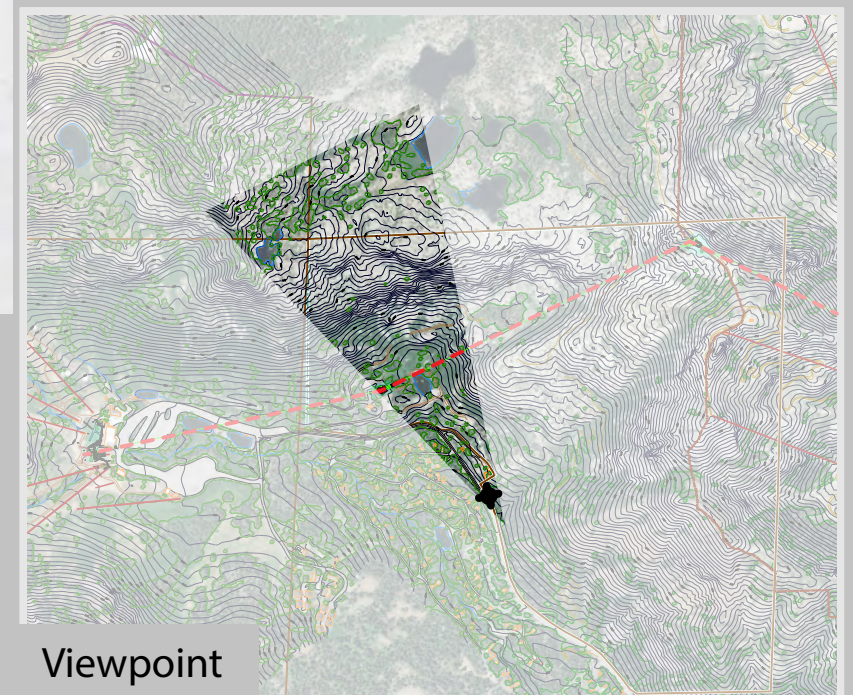
September 2018



**VIEW 1  
ALPINE MEADOWS ROAD  
ALTERNATIVE 3  
SIMULATED CONDITIONS**

B2B GONDOLA EIS

FIGURE D-1c



Viewpoint





Alternative 4

Viewpoint Details

Viewpoint elevation = 6,713'

Photograph taken by Grant Kaye using a Canon EOS 5D Mark III camera on 03/30/2016 at 11:29 am, with a 42mm focal length to emulate the human eye.

Prepared By:

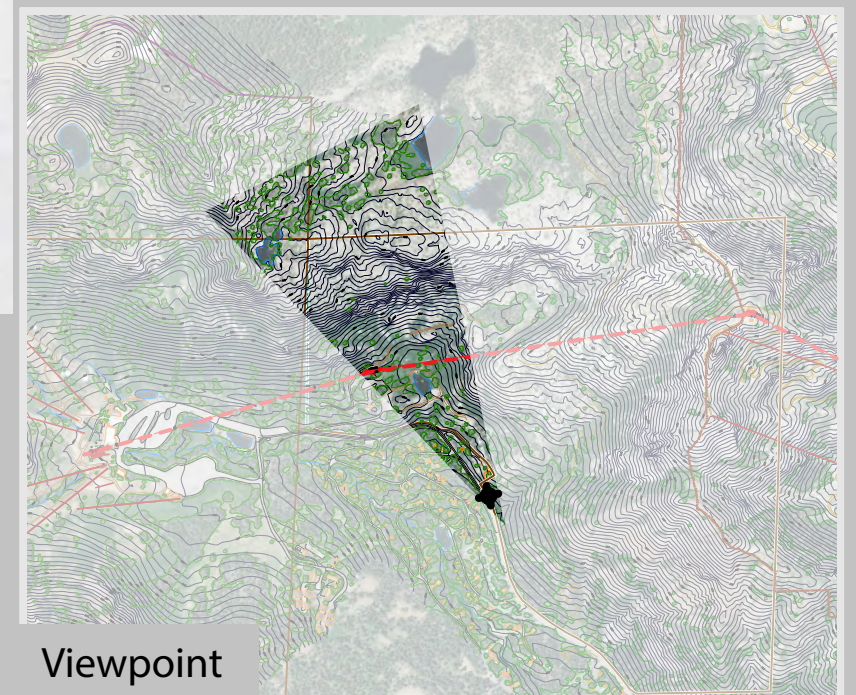


September 2018

**VIEW 1**  
**ALPINE MEADOWS ROAD**  
**ALTERNATIVE 4**  
**SIMULATED CONDITIONS**

B2B GONDOLA EIS

FIGURE D-1d



Viewpoint



## **Photo Location #2**





## **VIEW 2 ALPINE MEADOWS ROAD EXISTING CONDITIONS**

B2B GONDOLA EIS

FIGURE D-2a

Existing Conditions

### *Viewpoint Details*

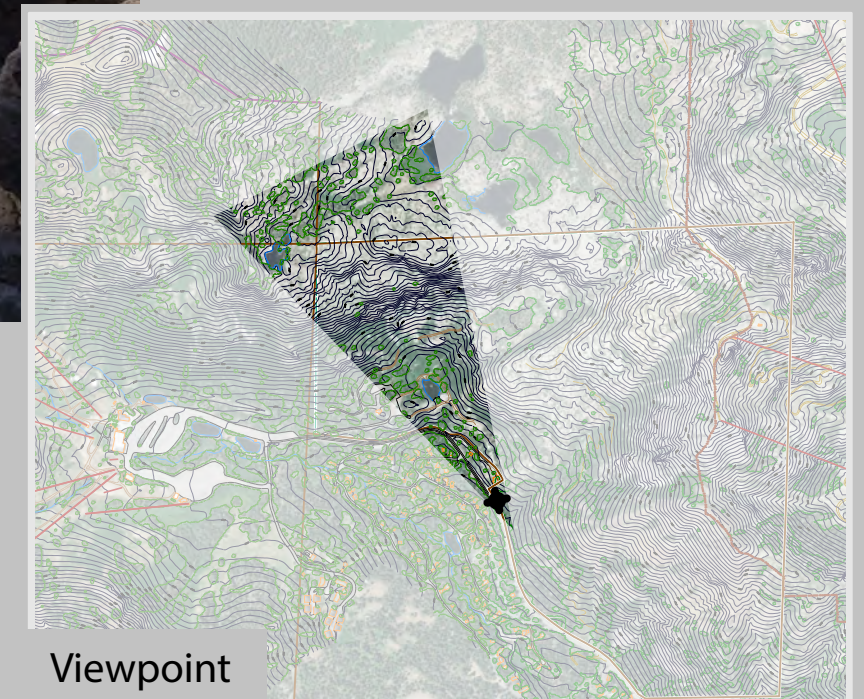
*Viewpoint elevation = 6,713'*

*Photograph taken by Grant Kaye using a Canon EOS 5D Mark III camera on 09/22/2015 at 10:44 am, with a 42mm focal length to emulate the human eye.*

Prepared By:



September 2018



Viewpoint





Alternative 2

#### Viewpoint Details

Viewpoint elevation = 6,713'

Photograph taken by Grant Kaye using a Canon EOS 5D Mark III camera on 03/30/2016 at 11:29 am, with a 42mm focal length to emulate the human eye.

Prepared By:

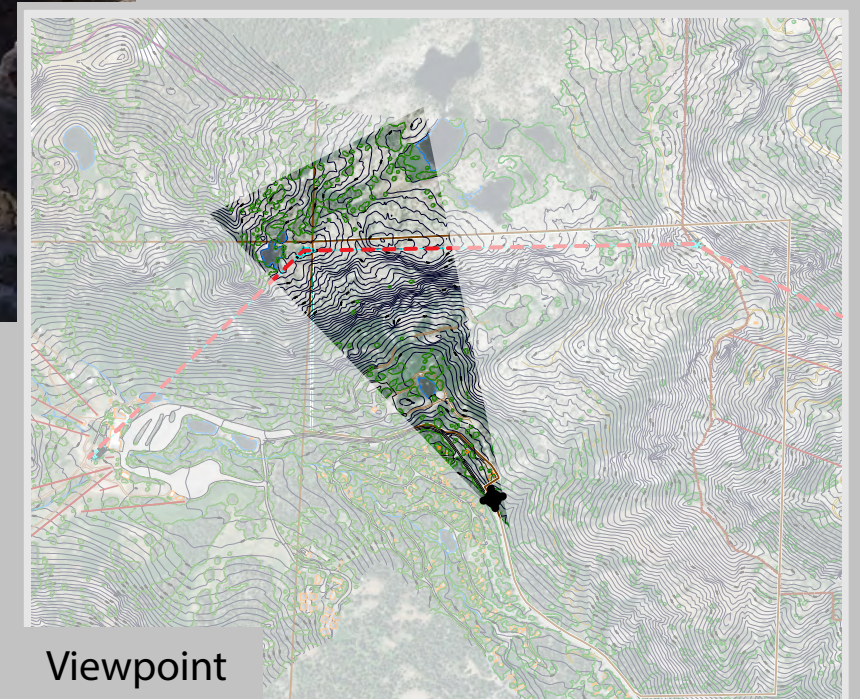


September 2018

## VIEW 2 ALPINE MEADOWS ROAD ALTERNATIVE 2 SIMULATED CONDITIONS

B2B GONDOLA EIS

FIGURE D-2b



Viewpoint





Alternative 3

*Viewpoint Details*

*Viewpoint elevation = 6,713'*

*Photograph taken by Grant Kaye using a Canon EOS 5D Mark III camera on 09/22/2015 at 10:44 am, with a 42mm focal length to emulate the human eye.*

Prepared By:



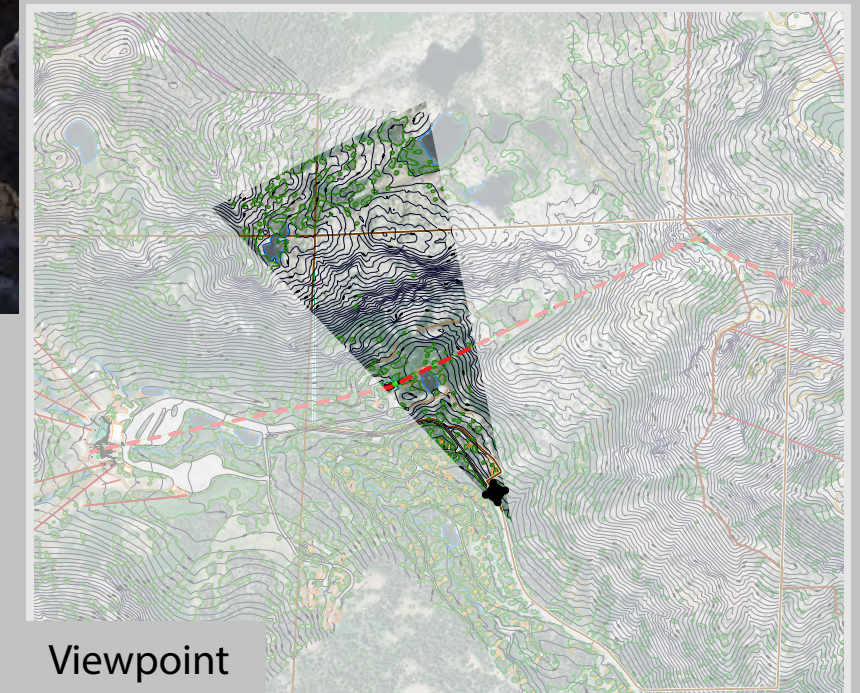
September 2018



**VIEW 2**  
**ALPINE MEADOWS ROAD**  
**ALTERNATIVE 3**  
**SIMULATED CONDITIONS**

B2B GONDOLA EIS

FIGURE D-2c



Viewpoint





Alternative 4

*Viewpoint Details*

*Viewpoint elevation = 6,713'*

*Photograph taken by Grant Kaye using a Canon EOS 5D Mark III camera on 09/22/2015 at 10:44 am, with a 42mm focal length to emulate the human eye.*

Prepared By:



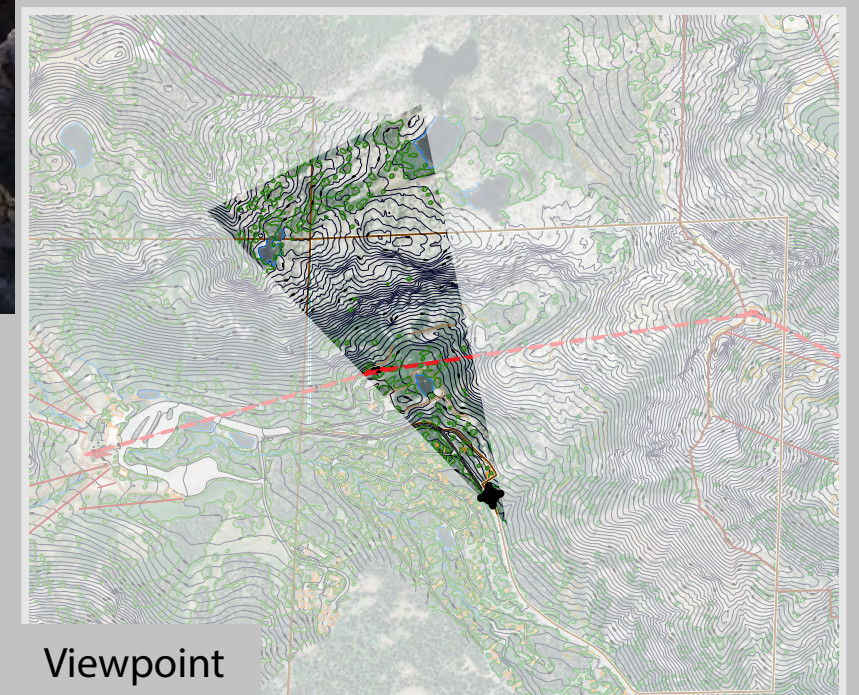
September 2018



**VIEW 2**  
**ALPINE MEADOWS ROAD**  
**ALTERNATIVE 4**  
**SIMULATED CONDITIONS**

B2B GONDOLA EIS

FIGURE D-2d



Viewpoint



## **Photo Location #3**





Existing Conditions

**VIEW 3**  
**CHALET ROAD**  
**EXISTING CONDITIONS**

B2B GONDOLA EIS

FIGURE D-3a

Viewpoint Details

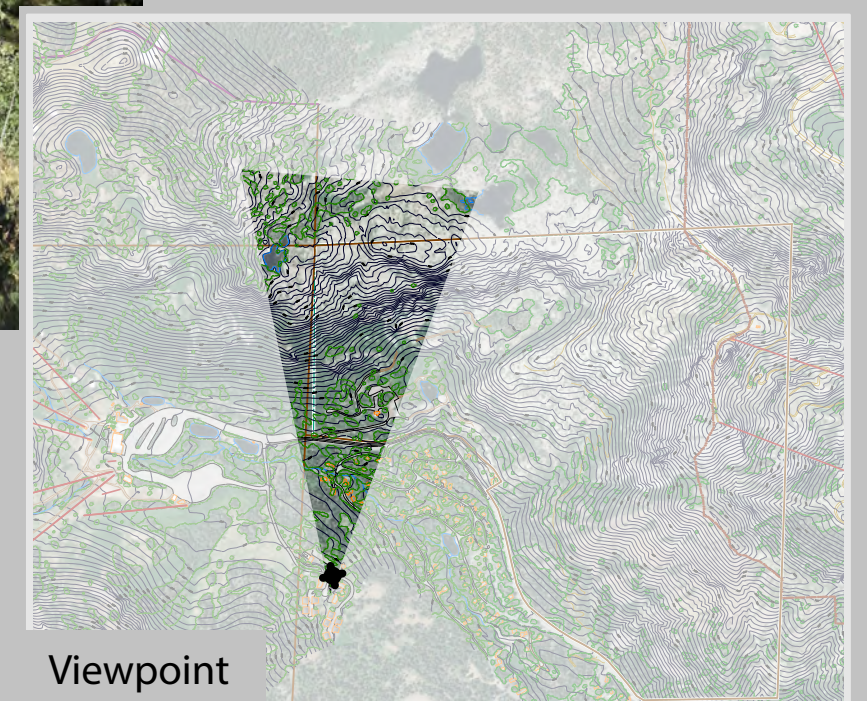
Viewpoint elevation = 6,896'

Photograph taken by Grant Kaye using a Canon EOS 5D Mark III camera on 08/22/2016 at 8:41 am, with a 42mm focal length to emulate the human eye.

Prepared By:



September 2018



Viewpoint





Alternative 2

Viewpoint Details

Viewpoint elevation = 6,896'

Photograph taken by Grant Kaye using a Canon EOS 5D Mark III camera on 08/22/2016 at 8:41 am, with a 42mm focal length to emulate the human eye.

Prepared By:



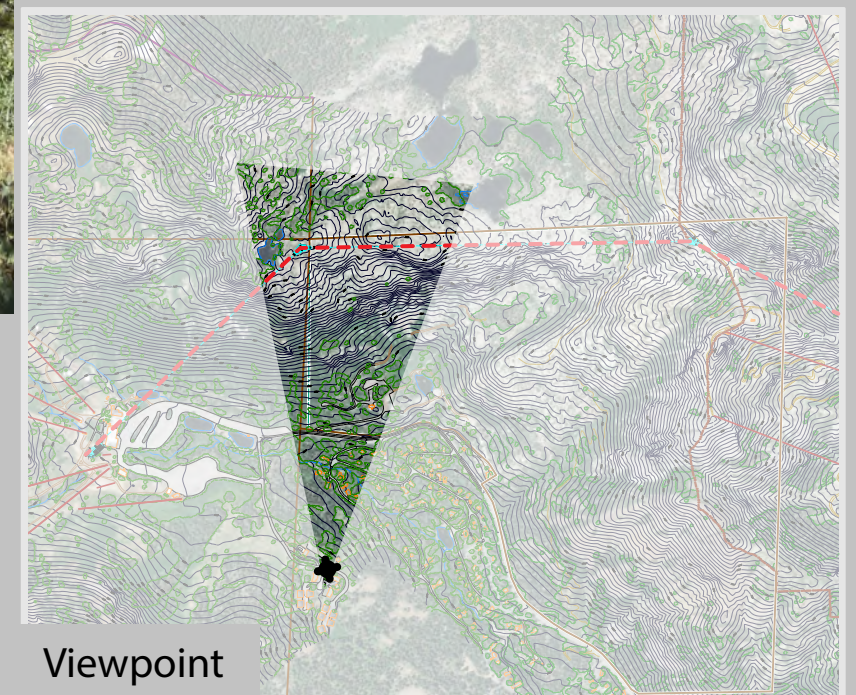
September 2018



**VIEW 3  
CHALET ROAD  
ALTERNATIVE 2  
SIMULATED CONDITIONS**

B2B GONDOLA EIS

FIGURE D-3b



Viewpoint





Alternative 3

**VIEW 3**  
**CHALET ROAD**  
**ALTERNATIVE 3**  
**SIMULATED CONDITIONS**

B2B GONDOLA EIS

FIGURE D-3c

*Viewpoint Details*

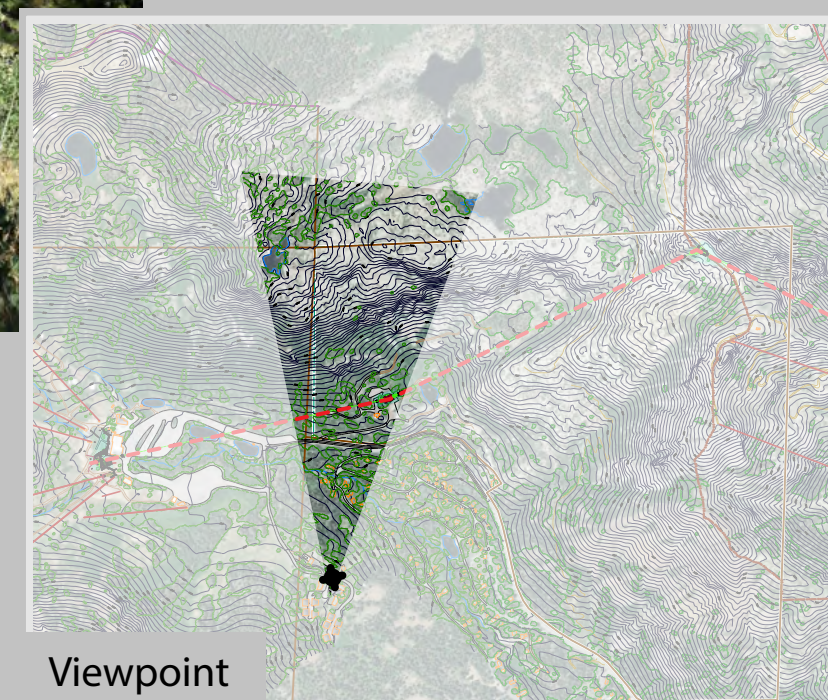
*Viewpoint elevation = 6,896'*

*Photograph taken by Grant Kaye using a Canon EOS 5D Mark III camera on 08/22/2016 at 8:41 am, with a 42mm focal length to emulate the human eye.*

Prepared By:



September 2018



Viewpoint





**VIEW 3**  
**CHALET ROAD**  
**ALTERNATIVE 4**  
**SIMULATED CONDITIONS**

B2B GONDOLA EIS

FIGURE D-3d

Alternative 4

*Viewpoint Details*

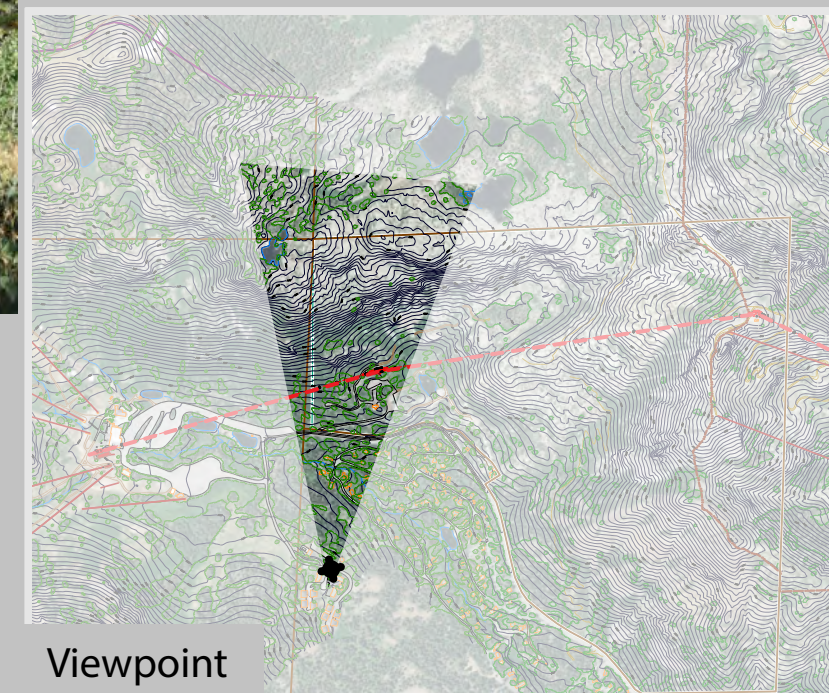
*Viewpoint elevation = 6,896'*

*Photograph taken by Grant Kaye using a Canon EOS 5D Mark III camera on  
08/22/2016 at 8:41 am, with a 42mm focal length to emulate the human eye.*

Prepared By:



September 2018



Viewpoint



## **Photo Location #4**





Existing Conditions

#### Viewpoint Details

Viewpoint elevation = 6,896'

Photograph taken by Grant Kaye using a Canon EOS 5D Mark III camera on 08/17/2017 at 12:02 pm, with a 42mm focal length to emulate the human eye.

Prepared By:

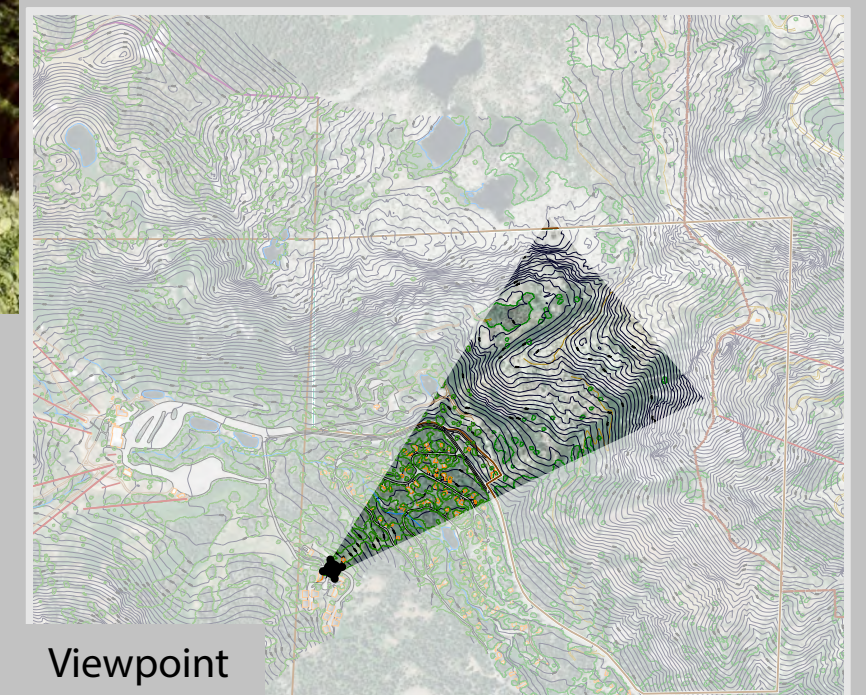


September 2018

## VIEW 4 CHALET ROAD - NORTH WEST EXISTING CONDITIONS

B2B GONDOLA EIS

FIGURE D-4a



Viewpoint





Alternative 2

*Viewpoint Details*

*Viewpoint elevation = 6,896'*

*Photograph taken by Grant Kaye using a Canon EOS 5D Mark III camera on 08/17/2017 at 12:02 pm, with a 42mm focal length to emulate the human eye.*

Prepared By:



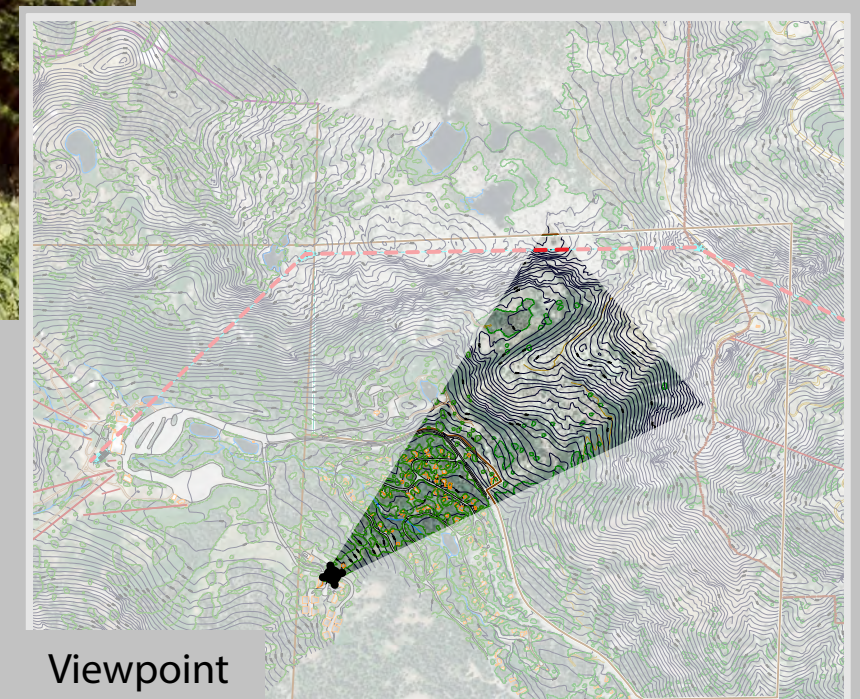
September 2018



**VIEW 4**  
**CHALET ROAD - NORTH WEST**  
**ALTERNATIVE 2**  
**SIMULATED CONDITIONS**

B2B GONDOLA EIS

FIGURE D-4b



Viewpoint





Alternative 3

*Viewpoint Details*

*Viewpoint elevation = 6,896'*

*Photograph taken by Grant Kaye using a Canon EOS 5D Mark III camera on 08/17/2017 at 12:02 pm, with a 42mm focal length to emulate the human eye.*

Prepared By:

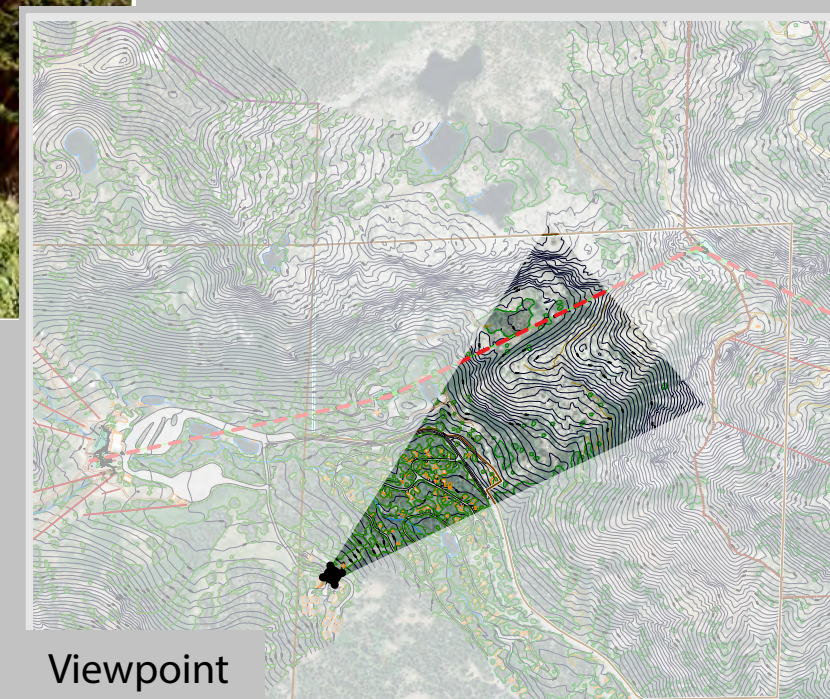


September 2018

**VIEW 4**  
**CHALET ROAD - NORTH WEST**  
**ALTERNATIVE 3**  
**SIMULATED CONDITIONS**

B2B GONDOLA EIS

FIGURE D-4c



Viewpoint





Alternative 4

*Viewpoint Details*

*Viewpoint elevation = 6,896'*

*Photograph taken by Grant Kaye using a Canon EOS 5D Mark III camera on 08/17/2017 at 12:02 pm, with a 42mm focal length to emulate the human eye.*

Prepared By:

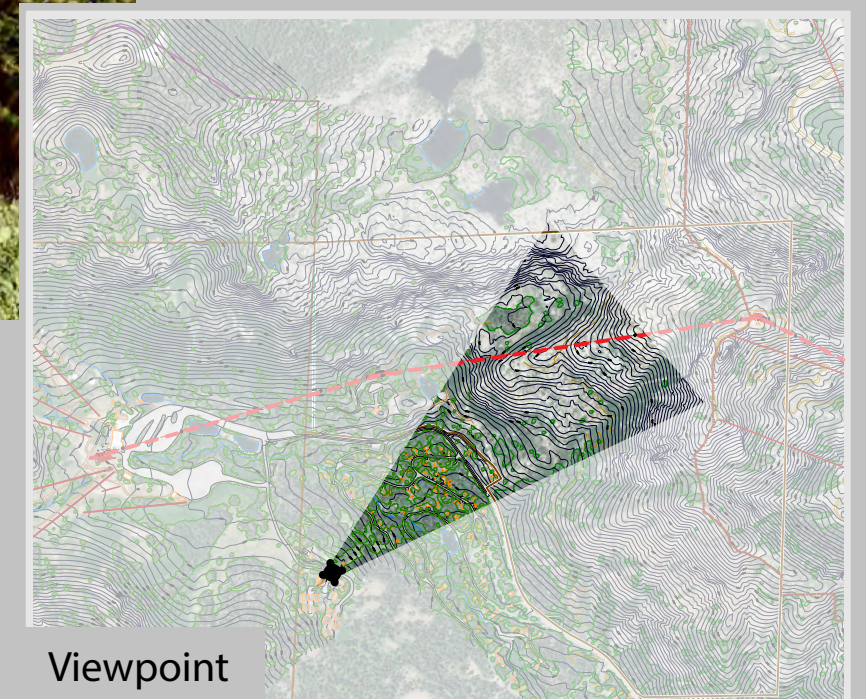


September 2018

**VIEW 4**  
**CHALET ROAD - NORTH WEST**  
**ALTERNATIVE 4**  
**SIMULATED CONDITIONS**

B2B GONDOLA EIS

FIGURE D-4d



Viewpoint



## **Photo Location #5**



**VIEW 5**  
**ALPINE MEADOWS**  
**BASE TERMINAL**  
**EXISTING CONDITIONS**

B2B GONDOLA EIS

FIGURE D-5a



**Existing Conditions**

Viewpoint Details

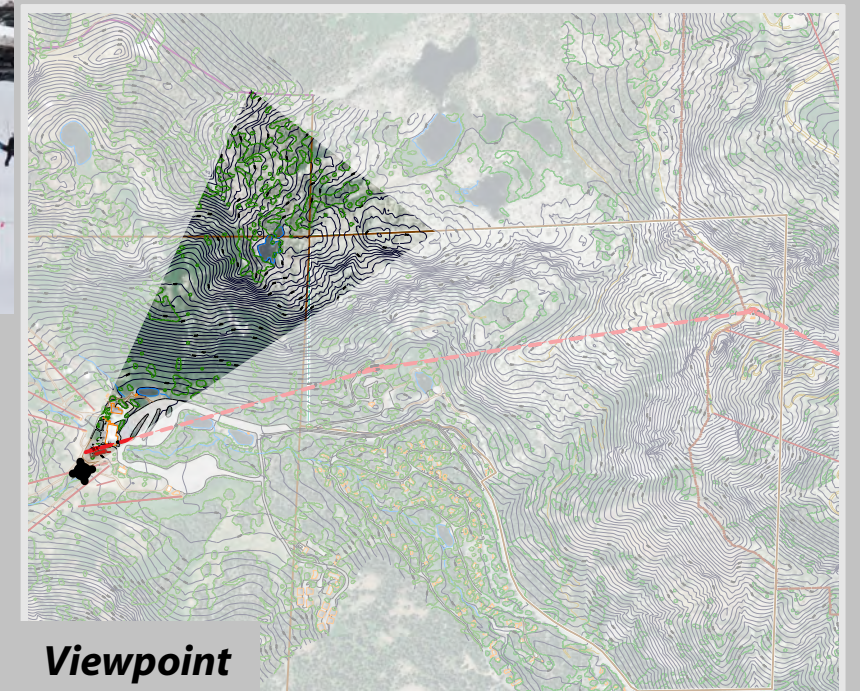
Viewpoint elevation = 6,970'

Photograph taken by Grant Kaye using a Canon EOS 5D Mark III camera on 03/30/2016 at 1:21 pm, with a 42mm focal length to emulate the human eye.

Prepared By:



September 2018



**Viewpoint**



**VIEW 5**  
**ALPINE MEADOWS**  
**BASE TERMINAL**  
**ALTERNATIVE 2**

**SIMULATED CONDITIONS**  
B2B GONDOLA EIS      FIGURE D-5b



Alternative 2

*Viewpoint Details*

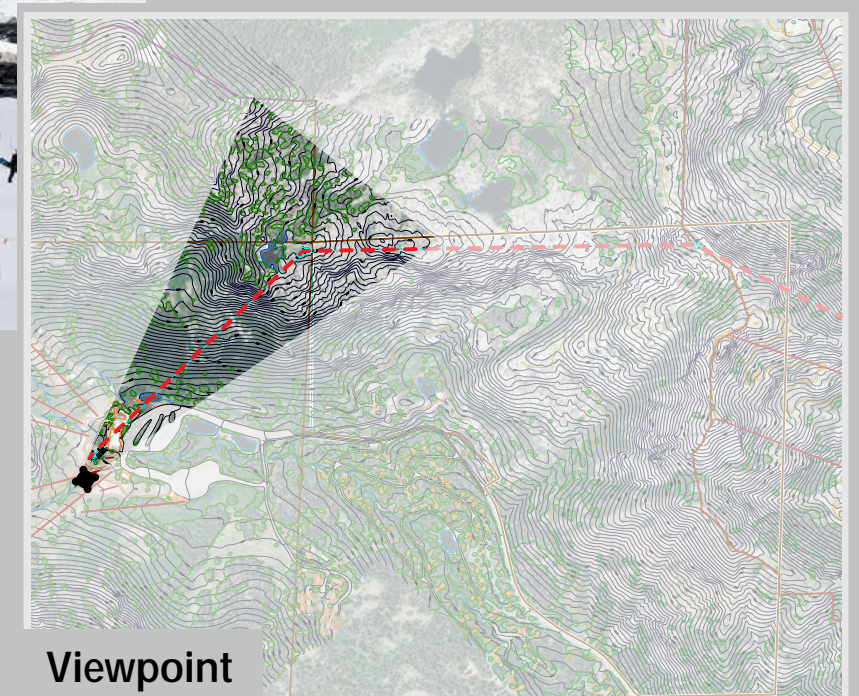
*Viewpoint elevation = 6,970'*

*Photograph taken by Grant Kaye using a Canon EOS 5D Mark III camera on 03/30/2016 at 1:21 pm, with a 42mm focal length to emulate the human eye.*

Prepared By:

 **SE GROUP**

September 2018



Viewpoint



**VIEW 5**  
**ALPINE MEADOWS**  
**BASE TERMINAL**  
**ALTERNATIVE 3**

**SIMULATED CONDITIONS**  
B2B GONDOLA EIS      FIGURE D-5c



**Alternative 3**

*Viewpoint Details*

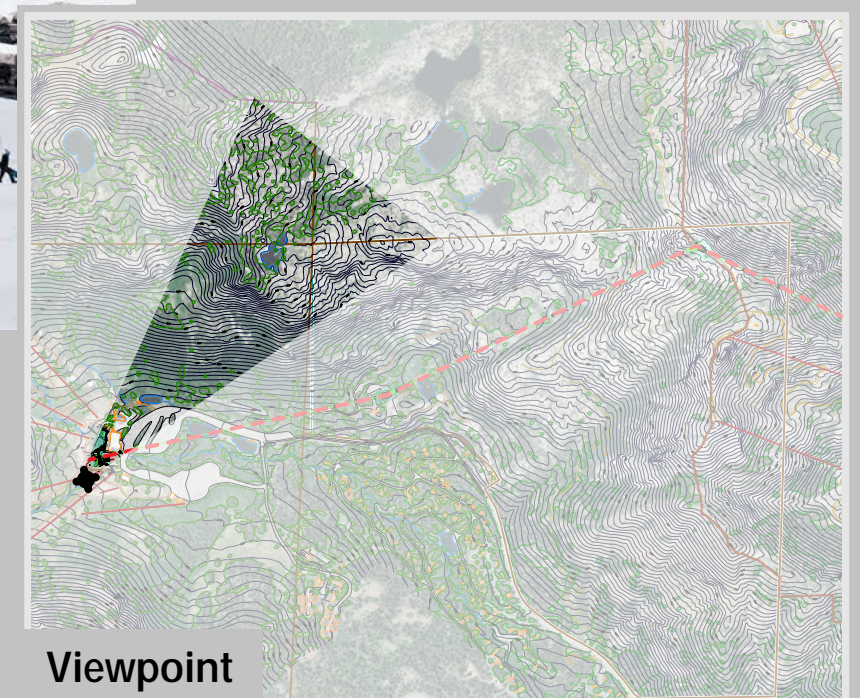
*Viewpoint elevation = 6,970'*

*Photograph taken by Grant Kaye using a Canon EOS 5D Mark III camera on 03/30/2016 at 1:21 pm, with a 42mm focal length to emulate the human eye.*

Prepared By:



September 2018



**Viewpoint**



**VIEW 5**  
**ALPINE MEADOWS**  
**BASE TERMINAL**  
**ALTERNATIVE 4**  
**SIMULATED CONDITIONS**  
B2B GONDOLA EIS      FIGURE D-5d



**Alternative 4**

*Viewpoint Details*

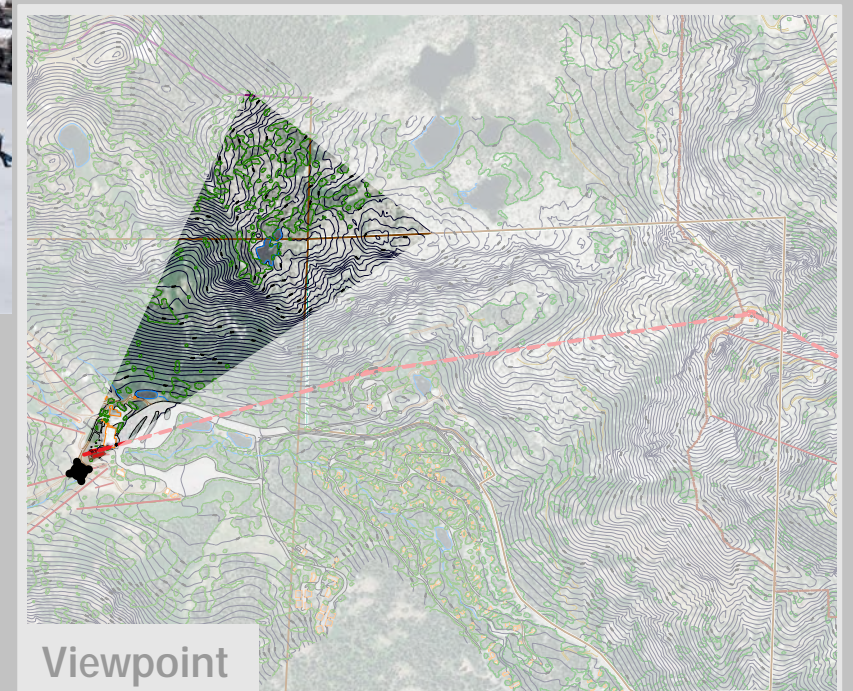
*Viewpoint elevation = 6,970'*

*Photograph taken by Grant Kaye using a Canon EOS 5D Mark III camera on  
03/30/2016 at 1:21 pm, with a 42mm focal length to emulate the human eye.*

Prepared By:



September 2018



**Viewpoint**