



SOURCE: USGS 7.5-Minute Series Santa Cruz Quadrangle

DUDEK

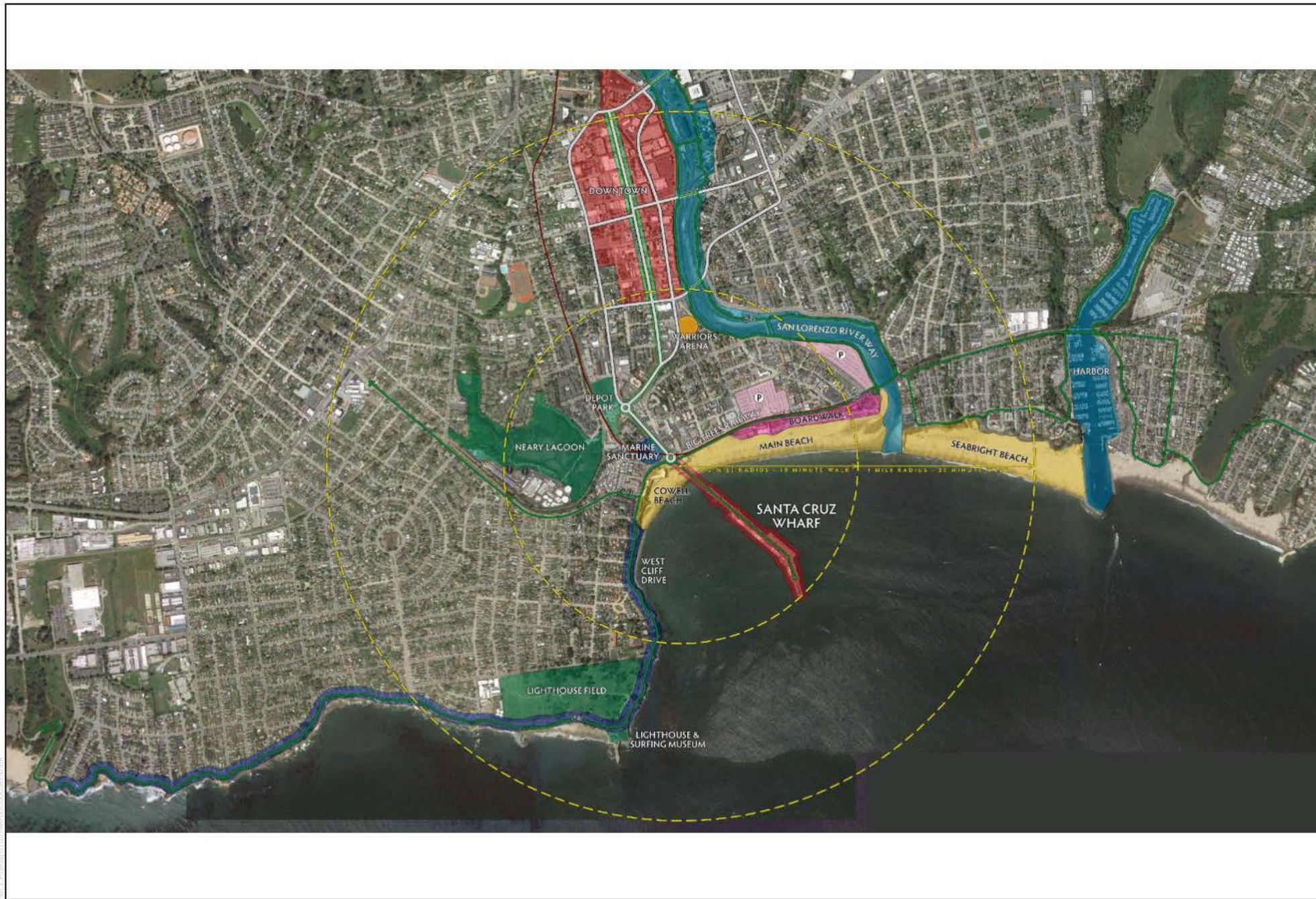


0 1,000 2,000 Feet
0 285 570 Meters
1:24,000

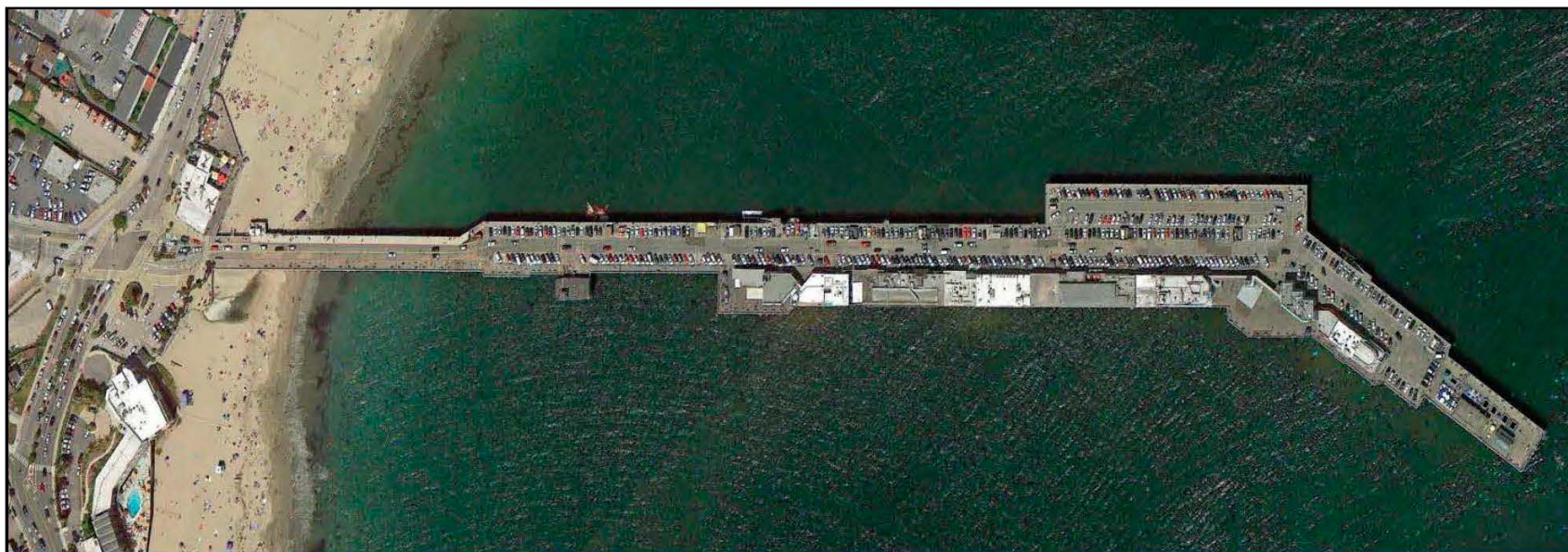
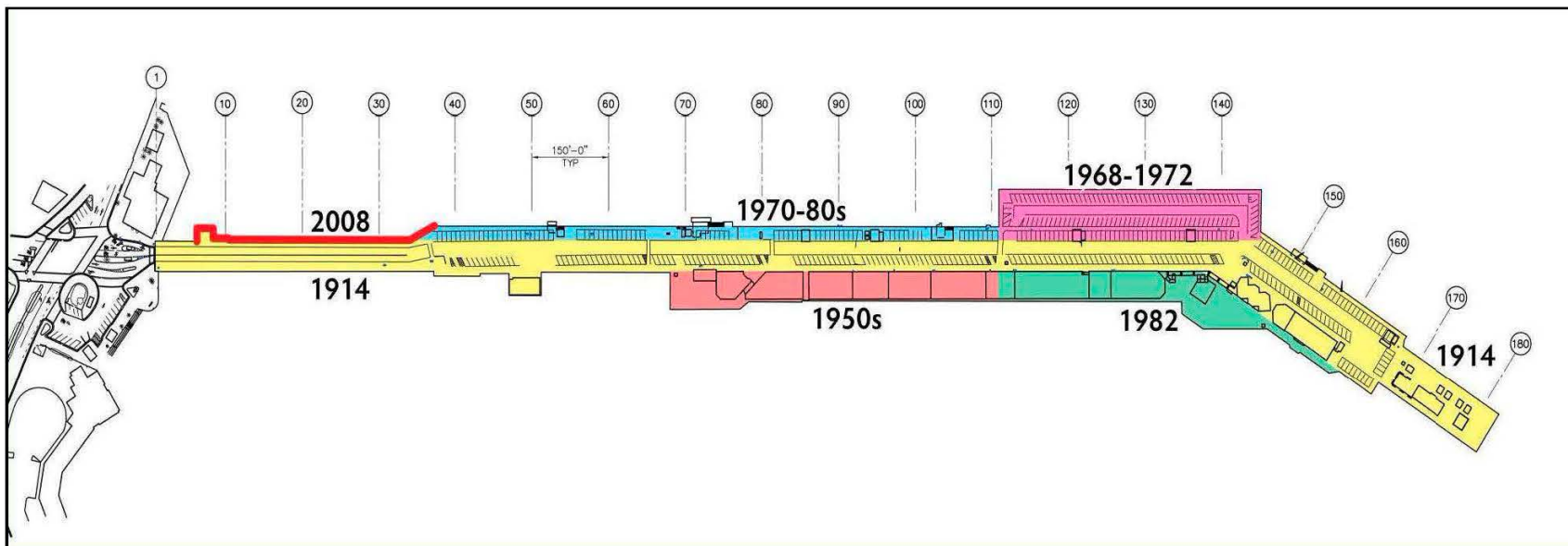
FIGURE 1-1

Project Location

Santa Cruz Wharf Maintenance Project

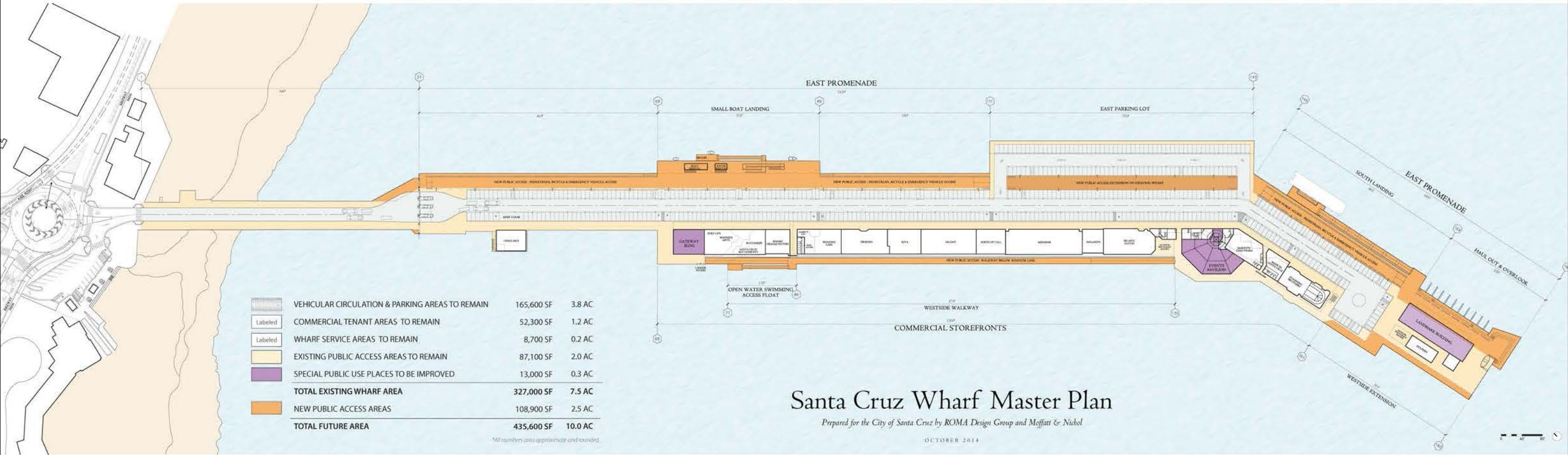


SOURCE: Santa Cruz Wharf Master Plan (2014)



SOURCE: Santa Cruz Wharf Master Plan (2014)

FIGURE 2
Wharf Expansion Over Time
Santa Cruz Wharf Master Plan EIR



SOURCE: ROMA Design Group; Moffatt & Nichol (2014)

FIGURE 3-1
Wharf Master Plan Concept
Santa Cruz Wharf Master Plan EIR



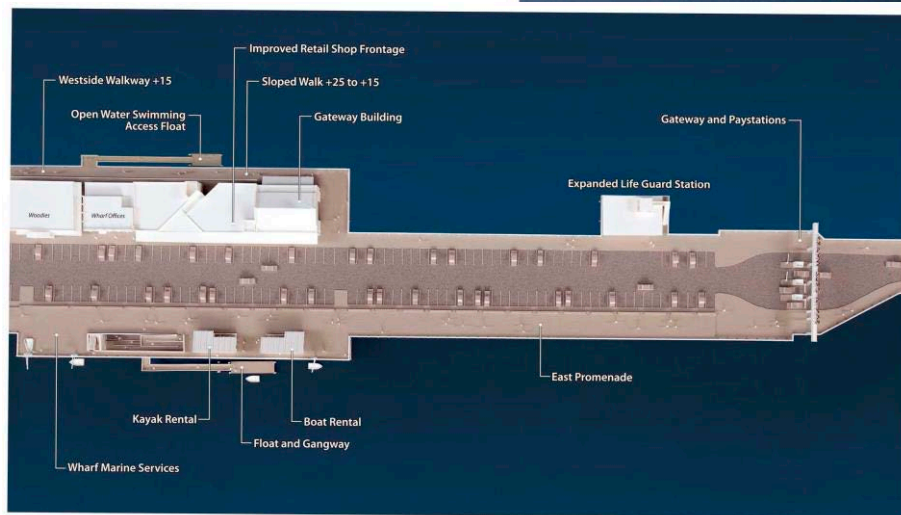
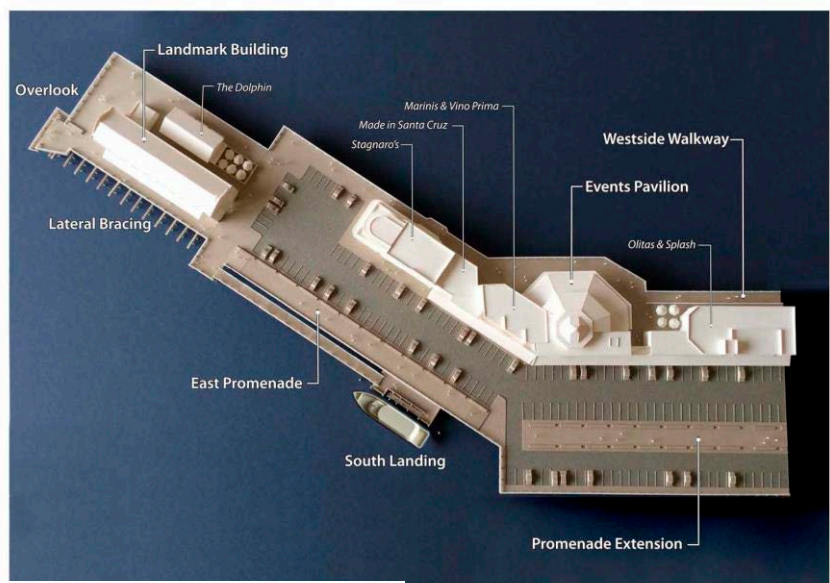
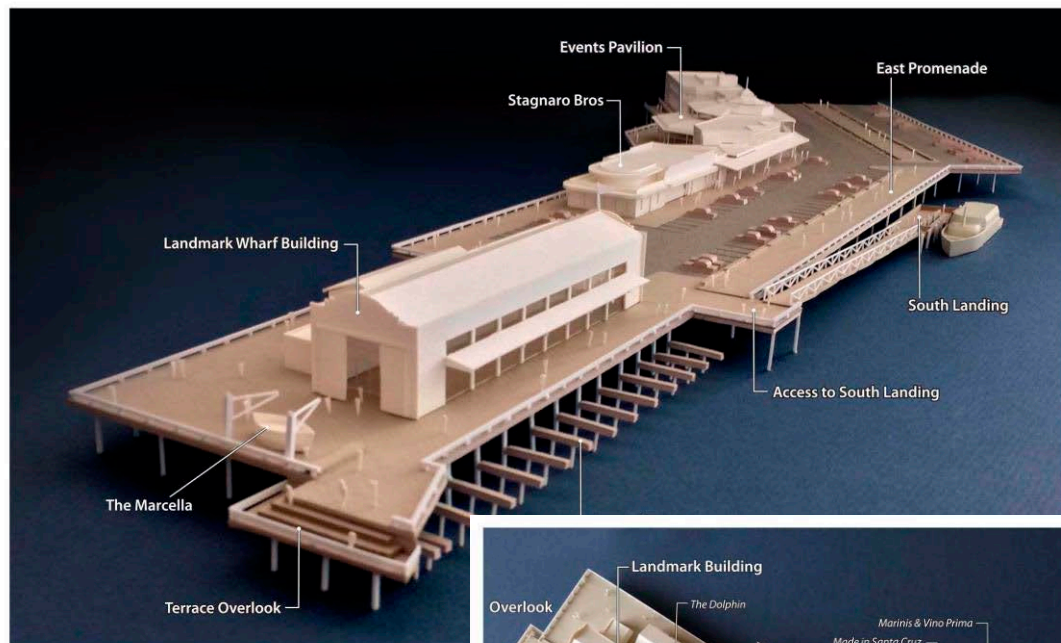
Prepared by City of Santa Cruz for General Visual Representation of Wharf Expansion

SOURCE: City of Santa Cruz

FIGURE 3-2

Proposed Public Access & Recreational Improvements

Santa Cruz Wharf Master Plan EIR

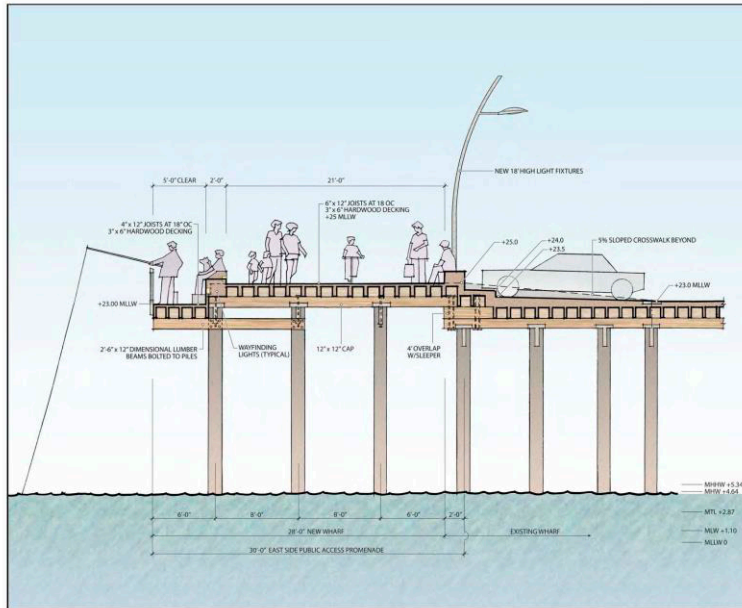


SOURCE: Santa Cruz Wharf Master Plan (2014)

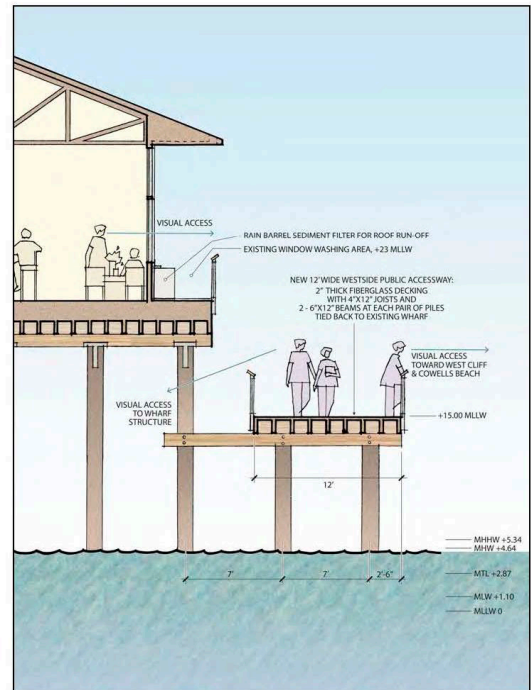
FIGURE 3-3

Model of Proposed Wharf Development

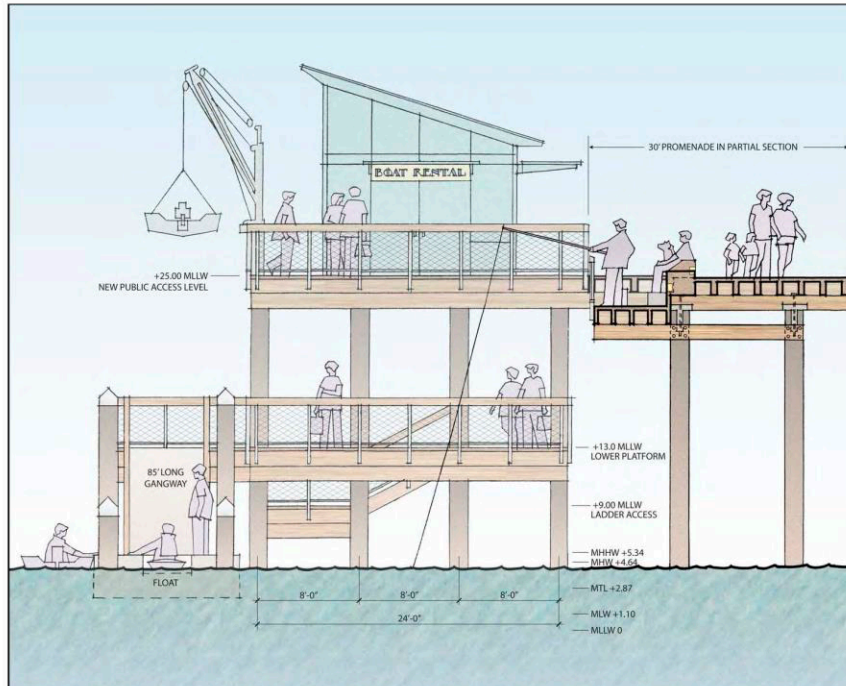
Santa Cruz Wharf Master Plan EIR



East Promenade



Westside Walkway



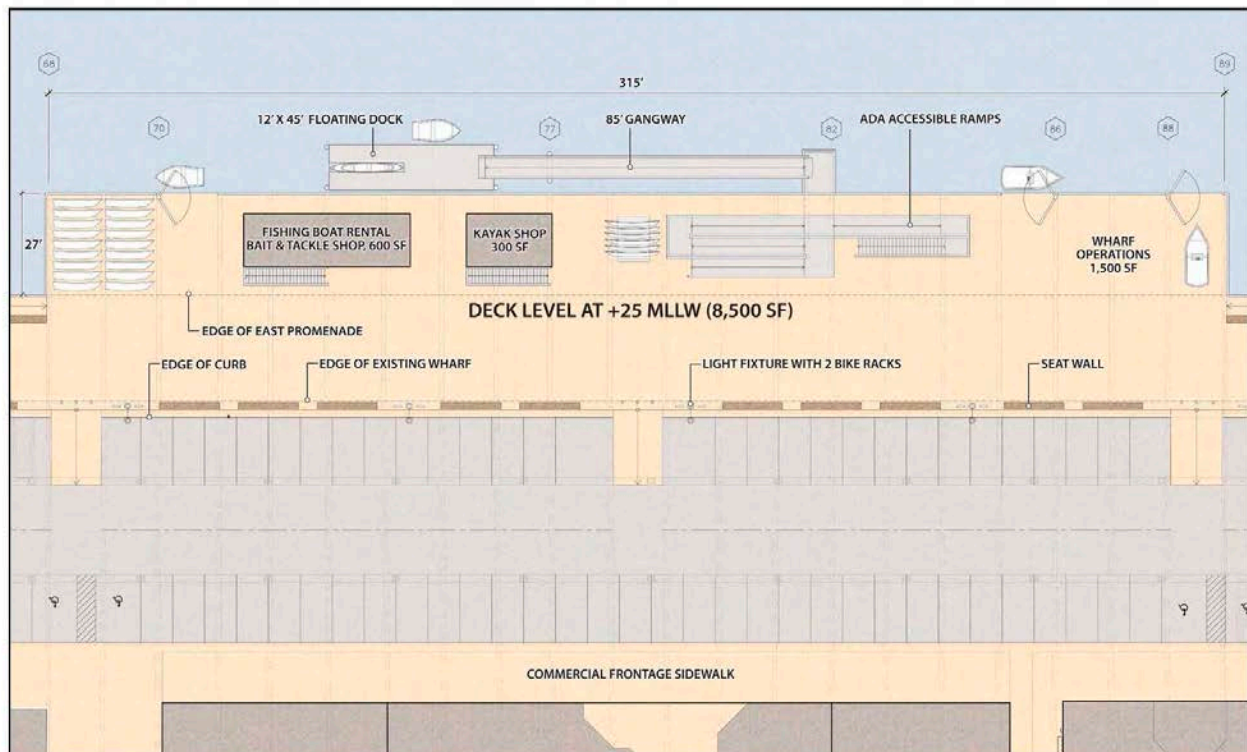
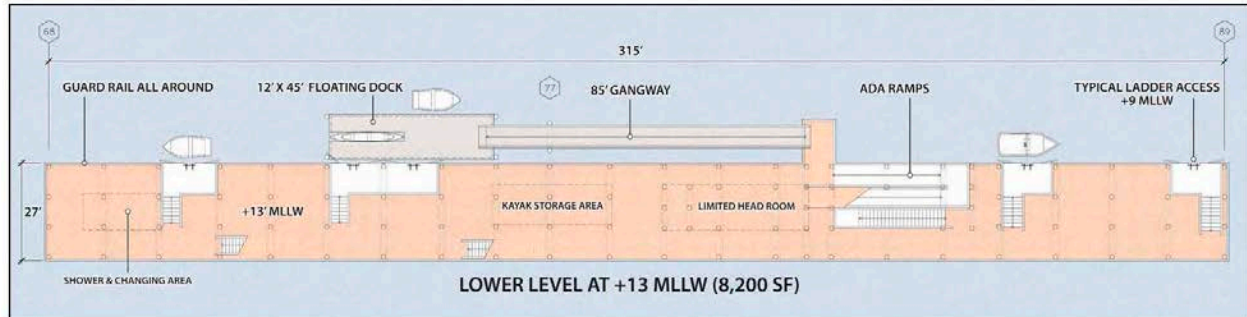
North Elevation of
Small Boat Landing
Adjacent to East Promenade

SOURCE: Santa Cruz Wharf Master Plan (2014)

FIGURE 3-4

Cross Sections

Santa Cruz Wharf Master Plan EIR

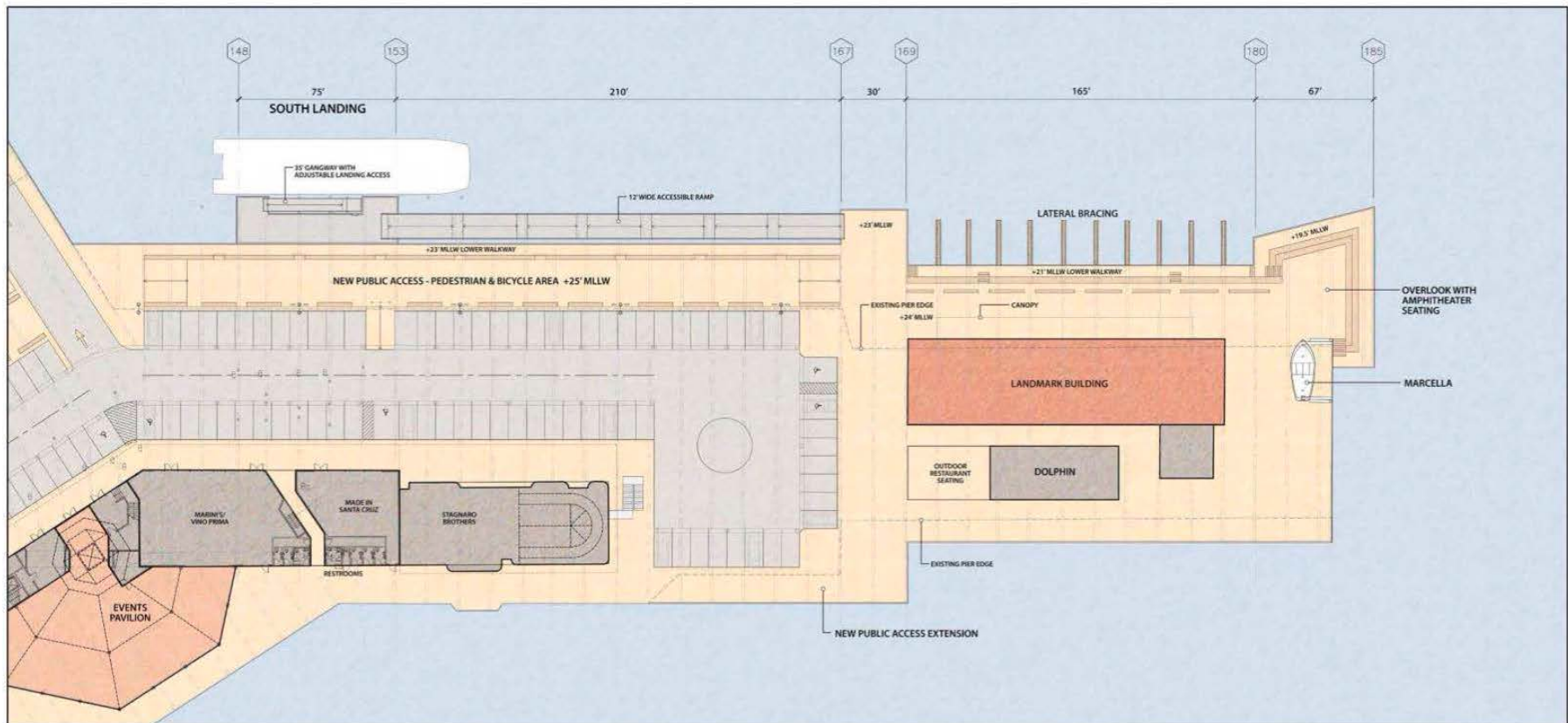


Plan of the deck and platform levels of the Small Boat Landing

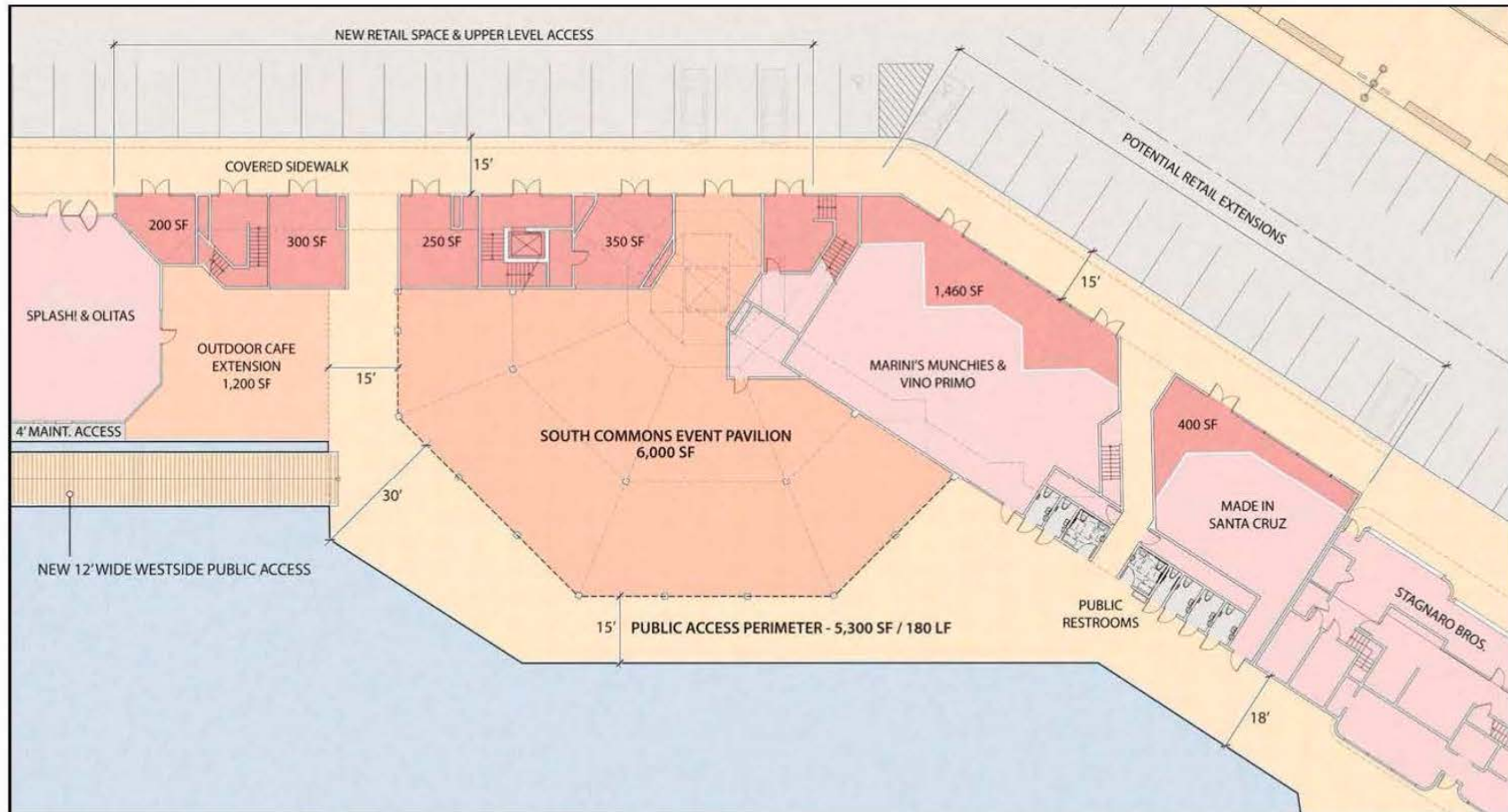
SOURCE: Santa Cruz Wharf Master Plan (2014)

FIGURE 3-5A

Concept Site Plan - Small Boat Landing
Santa Cruz Wharf Master Plan EIR

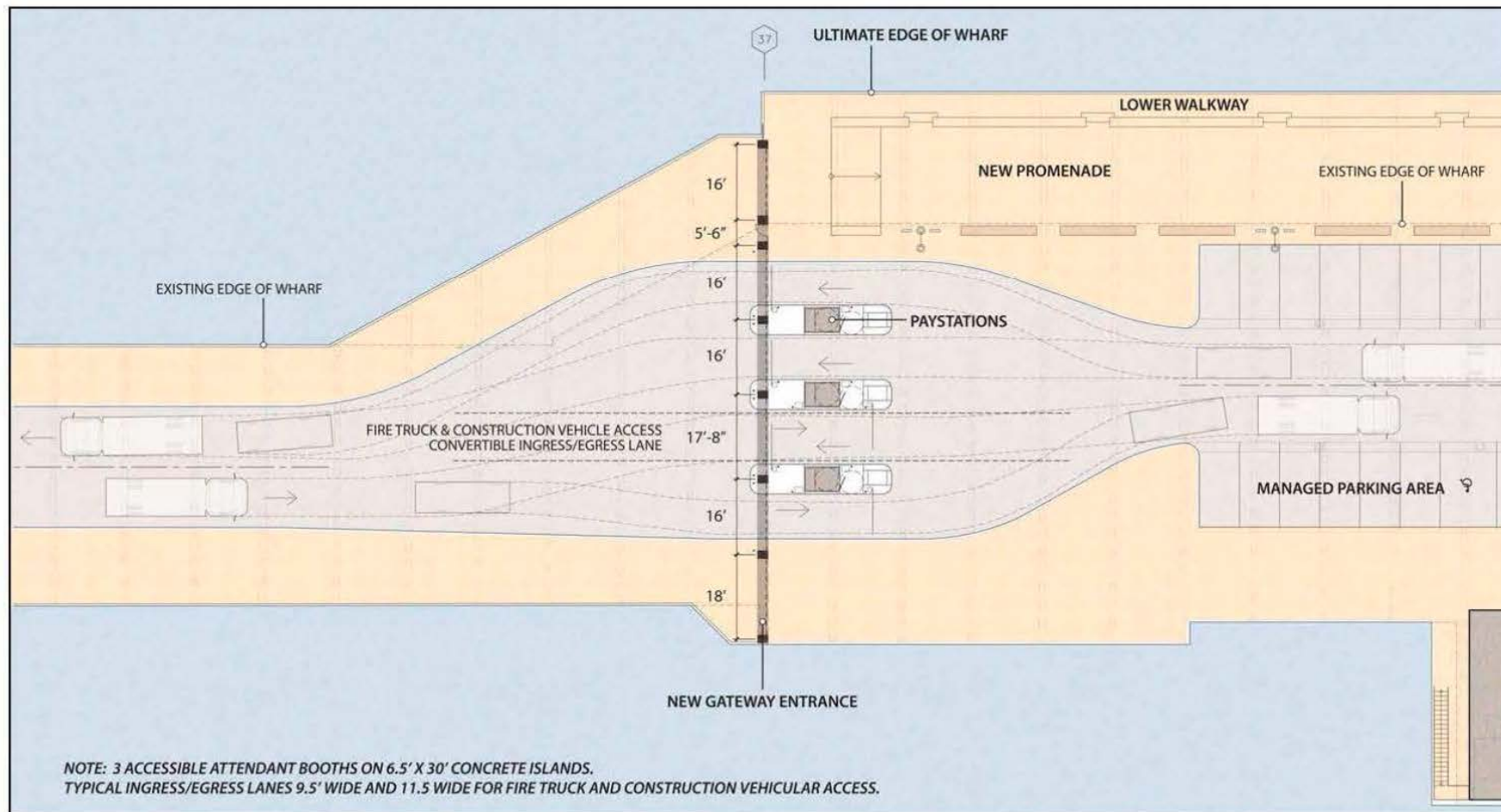


SOURCE: Santa Cruz Wharf Master Plan (2014)



The plan for the Events Pavilion includes the addition of small commercial tenant spaces and the extension of the existing commercial buildings.

SOURCE: Santa Cruz Wharf Master Plan (2014)

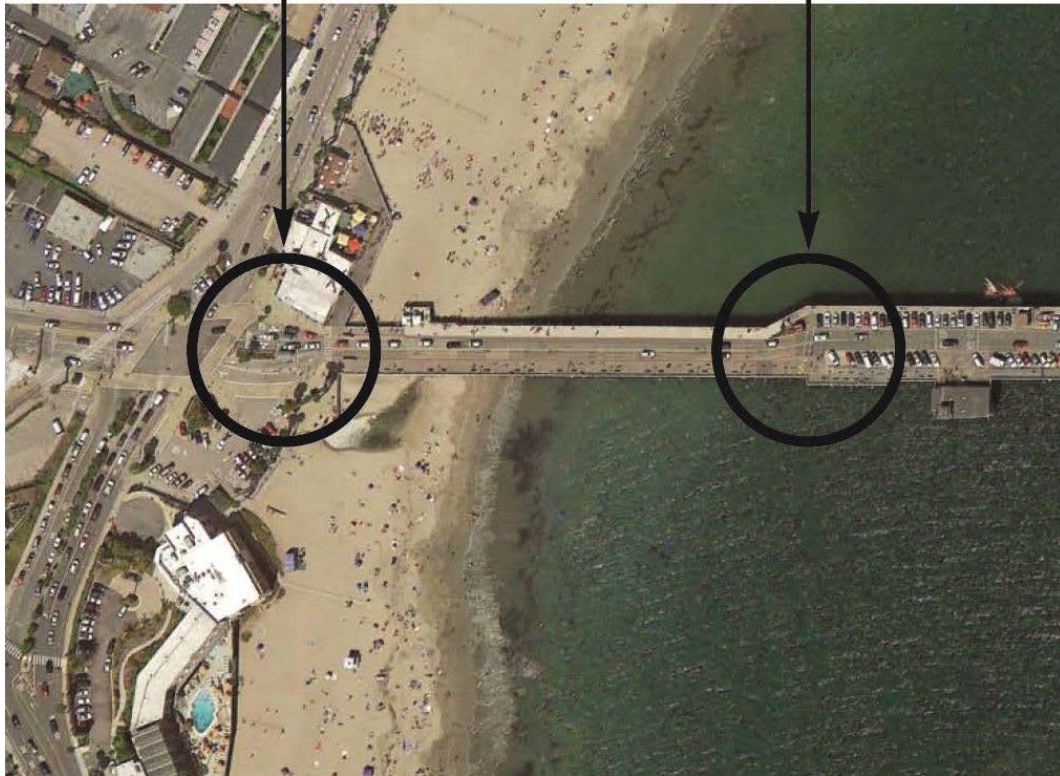


The pay stations provide four lanes in and out of the Wharf – two in/out on most days and one in and three out when needed.

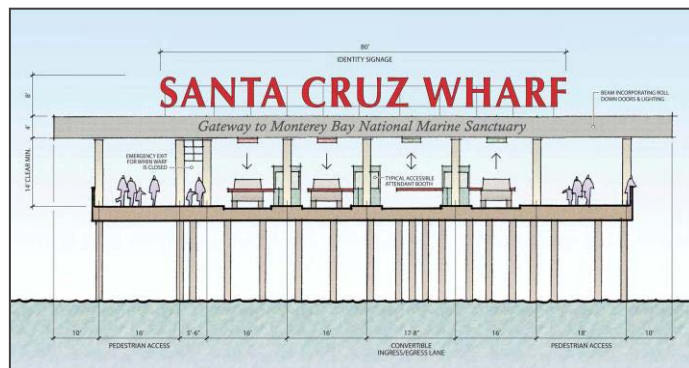
SOURCE: Santa Cruz Wharf Master Plan (2014)

Existing Wharf Entrance

Relocated Entrance



The Master Plan provides a general example of signage, but a specific design, size, shape, and color will be developed and provided for public review before a final design is selected



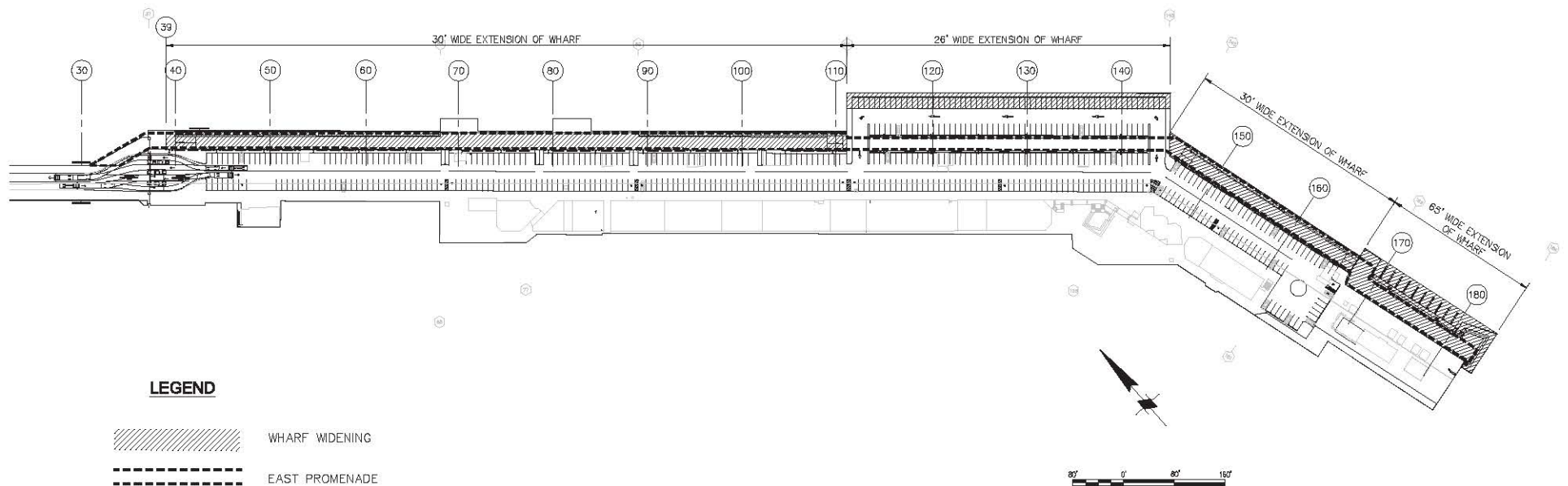
SOURCE: City of Santa Cruz (2017)

FIGURE 3-6

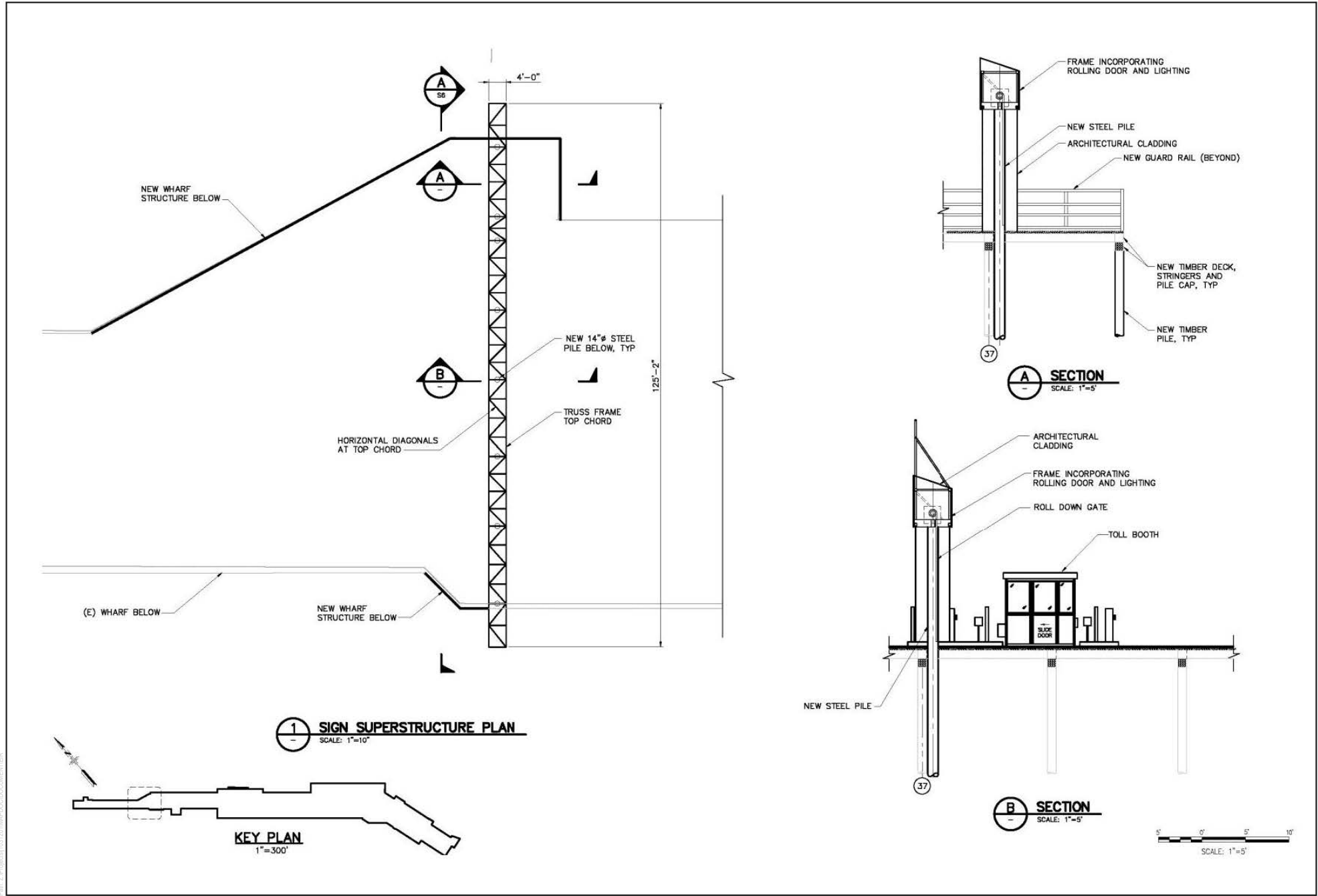
Proposed Wharf Entrance Relocation

Santa Cruz Wharf Master Plan EIR

EAST PROMENADE SANTA CRUZ WHARF



SOURCE: City of Santa Cruz Public Works Department

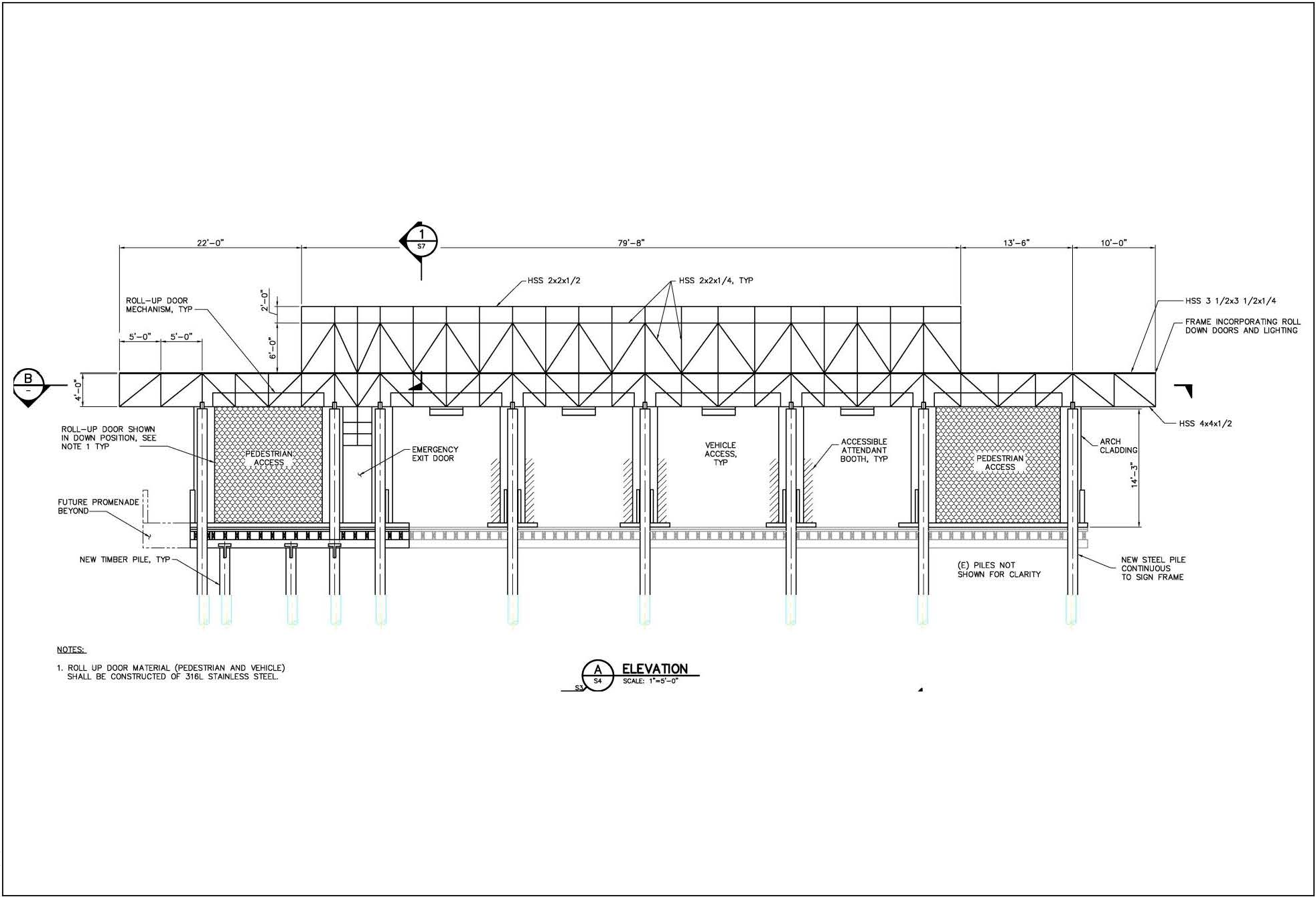


SOURCE: City of Santa Cruz Public Works Department

FIGURE 3-7B

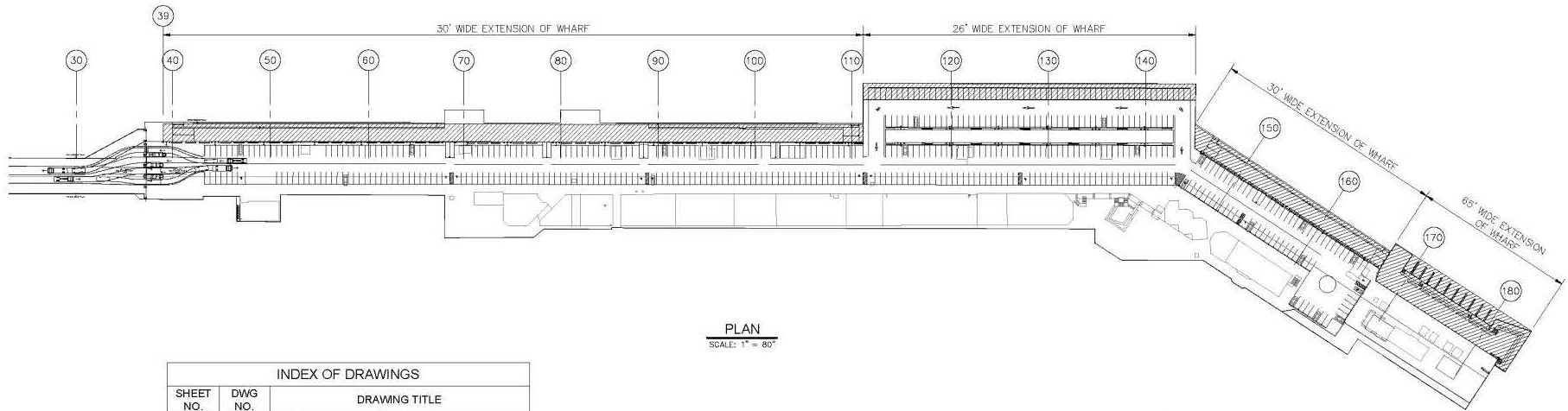
Entry Gate/Sign Structure Cross Section

Santa Cruz Wharf Master Plan EIR



SOURCE: City of Santa Cruz Public Works Department

EAST PROMENADE SANTA CRUZ WHARF

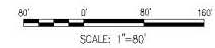


PLAN
SCALE: 1" = 80'

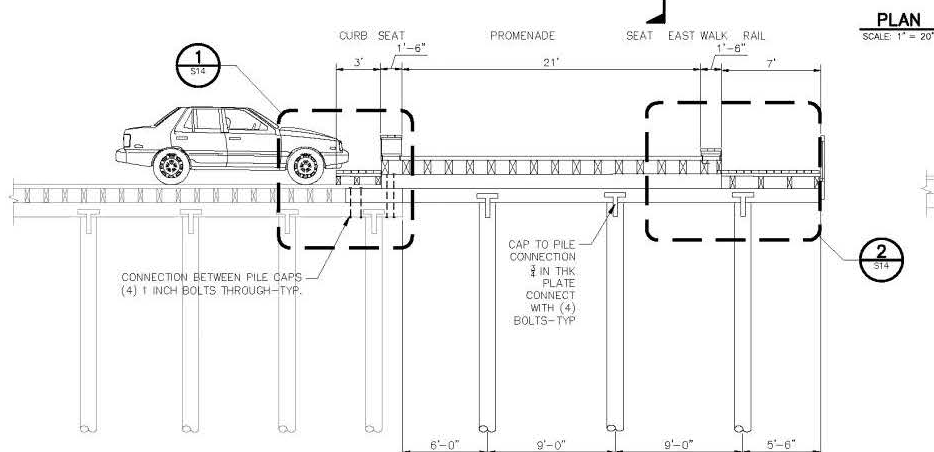
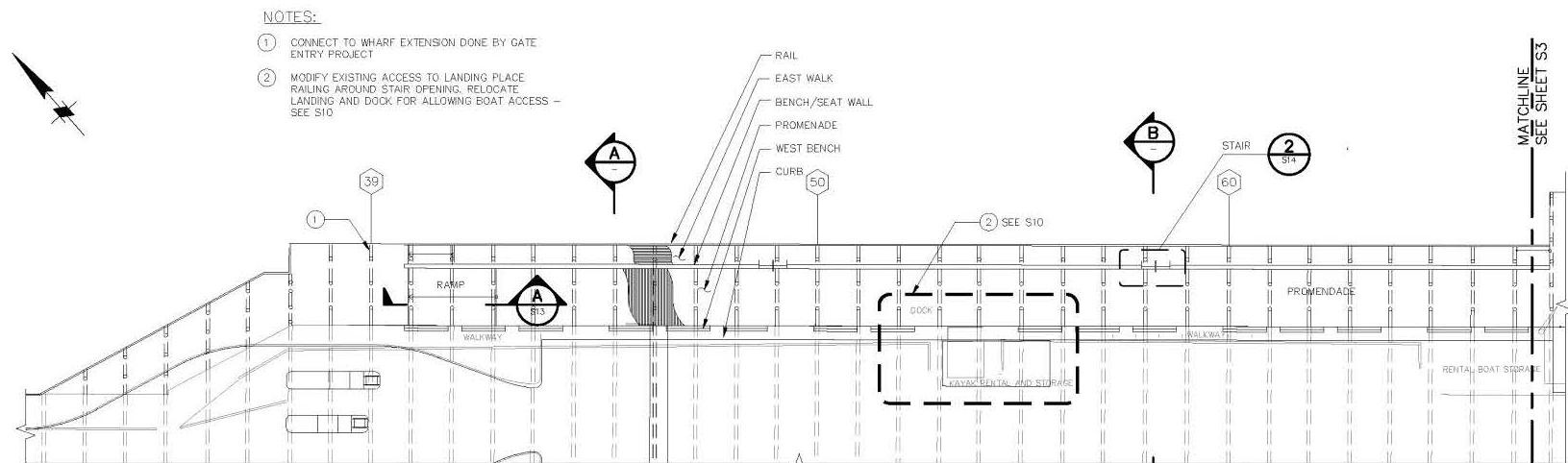
INDEX OF DRAWINGS		
SHEET NO.	DWG NO.	DRAWING TITLE
1	T1	TITLE SHEET
2	S1	GENERAL NOTES
3	S2	PLAN AND SECTIONS - 1
4	S3	PLAN AND SECTIONS - 2
5	S4	PLAN AND SECTIONS - 3
6	S5	PLAN AND SECTIONS - 4
7	S6	STRIPING PLAN - 1
8	S7	STRIPING PLAN - 2
9	S8	STRIPING PLAN - 3
10	S10	PLAN AND SECTIONS - KAYAK DOCK
11	S11	DETAIL - PLAN AND ELEVATION
12	S12	PLAN AND SECTIONS - RENTAL, PUBLIC, STAFF
13	S13	RAMP SECTIONS
14	S14	DETAILS

NOTES:

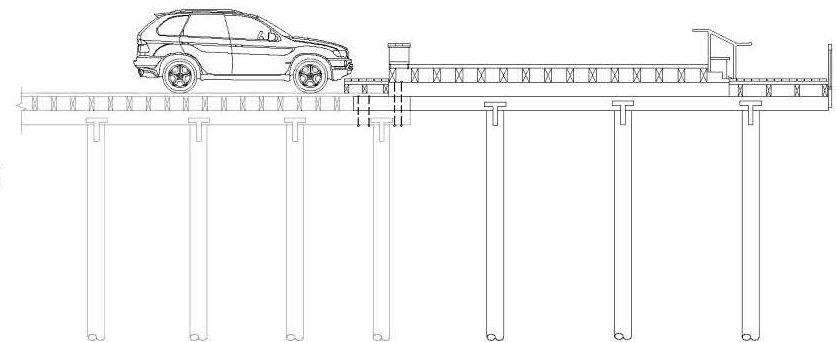
1. PARKING ARRANGEMENT SHOWN IS REVISED FROM EXISTING. SEE SHEETS S6, S7 AND S8.



SOURCE: City of Santa Cruz Public Works Department



A SECTION
SCALE: 1/4"=1'-0"



B SECTION
SCALE: 1/4"=1'-0"

SCALE: 1"=20'

SOURCE: City of Santa Cruz Public Works Department

DUDEK

FIGURE 3-8B
East Promenade Representative Site Plan & Cross Section

Santa Cruz Wharf Master Plan EIR