

K-5 Los Angeles Public Library Correspondence



September 16, 2015

Eloisa Sarao
LOS ANGELES PUBLIC LIBRARY
BUSINESS OFFICE
630 West 5th Street
Los Angeles, CA 90071

Re: Request for Information Regarding Library Services and Facilities for the 6220 West Yucca Street Mixed-Use Project in the City of Los Angeles

Dear Mrs. Sarao,

In coordination with the City of Los Angeles Department of City Planning, PCR Services Corporation is preparing an Environmental Impact Report (EIR) for the proposed 6220 West Yucca Street Mixed-Use project (project) in the Hollywood area pursuant to the California Environmental Quality Act (CEQA).

The EIR will include an assessment of the project's potential impacts on library services and facilities. Since the project is located within the jurisdiction of the Los Angeles Public Library (LAPL), we are requesting information with regard to library services and facilities. In order to maintain the schedule for the EIR, we respectfully request your input by **September 28, 2015**.

The following is a brief description of the project and a list of information requested to support the evaluation of library services and facilities in the EIR. The regional location map, aerial photograph with surrounding uses, and the project site plan are attached to this letter.

Project Description

Project Location and Surrounding Area. The project site is located on the south side of West Yucca Street between Argyle Avenue and North Vista Del Mar Avenue (addresses: 1756, 1760 North Argyle Avenue; 6210-6220 West Yucca Street; and 1765, 1771, 1771, and 1779 North Vista Del Mar Avenue) in the Hollywood community of the City of Los Angeles, approximately five miles northwest of Downtown Los Angeles as shown on **Figure A-1, Regional and Project Vicinity Locations**. The project site is bounded by Yucca Street, a vacant 5-story commercial building, and 3-story residential lofts to the north; North Vista Del Mar Avenue and 1- and 2-story single-family residences and duplexes to the east; vacant land (former Little Country Church of Hollywood) and 1- and 2-story single-family residences and duplexes followed by a 5-story mixed-use residential and commercial development to the south; and Argyle Avenue and commercial uses to the west. **Figure A-2, Aerial Photograph with Surrounding Land Uses**, illustrates the surrounding uses.



Proposed Project. The project would consist of two buildings, Buildings 1 and 2. Building 1 (up to 32-stories) would occupy the majority of the project site atop a six-level podium structure with one semi-subterranean level (P1 Level), and would include a mix of residential, hotel, and commercial/restaurant uses. Building 2 would be 6-stories with only residential uses. Overall, the project would include 191 multi-family residential units (including 39 affordable units), 260 hotel rooms, approximately 6,980 square feet of commercial/restaurant uses (P1 and Ground Levels), and a total of 372,450 square feet of floor area. Parking for all proposed uses would be provided within a six-level (one semi-subterranean level) parking structure housed within the podium structure of Building 1. The proposed development is summarized below in **Table A-1, *Proposed Project Summary***. The site plan is illustrated in **Figure A-3, *Site Plan***.



Table A-1

Proposed Project Summary

Residential Units (Buildings 1 and 2)

Market Rate	Affordable	Total
One Bedroom		
57	15	72
<u>Two Bedroom</u>		
83	24	107
<u>Suite</u>		
12	0	12
152	39	191 units
Residential Unit Floor Area (Building 1)		203,815 s.f.
Residential Unit Floor Area (Building 2)		14,385 s.f.
Residential Unit Floor Area		218,200 s.f.
<u>Hotel Units (Building 1)</u>		
<u>Rooms</u>		
<u>258</u>		390 s.f. each
<u>Suites</u>		
<u>2</u>		780 s.f. each
260		
Total Hotel Floor Area		147,270 s.f.
Commercial/Restaurant Uses (Building 1)		
Total Commercial/Restaurant Floor Area		6,980 s.f.
Project Floor Area		
Building 1 Floor Area		358,065 s.f.
Building 2 Floor Area		14,385 s.f.
Total Project Floor Area		372,450 s.f.
Total Buildable Area		45,982 s.f.
FAR		8.1:1

s.f. = square feet avg. = average FAR = floor-area ratio

Source: 6220 West Yucca Design Plans, prepared by Togawa Smith Martin, dated July 7, 2015.



Requested Information

For the analysis, please provide the following information regarding the LAPL and issues relating to the provision of library services and facilities for the project area, as appropriate.

- Based on information available on the LAPL website, four libraries located in the vicinity of the project site that would provide library services to the project site include the Frances Howard Goldwyn-Hollywood Regional Branch Library located at 1623 North Ivar Avenue (approximately 0.25 miles southwest from the project site); the Will and Ariel Durant Branch Library located at 7140 West Sunset Boulevard (approximately 1.25 miles southwest from the project site); the John C. Fremont Branch Library located at 6121 Melrose Avenue (approximately 1.5 miles south from the project site); and the Fairfax Branch located at 161 S. Gardner Street (approximately 2.7 miles southwest from the project site). Please confirm.
- Please provide facility information for each LAPL library serving the project site, including:
 - a. size of library buildings (square footage)
 - b. personnel (paid employees and volunteers)
 - c. collection size and amenities
 - d. programmed or target service population (please indicate the basis for the population)
 - e. actual population served
 - f. census tracts that comprise each of the library's service area (if known) and;
- Planned, funded, and/or scheduled service improvements or expansions to City library facilities that would serve the project.
- Please confirm LAPL's standards and goals used to assess the adequacy of library facilities and potential impact from Project development.

Please feel free to contact me at (949) 753-7001 to discuss our information needs and/or any questions regarding the project. If you would prefer to e-mail your response to this information request, please send to me at b.allee@pcrnet.com. I really appreciate your time and assistance with this effort.

Eloise Sarao
CITY OF LOS ANGELES PUBLIC LIBRARY
September 16, 2015 - Page 5

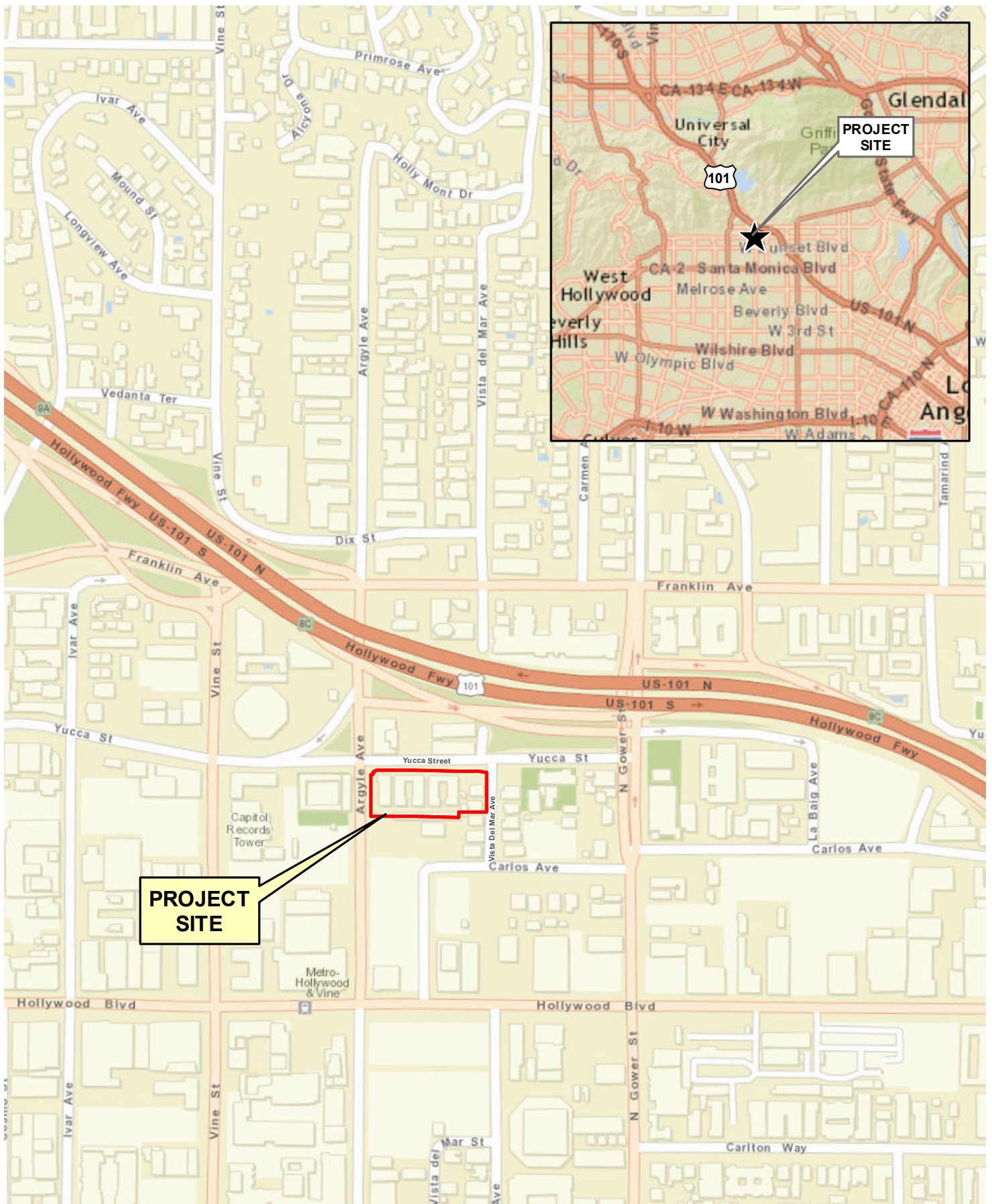


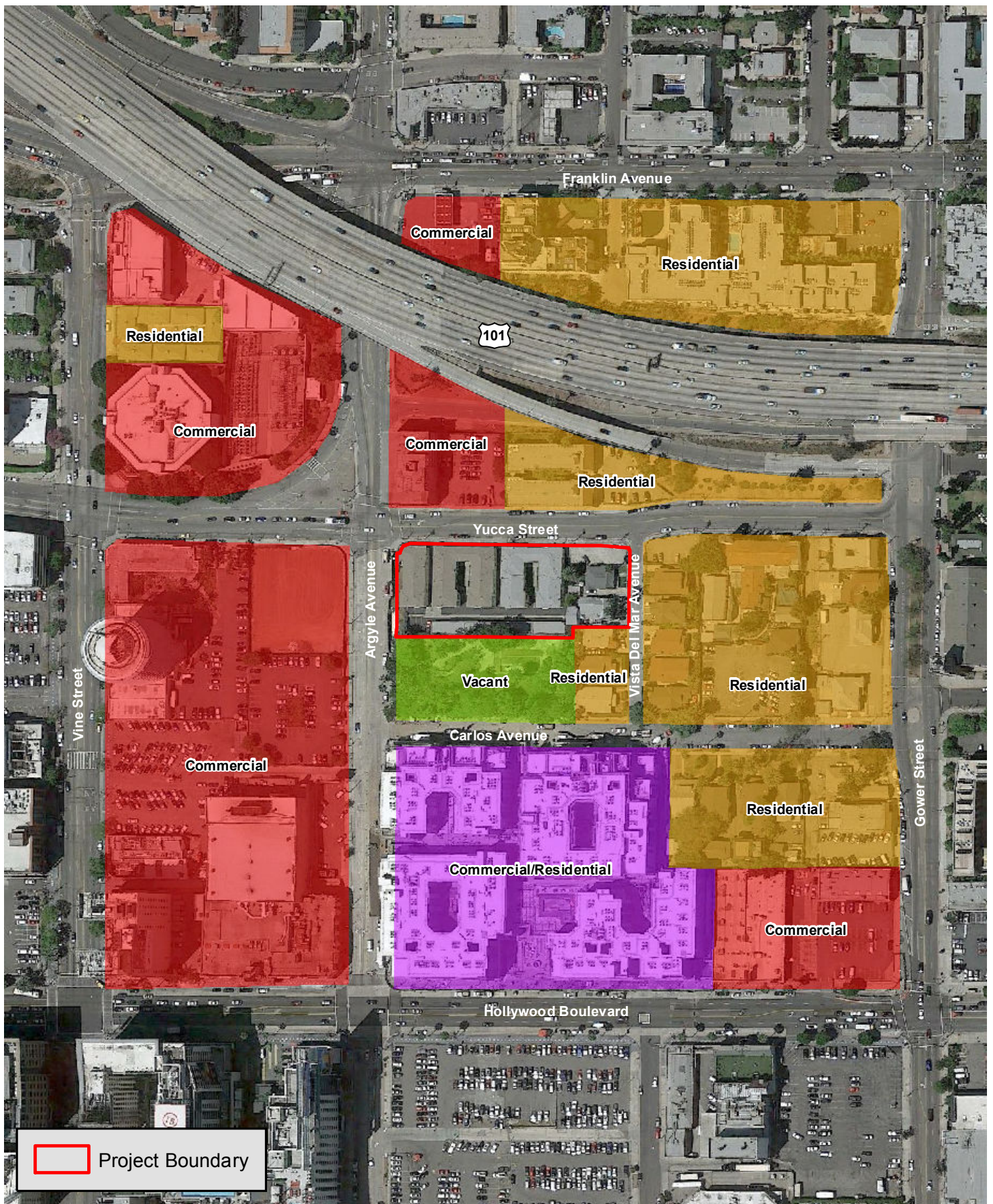
Sincerely,
PCR SERVICES CORPORATION

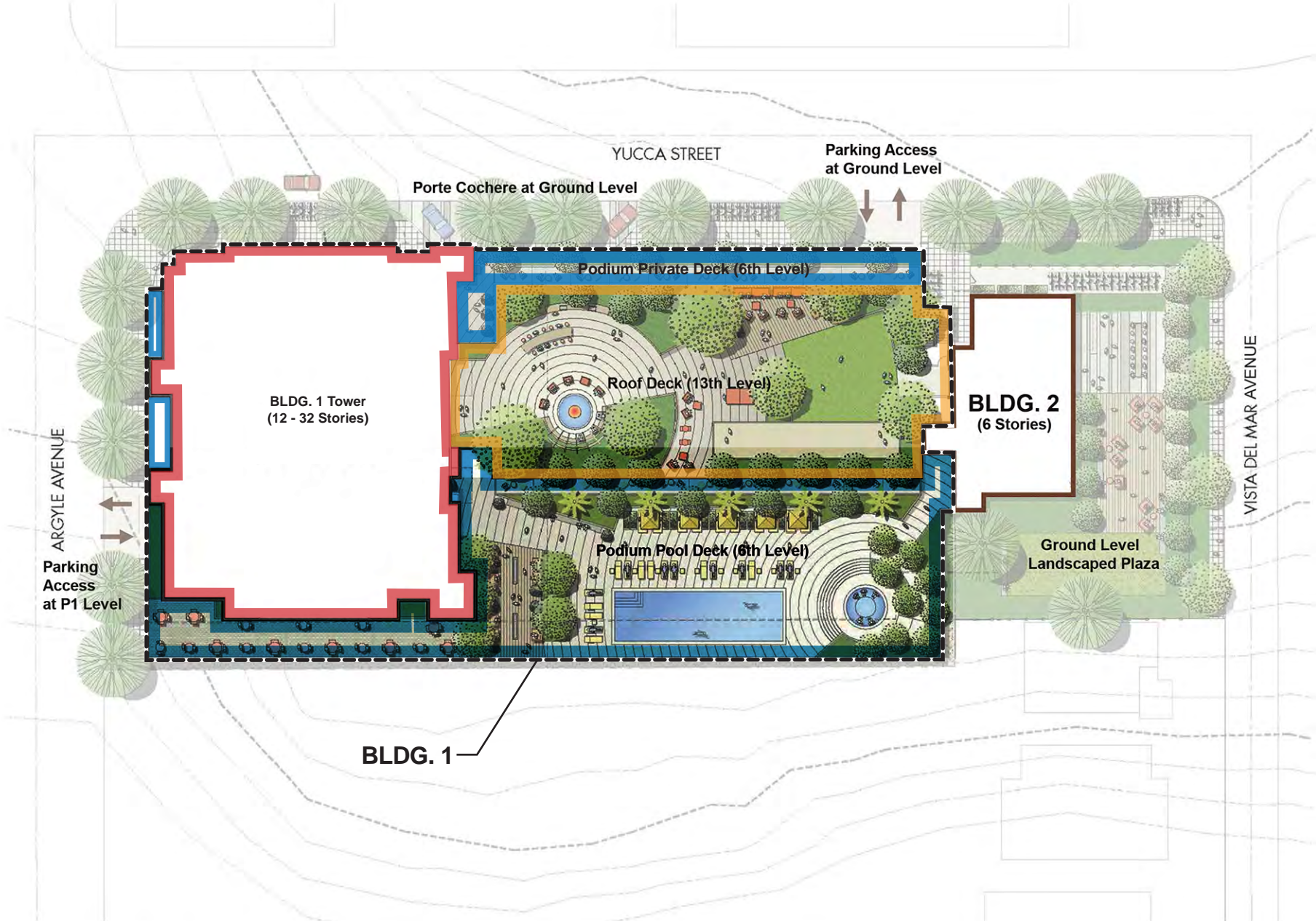
A handwritten signature in black ink, appearing to read "Brian Allee".

Brian Allee
Senior Planner

Attachments:
Figure A-1, Regional Location Map
Figure A-2, Aerial Photograph with Surrounding Land Uses
Figure A-3, Site Plan







Re: 6220 West Yucca Street Project

The following is our response to your questions:

Frances Howard Goldwyn-Hollywood Regional Branch Library

Libraries that would serve the proposed project:

Goldwyn Hollywood Regional Branch Library
1623 N. Ivar Ave.
Hollywood, CA 90028

Hours of Operation:

Monday-Thursday	10 am – 8 pm
Friday, Saturday	9:30 am – 5:30 pm
Sunday	1 pm – 5 pm

A. Size (Square Feet):
19,000 sq. ft. facility.

B. Staffing Levels:
10 Full-time Employees + 6 Volunteers

C. Collection size/Circulation and Amenities:
87,182 Volumes/Circulation – 123,539

Amenities: See “Special facilities available for public use” below

D. Programmed or Target Service Population:

Hollywood Area.

The Los Angeles Public Library (LAPL) does not make targeted projections but rather uses the most recent Census figures to determine if a branch should be constructed in a given area.

On February 8, 2007, The Board of Library Commissioners approved a new Branch Facilities Plan. This Plan includes Criteria for new Libraries, which recommends new size standards for the provision of LAPL facilities – 12,500 s.f. for community with less than 45,000 population and 14,500 s.f. for community with more than 45,000 population and up to 20,000 s.f. for a Regional branch. It also recommends that when a community reaches a population of 90,000, an additional branch library should be considered for the area.

E. Current Service Population:
78,944 per Census 2010 est.

F. Census Tracts:

1893.00	1903.01	1911.10
1894.00	1905.10	1911.20
1895.00	1905.20	1917.10
1896.00	1907.00	1917.20
1897.01	1908.01	
1897.02	1908.02	
1901.00	1909.01	
1902.01	1909.02	
1902.02	1910.00	

- There are no planned improvements to add capacity through expansion. There are no plans for the development of any other new libraries to serve this community.
- LAPL's standards and goals used to assess the adequacy of library facilities and potential impact from Project development.

On February 8, 2007, The Board of Library Commissioners approved a new Branch Facilities Plan. This Plan includes Criteria for new Libraries, which recommends new size standards for the provision of LAPL facilities – 12,500 s.f. for community with less than 45,000 population and 14,500 s.f. for community with more than 45,000 population and up to 20,000 s.f. for a Regional branch. It also recommends that when a community reaches a population of 90,000, an additional branch library should be considered for the area.

- Special facilities available for public use:
 - Free Public Wi-Fi
 - Wireless Printing
 - Reserve a Computer
 - Meeting Room Rental
 - Zoom Text Computer for the Visually Impaired

Special Features:

As a result of the fire and the Goldwyn Foundation support, the Special Collections Room was established in 1985 to protect, preserve, and make available for research, scarce, rare, and unique materials reflecting the community's interest in the performing arts and the history of the Hollywood Area.

The Los Angeles Public Library recommends a mitigation fee of \$200 per capita based upon the projected population of the development. The funds will be used for staff, books, computers and other library materials. It is recommended that mitigation fees be paid by the developer.

Any increase in the residential population that is in close proximity to this branch has a direct impact on library services with increased demands for library materials, computers and information services.

Will and Ariel Durant Branch Library

Libraries that would serve the proposed project:

Will and Ariel Branch Library
7140 W. Sunset Boulevard
Los Angeles, CA 90046

Hours of Operation:

Monday, Wednesday	10 am – 8 pm
Tuesday, Thursday	12:00 pm – 8 pm
Friday, Saturday	9:30 am – 5:30 pm
Sunday	CLOSED

- A. **Size (Square Feet):**
12,500 sq. ft. facility.
- B. **Staffing Levels:**
8 Full-time Employees + 31 Volunteers
- C. **Collection size/Circulation and Amenities:**
47,727 Volumes/Circulation – 138,968

Amenities: See “Special facilities available for public use” below

- D. **Programmed or Target Service Population:**

Hollywood Area.

The Los Angeles Public Library (LAPL) does not make targeted projections but rather uses the most recent Census figures to determine if a branch should be constructed in a given area.

On February 8, 2007, The Board of Library Commissioners approved a new Branch Facilities Plan. This Plan includes Criteria for new Libraries, which recommends new size standards for the provision of LAPL facilities – 12,500 s.f. for community with less than 45,000 population and 14,500 s.f. for community with more than 45,000 population and up to 20,000 s.f. for a Regional branch. It also recommends that when a community reaches a population of 90,000, an additional branch library should be considered for the area.

- E. **Current Service Population:**
25,657 per Census 2010 est.

F. Census Tracts:

1898.00
1899.02
1941.01
1941.02
1942.00
1943.00
2611.01

- There are no planned improvements to add capacity through expansion. There are no plans for the development of any other new libraries to serve this community.
- LAPL's standards and goals used to assess the adequacy of library facilities and potential impact from Project development.

On February 8, 2007, The Board of Library Commissioners approved a new Branch Facilities Plan. This Plan includes Criteria for new Libraries, which recommends new size standards for the provision of LAPL facilities – 12,500 s.f. for community with less than 45,000 population and 14,500 s.f. for community with more than 45,000 population and up to 20,000 s.f. for a Regional branch. It also recommends that when a community reaches a population of 90,000, an additional branch library should be considered for the area.

- Special facilities available for public use:
 - Free Public Wi-Fi
 - Wireless Printing
 - Reserve a Computer
 - Meeting Room Rental

The Los Angeles Public Library recommends a mitigation fee of \$200 per capita based upon the projected population of the development. The funds will be used for staff, books, computers and other library materials. It is recommended that mitigation fees be paid by the developer.

Any increase in the residential population that is in close proximity to this branch has a direct impact on library services with increased demands for library materials, computers and information services.

John C. Fremont Branch Library

Libraries that would serve the proposed project:

John C. Fremont Branch Library
6121 Melrose Ave.
Los Angeles, CA 90038

Hours of Operation:

Monday, Wednesday	10 am – 8 pm
Tuesday, Thursday	12:00 pm – 8 pm
Friday, Saturday	9:30 am – 5:30 pm
Sunday	CLOSED

- A. **Size (Square Feet):**
7,361 sq. ft. facility.
- B. **Staffing Levels:**
6.5 Full-time Employees + 15 Volunteers
- C. **Collection size/Circulation and Amenities:**
40,452 Volumes/Circulation – 99,181

Amenities: See “Special facilities available for public use” below.

- D. **Programmed or Target Service Population:**

Hollywood Area.

The Los Angeles Public Library (LAPL) does not make targeted projections but rather uses the most recent Census figures to determine if a branch should be constructed in a given area.

On February 8, 2007, The Board of Library Commissioners approved a new Branch Facilities Plan. This Plan includes Criteria for new Libraries, which recommends new size standards for the provision of LAPL facilities – 12,500 s.f. for community with less than 45,000 population and 14,500 s.f. for community with more than 45,000 population and up to 20,000 s.f. for a Regional branch. It also recommends that when a community reaches a population of 90,000, an additional branch library should be considered for the area.

- F. **Current Service Population:**
30,896 per Census 2010 est.

G. Census Tracts

1918.10
1918.20
1919.00
1919.01
1919.02
1923.00
2110.00
2141.00

- There are no planned improvements to add capacity through expansion. There are no plans for the development of any other new libraries to serve this community.
- LAPL's standards and goals used to assess the adequacy of library facilities and potential impact from Project development.

On February 8, 2007, The Board of Library Commissioners approved a new Branch Facilities Plan. This Plan includes Criteria for new Libraries, which recommends new size standards for the provision of LAPL facilities – 12,500 s.f. for community with less than 45,000 population and 14,500 s.f. for community with more than 45,000 population and up to 20,000 s.f. for a Regional branch. It also recommends that when a community reaches a population of 90,000, an additional branch library should be considered for the area.

- Special facilities available for public use:
 - Free Public Wi-Fi
 - Wireless Printing
 - Reserve a Computer
 - Meeting Room Rental

The Los Angeles Public Library recommends a mitigation fee of \$200 per capita based upon the projected population of the development. The funds will be used for staff, books, computers and other library materials. It is recommended that mitigation fees be paid by the developer.

Any increase in the residential population that is in close proximity to this branch has a direct impact on library services with increased demands for library materials, computers and information services.

Fairfax Branch Library

Libraries that would serve the proposed project:

Fairfax Branch Library
161 South Gardner Street
Los Angeles, CA 90036

Hours of Operation:

Monday, Wednesday	10 am – 8 pm
Tuesday, Thursday	12:00 pm – 8 pm
Friday, Saturday	9:30 am – 5:30 pm
Sunday	CLOSED

- A. **Size (Square Feet):**
12,500 sq. ft. facility.
- B. **Staffing Levels:**
8 Full-time Employees + 57 Volunteers
- C. **Collection size/Circulation and Amenities:**
50,218 Volumes/Circulation – 209,707

Amenities: See “Special facilities available for public use” below

D. Programmed or Target Service Population:

Hollywood Area.

The Los Angeles Public Library (LAPL) does not make targeted projections but rather uses the most recent Census figures to determine if a branch should be constructed in a given area.

On February 8, 2007, The Board of Library Commissioners approved a new Branch Facilities Plan. This Plan includes Criteria for new Libraries, which recommends new size standards for the provision of LAPL facilities – 12,500 s.f. for community with less than 45,000 population and 14,500 s.f. for community with more than 45,000 population and up to 20,000 s.f. for a Regional branch. It also recommends that when a community reaches a population of 90,000, an additional branch library should be considered for the area.

- E. **Current Service Population:**
75,152 per Census 2010 est.

F. Census Tracts:

1920.01	2145.03	2169.00
1920.02	2146.00	2171.00
1944.01	2147.00	2183.00
1944.02	2148.00	2703.00
1945.00	2149.01	
2140.00	2149.02	
2144.00	2151.01	
2145.01	2151.02	
2145.02	2163.00	

- There are no planned improvements to add capacity through expansion. There are no plans for the development of any other new libraries to serve this community.
- LAPL's standards and goals used to assess the adequacy of library facilities and potential impact from Project development.

On February 8, 2007, The Board of Library Commissioners approved a new Branch Facilities Plan. This Plan includes Criteria for new Libraries, which recommends new size standards for the provision of LAPL facilities – 12,500 s.f. for community with less than 45,000 population and 14,500 s.f. for community with more than 45,000 population and up to 20,000 s.f. for a Regional branch. It also recommends that when a community reaches a population of 90,000, an additional branch library should be considered for the area.

- Special facilities available for public use:
 - Free Public Wi-Fi
 - Wireless Printing
 - Reserve a Computer
 - Meeting Room Rental
 - Zoom Text Computer for the Visually Impaired

The Los Angeles Public Library recommends a mitigation fee of \$200 per capita based upon the projected population of the development. The funds will be used for staff, books, computers and other library materials. It is recommended that mitigation fees be paid by the developer.

Any increase in the residential population that is in close proximity to this branch has a direct impact on library services with increased demands for library materials, computers and information services.

Appendix I

LAPL Response Letter

Re: Modera Argyle Project

The following is our response to your questions:

- I. Which libraries would serve the proposed project?
 - Frances Howard Goldwyn - Hollywood Regional Library
 - John C. Fremont Branch Library
 - Will and Ariel Durant Branch Library
 - Wilshire Branch Library

Frances Howard Goldwyn - Hollywood Regional Library

- Location and hours of operation:
1623 N. Ivar Avenue
Los Angeles, CA 90028

Mon: 10-8, Tue: 10-8, Wed: 10-8, Thu: 10-8, Fri: 9:30-5:30, Sat: 9:30-5:30,
Sun: 1-5
- **Size (Square Feet):**
19,000 square feet
- **Staffing Levels:**
14.5 Full Time employees
- **Number of Volumes and Circulation:**
86,920 volumes /annual circulation - 119,553
- **Programmed or Target Service Population:**
The Los Angeles Public Library (LAPL) does not make targeted projections.
- **Actual population served including the assigned census tracts upon which service population is determined:**
100,006 estimated from LA Times Mapping L.A. database and branch library community boundaries.

The LAPL no longer uses census tracts.
- **Planned, funded, and/or scheduled improvements or expansions to the City library facilities that would serve this Project.**

There are no planned improvements to add capacity through expansion. There are no plans for the development of any other new libraries to serve this community.
- **Special facilities available for the public (i.e., children's reading assistance, homework centers, space for community meetings and programs).**

Modera Argyle Project

Free Public Wi-Fi
Wireless Printing
Reserve a Computer
Meeting Room Rental
Zoom Text Computer for the Visually Impaired

The branch is a Virtual Library with multiple computer workstations providing public access to LAPL's on-line library catalog, extensive information databases, and the Internet. This branch also provides WIFI connectivity for mobile electronic devices.

STAR – Story Telling and Reading. Star volunteers read aloud with kids of all ages at the library. Reading aloud is fun – and can improve reading skills and encourage a life-long love of books.

- **City library service standards and/or goals that would assist in analyzing the Project's potential impacts from development on local library services.**

On February 8, 2007, The Board of Library Commissioners approved a new Branch Facilities Plan. This Plan includes Criteria for new Libraries, which recommends new size standards for the provision of LAPL facilities – 12,500 s.f. for community with less than 45,000 population and 14,500 s.f. for community with more than 45,000 population and up to 20,000 s.f. for a Regional branch. It also recommends that when a community reaches a population of 90,000, an additional branch library should be considered for the area.

- **Would the Project, either individually or combined with other past, present or anticipated future projects, result in the need for new or altered library facilities? If so, please describe the nature, approximate location and approximate size of the new or altered facility.**

As it currently stands, the Frances Howard Goldwyn - Hollywood Regional Library does not meet the standard of the need for an additional branch when the service population reaches 90,000. Any increase in the residential/project population that is in close proximity to this branch has a direct impact on library services with increased demands for library staffing, materials, computers and information services. Therefore, mitigation measures may be necessary in order to lessen the impact to these services to a level that is appropriate for a given service population in accordance to the February 8, 2007 Board of Library Commissioners approved Branch Facilities Plan.

The Los Angeles Public Library recommends a mitigation fee of \$200 per capita based upon the projected population of the development. The funds will be used for staff, books, computers and other library materials. It is recommended that mitigation fees be paid for by the developer.

John C. Fremont Branch Library

- Location and hours of operation:

6121 Melrose Avenue
Los Angeles, CA 90038

Mon: 10-8, Tue: 12-8, Wed: 10-8, Thu: 12-8, Fri: 9:30-5:30,
Sat: 9:30-5:30, Sun: Closed

- **Size (Square Feet):**

7,361 square feet

- **Staffing Levels:**

8.5 Full Time employees

- **Number of Volumes and Circulation:**

40,452 volumes /annual circulation – 97,354

- **Programmed or Target Service Population:**

The Los Angeles Public Library (LAPL) does not make targeted projections.

- **Actual population served including the assigned census tracts upon which service population is determined:**

18,418 estimated from LA Times Mapping L.A. database and branch library community boundaries.

The LAPL no longer uses census tracts.

- **Planned, funded, and/or scheduled improvements or expansions to the City library facilities that would serve this Project.**

There are no planned improvements to add capacity through expansion. There are no plans for the development of any other new libraries to serve this community.

- **Special facilities available for the public (i.e., children's reading assistance, homework centers, space for community meetings and programs).**

Free Public Wi-Fi
Wireless Printing
Reserve a Computer
Meeting Room Rental
Zoom Text Computer for the Visually Impaired

The branch is a Virtual Library with multiple computer workstations providing public access to LAPL's on-line library catalog, extensive information databases,

and the Internet. This branch also provides WIFI connectivity for mobile electronic devices.

STAR – Story Telling and Reading. Star volunteers read aloud with kids of all ages at the library. Reading aloud is fun – and can improve reading skills and encourage a life-long love of books.

- **City library service standards and/or goals that would assist in analyzing the Project's potential impacts from development on local library services.**

On February 8, 2007, The Board of Library Commissioners approved a new Branch Facilities Plan. This Plan includes Criteria for new Libraries, which recommends new size standards for the provision of LAPL facilities – 12,500 s.f. for community with less than 45,000 population and 14,500 s.f. for community with more than 45,000 population and up to 20,000 s.f. for a Regional branch. It also recommends that when a community reaches a population of 90,000, an additional branch library should be considered for the area.

- **Would the Project, either individually or combined with other past, present or anticipated future projects, result in the need for new or altered library facilities? If so, please describe the nature, approximate location and approximate size of the new or altered facility.**

As it currently stands, the John C. Fremont Branch Library does not meet the standard of 12,500 square feet for a service population of less than 45,000. Any increase in the residential/project population that is in close proximity to this branch has a direct impact on library services with increased demands for library staffing, materials, computers and information services. Therefore, mitigation measures may be necessary in order to lessen the impact to these services to a level that is appropriate for a given service population in accordance to the February 8, 2007 Board of Library Commissioners approved Branch Facilities Plan.

The Los Angeles Public Library recommends a mitigation fee of \$200 per capita based upon the projected population of the development. The funds will be used for staff, books, computers and other library materials. It is recommended that mitigation fees be paid for by the developer.

Will and Ariel Durant Branch Library

- Location and hours of operation:
7140 W. Sunset Boulevard
Los Angeles, CA 90046

Mon: 10-8, Tue: 12-8, Wed: 10-8, Thu: 12-8, Fri: 9:30-5:30,
Sat: 9:30-5:30, Sun: Closed

- **Size (Square Feet):**
12,500 square feet

- **Staffing Levels:**
10.5 Full Time employees
- **Number of Volumes and Circulation:**
47,727 volumes /annual circulation – 114,149
- **Programmed or Target Service Population:**
The Los Angeles Public Library (LAPL) does not make targeted projections.
- **Actual population served including the assigned census tracts upon which service population is determined:**
92,851 estimated from LA Times Mapping L.A. database and branch library community boundaries.

The LAPL no longer uses census tracts.

- **Planned, funded, and/or scheduled improvements or expansions to the City library facilities that would serve this Project.**

There are no planned improvements to add capacity through expansion. There are no plans for the development of any other new libraries to serve this community.

- **Special facilities available for the public (i.e., children's reading assistance, homework centers, space for community meetings and programs).**

Free Public Wi-Fi
Wireless Printing
Reserve a Computer
Meeting Room Rental
Zoom Text Computer for the Visually Impaired

The branch is a Virtual Library with multiple computer workstations providing public access to LAPL's on-line library catalog, extensive information databases, and the Internet. This branch also provides WIFI connectivity for mobile electronic devices.

STAR – Story Telling and Reading. Star volunteers read aloud with kids of all ages at the library. Reading aloud is fun – and can improve reading skills and encourage a life-long love of books.

- **City library service standards and/or goals that would assist in analyzing the Project's potential impacts from development on local library services.**

On February 8, 2007, The Board of Library Commissioners approved a new Branch Facilities Plan. This Plan includes Criteria for new Libraries, which recommends new size standards for the provision of LAPL facilities – 12,500 s.f.

Modera Argyle Project

for community with less than 45,000 population and 14,500 s.f. for community with more than 45,000 population and up to 20,000 s.f. for a Regional branch. It also recommends that when a community reaches a population of 90,000, an additional branch library should be considered for the area.

- **Would the Project, either individually or combined with other past, present or anticipated future projects, result in the need for new or altered library facilities? If so, please describe the nature, approximate location and approximate size of the new or altered facility.**

As it currently stands, the Will and Ariel Durant Branch Library does not meet the standard of 14,500 square feet for a service population of more than 45,000. Any increase in the residential/project population that is in close proximity to this branch has a direct impact on library services with increased demands for library staffing, materials, computers and information services. Therefore, mitigation measures may be necessary in order to lessen the impact to these services to a level that is appropriate for a given service population in accordance to the February 8, 2007 Board of Library Commissioners approved Branch Facilities Plan.

The Los Angeles Public Library recommends a mitigation fee of \$200 per capita based upon the projected population of the development. The funds will be used for staff, books, computers and other library materials. It is recommended that mitigation fees be paid for by the developer.

Wilshire Branch Library

- Location and hours of operation:
149 N. Saint Andrews Pl
Los Angeles, CA 90004

Mon: 10-8, Tue: 12-8, Wed: 10-8, Thu: 12-8, Fri: 9:30-5:30,
Sat: 9:30-5:30, Sun: Closed
- **Size (Square Feet):**
6,258 square feet
- **Staffing Levels:**
9.5 Full Time employees
- **Number of Volumes and Circulation:**
33,988 volumes /annual circulation – 90,096
- **Programmed or Target Service Population:**
The Los Angeles Public Library (LAPL) does not make targeted projections.
- **Actual population served including the assigned census tracts upon which service population is determined:**

109,529 estimated from LA Times Mapping L.A. database and branch library community boundaries.

The LAPL no longer uses census tracts.

- **Planned, funded, and/or scheduled improvements or expansions to the City library facilities that would serve this Project.**

There are no planned improvements to add capacity through expansion. There are no plans for the development of any other new libraries to serve this community.

- **Special facilities available for the public (i.e., children's reading assistance, homework centers, space for community meetings and programs).**

Free Public Wi-Fi
Wireless Printing
Reserve a Computer
Meeting Room Rental
Zoom Text Computer for the Visually Impaired

The branch is a Virtual Library with multiple computer workstations providing public access to LAPL's on-line library catalog, extensive information databases, and the Internet. This branch also provides WIFI connectivity for mobile electronic devices.

STAR – Story Telling and Reading. Star volunteers read aloud with kids of all ages at the library. Reading aloud is fun – and can improve reading skills and encourage a life-long love of books.

- **City library service standards and/or goals that would assist in analyzing the Project's potential impacts from development on local library services.**

On February 8, 2007, The Board of Library Commissioners approved a new Branch Facilities Plan. This Plan includes Criteria for new Libraries, which recommends new size standards for the provision of LAPL facilities – 12,500 s.f. for community with less than 45,000 population and 14,500 s.f. for community with more than 45,000 population and up to 20,000 s.f. for a Regional branch. It also recommends that when a community reaches a population of 90,000, an additional branch library should be considered for the area.

- **Would the Project, either individually or combined with other past, present or anticipated future projects, result in the need for new or altered library facilities? If so, please describe the nature, approximate location and approximate size of the new or altered facility.**

As it currently stands, the Wilshire Branch Library does not meet the standard of 14,500 square feet for a service population of more than 45,000. Any increase in

Modera Argyle Project

the residential/project population that is in close proximity to this branch has a direct impact on library services with increased demands for library staffing, materials, computers and information services. Therefore, mitigation measures may be necessary in order to lessen the impact to these services to a level that is appropriate for a given service population in accordance to the February 8, 2007 Board of Library Commissioners approved Branch Facilities Plan.

The Los Angeles Public Library recommends a mitigation fee of \$200 per capita based upon the projected population of the development. The funds will be used for staff, books, computers and other library materials. It is recommended that mitigation fees be paid for by the developer.

Appendix H

Service Agency Letters

Re: Proposed Hollywood & Gower Project

The following is our response to your questions:

1. Which libraries would serve the proposed project?

Frances Howard Goldwyn-Hollywood Regional Branch Library

1. **Libraries that would serve the proposed project:**

Goldwyn-Hollywood Regional Branch Library
1623 N. Ivar Ave.
Hollywood, CA 90028

Hours of Operation:

Monday-Thursday	10 am – 8 pm
Friday, Saturday	9:30 am – 5:30 pm
Sunday	1 pm- 5 pm

2. **Size (Square Feet):**

19,000 sq. ft. facility.

3. **Collection size/Circulation:**

84,939 Volumes/Circulation – 123,046

4. **Current Service Population:**

100,006 estimated from Mapping L.A. and branch library community boundaries.

5. **Staffing Levels:**

14.5 Full-time Employees

6. **Does the Los Angeles Public Library (LAPL) have plans to develop new libraries or expand existing libraries in the Project Area?**

There are no planned improvements to add capacity through expansion or develop new libraries in the Project area.

7. **Does the LAPL implement fee-based assessments (i.e. mitigation fees) to new development projects? If so, how are the fees calculated for commercial, hotel, and office uses?**

The Los Angeles Public Library recommends a mitigation fee of \$200 per capita based upon the projected population of the development. The funds will be used for staff, books, computers and other library materials. It is recommended that mitigation fees be paid by the developer.

Any increase in the residential/business population that is in close proximity to this branch has a direct impact on library services with increased demands for library materials, computers and information services.

8. **Are the libraries (or the library) included in your response to question one adequately meeting the Project area's current demand for library facilities?**

On February 8, 2007, The Board of Library Commissioners approved a new Branch Facilities Plan. This Plan includes Criteria for new Libraries, which recommends new size standards for the provision of LAPL facilities – 12,500 s.f. for community with less than 45,000 population and 14,500 s.f. for community with more than 45,000 population and up to 20,000 s.f. for a Regional branch. It also recommends that when a community reaches a population of 90,000, an additional branch library should be considered for the area.

As it currently stands, the Goldwyn Hollywood branch, at 19,000 square feet, does not meet the standard of adding another branch when the community population reaches 90,000. Any increase in the residential/business population that is in close proximity to this branch has a direct impact on library services with increased demands for library materials, computers and information services. Therefore, mitigation efforts would be needed to bring the branch up to the standards of the Branch Facility Plan.

9. **Would the libraries (or the library) included in your response to question one be able to meet the Project's demand for library facilities?**

No. As stated in the response to question number 8, the Goldwyn Hollywood branch is currently not meeting the demand for the community population of over 90,000 in which another branch should be built according to the Branch Facility Plan.

10. **If your answer to question nine is "no", please provide any recommendations that would eliminate or lessen the Project's impacts on the LAPL.**

As it currently stands, the Goldwyn Hollywood branch, at 19,000 square feet, does not meet the standard of adding another branch when the community population reaches 90,000. Any increase in the residential/business population that is in close proximity to this branch has a direct impact on library services with increased demands for library materials, computers and information services. Therefore, mitigation efforts would be needed to bring the branch up to the standards of the Branch Facility Plan.

Proposed Hollywood & Gower Project

The Los Angeles Public Library recommends a mitigation fee of \$200 per capita based upon the projected population of the development. The funds will be used for staff, books, computers and other library materials. It is recommended that mitigation fees be paid by the developer.

- **Special facilities available for public use:**
 - Free Public Wi-Fi
 - Wireless Printing
 - Reserve a Computer
 - Meeting Room Rental
 - Zoom Text Computer for the Visually Impaired

Will and Ariel Durant Branch Library

1. **Libraries that would serve the proposed project:**

Will and Ariel Branch Library
7140 W. Sunset Boulevard
Los Angeles, CA 90046

Hours of Operation:

Monday, Wednesday	10 am – 8 pm
Tuesday, Thursday	12:00 pm – 8 pm
Friday, Saturday	9:30 am – 5:30 pm
Sunday	CLOSED

2. **Size (Square Feet):**

12,500 sq. ft. facility.

3. **Collection size/Circulation:**

51,119 Volumes/Circulation – 120,831

4. **Current Service Population:**

92,851 estimated from Mapping L.A. and branch library community boundaries.

5. **Staffing Levels:**

10.5 Full-time Employees

6. **Does the Los Angeles Public Library (LAPL) have plans to develop new libraries or expand existing libraries in the Project Area?**

There are no planned improvements to add capacity through expansion or develop new libraries in the Project area.

7. **Does the LAPL implement fee-based assessments (i.e. mitigation fees) to new development projects? If so, how are the fees calculated for commercial, hotel, and office uses?**

The Los Angeles Public Library recommends a mitigation fee of \$200 per capita based upon the projected population of the development. The funds will be used for staff, books, computers and other library materials. It is recommended that mitigation fees be paid by the developer.

Any increase in the residential/business population that is in close proximity to this branch has a direct impact on library services with increased demands for library materials, computers and information services.

Proposed Hollywood & Gower Project

8. **Are the libraries (or the library) included in your response to question one adequately meeting the Project area's current demand for library facilities?**

As it currently stands, the Durant branch, at 12,500 square feet, does not meet the standard of 14,500 square feet for a service population in excess of 45,000 and any increase in the residential/business population that is in close proximity to this branch has a direct impact on library services with increased demands for library materials, computers and information services. Therefore, mitigation efforts would be needed to bring the branch up to the standards of the Branch Facility Plan.

On February 8, 2007, The Board of Library Commissioners approved a new Branch Facilities Plan. This Plan includes Criteria for new Libraries, which recommends new size standards for the provision of LAPL facilities – 12,500 s.f. for community with less than 45,000 population and 14,500 s.f. for community with more than 45,000 population and up to 20,000 s.f. for a Regional branch. It also recommends that when a community reaches a population of 90,000, an additional branch library should be considered for the area.

9. **Would the libraries (or the library) included in your response to question one be able to meet the Project's demand for library facilities?**

No. As stated in the response to question number 8, the Durant branch is currently not meeting the demand for a branch of 12, 500 square feet with a community population in excess of 45,000 according to the Branch Facility Plan.

10. **If your answer to question nine is "no", please provide any recommendations that would eliminate or lessen the Project's impacts on the LAPL.**

As it currently stands, the Durant branch, at 12,500 square feet, does not meet the standard of 14,500 square feet for a service population in excess of 45,000 and any increase in the residential/business population that is in close proximity to this branch has a direct impact on library services with increased demands for library materials, computers and information services. Therefore, mitigation efforts would be needed to bring the branch up to the standards of the Branch Facility Plan.

The Los Angeles Public Library recommends a mitigation fee of \$200 per capita based upon the projected population of the development. The funds will be used for staff, books, computers and other library materials. It is recommended that mitigation fees be paid by the developer.

• **Special facilities available for public use:**

- Free Public Wi-Fi
- Wireless Printing
- Reserve a Computer
- Meeting Room Rental
- Zoom Text Computer for the Visually Impaired

John C. Fremont Branch Library

1. **Libraries that would serve the proposed project:**

John C. Fremont Branch Library
6121 Melrose Ave.
Los Angeles, CA 90038

Hours of Operation:

Monday, Wednesday	10 am – 8 pm
Tuesday, Thursday	12:00 pm – 8 pm
Friday, Saturday	9:30 am – 5:30 pm
Sunday	CLOSED

2. **Size (Square Feet):**

7,361 sq. ft. facility.

3. **Collection size/Circulation:**

38,052 Volumes/Circulation – 101,610

4. **Current Service Population:**

18,418 estimated from Mapping L.A. and branch library community boundaries.

5. **Staffing Levels:**

8.5 Full-time Employees

6. **Does the Los Angeles Public Library (LAPL) have plans to develop new libraries or expand existing libraries in the Project Area?**

There are no planned improvements to add capacity through expansion or develop new libraries in the Project area.

7. **Does the LAPL implement fee-based assessments (i.e. mitigation fees) to new development projects? If so, how are the fees calculated for commercial, hotel, and office uses?**

The Los Angeles Public Library recommends a mitigation fee of \$200 per capita based upon the projected population of the development. The funds will be used for staff, books, computers and other library materials. It is recommended that mitigation fees be paid by the developer.

Any increase in the residential/business population that is in close proximity to this branch has a direct impact on library services with increased demands for library materials, computers and information services.

8. **Are the libraries (or the library) included in your response to question one adequately meeting the Project area's current demand for library facilities?**

As it currently stands, the Fremont branch, at 7,361 square feet, does not meet the standard of 12,500 square feet for a service population of less than 45,000 and any increase in the residential/business population that is in close proximity to this branch has a direct impact on library services with increased demands for library materials, computers and information services. Therefore, mitigation efforts would be needed to bring the branch up to the standards of the Branch Facility Plan.

On February 8, 2007, The Board of Library Commissioners approved a new Branch Facilities Plan. This Plan includes Criteria for new Libraries, which recommends new size standards for the provision of LAPL facilities – 12,500 s.f. for community with less than 45,000 population and 14,500 s.f. for community with more than 45,000 population and up to 20,000 s.f. for a Regional branch. It also recommends that when a community reaches a population of 90,000, an additional branch library should be considered for the area.

9. **Would the libraries (or the library) included in your response to question one be able to meet the Project's demand for library facilities?**

No. As stated in the response to question number 8, the Fremont branch is currently not meeting the demand for a branch of 12,500 square feet with a community population of less than 45,000 according to the Branch Facility Plan.

10. **If your answer to question nine is "no", please provide any recommendations that would eliminate or lessen the Project's impacts on the LAPL.**

As it currently stands, the Fremont branch, at 7,361 square feet, does not meet the standard of 12,500 square feet for a service population of less than 45,000 and any increase in the residential/business population that is in close proximity to this branch has a direct impact on library services with increased demands for library materials, computers and information services. Therefore, mitigation efforts would be needed to bring the branch up to the standards of the Branch Facility Plan.

The Los Angeles Public Library recommends a mitigation fee of \$200 per capita based upon the projected population of the development. The funds will be used for staff, books, computers and other library materials. It is recommended that mitigation fees be paid by the developer.

• **Special facilities available for public use:**

- Free Public Wi-Fi
- Wireless Printing
- Reserve a Computer
- Meeting Room Rental
- Zoom Text Computer for the Visually Impaired

Fairfax Branch Library

1. **Libraries that would serve the proposed project:**

Fairfax Branch Library
161 S. Gardner Street
Los Angeles, CA 90036

Hours of Operation:

Monday, Wednesday	10 am – 8 pm
Tuesday, Thursday	12:00 pm – 8 pm
Friday, Saturday	9:30 am – 5:30 pm
Sunday	CLOSED

2. **Size (Square Feet):**

12,500 sq. ft. facility.

3. **Collection size/Circulation:**

52,262 Volumes/Circulation – 209,707

4. **Current Service Population:**

36,336 estimated from Mapping L.A. and branch library community boundaries.

5. **Staffing Levels:**

11.0 Full-time Employees

6. **Does the Los Angeles Public Library (LAPL) have plans to develop new libraries or expand existing libraries in the Project Area?**

There are no planned improvements to add capacity through expansion or develop new libraries in the Project area.

7. **Does the LAPL implement fee-based assessments (i.e. mitigation fees) to new development projects? If so, how are the fees calculated for commercial, hotel, and office uses?**

The Los Angeles Public Library recommends a mitigation fee of \$200 per capita based upon the projected population of the development. The funds will be used for staff, books, computers and other library materials. It is recommended that mitigation fees be paid by the developer.

Any increase in the residential/business population that is in close proximity to this branch has a direct impact on library services with increased demands for library materials, computers and information services.

8. **Are the libraries (or the library) included in your response to question one adequately meeting the Project area's current demand for library facilities?**

As it currently stands, the Fairfax branch, at 12,500 square feet, does meet the standard of 12,500 square feet for a service population of less than 45,000, however, any increase in the residential/business population that is in close proximity to this branch has a direct impact on library services with increased demands for library materials, computers and information services. Therefore, mitigation efforts may be needed to bring the branch up to the standards of the Branch Facility Plan due to future development that increase the community population.

On February 8, 2007, The Board of Library Commissioners approved a new Branch Facilities Plan. This Plan includes Criteria for new Libraries, which recommends new size standards for the provision of LAPL facilities – 12,500 s.f. for community with less than 45,000 population and 14,500 s.f. for community with more than 45,000 population and up to 20,000 s.f. for a Regional branch. It also recommends that when a community reaches a population of 90,000, an additional branch library should be considered for the area.

9. **Would the libraries (or the library) included in your response to question one be able to meet the Project's demand for library facilities?**

Yes. As stated in the response to question number 8, the Fairfax branch is currently meeting the demand for a branch of 12,500 square feet with a community population of less than 45,000 according to the Branch Facility Plan, however, depending on the project development, the community population could increase to the point where mitigation efforts may be needed.

10. **If your answer to question nine is "no", please provide any recommendations that would eliminate or lessen the Project's impacts on the LAPL.**

As stated in the response to question number 8, the Fairfax branch is currently meeting the demand for a branch of 12,500 square feet with a community population of less than 45,000 according to the Branch Facility Plan, however, depending on the project development, the community population could increase to the point where mitigation efforts may be needed.

The Los Angeles Public Library recommends a mitigation fee of \$200 per capita based upon the projected population of the development. The funds will be used for staff, books, computers and other library materials. It is recommended that mitigation fees be paid by the developer.

• **Special facilities available for public use:**

- Free Public Wi-Fi
- Wireless Printing
- Reserve a Computer
- Meeting Room Rental
- Zoom Text Computer for the Visually Impaired

Wilshire Branch Library

1. **Libraries that would serve the proposed project:**

Wilshire Branch Library
149 N. St. Andrews Place
Los Angeles, CA 90044

Hours of Operation:

Monday, Wednesday	10 am – 8 pm
Tuesday, Thursday	12:00 pm – 8 pm
Friday, Saturday	9:30 am – 5:30 pm
Sunday	CLOSED

2. **Size (Square Feet):**

6,258 sq. ft. facility.

3. **Collection size/Circulation:**

33,988 Volumes/Circulation – 107,838

4. **Current Service Population:**

109,529 estimated from Mapping L.A. and branch library community boundaries.

5. **Staffing Levels:**

9.5 Full-time Employees

6. **Does the Los Angeles Public Library (LAPL) have plans to develop new libraries or expand existing libraries in the Project Area?**

There are no planned improvements to add capacity through expansion or develop new libraries in the Project area.

7. **Does the LAPL implement fee-based assessments (i.e. mitigation fees) to new development projects? If so, how are the fees calculated for commercial, hotel, and office uses?**

The Los Angeles Public Library recommends a mitigation fee of \$200 per capita based upon the projected population of the development. The funds will be used for staff, books, computers and other library materials. It is recommended that mitigation fees be paid by the developer.

Any increase in the residential/business population that is in close proximity to this branch has a direct impact on library services with increased demands for library materials, computers and information services.

8. **Are the libraries (or the library) included in your response to question one adequately meeting the Project area's current demand for library facilities?**

As it currently stands, the Wilshire branch, at 6,258 square feet, does not meet the standard of 14,500 square feet for a service population in excess of 45,000 and adding an additional branch library when the community population is in excess of 90,000. Any increase in the residential/business population that is in close proximity to this branch has a direct impact on library services with increased demands for library materials, computers and information services. Therefore, mitigation efforts would be needed to bring the branch up to the standards of the Branch Facility Plan.

On February 8, 2007, The Board of Library Commissioners approved a new Branch Facilities Plan. This Plan includes Criteria for new Libraries, which recommends new size standards for the provision of LAPL facilities – 12,500 s.f. for community with less than 45,000 population and 14,500 s.f. for community with more than 45,000 population and up to 20,000 s.f. for a Regional branch. It also recommends that when a community reaches a population of 90,000, an additional branch library should be considered for the area.

9. **Would the libraries (or the library) included in your response to question one be able to meet the Project's demand for library facilities?**

No. As stated in the response to question number 8, the Wilshire branch is currently not meeting the demand for a branch of 14,500 square feet with a community population in excess of 45,000 and adding an additional branch library for a community population in excess of 90,000 according to the Branch Facility Plan.

10. **If your answer to question nine is "no", please provide any recommendations that would eliminate or lessen the Project's impacts on the LAPL.**

As it currently stands, the Wilshire branch, at 6,258 square feet, does not meet the standard of 14,500 square feet for a service population in excess of 45,000 and adding an additional branch library when the community population is in excess of 90,000. Any increase in the residential/business population that is in close proximity to this branch has a direct impact on library services with increased demands for library materials, computers and information services. Therefore, mitigation efforts would be needed to bring the branch up to the standards of the Branch Facility Plan.

The Los Angeles Public Library recommends a mitigation fee of \$200 per capita based upon the projected population of the development. The funds will be used for staff, books, computers and other library materials. It is recommended that mitigation fees be paid by the developer.

• **Special facilities available for public use:**

- Free Public Wi-Fi
- Wireless Printing
- Reserve a Computer
- Meeting Room Rental
- Zoom Text Computer for the Visually Impaired