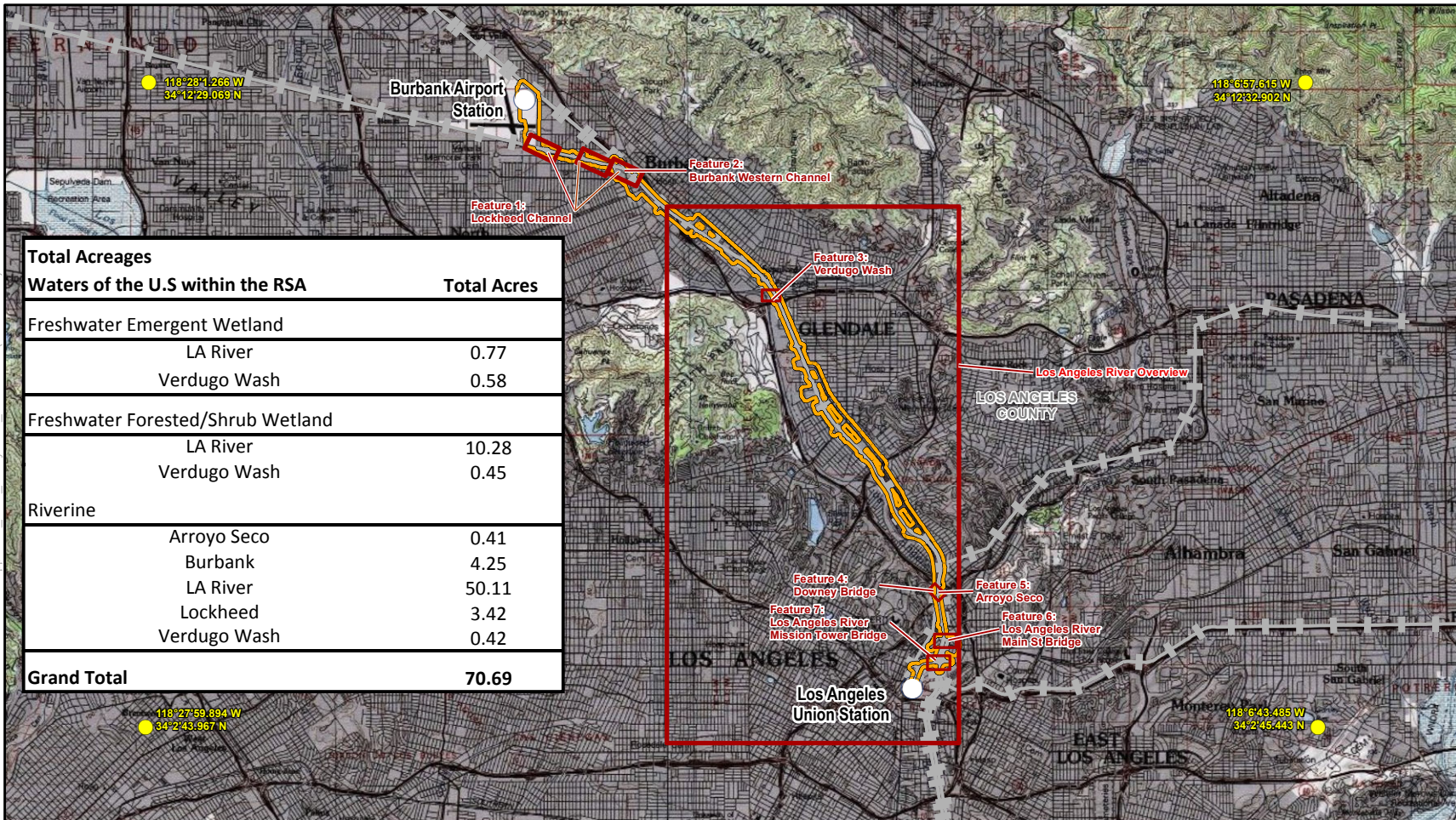
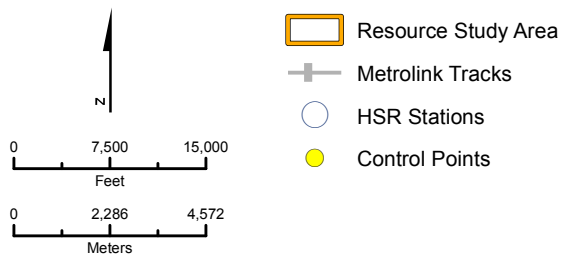


FILE: I:\ST11501\GIS\MXDs\BIO\VAR\DRAppAUD\_NWI\_StudyArea\_Index.mxd (11/19/2019)



PRELIMINARY DRAFT/SUBJECT TO CHANGE - HSR ALIGNMENT IS NOT DETERMINED  
SOURCE: USGS/Esri (2018); NWI (2017); CHSRA(11/2019)

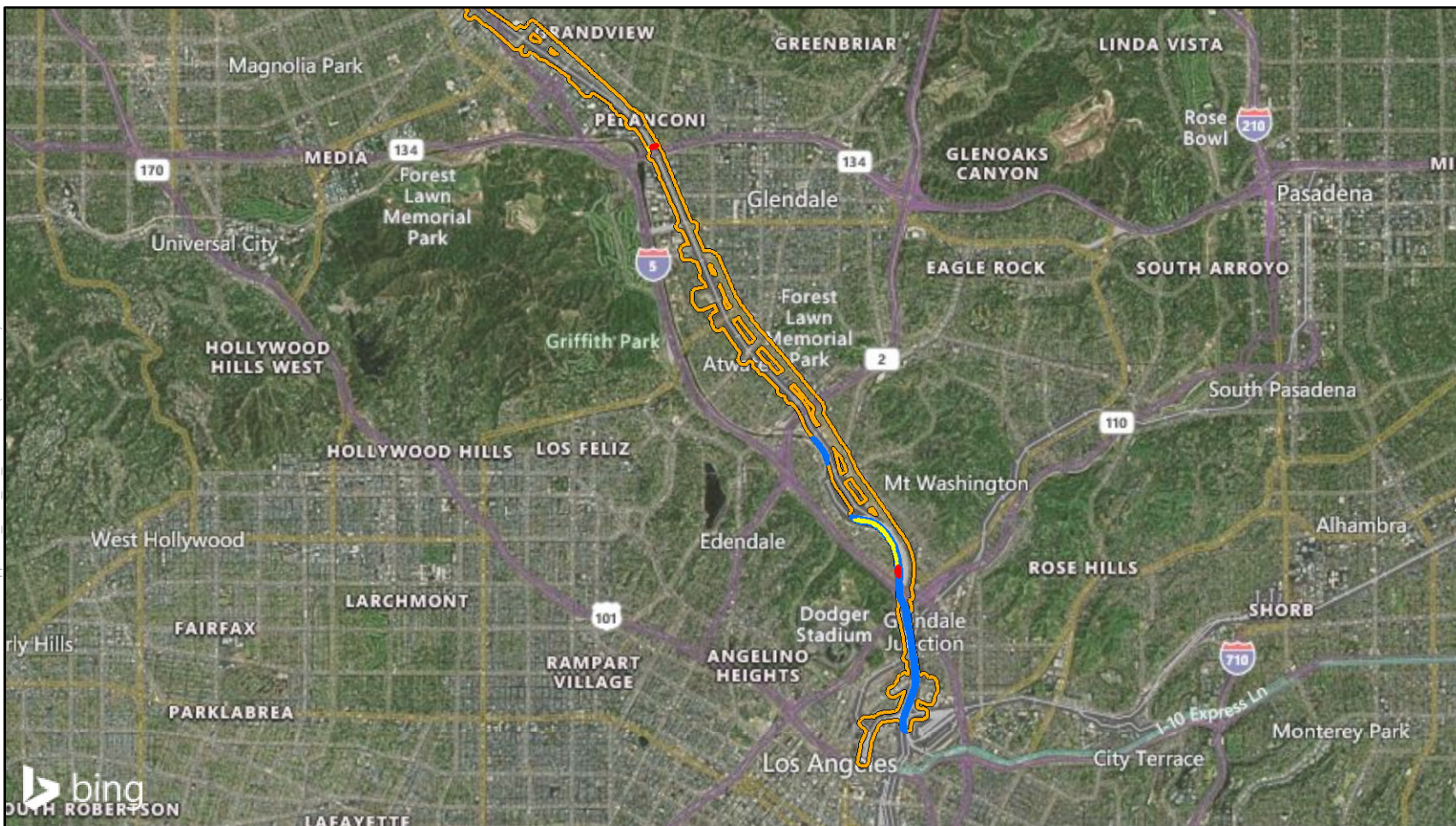


## Appendix A Sheet 1 of 9

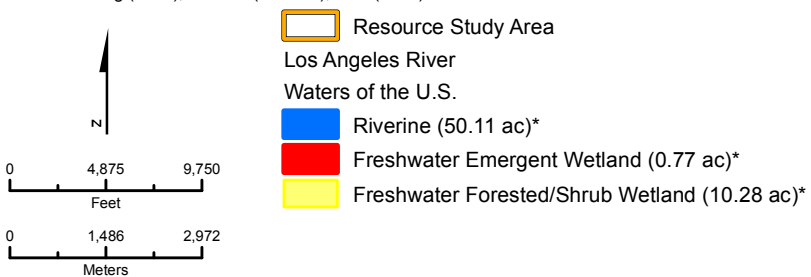
Delineated Aquatic Resources  
in the Resource Study Area



FILE: HST11501\GIS\MXDs\BIO\ARDR\AppAUD\_NWI\_LA\_River.mxd (11/19/2019)



PRELIMINARY DRAFT/SUBJECT TO CHANGE - HSR ALIGNMENT IS NOT DETERMINED  
 SOURCE: Bing (2018); CHSRA (11/2019); NWI (2017)

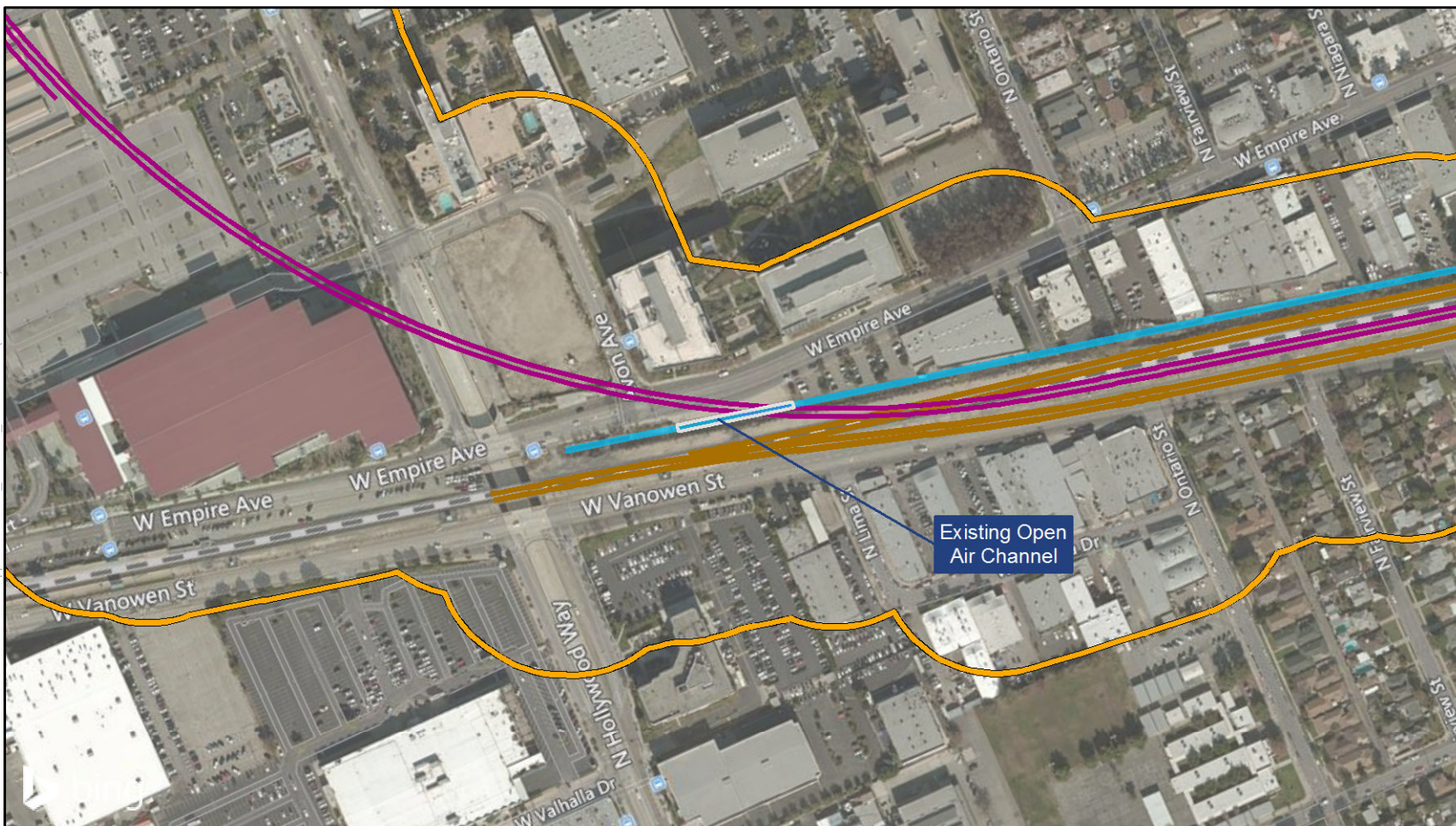


\* Verdugo Wash acreages shown on sheet 5

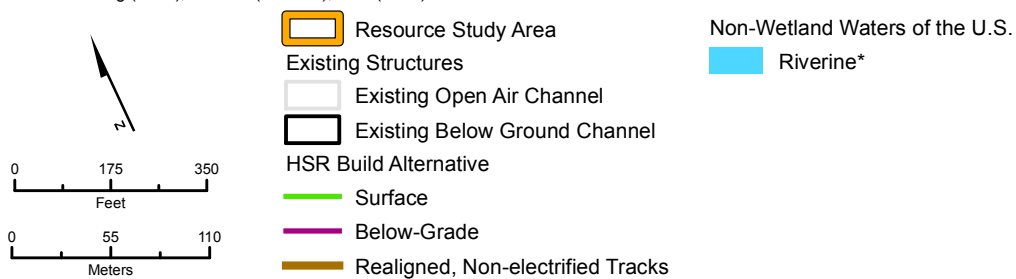
**Appendix A**  
**Los Angeles River Overview**  
**Sheet 2 of 9**  
 Delineated Aquatic Resources  
 in the Resource Study Area



FILE: HST11501\GIS\MXDs\BIO\WARD\RA\Lockhead\_Channel\_Review.mxd (11/19/2019)



PRELIMINARY DRAFT/SUBJECT TO CHANGE - HSR ALIGNMENT IS NOT DETERMINED  
 SOURCE: Bing (2018); CHSRA (11/2019); NWI (2017)



\* Riverine acreages shown on sheet 1

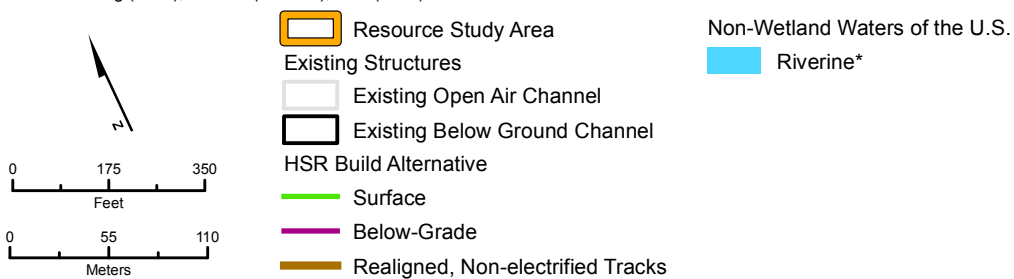
**Appendix A**  
**Feature 1- Lockhead Channel**  
**Feature 2 - Burbank**  
**Western Channel**  
**Sheet 3 of 9**  
 Delineated Aquatic Resources  
 in the Resource Study Area



FILE: HST11501\GIS\MXDs\BIO\ARD\RA\Lockheed\_Channel\_Review.mxd (11/19/2019)



PRELIMINARY DRAFT/SUBJECT TO CHANGE - HSR ALIGNMENT IS NOT DETERMINED  
 SOURCE: Bing (2018); CHSRA (11/2019); NWI (2017)



\* Riverine acreages shown on sheet 1

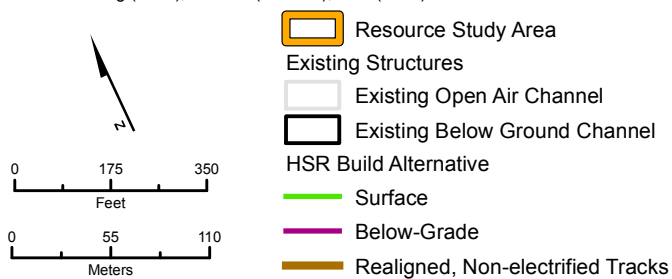
**Appendix A**  
**Feature 1- Lockheed Channel**  
**Feature 2 - Burbank**  
**Western Channel**  
**Sheet 4 of 9**  
 Delineated Aquatic Resources  
 in the Resource Study Area





FILE: HST11501\GIS\MXDs\BIO\AR\DRApp\Lockheed\_Channel\_Review.mxd (11/19/2019)

PRELIMINARY DRAFT/SUBJECT TO CHANGE - HSR ALIGNMENT IS NOT DETERMINED  
SOURCE: Bing (2018); CHSRA (11/2019); NWI (2017)

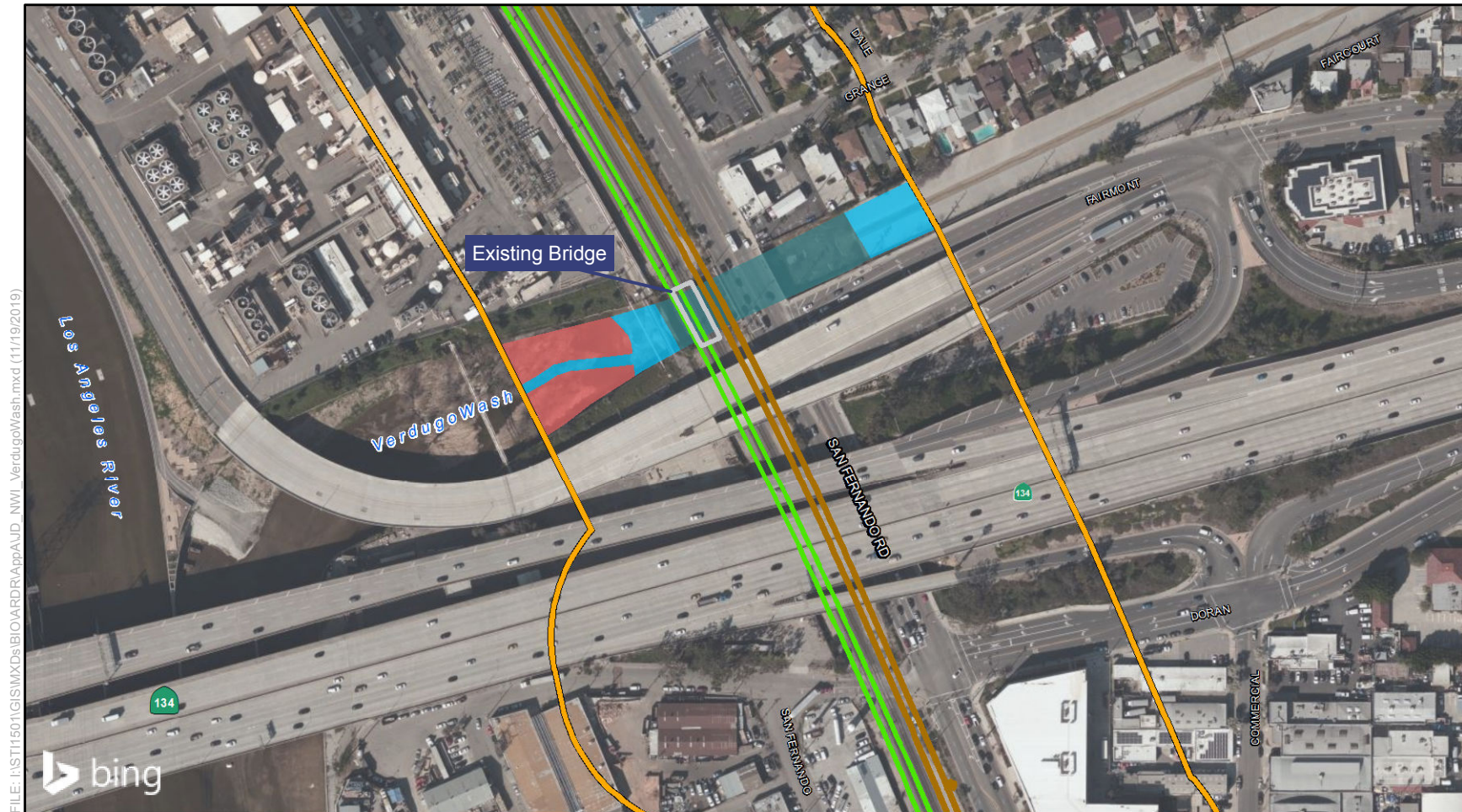


Non-Wetland Waters of the U.S.  
Riverine\*

\* Riverine acreages shown on sheet 1

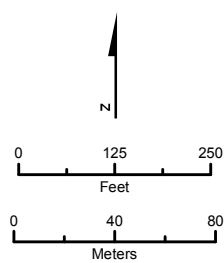
**Appendix A**  
**Feature 1- Lockheed Channel**  
**Feature 2 - Burbank**  
**Western Channel**  
**Sheet 5 of 9**  
Delineated Aquatic Resources  
in the Resource Study Area





FILE: HST11501\GIS\MXDs\BIO\ARDRAppAUD\_NWI\_VerdugoWash.mxd (11/19/2019)

PRELIMINARY DRAFT/SUBJECT TO CHANGE - HSR ALIGNMENT IS NOT DETERMINED  
SOURCE: Bing (2018); CHSRA (11/2019); NWI (2017)



- Resource Study Area
- Existing Structure

Verdugo Wash  
Potential Wetland Waters of the U.S.  
 Freshwater Forested/Shrub Wetland (0.45 ac)  
 Freshwater Emergent Wetland (0.58 ac)  
 Non-Wetland Waters of the U.S.  
 Riverine (0.42 ac)

**Appendix A**  
**Feature 3 - Verdugo Wash**  
**Sheet 6 of 9**

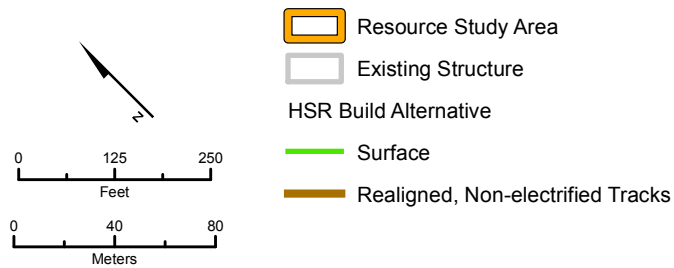
Delineated Aquatic Resources  
in the Resource Study Area



FILE: HST11501\GIS\MXDs\BIO\ARDRAppAUD\_NWI\_LA\_RivDowneyBridge.mxd (11/19/2019)



PRELIMINARY DRAFT/SUBJECT TO CHANGE - HSR ALIGNMENT IS NOT DETERMINED  
 SOURCE: Bing (2018); CHSRA (11/2019); NWI (2017)



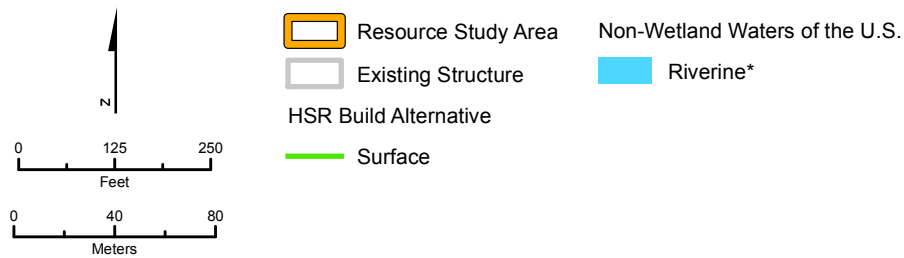
**Appendix A**  
**Feature 4 - Downey Bridge**  
**Feature 5 - Arroyo Seco**  
**Sheet 7 of 9**

Delineated Aquatic Resources  
 in the Resource Study Area





PRELIMINARY DRAFT/SUBJECT TO CHANGE - HSR ALIGNMENT IS NOT DETERMINED  
 SOURCE: Bing (2018); CHSRA (11/2019); NWI (2017)



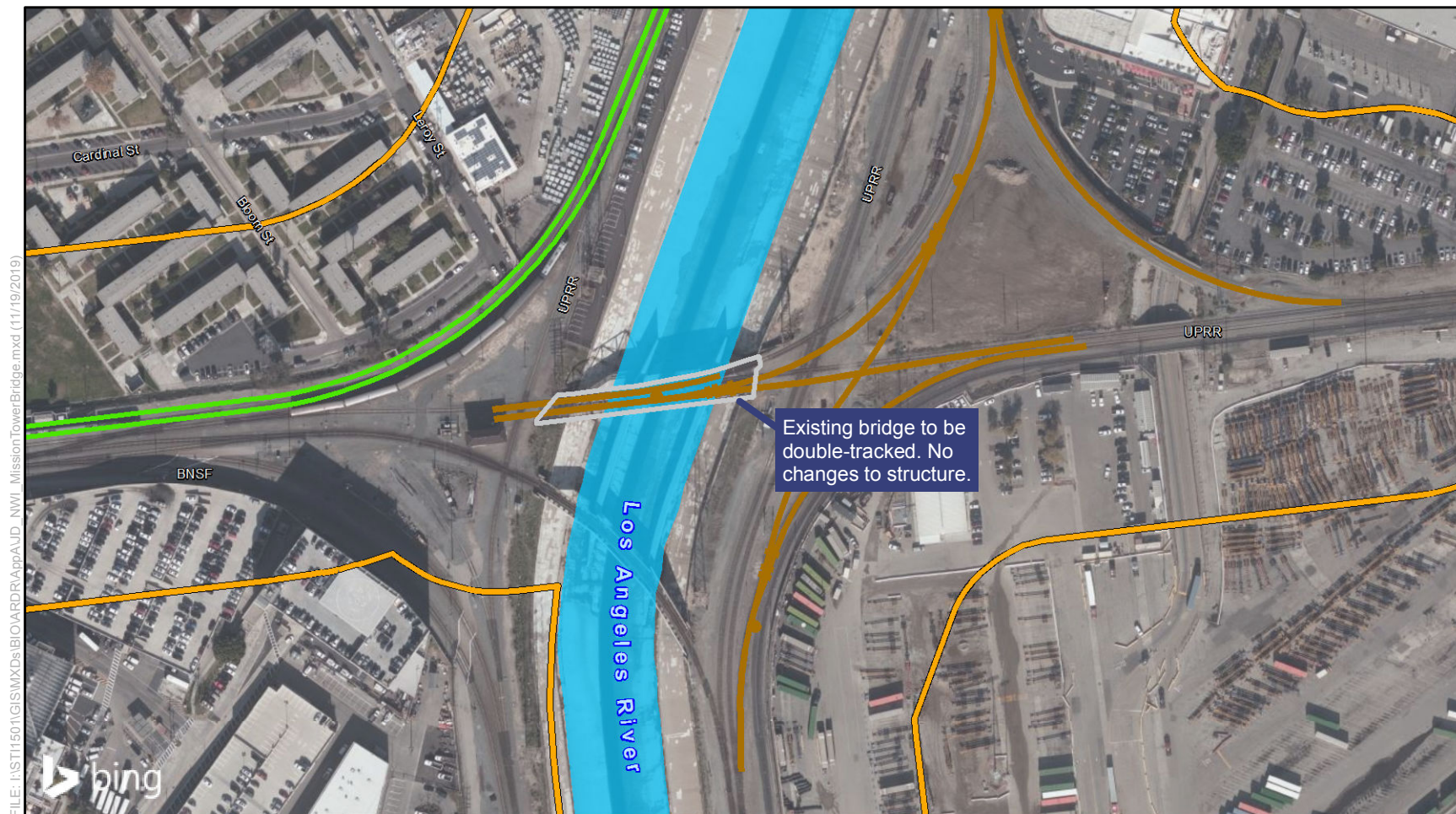
\* Riverine Acreage is Shown on Sheet 1

## Appendix A

### Feature 6 - Main St Bridge Sheet 8 of 9

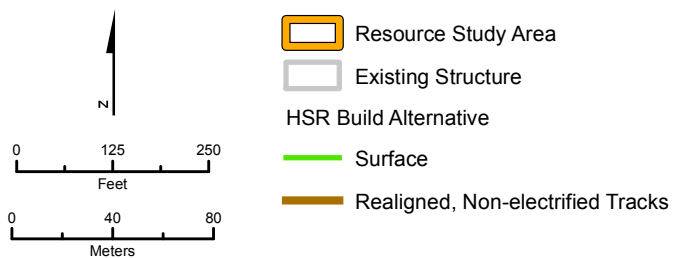
Delineated Aquatic Resources  
 in the Resource Study Area





FILE: HST11501\GIS\MXDs\BIO\VAR\BDRAppAUD\_NWI\_MissionTowerBridge.mxd (11/19/2019)

PRELIMINARY DRAFT/SUBJECT TO CHANGE - HSR ALIGNMENT IS NOT DETERMINED  
SOURCE: Bing (2018); CHSRA (11/2019); NWI (2017)



\* Riverine Acreage is Shown on Sheet 1

**Appendix A**  
**Feature 7 - Mission Tower Bridge**  
**Sheet 9 of 9**

Delineated Aquatic Resources  
in the Resource Study Area