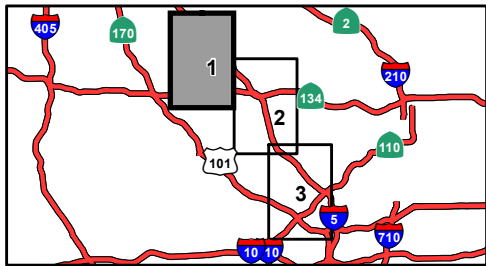
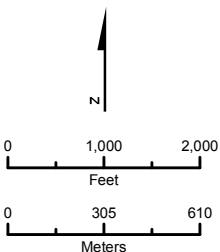


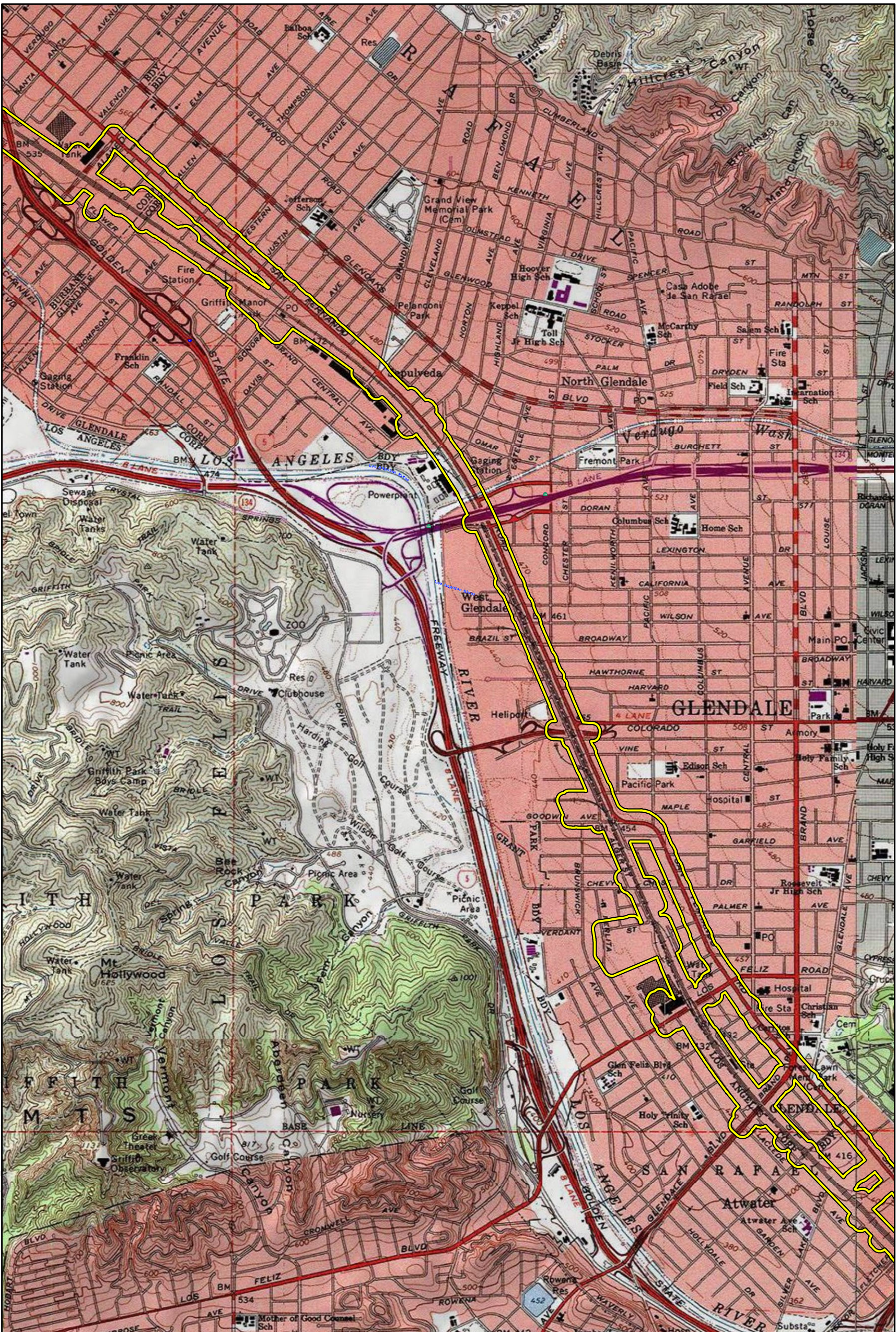
PRELIMINARY DRAFT/SUBJECT TO CHANGE - HSR ALIGNMENT IS NOT DETERMINED
SOURCE: USGS 7.5' Quad Burbank (1994); Los Angeles (1994); Hollywood (1981), CA; CHSRA (11/2019)

- Paleontological Resources Resource Study Area
- HSR Stations




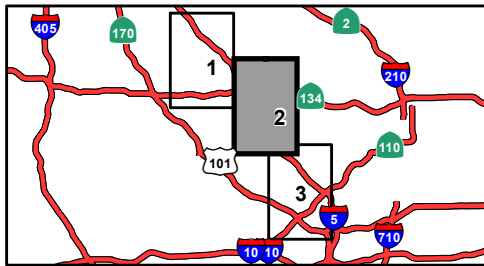
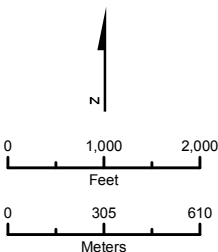
APPENDIX C
Sheet 1 of 3

Paleontological Resources
Study Area Map



PRELIMINARY DRAFT/SUBJECT TO CHANGE - HSR ALIGNMENT IS NOT DETERMINED
SOURCE: USGS 7.5' Quad Burbank (1994); Los Angeles (1994); Hollywood (1981), CA; CHSRA (11/2019)

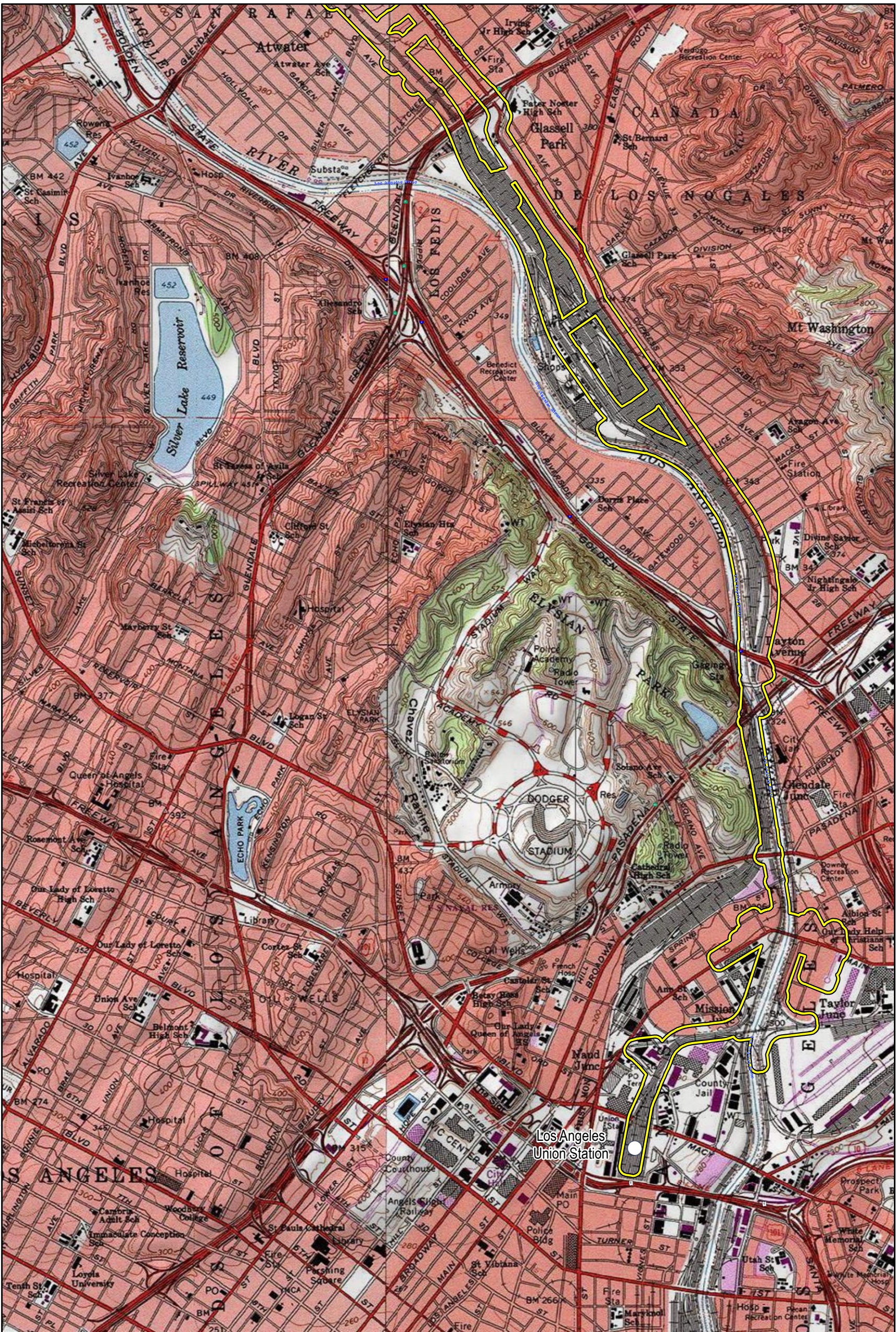
 Paleontological Resources Resource Study Area



APPENDIX C
Sheet 2 of 3

Paleontological Resources
Study Area Map

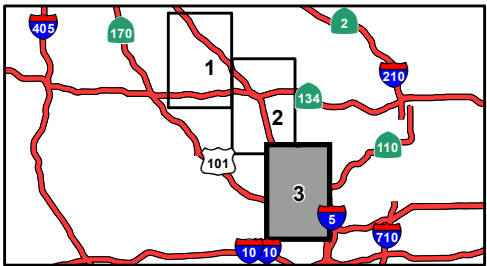
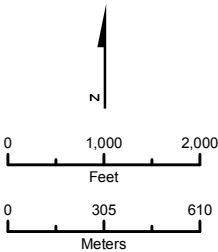
California High-Speed Rail Authority



FILE: I:\ST11501\GIS\MXDs\Paleo\Proj\Loc_USGS.mxd (11/18/2019)

PRELIMINARY DRAFT/SUBJECT TO CHANGE - HSR ALIGNMENT IS NOT DETERMINED
SOURCE: USGS 7.5' Quad Burbank (1994); Los Angeles (1994); Hollywood (1981), CA.; CHSRA (11/2019)

- Paleontological Resources Resource Study Area
- HSR Stations



APPENDIX C
Sheet 3 of 3

**Paleontological Resources
Study Area Map**