

**PROSPECT ISLAND TIDAL HABITAT RESTORATION PROJECT
(SCH# 2013052056)**

NOTICE OF DETERMINATION ATTACHMENT 1

PROJECT LOCATION

Prospect Island is located immediately east of, and technically is still an element of, the southern end of the Yolo Bypass in the Sacramento-San Joaquin River Delta. The site is bounded on the east by Miner Slough, on the west by the Sacramento Deep Water Ship Channel (DWSC), on the south by the confluence of the DWSC and Miner Slough, and on the north by an east-west levee that runs from Arrowhead Harbor Marina to the DWSC. Figure 1 shows the Project location.

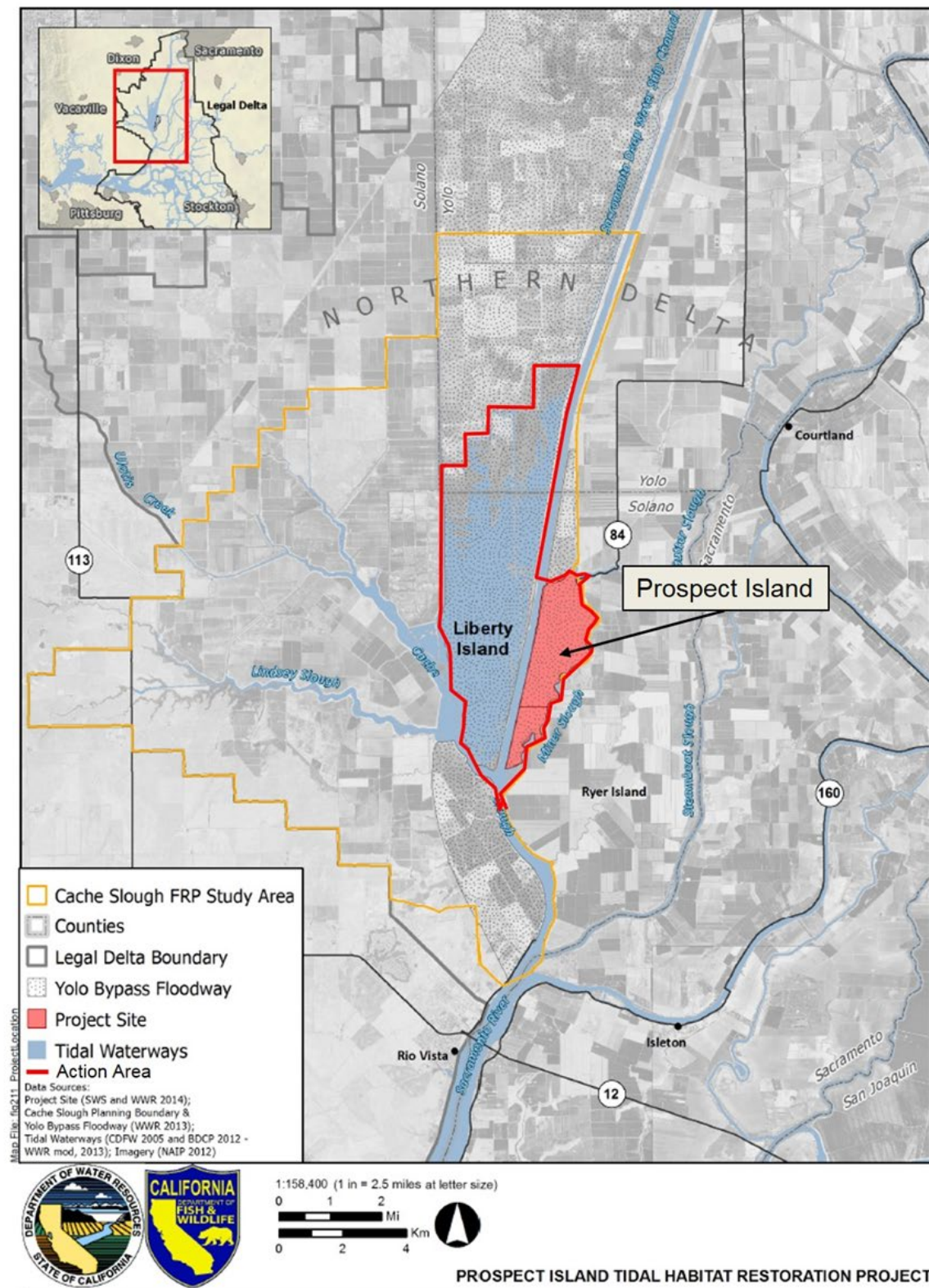


Figure 1: Prospect Island - the proposed habitat restoration location is in the Cache Slough Complex, northern Sacramento-San Joaquin Delta, California.

Prospect Island Tidal Habitat Restoration Project (SCH# 2013052056)

PROJECT DESCRIPTION

The fundamental purpose and overarching goal of the Prospect Island Tidal Habitat Restoration Project is to restore tidal action to the interior of Prospect Island. The proposal is intended to partially fulfill the 8,000 ac tidal habitat restoration obligations of DWR contained in the USFWS *Biological Opinion for the Reinitiation of Consultation on the Coordinated Operations of the Central Valley Project and the State Water Project* issued on October 21, 2019. In addition, Section 9.1.1 of the Incidental Take Permit for Long-Term Operation of the State Water Project in the Sacramento-San Joaquin Delta (2081-2019-066-00), issued by the California Department of Fish and Wildlife on March 31, 2020, carries forward the 8,000-acre tidal habitat restoration requirement as compensatory mitigation for activities under the 2020 LTO ITP.

In 2019, a Final Environmental Impact Report for the Prospect Island Tidal Habitat Restoration Project was prepared by DWR and CDFW in accordance with the California Environmental Quality Act and was certified in February 2019 (<https://ceqanet.opr.ca.gov/2013052056/3>). The 2019 FEIR evaluated the impacts and mitigation measures associated with the Prospect Island Tidal Habitat Restoration Project. The 2019 FEIR assumed site access via public roads, levee roads, and or barge on the Sacramento Deep Water Ship Canal. However, project proponents are further refining the project access to include a temporary road through private property (Figure 2) in Yolo County north of the Yolo/Solano County line and west of County Road 107. The modification to the access road would be a 700 ft constructed ramp that connects County Road 107 to a private road that would allow vehicle and heavy equipment access to the Project site via the DWSC levee that runs along the east side of the DWSC, south to the west side of Prospect Island.

This Addendum assesses the potential changes to previously evaluated environmental impacts resulting from the construction of a 700-foot long ramp along the access route, resulting from a revision to the construction project access route.

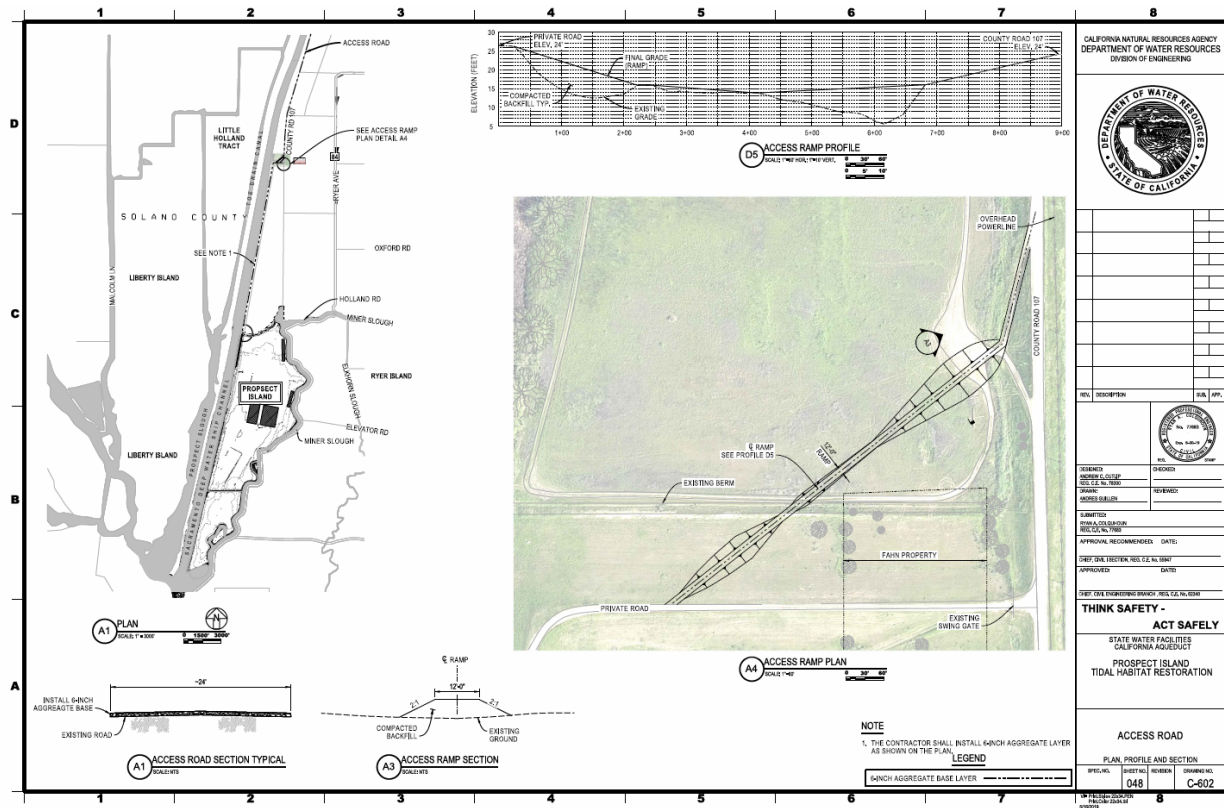


Figure 2: Prospect Island restoration Alternative 2, described in the 2019 Final Environmental Impact Report.