

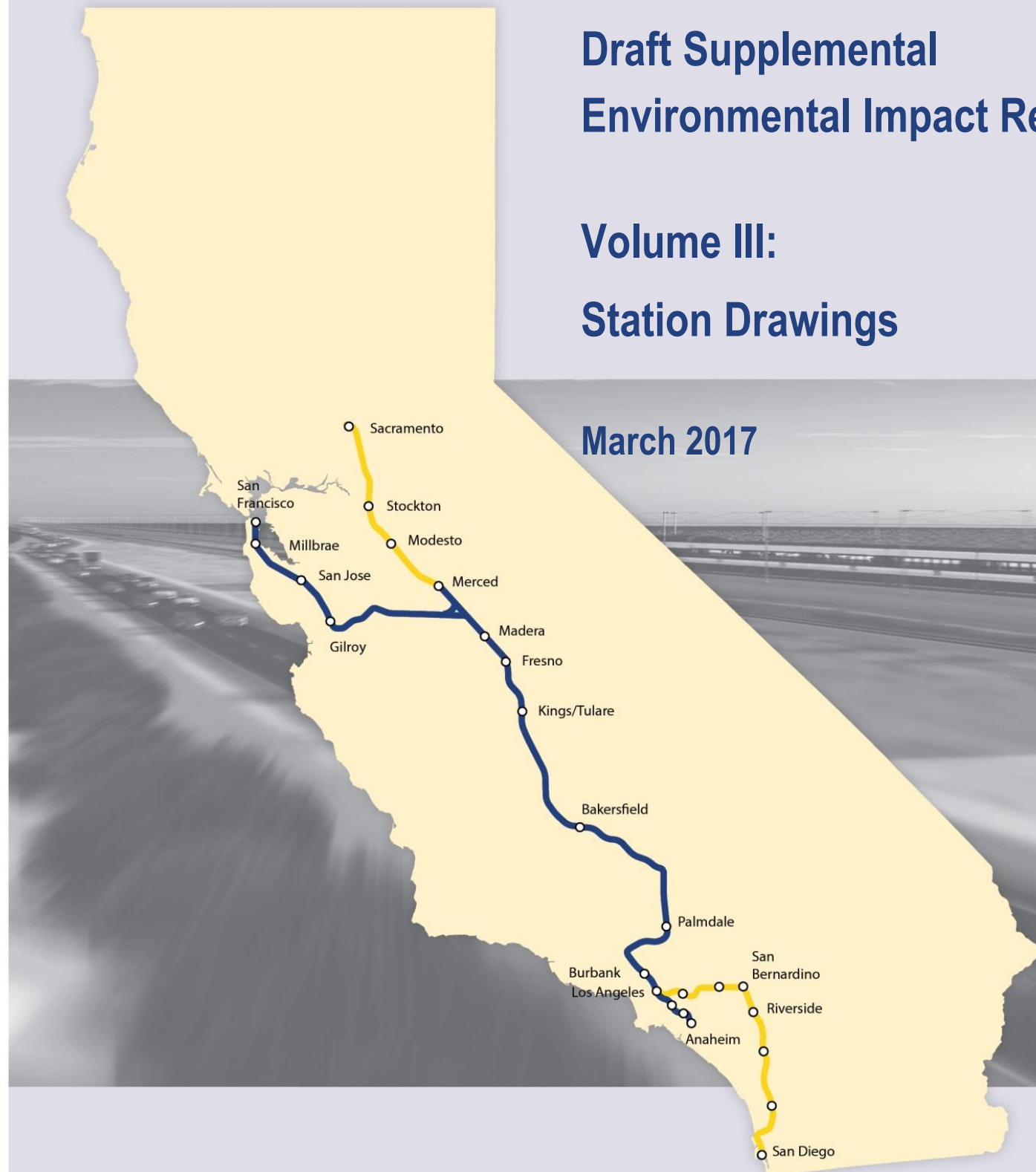
California High-Speed Rail Authority

# ***Fresno to Bakersfield Section***

**Draft Supplemental  
Environmental Impact Report / Environmental Impact Statement**

**Volume III:  
Station Drawings**

**March 2017**



c:\temp\491510.000\_HSR\_Bakersfield\_Stn\_giaramidaro.rvt

11/4/2016 3:37:00 PM

REV	DATE	BY	CHK	APP	DESCRIPTION

DESIGNED BY L. Giaramidaro
DRAWN BY S. Ahmadzai
CHECKED BY P. Cowcher
IN CHARGE G. Silwal
DATE 10/28/16

PEPD RECORD SET  
DESIGN  
SUBMISSION  
  
NOT FOR  
CONSTRUCTION

TYLININTERNATIONAL



CALIFORNIA  
HIGH-SPEED RAIL AUTHORITY

CALIFORNIA HIGH-SPEED TRAIN PROJECT  
FRESNO TO BAKERSFIELD  
  
LOCALLY GENERATED ALTERNATIVE  
  
BAKERSFIELD F STREET STATION  
INDEX OF DRAWINGS

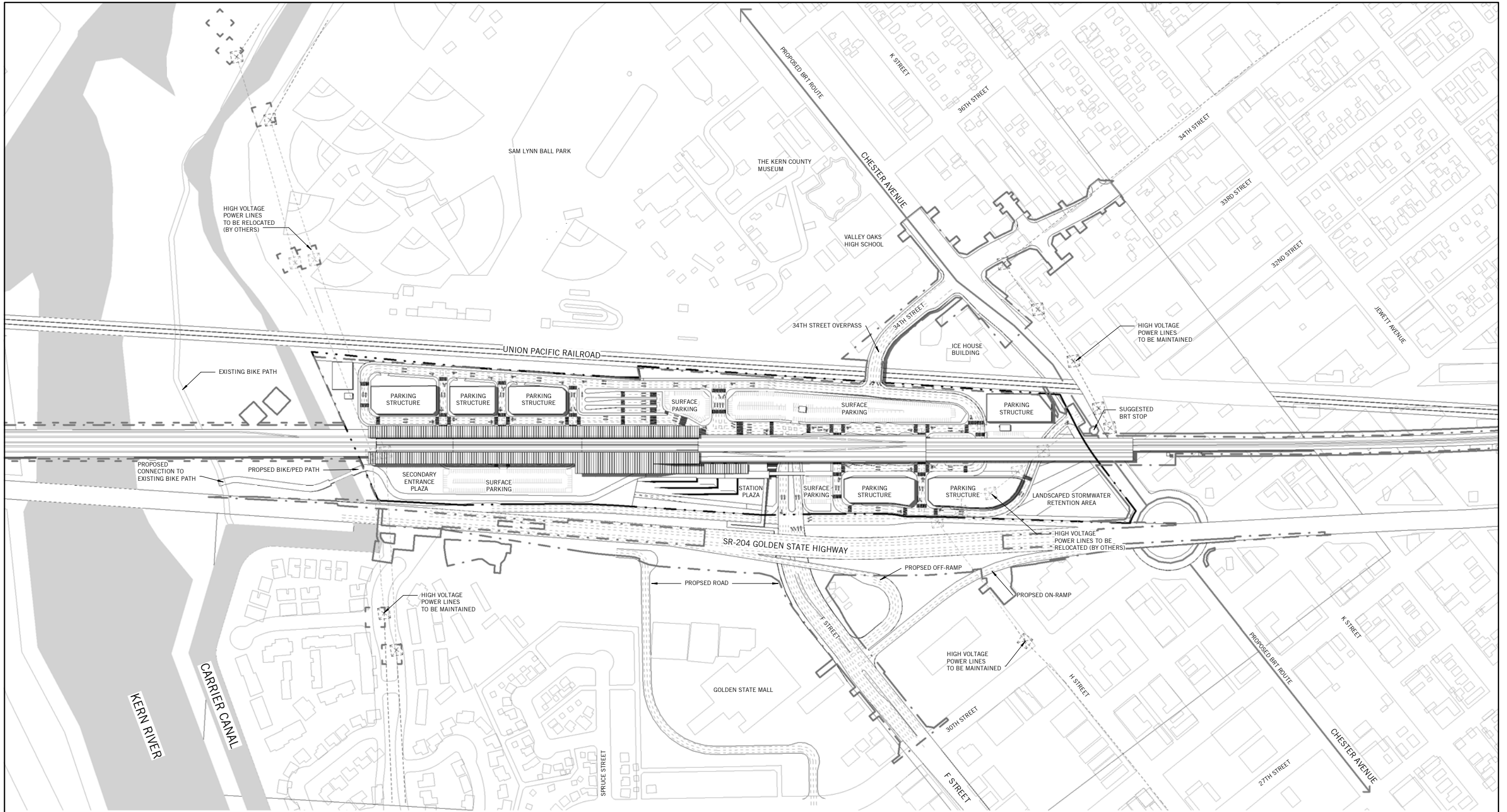
CONTRACT NO.	HSR13-44
DRAWING NO.	G00-01
SCALE	N/A
SHEET NO.	

SHEET INDEX	
NUMBER	SHEET NAME
01-GENERAL	
G00-00	COVER SHEET
G00-01	INDEX OF DRAWINGS
04-ARCHITECTURAL	
A0001	ARCHITECTURAL ABBREVIATIONS SYMBOLS AND GENERAL NOTES
A1801	SITE CONTEXT ROOF PLAN
A1802	STATION SITE PLAN
A1810	PLAZA AND TRANSIT CENTER KEY PLAN
A1811	CONCOURSE KEY PLAN
A1812	MEZZANINE KEY PLAN
A1813	PLATFORM LEVEL KEY PLAN
A1814	CONCOURSE FLOOR PLAN-MAIN ENTRANCE
A1815	MEZZANINE FLOOR PLAN-MAIN ENTRANCE
A1816	PLATFORM FLOOR PLAN-MAIN ENTRANCE
A1817	CONCOURSE FLOOR PLAN-SECONDARY ENTRANCE
A1818	MEZZANINE FLOOR PLAN-SECONDARY ENTRANCE
A3801	LONGITUDINAL SECTION
A3802	BUILDING SECTION & ELEVATION
A6801	ROOM SCHEDULE
A9801	AXONOMETRIC VIEW
A9802	PRESPECTIVE VIEWS
A9803	AERIAL VIEW

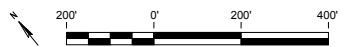
[illegible]

c:\temp\491510.000\_HSR\_Bakersfield\_Stn\_giaramidaro.rvt

11/4/2016 3:34:22 PM



1 SITE CONTEXT ROOF PLAN  
1" = 200'-0"



REV	DATE	BY	CHK	APP	DESCRIPTION

DESIGNED BY L. Giaramidaro
DRAWN BY S. Ahmadzai
CHECKED BY P. Cowcher
IN CHARGE G. Sitwal
DATE 10/28/16

PEPD RECORD SET  
DESIGN  
SUBMISSION  
  
NOT FOR  
CONSTRUCTION

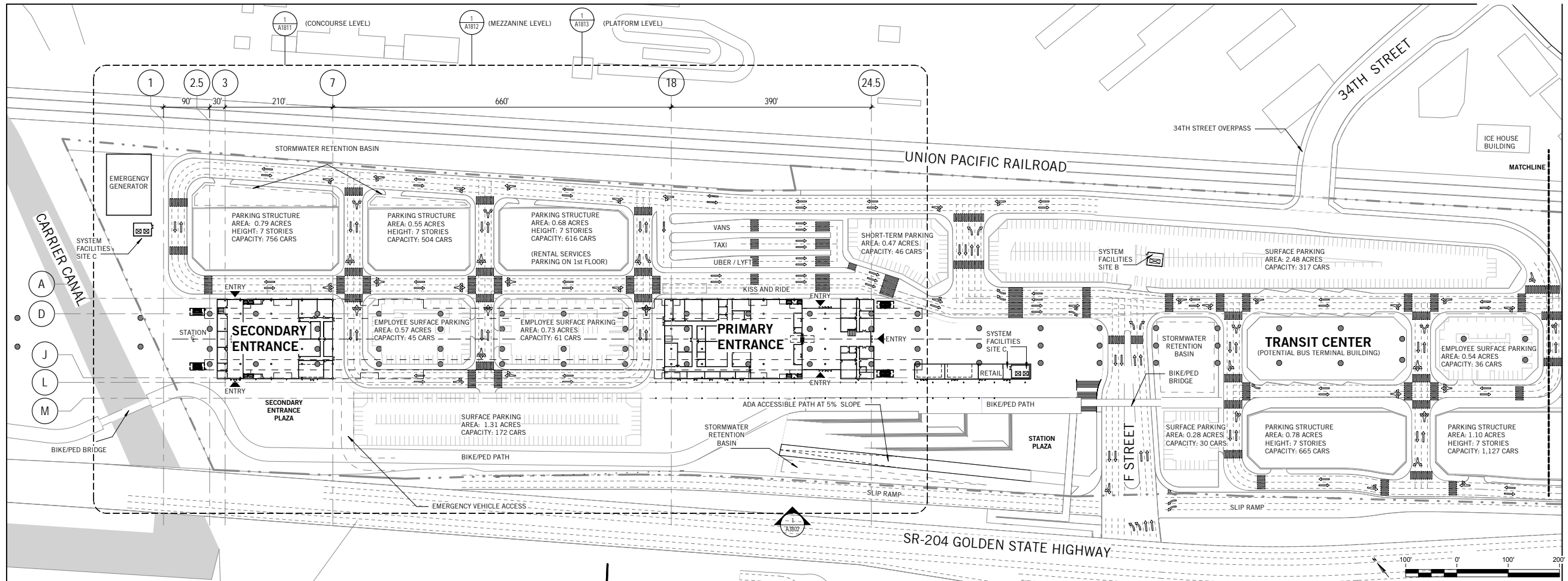
TYLIN INTERNATIONAL



CALIFORNIA  
HIGH-SPEED RAIL AUTHORITY

CALIFORNIA HIGH-SPEED TRAIN PROJECT  
FRESNO TO BAKERSFIELD  
  
LOCALLY GENERATED ALTERNATIVE  
  
BAKERSFIELD F STREET STATION  
SITE CONTEXT ROOF PLAN

CONTRACT NO.	HSR13-44
DRAWING NO.	A1801
SCALE	1" = 200'-0"
SHEET NO.	



1 STATION SITE PLAN  
1" = 100'-0"

SITE AREA & PARKING DATA

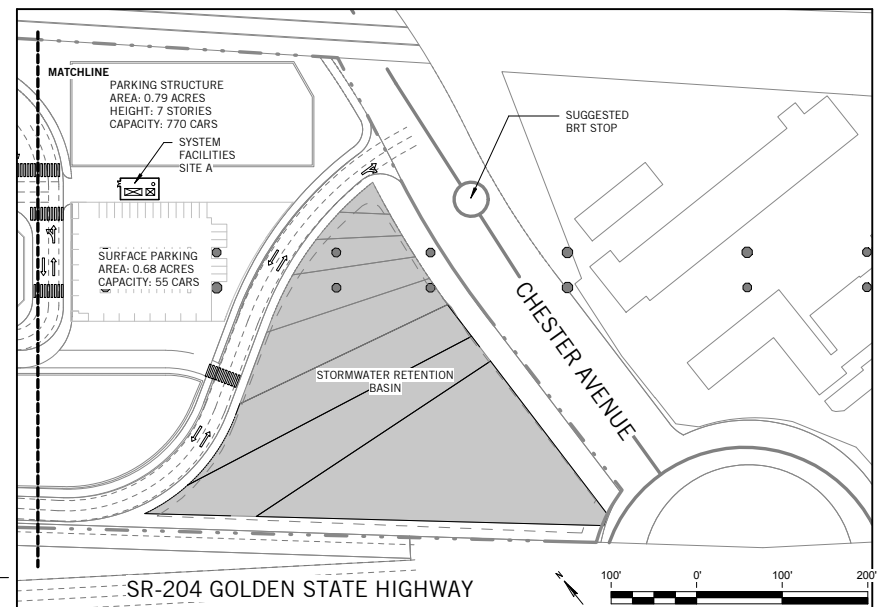
TOTAL STATION AREA: 46.25 ACRES

TOTAL PARKING AREA: 11.55 ACRES  
TOTAL PARKING CAPACITY: 5,200 SPACES

TOTAL SURFACE PARKING AREA: 6.86 ACRES  
TOTAL SURFACE PARKING CAPACITY: 762 SPACES

TOTAL PARKING STRUCTURE AREA: 4.69 ACRES  
TOTAL PARKING STRUCTURE CAPACITY: 4,438 SPACES

\*ALL PARKING STRUCTURES 7 STORIES WITH ONE LEVEL  
UNDERGROUND AND ONE LEVEL OF PARKING ON THE ROOF LEVEL



2 STATION SITE PLAN  
1" = 100'-0"

REV	DATE	BY	CHK	APP	DESCRIPTION

DESIGNED BY  
L. Giaramidaro  
DRAWN BY  
S. Ahmadzai  
CHECKED BY  
P. Cowcher  
IN CHARGE  
G. Silwal  
DATE  
10/28/16

PEPD RECORD SET  
DESIGN  
SUBMISSION  
  
NOT FOR  
CONSTRUCTION



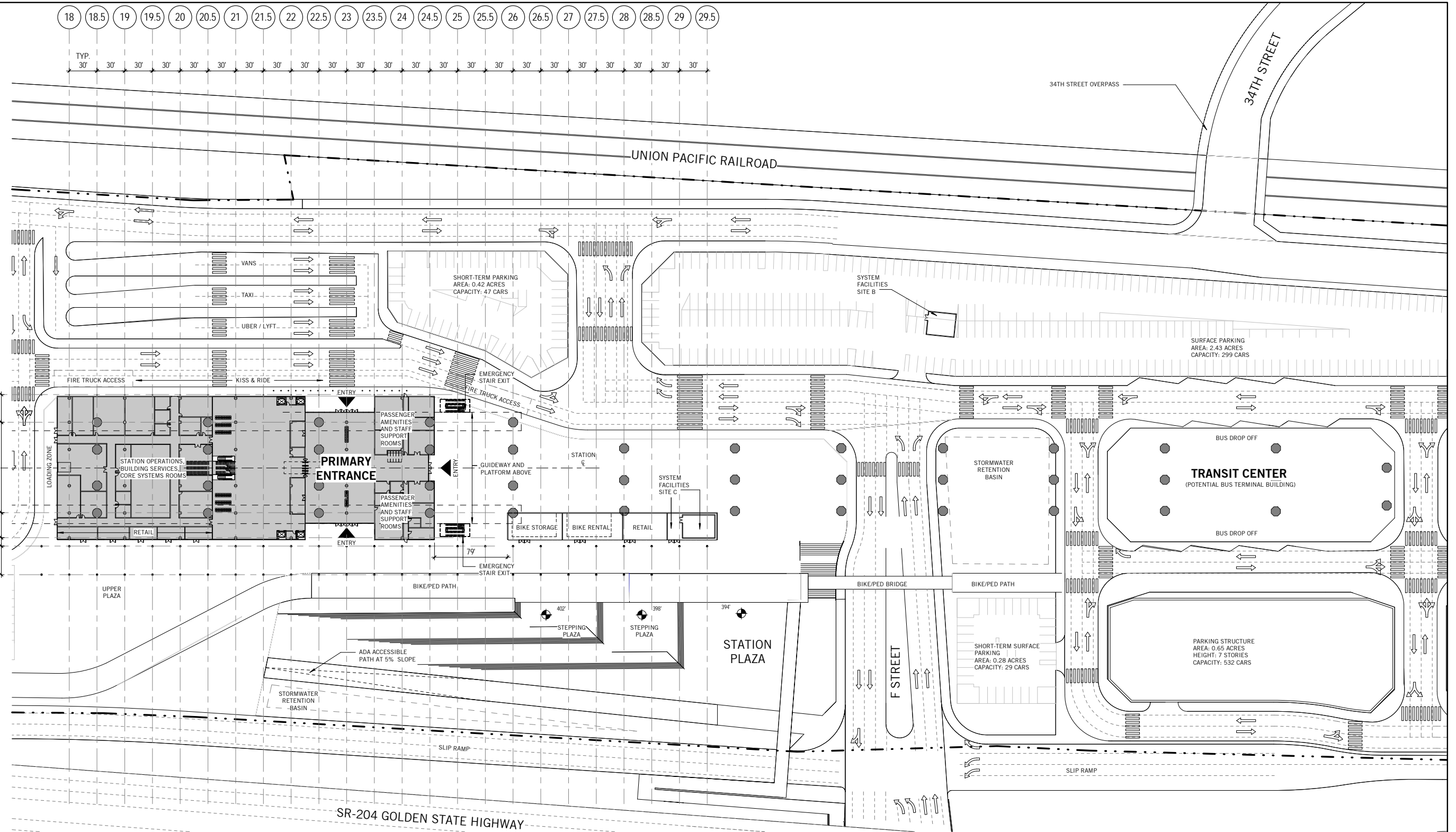
**CALIFORNIA HIGH-SPEED TRAIN PROJECT  
FRESNO TO BAKERSFIELD**  
  
LOCALLY GENERATED ALTERNATIVE  
  
BAKERSFIELD F STREET STATION  
**STATION SITE PLAN**

CONTRACT NO.  
HSR13-44  
DRAWING NO.  
A1802  
SCALE  
1" = 100'-0"  
SHEET NO.



c:\temp\491510.000\_HSR\_Bakersfield\_Stn\_giaramidaro.rvt

11/4/2016 3:34:36 PM



1 PLAZA + TRANSIT CENTER KEY PLAN  
1" = 50'-0"

REV	DATE	BY	CHK	APP	DESCRIPTION

DESIGNED BY L. Giaramidaro
DRAWN BY S. Ahmadzai
CHECKED BY 
IN CHARGE G. Silwal
DATE 10/28/16

PEPD RECORD SET  
DESIGN  
SUBMISSION  
  
NOT FOR  
CONSTRUCTION

TYLIN INTERNATIONAL



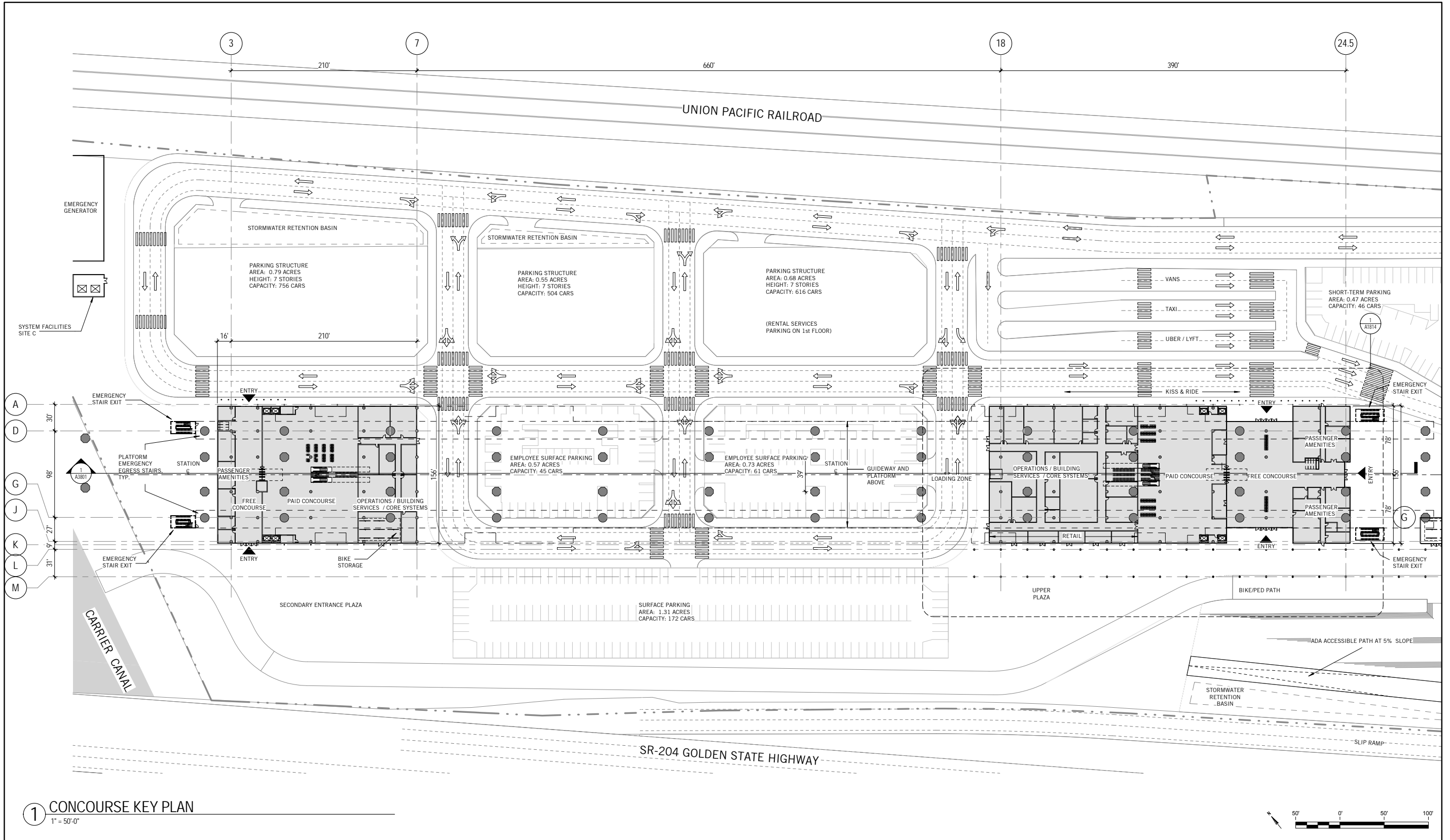
CALIFORNIA  
HIGH-SPEED RAIL AUTHORITY

CALIFORNIA HIGH-SPEED TRAIN PROJECT  
FRESNO TO BAKERSFIELD  
  
LOCALLY GENERATED ALTERNATIVE  
  
BAKERSFIELD F STREET STATION  
PLAZA AND TRANSIT CENTER KEY PLAN

CONTRACT NO.	HSR13-44
DRAWING NO.	A1810
SCALE	1" = 50'-0"
SHEET NO.	

c:\temp\491510.000\_HSR\_Bakersfield\_Stn\_giaramidaro.rvt

11/4/2016 3:34:52 PM



1 CONCOURSE KEY PLAN  
1" = 50'-0"

REV	DATE	BY	CHK	APP	DESCRIPTION

DESIGNED BY L. Giaramidaro
DRAWN BY S. Ahmadzai
CHECKED BY P. Cowcher
IN CHARGE G. Silwal
DATE 10/28/16

PEPD RECORD SET  
DESIGN  
SUBMISSION  
  
NOT FOR  
CONSTRUCTION

TYLIN INTERNATIONAL

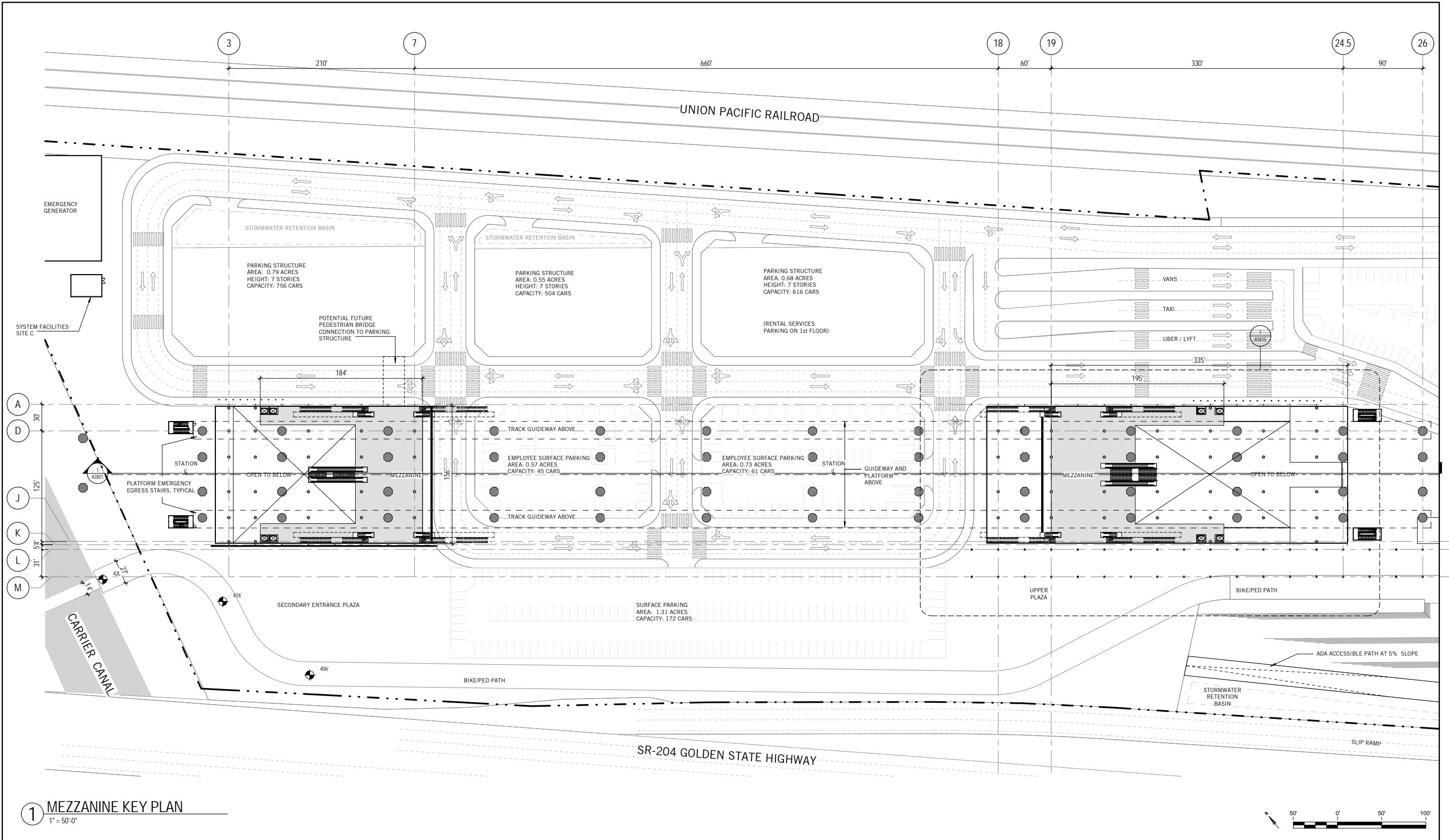


CALIFORNIA  
HIGH-SPEED RAIL AUTHORITY

CALIFORNIA HIGH-SPEED TRAIN PROJECT  
FRESNO TO BAKERSFIELD  
LOCALLY GENERATED ALTERNATIVE  
BAKERSFIELD F STREET STATION  
CONCOURSE KEY PLAN

CONTRACT NO.	HSR13-44
DRAWING NO.	A1811
SCALE	1" = 50'-0"
SHEET NO.	

c:\temp\491510.000\_HSR\_Bakersfield\_Stn\_giaramidaro.rvt 11/4/2016 3:34:59 PM



1 MEZZANINE KEY PLAN  
1" = 50'-0"

REV	DATE	BY	CHK	APP	DESCRIPTION

DESIGNED BY L. Giaramidaro
DRAWN BY S. Ahmadzai
CHECKED BY P. Cowcher
IN CHARGE G. Sitwal
DATE 10/28/16

PEPD RECORD SET  
DESIGN  
SUBMISSION  
  
NOT FOR  
CONSTRUCTION

TYLIN INTERNATIONAL



CALIFORNIA  
HIGH-SPEED RAIL AUTHORITY

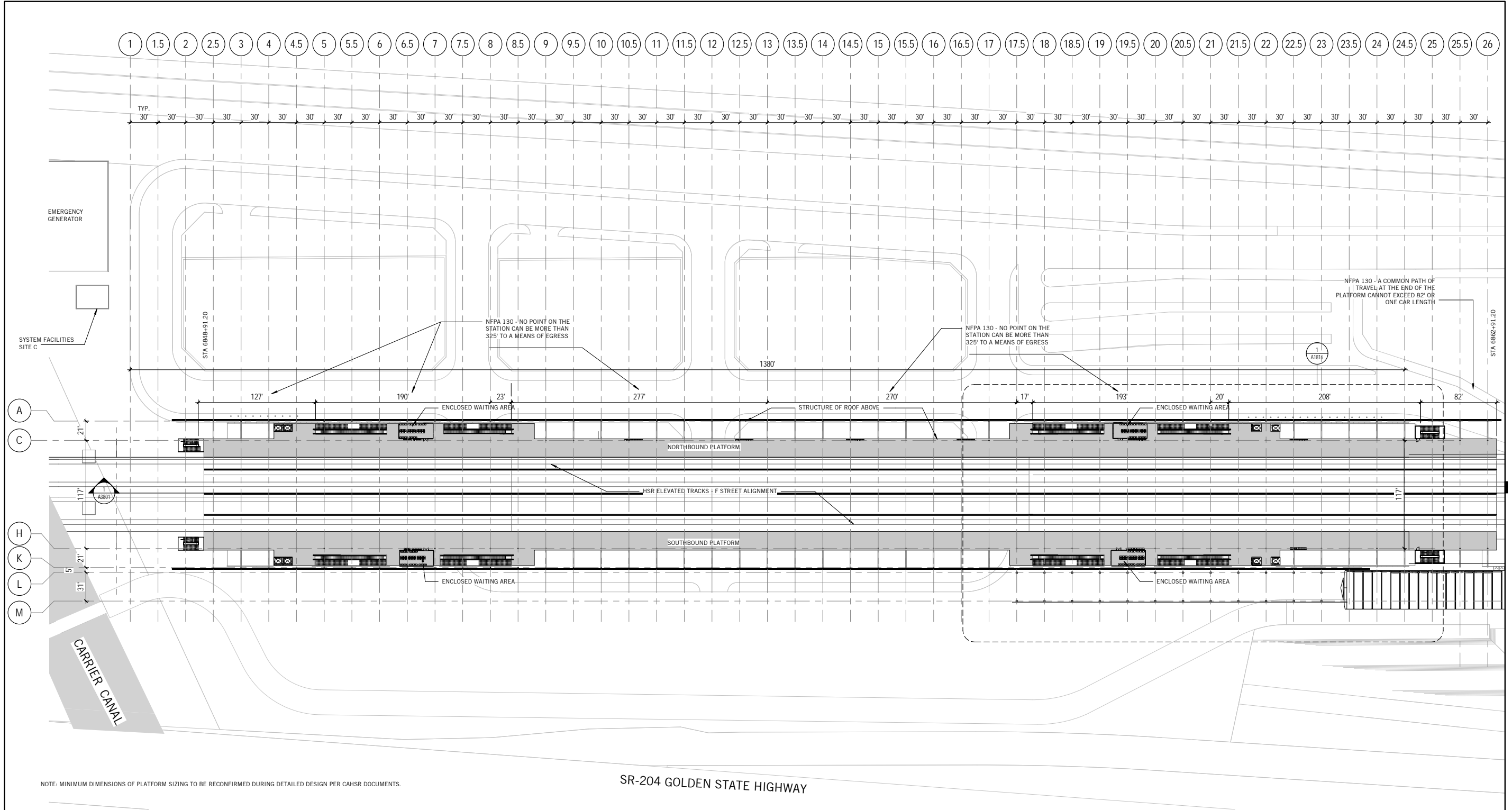
CALIFORNIA HIGH-SPEED TRAIN PROJECT  
FRESNO TO BAKERSFIELD  
LOCALLY GENERATED ALTERNATIVE  
BAKERSFIELD F STREET STATION  
MEZZANINE KEY PLAN

CONTRACT NO.	HSR13-44
DRAWING NO.	A1812
SCALE	1" = 50'-0"
SHEET NO.	

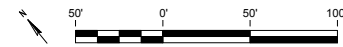


c:\temp\491510.000\_HSR\_Bakersfield\_Stn\_giaramidaro.rvt

11/4/2016 3:35:12 PM



1 PLATFORM LEVEL KEY PLAN  
1" = 50'-0"



REV	DATE	BY	CHK	APP	DESCRIPTION

DESIGNED BY  
L. Giaramidaro  
DRAWN BY  
S. Ahmadzai  
CHECKED BY  
P. Cowcher  
IN CHARGE  
G. Silwal  
DATE  
10/28/16

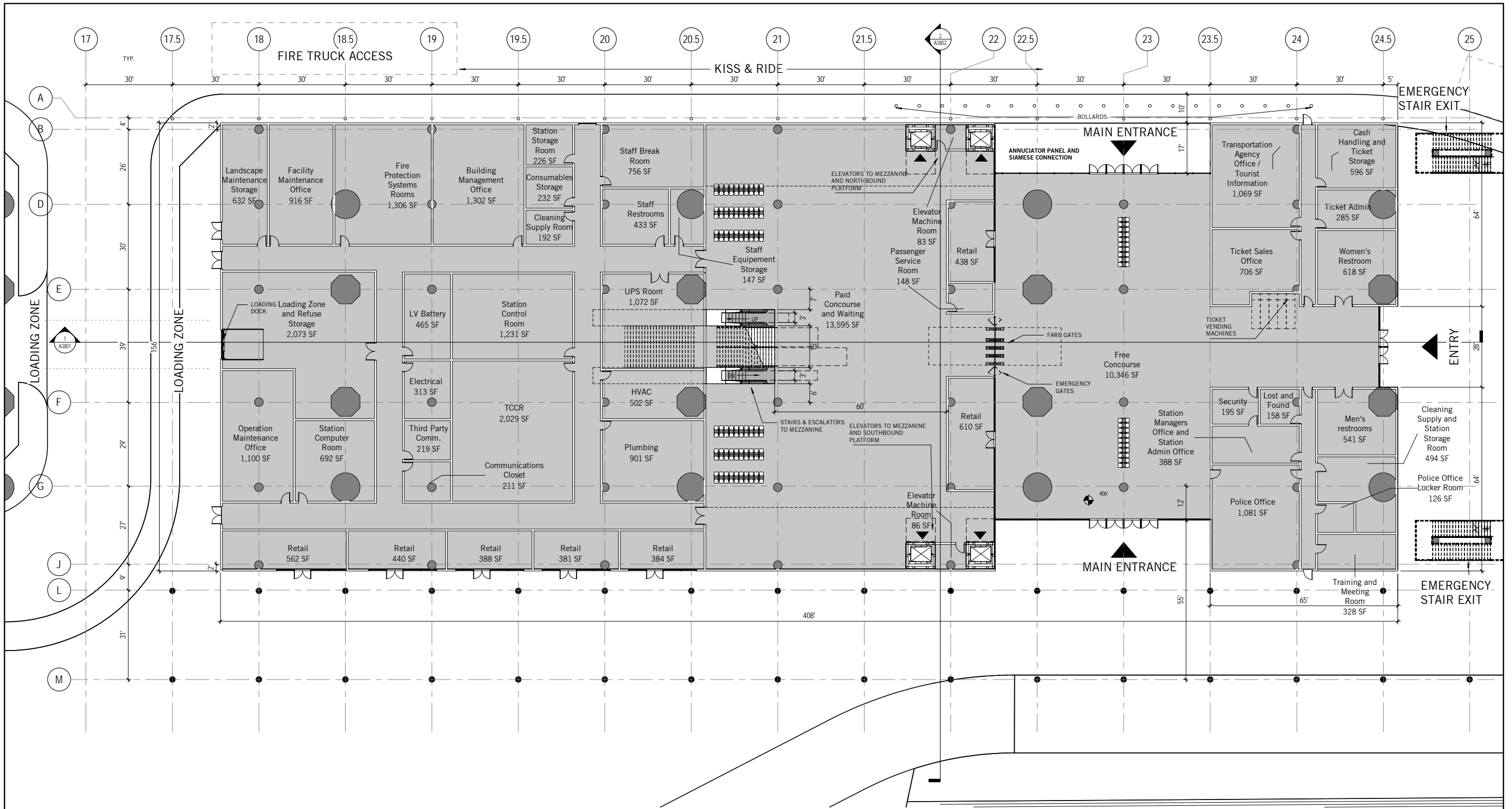
PEPD RECORD SET  
DESIGN  
SUBMISSION  
  
NOT FOR  
CONSTRUCTION

**CALIFORNIA HIGH-SPEED TRAIN PROJECT  
FRESNO TO BAKERSFIELD**  
  
LOCALLY GENERATED ALTERNATIVE  
  
BAKERSFIELD F STREET STATION  
**PLATFORM LEVEL KEY PLAN**

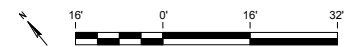
CONTRACT NO.	HSR13-44
DRAWING NO.	A1813
SCALE	1" = 50'-0"
SHEET NO.	

c:\temp\491510.000\_HSR\_Bakersfield\_Stn\_giaramidaro.rvt

11/4/2016 3:35:20 PM



1 ENLARGED CONCOURSE FLOOR PLAN -  
MAIN ENTRANCE  
1/16" = 1'-0"



						DESIGNED BY L. Giaramidaro
						DRAWN BY S. Ahmadzai
						CHECKED BY P. Cowcher
						IN CHARGE G. Silwal
REV	DATE	BY	CHK	APP	DESCRIPTION	DATE 10/28/16

PEPD RECORD SET  
DESIGN  
SUBMISSION  
  
NOT FOR  
CONSTRUCTION

TYLIN INTERNATIONAL



CALIFORNIA HIGH-SPEED TRAIN PROJECT  
FRESNO TO BAKERSFIELD  
LOCALLY GENERATED ALTERNATIVE  
BAKERSFIELD F STREET STATION  
CONCOURSE FLOOR PLAN-MAIN ENTRANCE

c:\temp\491510.000\_HSR\_Bakersfield\_Stn\_giaramidaro.rvt

11/4/2016 3:35:27 PM

ENLARGED MEZZANINE FLOOR PLAN -  
MAIN ENTRANCE

1  
1/16" = 1'-0"

REV	DATE	BY	CHK	APP	DESCRIPTION

DESIGNED BY L. Giaramidaro
DRAWN BY S. Ahmadzai
CHECKED BY P. Cowcher
IN CHARGE G. Silwal
DATE 10/28/16

PEPD RECORD SET  
DESIGN  
SUBMISSION  
  
NOT FOR  
CONSTRUCTION

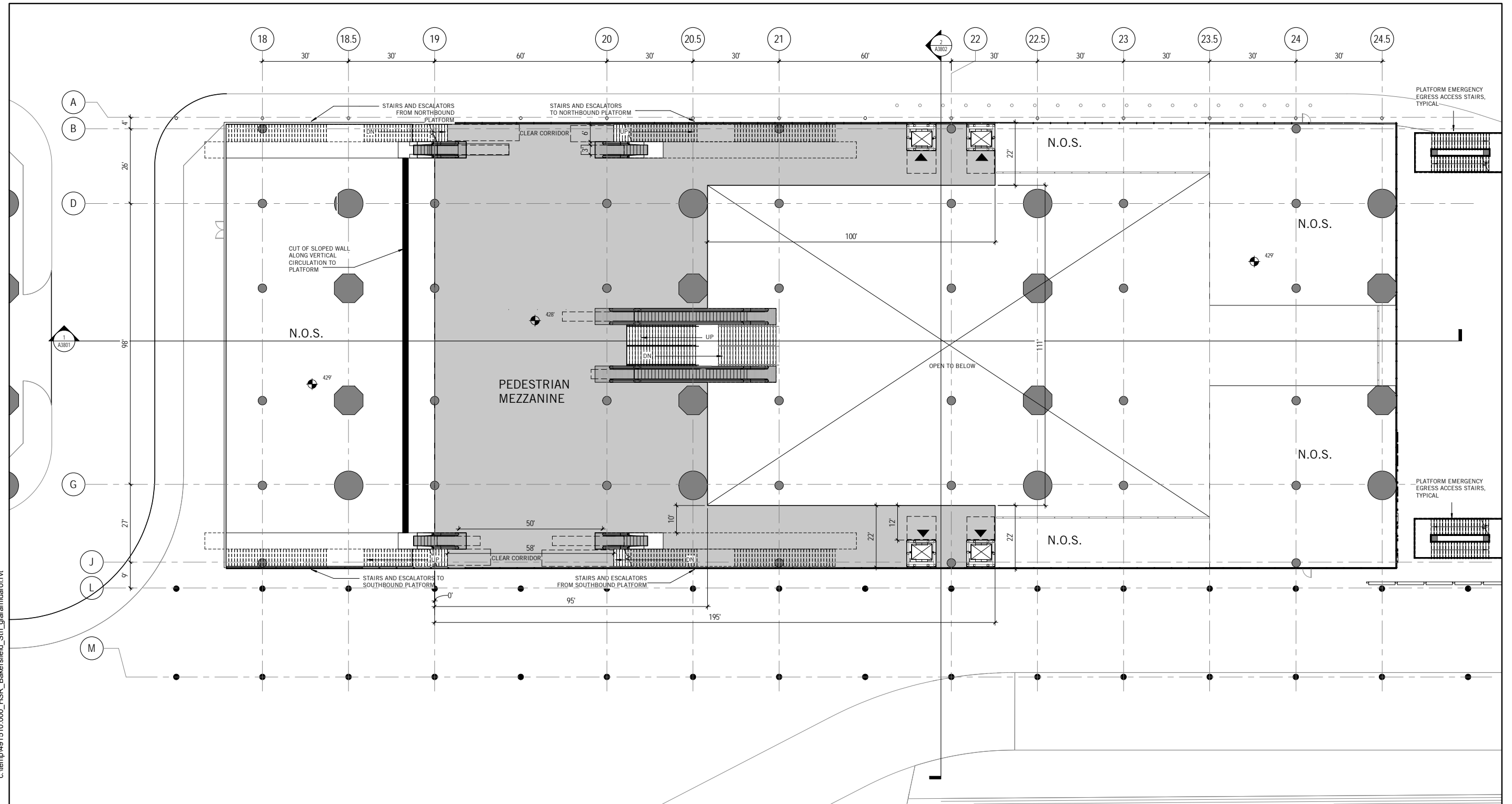
TYLIN INTERNATIONAL



CALIFORNIA  
HIGH-SPEED RAIL AUTHORITY

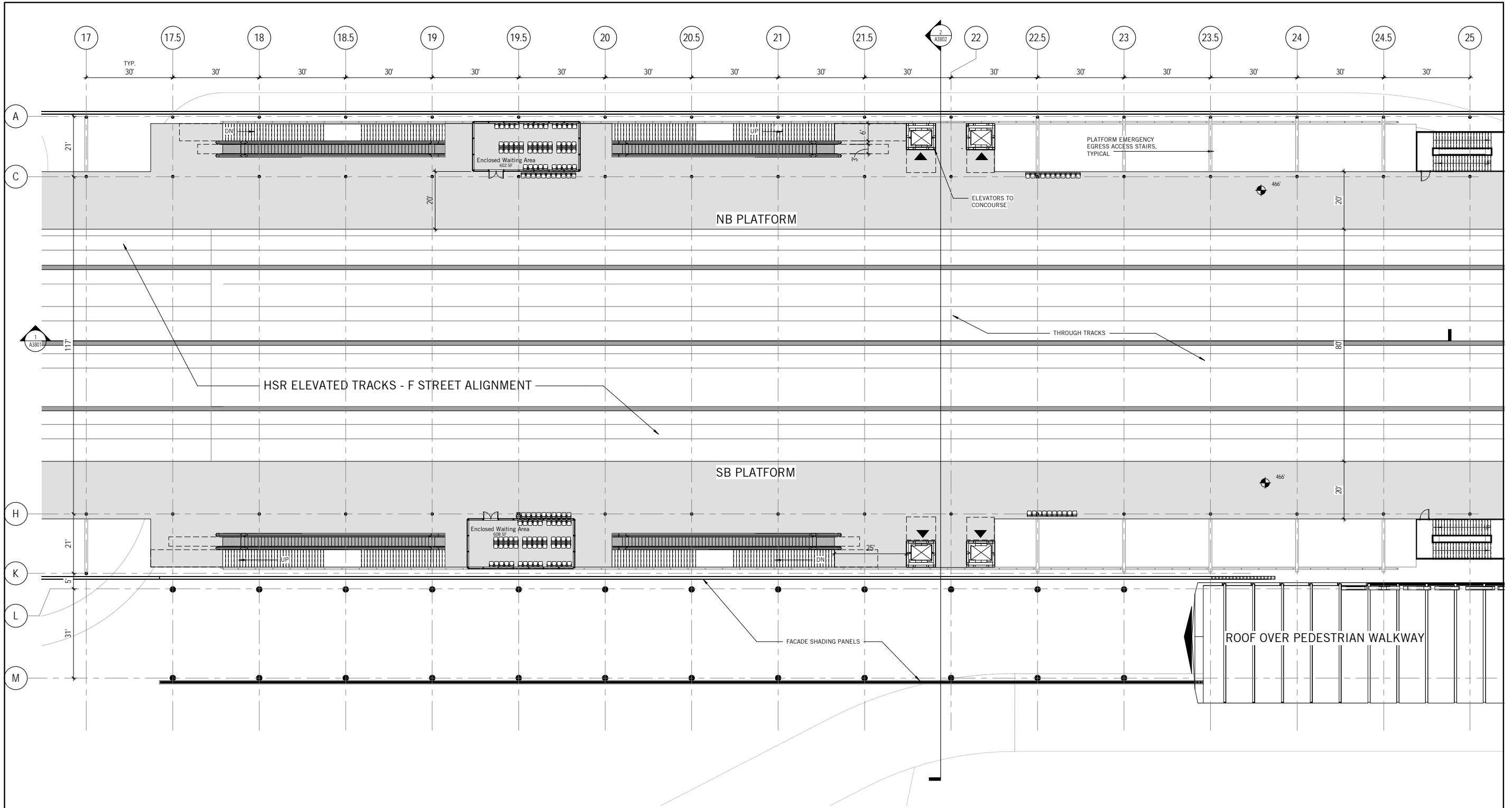
CALIFORNIA HIGH-SPEED TRAIN PROJECT  
FRESNO TO BAKERSFIELD  
LOCALLY GENERATED ALTERNATIVE  
BAKERSFIELD F STREET STATION  
MEZZANINE FLOOR PLAN-MAIN ENTRANCE

CONTRACT NO.	HSR13-44
DRAWING NO.	A1815
SCALE	1/16" = 1'-0"
SHEET NO.	

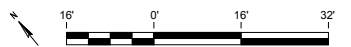


c:\temp\491510.000\_HSR\_Bakersfield\_Stn\_giaramidaro.rvt

11/4/2016 3:35:35 PM



1 ENLARGED PLATFORM - MAIN ENTRANCE  
1/16" = 1'-0"



REV	DATE	BY	CHK	APP	DESCRIPTION

DESIGNED BY  
L. Giaramidaro  
DRAWN BY  
S. Ahmadzai  
CHECKED BY  
P. Cowcher  
IN CHARGE  
G. Silwal  
DATE  
10/28/16

PEPD RECORD SET  
DESIGN  
SUBMISSION  
  
NOT FOR  
CONSTRUCTION

TYLIN INTERNATIONAL



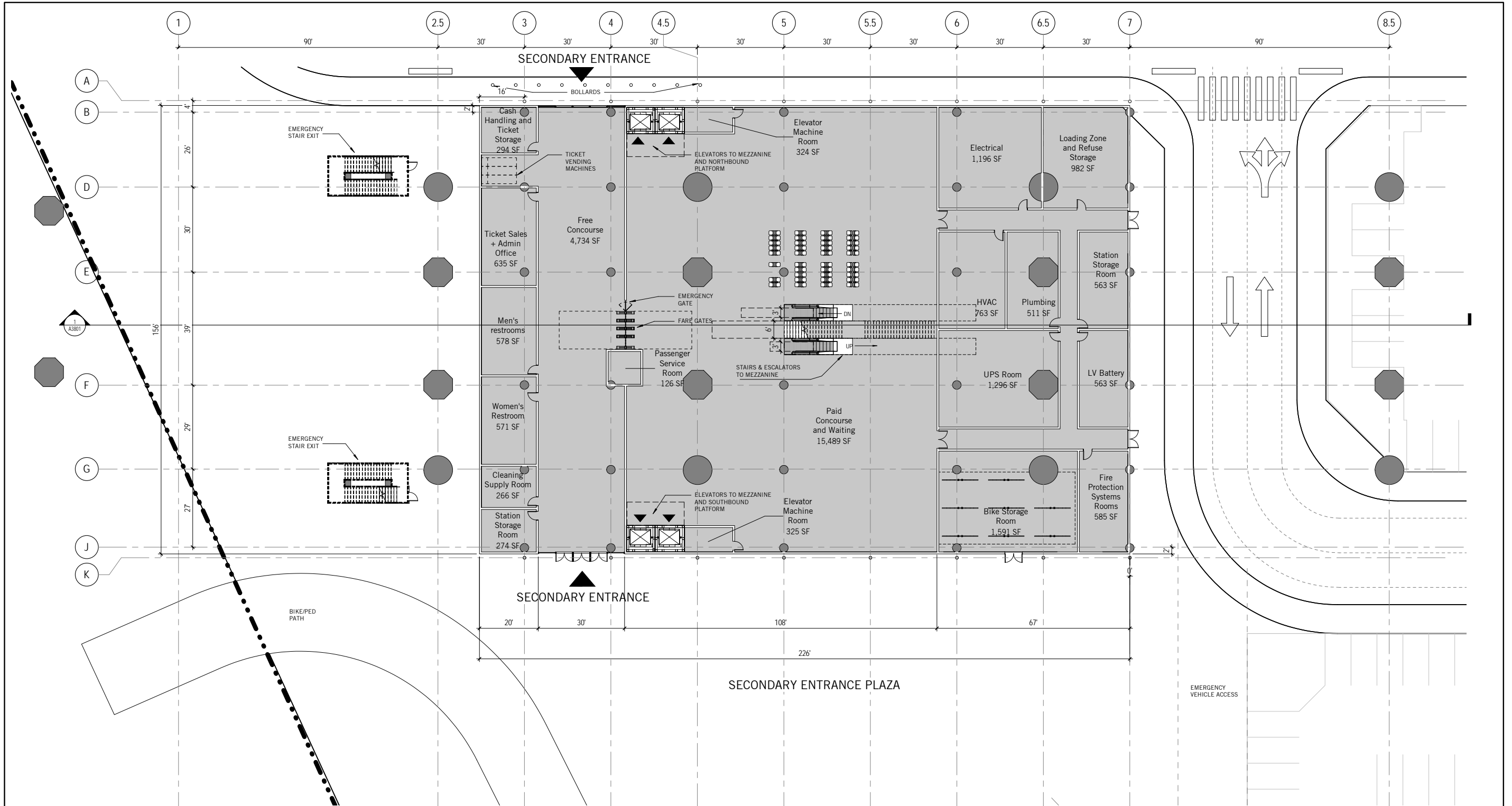
CALIFORNIA  
HIGH-SPEED RAIL AUTHORITY

CALIFORNIA HIGH-SPEED TRAIN PROJECT  
FRESNO TO BAKERSFIELD  
LOCALLY GENERATED ALTERNATIVE  
BAKERSFIELD F STREET STATION  
PLATFORM FLOOR PLAN-MAIN ENTRANCE

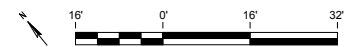
CONTRACT NO.  
HSR13-44  
DRAWING NO.  
A1816  
SCALE  
1/16" = 1'-0"  
SHEET NO.

c:\temp\491510.000\_HSR\_Bakersfield\_Stn\_giaramidaro.rvt

11/4/2016 3:35:43 PM



1 ENLARGED CONCOURSE FLOOR PLAN -  
SECONDARY ENTRANCE  
1/16" = 1'-0"



REV	DATE	BY	CHK	APP	DESCRIPTION

DESIGNED BY L. Giaramidaro
DRAWN BY S. Ahmadzai
CHECKED BY P. Cowcher
IN CHARGE G. Silwal
DATE 10/28/16

PEPD RECORD SET  
DESIGN  
SUBMISSION  
  
NOT FOR  
CONSTRUCTION



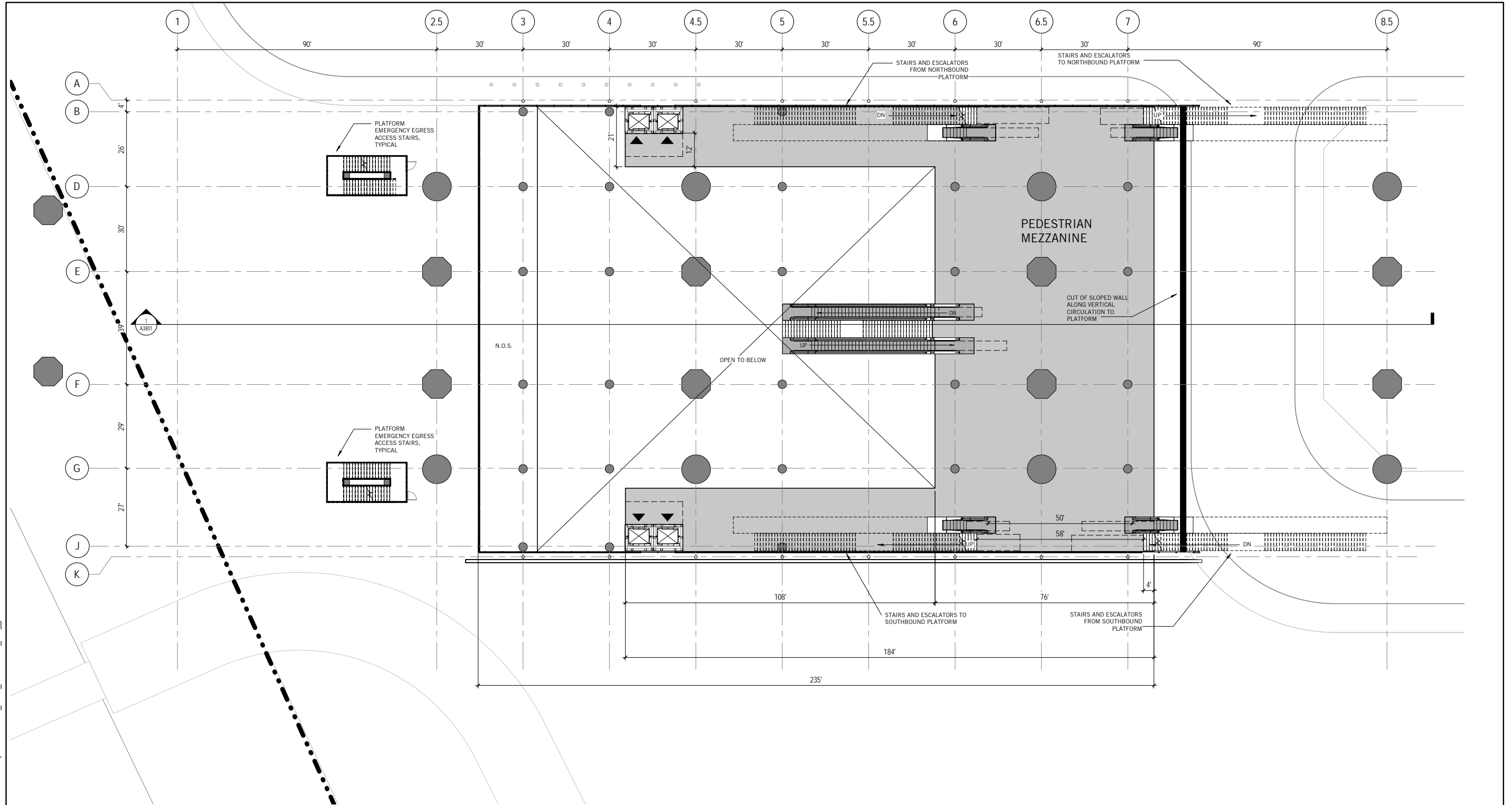
**CALIFORNIA HIGH-SPEED TRAIN PROJECT  
FRESNO TO BAKERSFIELD**  
  
LOCALLY GENERATED ALTERNATIVE  
  
BAKERSFIELD F STREET STATION  
**CONCOURSE FLOOR PLAN-SECONDARY ENTRANCE**

CONTRACT NO.	HSR13-44
DRAWING NO.	A1817
SCALE	1/16" = 1'-0"
SHEET NO.	

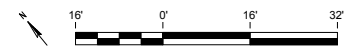


c:\temp\491510.000\_HSR\_Bakersfield\_Stn\_giaramidaro.rvt

11/4/2016 3:35:45 PM



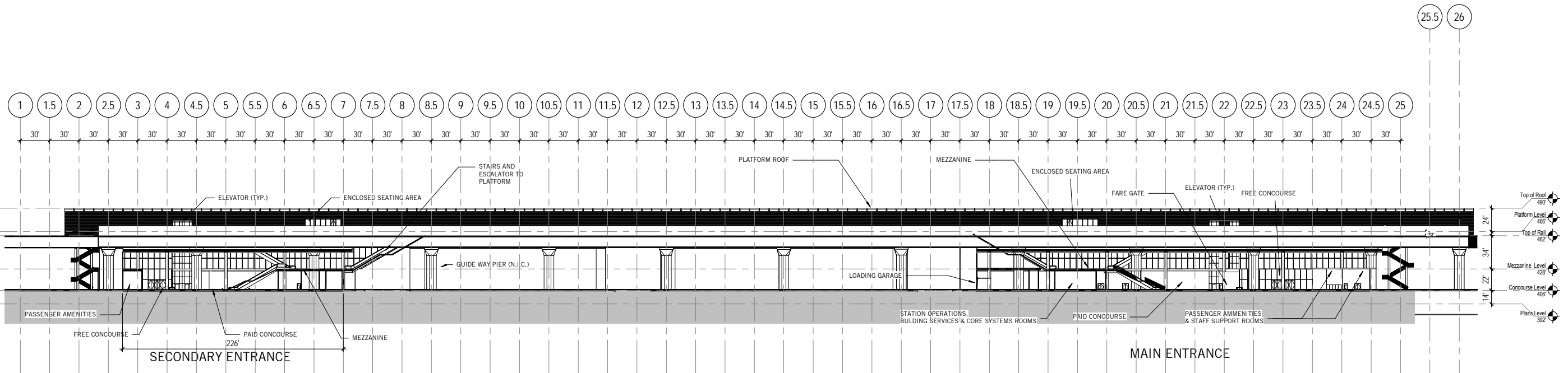
1 ENLARGED MEZZANINE FLOOR PLAN -  
SECONDARY ENTRANCE  
1/16" = 1'-0"



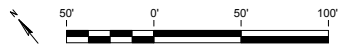
						DESIGNED BY L. Giaramidaro	PEPD RECORD SET DESIGN SUBMISSION - NOT FOR CONSTRUCTION	TYLIN INTERNATIONAL		CALIFORNIA HIGH-SPEED RAIL AUTHORITY	CALIFORNIA HIGH-SPEED TRAIN PROJECT FRESNO TO BAKERSFIELD  LOCALLY GENERATED ALTERNATIVE  BAKERSFIELD F STREET STATION MEZZANINE FLOOR PLAN-SECONDARY ENTRANCE	CONTRACT NO. HSR13-44
						DRAWN BY S. Ahmadzai						DRAWING NO. A1818
						CHECKED BY P. Cowcher						SCALE 1/16" = 1'-0"
						IN CHARGE G. Silwal						SHEET NO.
REV	DATE	BY	CHK	APP	DESCRIPTION	DATE 10/28/16						

c:\temp\491510.000\_HSR\_Bakersfield\_Stn\_giaramidaro.rvt

11/4/2016 3:35:47 PM



1 LONGITUDINAL SECTION  
1" = 50'-0"



REV	DATE	BY	CHK	APP	DESCRIPTION

DESIGNED BY L. Giaramidaro
DRAWN BY S. Ahmadzai
CHECKED BY P. Cowcher
IN CHARGE G. Silwal
DATE 10/28/16

PEPD RECORD SET  
DESIGN  
SUBMISSION  
  
NOT FOR  
CONSTRUCTION

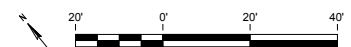
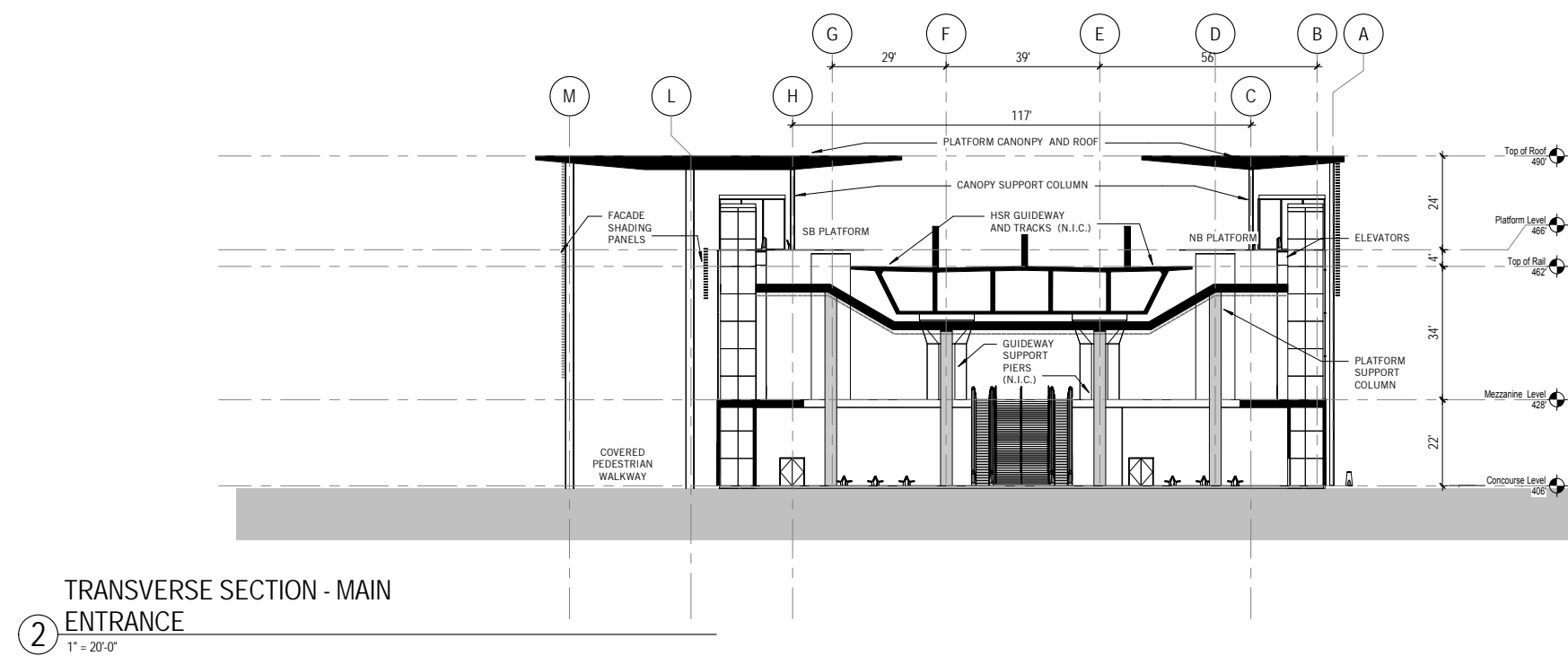
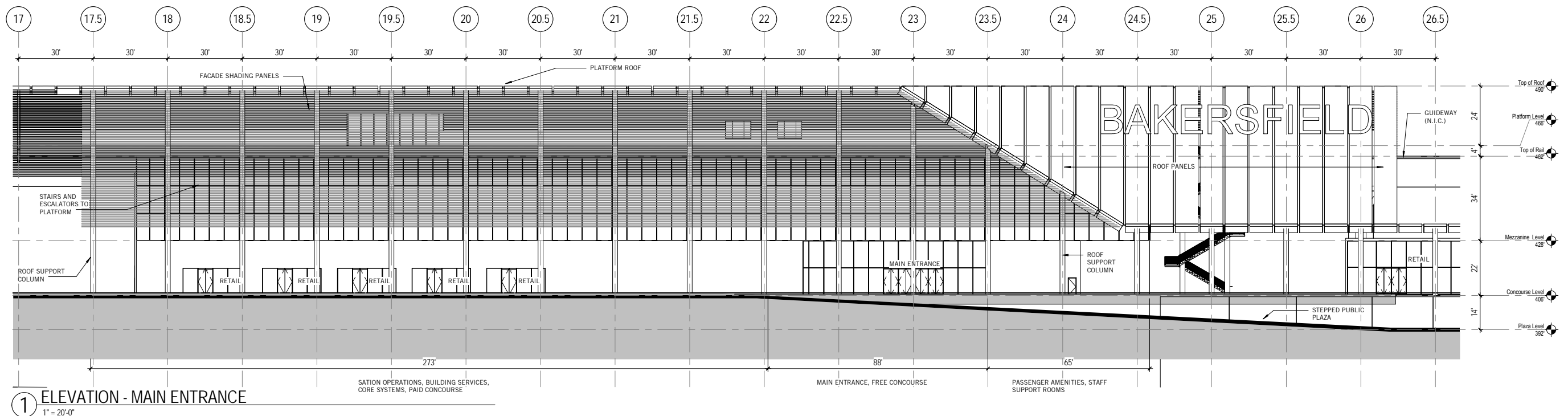
TYLIN INTERNATIONAL



CALIFORNIA  
HIGH-SPEED RAIL AUTHORITY


CALIFORNIA HIGH-SPEED TRAIN PROJECT  
FRESNO TO BAKERSFIELD  
  
LOCALLY GENERATED ALTERNATIVE  
  
BAKERSFIELD F STREET STATION  
LONGITUDINAL SECTION

CONTRACT NO.	HSR13-44
DRAWING NO.	A3801
SCALE	1" = 50'-0"
SHEET NO.	



c:\temp\491510.000\_HSR\_Bakersfield\_Stn\_giaramidaro.rvt

11/4/2016 3:35:51 PM

DESIGNED BY L. Giaramidaro	PEPD RECORD SET DESIGN SUBMISSION  NOT FOR CONSTRUCTION	TYLIN INTERNATIONAL	 CALIFORNIA HIGH-SPEED RAIL AUTHORITY	<b>CALIFORNIA HIGH-SPEED TRAIN PROJECT FRESNO TO BAKERSFIELD</b>  LOCALLY GENERATED ALTERNATIVE  BAKERSFIELD F STREET STATION <b>BUILDING SECTION &amp; ELEVATION</b>	CONTRACT NO. HSR13-44  DRAWING NO. A3802  SCALE 1" = 20'-0"  SHEET NO.
DRAWN BY S. Ahmadzai					
CHECKED BY P. Cowcher					
IN CHARGE G. Silwal					
DATE 10/28/16					
REV	DATE	BY	CHK	APP	DESCRIPTION

c:\temp\491510.000\_HSR\_Bakersfield\_Stn\_giaramidaro.rvt

11/4/2016 3:35:51 PM

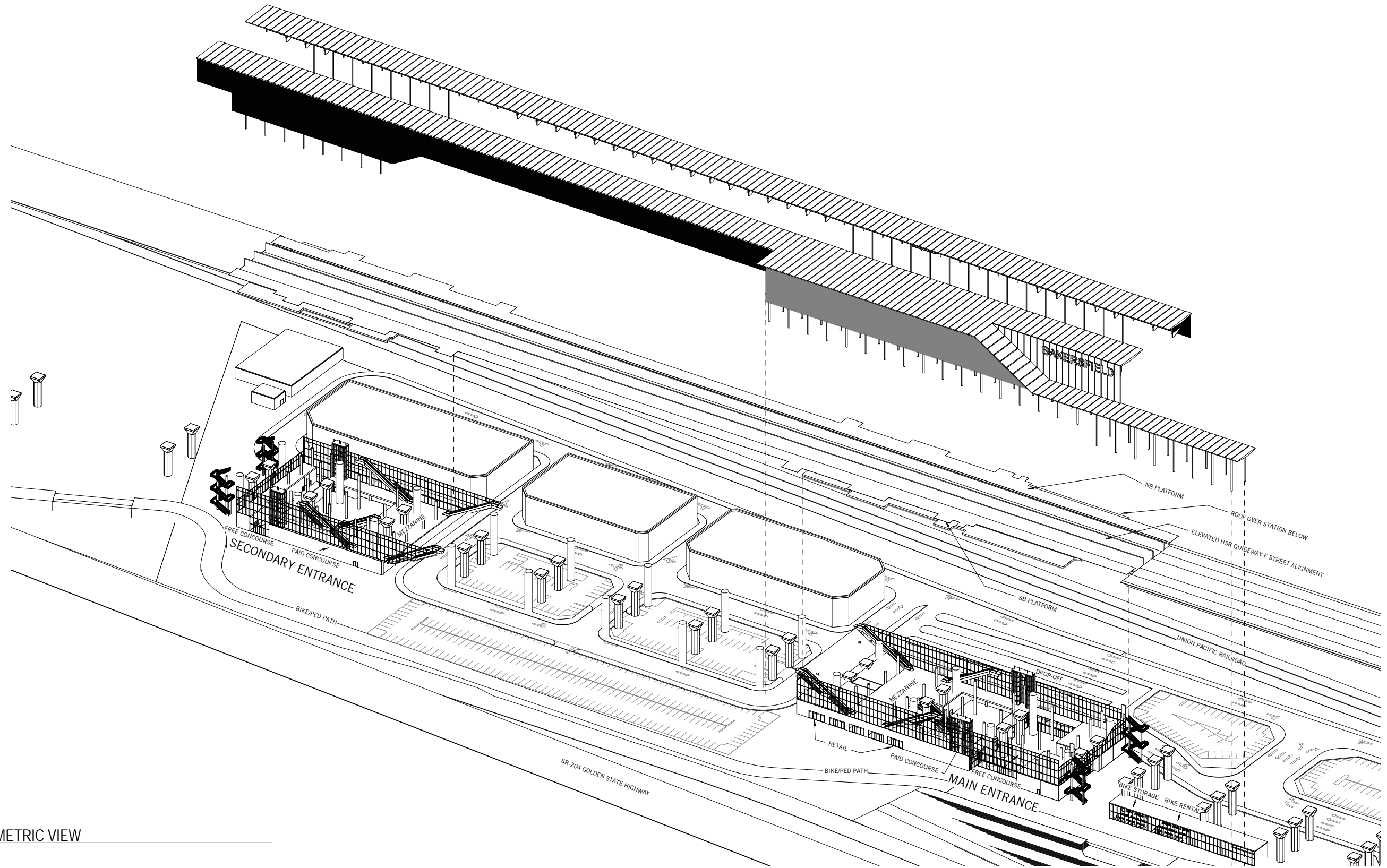
ROOM SCHEDULE				
Room	Area	Required Area	Level	Reference
01-Detached				
Retail	2,631 SF	n/a	-1-Plaza Level	Actual dimension will be determined during station design. Value is approximate
Retail	2,914 SF	n/a	-1-Plaza Level	Actual dimension will be determined during station design. Value is approximate
Retail	2,137 SF	n/a	-1-Plaza Level	Actual dimension will be determined during station design. Value is approximate
Retail	2,404 SF	n/a	-1-Plaza Level	Actual dimension will be determined during station design. Value is approximate
Retail	4,000 SF	n/a	-1-Plaza Level	Actual dimension will be determined during station design. Value is approximate
Retail Storage	1,669 SF	n/a	-1-Plaza Level	Actual dimension will be determined during station design. Value is approximate
Retail Storage	1,849 SF	n/a	-1-Plaza Level	Actual dimension will be determined during station design. Value is approximate
Retail Storage	1,356 SF	n/a	-1-Plaza Level	Actual dimension will be determined during station design. Value is approximate
Retail Storage	1,525 SF	n/a	-1-Plaza Level	Actual dimension will be determined during station design. Value is approximate
Retail Storage	2,483 SF	n/a	-1-Plaza Level	Actual dimension will be determined during station design. Value is approximate
Bike Storage Room	1,647 SF	n/a	Concourse Level	Actual dimension will be determined during station design. Value is approximate
Bike Storage Room	1,862 SF	n/a	Concourse Level	Actual dimension will be determined during station design. Value is approximate
Emergency Generator	10,284 SF	10000	Concourse Level	3.6.6.2
Retail	1,357 SF	n/a	Concourse Level	Actual dimension will be determined during station design. Value is approximate
02-Main entrance				
Building Management Office	1,302 SF	1,200	Concourse Level	3.6.6.3 Specific to Building Design
Cash Handling and Ticket Storage	596 SF	260	Concourse Level	3.6.2.4
Cleaning Supply and Station Storage Room	494 SF	150	Concourse Level	3.6.4.3
Cleaning Supply Room	192 SF	80	Concourse Level	3.6.4.2
Communications Closet	211 SF	n/a	Concourse Level	3.6.7.1 Coordinate with Communications and Operations Requirements
Consumables Storage	232 SF	60	Concourse Level	3.6.4.5
Electrical	313 SF		Concourse Level	Actual dimension will be determined during station design. Value is approximate
Elevator Machine Room	83 SF	n/a	Concourse Level	Actual dimension will be determined during station design. Value is approximate
Elevator Machine Room	86 SF	n/a	Concourse Level	Actual dimension will be determined during station design. Value is approximate
Facility Maintenance Office	916 SF	330	Concourse Level	3.6.3.10
Fire Protection Systems Rooms	1,306 SF	n/a	Concourse Level	3.6.6.3 Actual dimension will be determined during station design. Value is approximate
Free Concourse	10,346 SF	13,405	Concourse Level	Table 14-3*
HVAC	502 SF	n/a	Concourse Level	Actual dimension will be determined during station design. Value is approximate
Landscape Maintenance Storage	632 SF	100	Concourse Level	3.6.4.3
Loading Zone and Refuse Storage	2,073 SF	2,000	Concourse Level	3.6.6.4*
Lost and Found	158 SF	80	Concourse Level	3.6.2.5
LV Battery	465 SF	200	Concourse Level	3.6.6.2
Men's restrooms	541 SF	n/a	Concourse Level	Based on California Building Code
Operation Maintenance Office	1,100 SF	1,100	Concourse Level	3.6.3.10
Paid Concourse and Waiting	13,595 SF	11,222	Concourse Level	Table 14-3*
Passenger Service Room	148 SF	100	Concourse Level	3.8.1.2
Plumbing	901 SF	n/a	Concourse Level	Actual dimension will be determined during station design. Value is approximate
Police Office	1,081 SF	500	Concourse Level	3.6.2.6. Suggested to be larger
Police Office Locker Room	126 SF	80	Concourse Level	3.6.4.2
Retail	562 SF	n/a	Concourse Level	Actual dimension will be determined during station design. Value is approximate
Retail	440 SF	n/a	Concourse Level	Actual dimension will be determined during station design. Value is approximate
Retail	388 SF	n/a	Concourse Level	Actual dimension will be determined during station design. Value is approximate
Retail	381 SF	n/a	Concourse Level	Actual dimension will be determined during station design. Value is approximate
Retail	384 SF	n/a	Concourse Level	Actual dimension will be determined during station design. Value is approximate
Retail	610 SF	n/a	Concourse Level	Actual dimension will be determined during station design. Value is approximate
Retail	438 SF	n/a	Concourse Level	Actual dimension will be determined during station design. Value is approximate
Security	195 SF	160	Concourse Level	3.6.3.9
Staff Break Room	756 SF	200	Concourse Level	3.6.3.12
Staff Equipment Storage	147 SF	60	Concourse Level	3.6.4.5
Staff Restrooms	433 SF	n/a	Concourse Level	3.6.3.14 Based on California Building Code
Station Computer Room	692 SF	500	Concourse Level	3.6.3.6
Station Control Room	1,231 SF	1,100	Concourse Level	3.6.3.5
Station Managers Office and Station Admin Office	388 SF	270	Concourse Level	3.6.3.3
Station Storage Room	226 SF	150	Concourse Level	3.6.4.3
TCCR	2,029 SF	1,915	Concourse Level	3.6.7.1 Coordinate with Communications and Operations Requirements
Third Party Comm.	219 SF	130	Concourse Level	3.6.7.1 Coordinate with Communications and Operations Requirements
Ticket Admin	285 SF	160	Concourse Level	3.5.3.7
Ticket Sales Office	706 SF	375	Concourse Level	Based on Population
Training and Meeting Room	328 SF	200	Concourse Level	3.6.3.4
Transportation Agency Office / Tourist Information	1,069 SF	n/a	Concourse Level	Suggested
UPS Room	1,072 SF	900	Concourse Level	3.6.6.2
Women's Restroom	618 SF	n/a	Concourse Level	3.6.3.14 Based on California Building Code
Paid Concourse and Waiting	17,252 SF	11,222	Mezzanine Level	Table 14-3*

ROOM SCHEDULE				
Room	Area	Required Area	Level	Reference
03-Secondary entrance				
Bike Storage Room	1,591 SF	n/a	Concourse Level	Actual dimension will be determined during station design. Value is approximate
Cash Handling and Ticket Storage	294 SF	260	Concourse Level	3.6.2.4
Cleaning Supply Room	266 SF	80	Concourse Level	3.6.4.2
Electrical	1,196 SF	n/a	Concourse Level	Actual dimension will be determined during station design. Value is approximate
Elevator Machine Room	324 SF	n/a	Concourse Level	Actual dimension will be determined during station design. Value is approximate
Elevator Machine Room	325 SF	n/a	Concourse Level	Actual dimension will be determined during station design. Value is approximate
Fire Protection Systems Rooms	585 SF	n/a	Concourse Level	Actual dimension will be determined during station design. Value is approximate
Free Concourse	4,734 SF	13,405	Concourse Level	Table 14-3*
HVAC	763 SF	n/a	Concourse Level	Actual dimension will be determined during station design. Value is approximate
Loading Zone and Refuse Storage	982 SF	n/a	Concourse Level	3.6.6.4*
LV Battery	563 SF	200	Concourse Level	3.6.6.2
Men's restrooms	578 SF	n/a	Concourse Level	Based on California Building Code
Paid Concourse and Waiting	15,489 SF	11,222	Concourse Level	Table 14-3*
Passenger Service Room	126 SF	100	Concourse Level	3.8.1.2
Plumbing	511 SF	n/a	Concourse Level	Actual dimension will be determined during station design. Value is approximate
Station Storage Room	563 SF	150	Concourse Level	3.6.4.3
Station Storage Room	274 SF	150	Concourse Level	3.6.4.3
Ticket Sales + Admin Office	635 SF	375	Concourse Level	Based on Population
UPS Room	1,296 SF	900	Concourse Level	3.6.6.2
Women's Restroom	571 SF	n/a	Concourse Level	Based on California Building Code
Paid Concourse and Waiting	15,515 SF	11,222	Mezzanine Level	Table 14-3*
04-Platform				
Enclosed Waiting Area	608 SF	n/a	Platform Level	Table 3-10
Enclosed Waiting Area	602 SF	n/a	Platform Level	Table 3-10
Enclosed Waiting Area	600 SF	n/a	Platform Level	Table 3-10
Enclosed Waiting Area	611 SF	n/a	Platform Level	Table 3-10

\*Area requirements are met when additively considering the Main Entrance area and the Secondary Entrance area

Ridership number used: 9,200 daily riders.  
Room square footages above do account for columns.

						DESIGNED BY L. Giaramidaro	PEPD RECORD SET DESIGN SUBMISSION - NOT FOR CONSTRUCTION	TYLININTERNATIONAL		CALIFORNIA HIGH-SPEED TRAIN PROJECT FRESNO TO BAKERSFIELD  LOCALLY GENERATE ALTERNATIVE  BAKERSFIELD F STREET STATION ROOM SCHEDULE		CONTRACT NO. HSR13-44
						DRAWN BY S. Ahmadzai						DRAWING NO. A6801
						CHECKED BY P. Cowcher						SCALE N/A
						IN CHARGE G. Silwal						SHEET NO.
REV	DATE	BY	CHK	APP	DESCRIPTION	DATE 10/28/16						



1 AXONOMETRIC VIEW

c:\temp\491510.000\_HSR\_Bakersfield\_Stn\_giaramidaro.rvt

11/4/2016 3:36:06 PM

REV	DATE	BY	CHK	APP	DESCRIPTION

DESIGNED BY L. Giaramidaro
DRAWN BY S. Ahmadzai
CHECKED BY P. Cowcher
IN CHARGE G. Silwal
DATE 10/28/16

PEPD RECORD SET  
DESIGN  
SUBMISSION  
  
NOT FOR  
CONSTRUCTION

TYLIN INTERNATIONAL



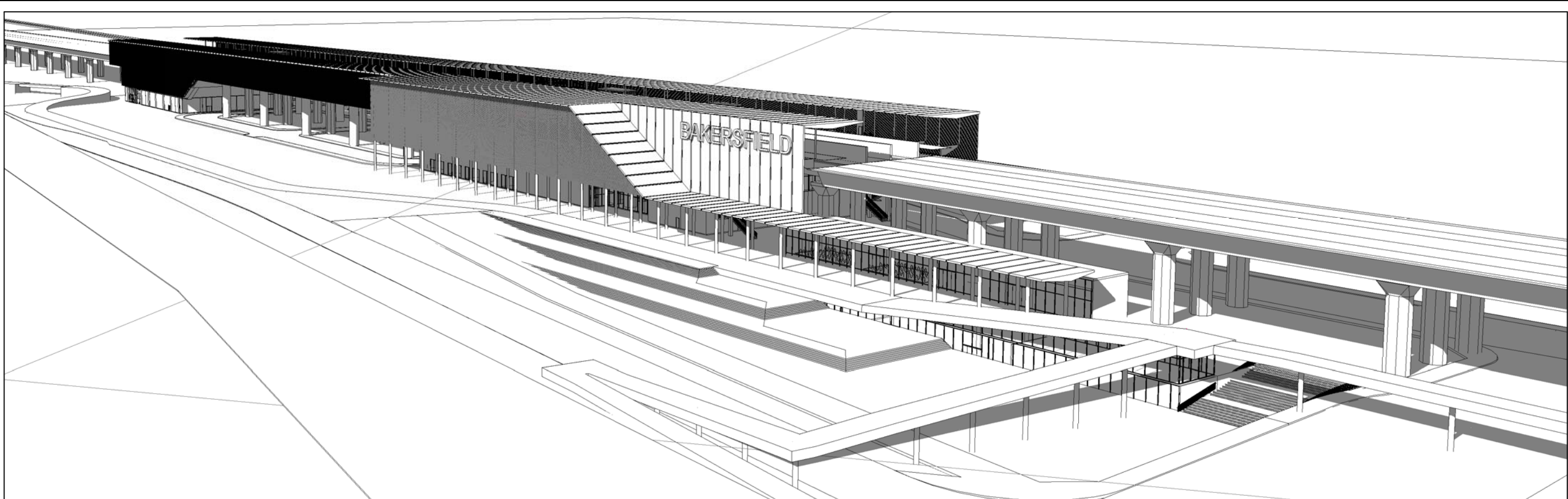
CALIFORNIA  
HIGH-SPEED RAIL AUTHORITY

CALIFORNIA HIGH-SPEED TRAIN PROJECT  
FRESNO TO BAKERSFIELD

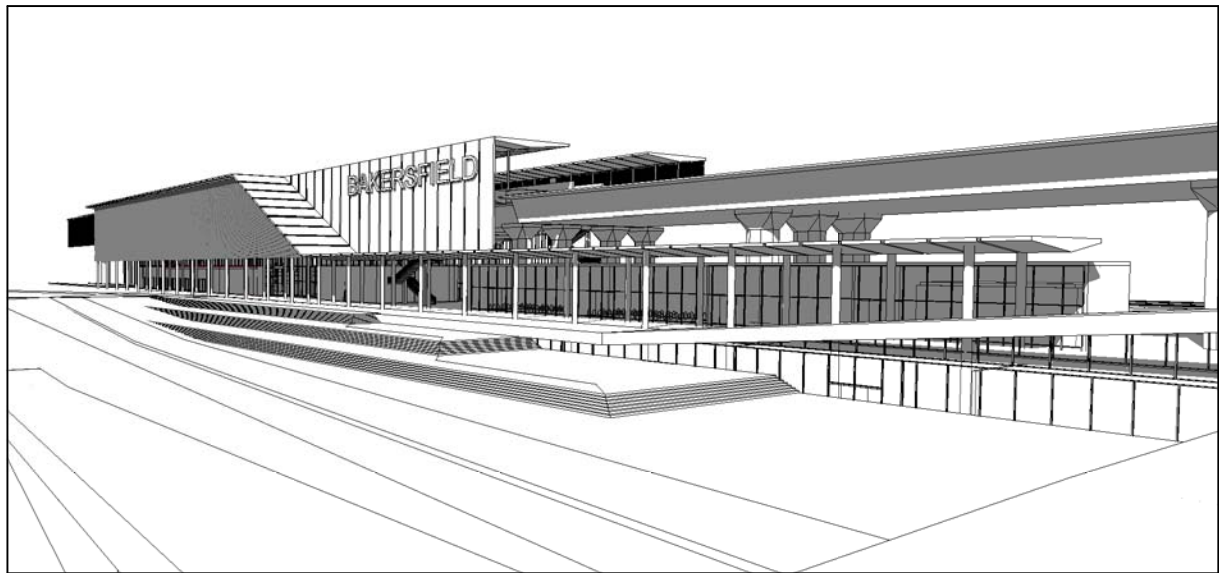
LOCALLY GENERATED ALTERNATIVE  
BAKERSFIELD F STREET STATION  
AXONOMETRIC VIEW

CONTRACT NO.	HSR13-44
DRAWING NO.	A9801
SCALE	N.T.S.
SHEET NO.	

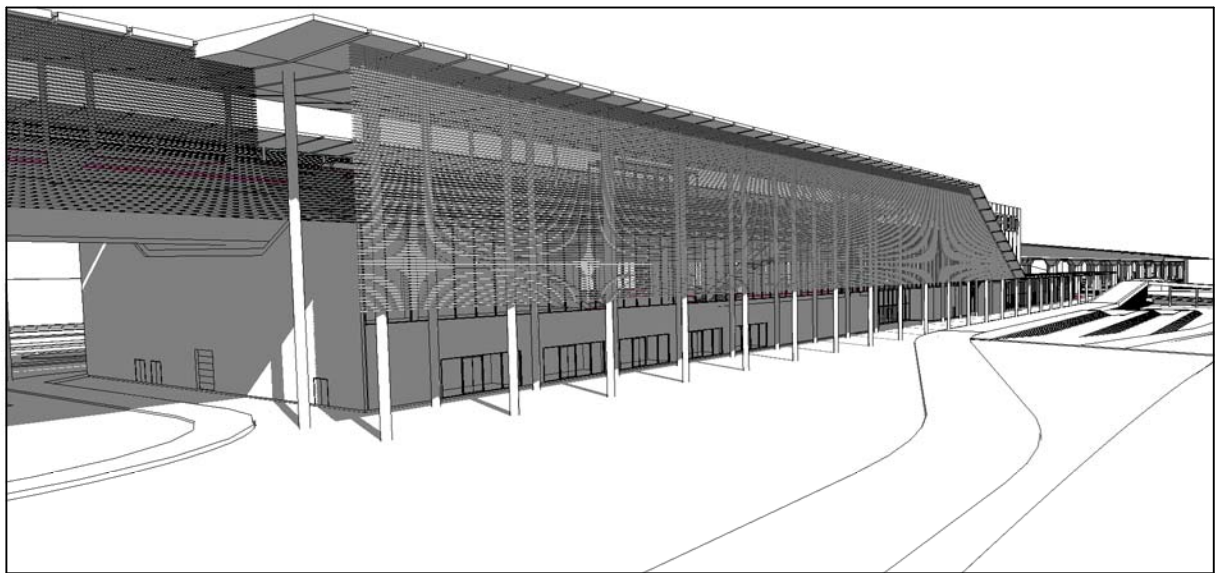




① OVERALL VIEW LOOKING WEST



② ENTRY PLAZA VIEW LOOKING WEST



③ MAIN ENTRANCE VIEW LOOKING EAST

REV	DATE	BY	CHK	APP	DESCRIPTION

DESIGNED BY  
L. Giaramidaro  
DRAWN BY  
S. Ahmadzai  
CHECKED BY  
P. Cowcher  
IN CHARGE  
G. Silwal  
DATE  
10/28/16

PEPD RECORD SET  
DESIGN  
SUBMISSION  
  
NOT FOR  
CONSTRUCTION

TYLIN INTERNATIONAL



CALIFORNIA  
HIGH-SPEED RAIL AUTHORITY

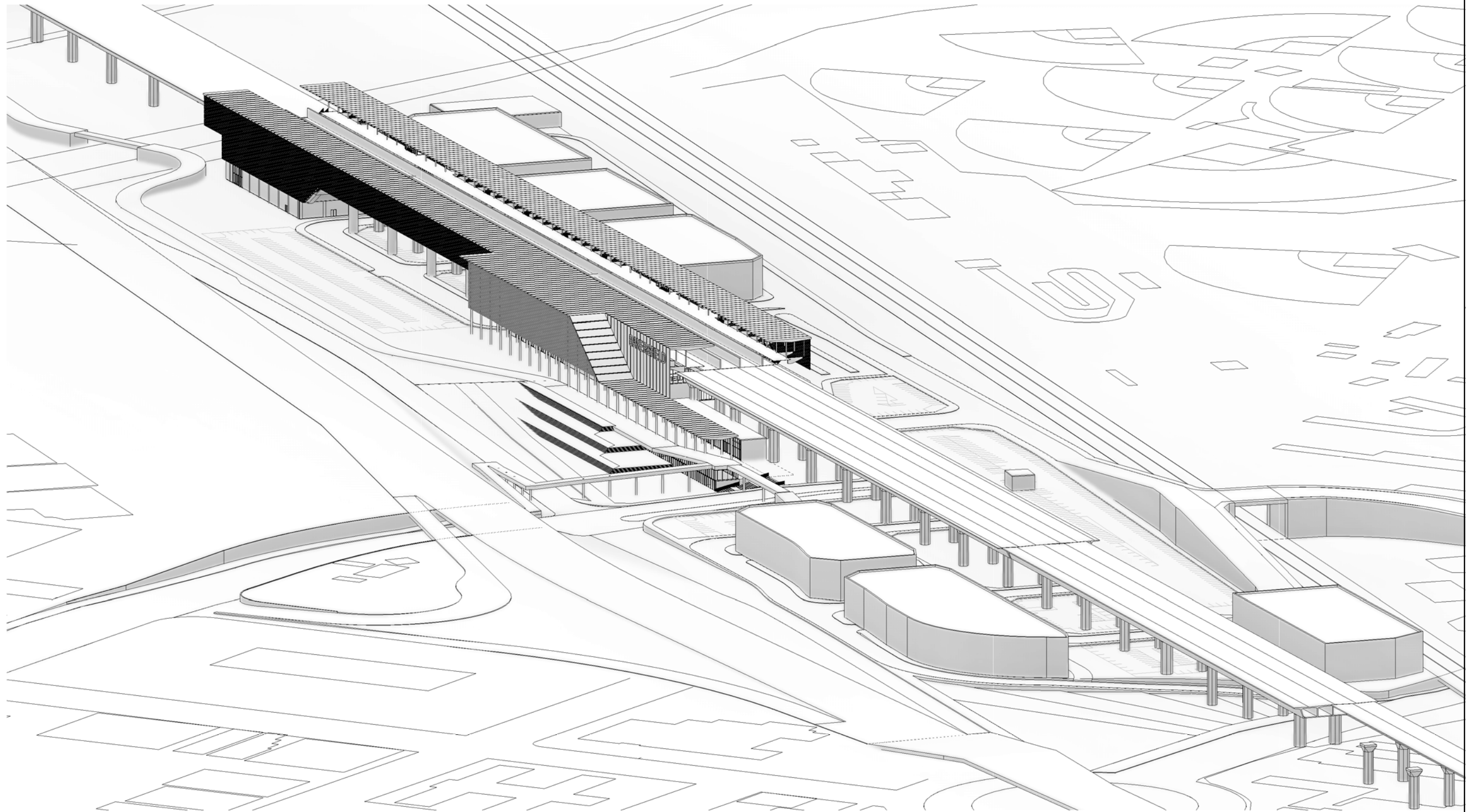
**CALIFORNIA HIGH-SPEED TRAIN PROJECT  
FRESNO TO BAKERSFIELD**

LOCALLY GENERATED ALTERNATIVE  
BAKERSFIELD F STREET STATION  
**PERSPECTIVE VIEWS**

CONTRACT NO.  
HSR13-44  
DRAWING NO.  
A9802  
SCALE  
N.T.S.  
SHEET NO.

c:\temp\491510.000\_HSR\_Bakersfield\_Stn\_giaramidaro.rvt

11/4/2016 3:36:59 PM



2 AERIAL VIEW

REV	DATE	BY	CHK	APP	DESCRIPTION

DESIGNED BY  
L. Giaramidaro  
DRAWN BY  
S. Ahmadzai  
CHECKED BY  
P. Cowcher  
IN CHARGE  
G. Silwal  
DATE  
10/28/16

PEPD RECORD SET  
DESIGN  
SUBMISSION  
  
NOT FOR  
CONSTRUCTION

TYLIN INTERNATIONAL



CALIFORNIA  
HIGH-SPEED RAIL AUTHORITY

CALIFORNIA HIGH-SPEED TRAIN PROJECT  
FRESNO TO BAKERSFIELD

LOCALLY GENERATED ALTERNATIVE  
BAKERSFIELD F STREET STATION  
AERIAL VIEW

CONTRACT NO.  
HSR13-44  
DRAWING NO.  
A9803  
SCALE  
N.T.S.  
SHEET NO.