

## **Volume III**

There were no changes to Volume III aside from the inadvertent omission of Section H, described below.

### **Section H**

Section H: Record Set PEPD Design Submission – Sound Barrier Plans was inadvertently omitted from Volume III during publication of the Draft Supplemental EIR/EIS. These plans are included here. No changes have been made to the drawings, and the inclusion of these plans does not change the footprint or findings of the F-B LGA project.

**This page intentionally left blank**

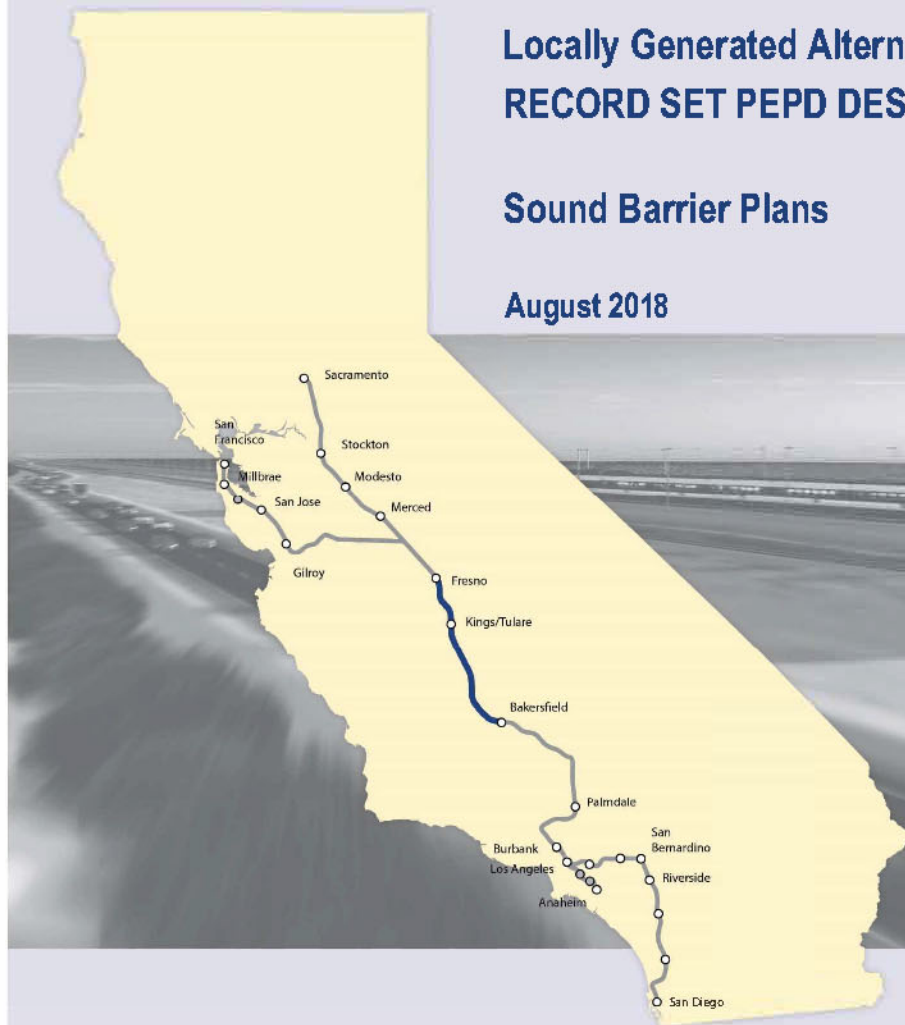
California High-Speed Rail Authority

# ***Fresno to Bakersfield Section***

**Locally Generated Alternative  
RECORD SET PEPD DESIGN SUBMISSION**

**Sound Barrier Plans**

**August 2018**



DRAWING NO.	REV NO.	DRAWING DESCRIPTION
		TRACK GUIDEWAY
TT-B0001		INDEX OF DRAWINGS
TT-B0002		GENERAL - GENERAL NOTES
TT-B0003		GENERAL - ABBREVIATIONS AND SYMBOLS SHEET 1
TT-B0004		GENERAL - ABBREVIATIONS AND SYMBOLS SHEET 2
TT-B0005		TRACK GUIDEWAY - KEY MAP SHEET 1
TT-B0006		TRACK GUIDEWAY - KEY MAP SHEET 2
TT-B0007		TRACK GUIDEWAY - HORIZONTAL ALIGNMENT DATA TABLE
TT-B0008		TRACK GUIDEWAY - TYPICAL SECTIONS SHEET 1
TT-B0009		TRACK GUIDEWAY - TYPICAL SECTIONS SHEET 2
TT-B0010		TRACK GUIDEWAY - TYPICAL SECTIONS SHEET 3
TT-B0011		TRACK GUIDEWAY - TYPICAL SECTIONS SHEET 4
TT-B0012		TRACK GUIDEWAY - TYPICAL SECTIONS SHEET 5
TT-B0013		TRACK GUIDEWAY - TYPICAL SECTIONS SHEET 6
TT-B0014		TRACK GUIDEWAY - TYPICAL SECTIONS SHEET 7
TT-B0015		TRACK GUIDEWAY - TYPICAL SECTIONS SHEET 8
TT-B0016		TRACK GUIDEWAY - TYPICAL SECTIONS SHEET 9
TT-B0017		TRACK GUIDEWAY - TYPICAL SECTIONS SHEET 10
TT-B0018		TRACK GUIDEWAY - TYPICAL SECTIONS SHEET 11
TT-B0019		TRACK GUIDEWAY - TYPICAL SECTIONS SHEET 12
TT-B0020		TRACK GUIDEWAY - TYPICAL SECTIONS SHEET 13
TT-B0021		TRACK GUIDEWAY - TYPICAL SECTIONS SHEET 14
TT-B0022		TRACK GUIDEWAY - TYPICAL SECTIONS SHEET 15
TT-D1001		TRACK GUIDEWAY - STA 5890+00 TO 5890+00 - PLAN AND PROFILE
TT-D1002		TRACK GUIDEWAY - STA 5890+00 TO 5918+00 - PLAN AND PROFILE
TT-D1003		TRACK GUIDEWAY - STA 5918+00 TO 5946+00 - PLAN AND PROFILE
TT-D1004		TRACK GUIDEWAY - STA 5946+00 TO 5974+00 - PLAN AND PROFILE
TT-D1005		TRACK GUIDEWAY - STA 5974+00 TO 6002+00 - PLAN AND PROFILE
TT-D1006		TRACK GUIDEWAY - STA 6002+00 TO 6030+00 - PLAN AND PROFILE
TT-D1007		TRACK GUIDEWAY - STA 6030+00 TO 6058+00 - PLAN AND PROFILE
TT-D1008		TRACK GUIDEWAY - STA 6058+00 TO 6086+00 - PLAN AND PROFILE
TT-D1009		TRACK GUIDEWAY - STA 6086+00 TO 6114+00 - PLAN AND PROFILE
TT-D1010		TRACK GUIDEWAY - STA 6114+00 TO 6142+00 - PLAN AND PROFILE
TT-D1011		TRACK GUIDEWAY - STA 6142+00 TO 6170+00 - PLAN AND PROFILE
TT-D1012		TRACK GUIDEWAY - STA 6170+00 TO 6198+00 - PLAN AND PROFILE
TT-D1013		TRACK GUIDEWAY - STA 6198+00 TO 6226+00 - PLAN AND PROFILE
TT-D1014		TRACK GUIDEWAY - STA 6226+00 TO 6254+00 - PLAN AND PROFILE
TT-D1015		TRACK GUIDEWAY - STA 6254+00 TO 6282+00 - PLAN AND PROFILE
TT-D1016		TRACK GUIDEWAY - STA 6282+00 TO 6310+00 - PLAN AND PROFILE
TT-D1017		TRACK GUIDEWAY - STA 6310+00 TO 6338+00 - PLAN AND PROFILE
TT-D1018		TRACK GUIDEWAY - STA 6338+00 TO 6366+00 - PLAN AND PROFILE
TT-D1019		TRACK GUIDEWAY - STA 6366+00 TO 6394+00 - PLAN AND PROFILE
TT-D1020		TRACK GUIDEWAY - STA 6394+00 TO 6422+00 - PLAN AND PROFILE
TT-D1021		TRACK GUIDEWAY - STA 6422+00 TO 6450+00 - PLAN AND PROFILE
TT-D1022		TRACK GUIDEWAY - STA 6450+00 TO 6478+00 - PLAN AND PROFILE
TT-D1023		TRACK GUIDEWAY - STA 6478+00 TO 6506+00 - PLAN AND PROFILE
TT-D1024		TRACK GUIDEWAY - STA 6506+00 TO 6534+00 - PLAN AND PROFILE
TT-D1025		TRACK GUIDEWAY - STA 6534+00 TO 6562+00 - PLAN AND PROFILE
TT-D1026		TRACK GUIDEWAY - STA 6562+00 TO 6590+00 - PLAN AND PROFILE
TT-D1027		TRACK GUIDEWAY - STA 6590+00 TO 6618+00 - PLAN AND PROFILE
TT-D1028		TRACK GUIDEWAY - STA 6618+00 TO 6646+00 - PLAN AND PROFILE
TT-D1029		TRACK GUIDEWAY - STA 6646+00 TO 6674+00 - PLAN AND PROFILE
TT-D1030		TRACK GUIDEWAY - STA 6674+00 TO 6702+00 - PLAN AND PROFILE
TT-D1031		TRACK GUIDEWAY - STA 6702+00 TO 6730+00 - PLAN AND PROFILE
TT-D1032		TRACK GUIDEWAY - STA 6730+00 TO 6758+00 - PLAN AND PROFILE
TT-D1033		TRACK GUIDEWAY - STA 6758+00 TO 6786+00 - PLAN AND PROFILE
TT-D1034		TRACK GUIDEWAY - STA 6786+00 TO 6814+00 - PLAN AND PROFILE
TT-D1035		TRACK GUIDEWAY - STA 6814+00 TO 6828+00 - PLAN AND PROFILE

DRAWING NO.	REV NO.	DRAWING DESCRIPTION
		TRACK GUIDEWAY
TT-D1036		TRACK GUIDEWAY - STA 6828+00 TO 6842+00 - PLAN AND PROFILE
TT-D1037		TRACK GUIDEWAY - STA 6842+00 TO 6856+00 - PLAN AND PROFILE
TT-D1038		TRACK GUIDEWAY - STA 6856+00 TO 6870+00 - PLAN AND PROFILE
TT-D1039		TRACK GUIDEWAY - STA 6870+00 TO 6884+00 - PLAN AND PROFILE
TT-D1040		TRACK GUIDEWAY - STA 6884+00 TO 6912+00 - PLAN AND PROFILE
TT-D1041		TRACK GUIDEWAY - STA 6912+00 TO 6940+00 - PLAN AND PROFILE
TT-D1042		TRACK GUIDEWAY - STA 6940+00 TO 6968+00 - PLAN AND PROFILE
TT-D1043		TRACK GUIDEWAY - STA 6968+00 TO 6996+00 - PLAN AND PROFILE
TT-D1044		TRACK GUIDEWAY - STA 6996+00 TO 7024+00 - PLAN AND PROFILE
TT-D1045		TRACK GUIDEWAY - STA 7024+00 TO 7052+00 - PLAN AND PROFILE
TT-D1046		TRACK GUIDEWAY - STA 7052+00 TO 7080+00 - PLAN AND PROFILE
TT-D1047		TRACK GUIDEWAY - STA 7080+00 TO 7101+08 - PLAN AND PROFILE
TT-D1048		TRACK GUIDEWAY - STATION TRACKS - STA 0+00 TO 26+00 - PLAN AND PROFILE
TT-D1049		TRACK GUIDEWAY - STATION TRACKS - STA 26+00 TO 48+93 - PLAN AND PROFILE
TT-D1050		TRACK GUIDEWAY - STATION NB STORAGE TRACK - PLAN AND PROFILE
TT-D1051		TRACK GUIDEWAY - STATION SB STORAGE TRACK - PLAN AND PROFILE
TT-D1052		BNSF PLAN - STA 1002+00 TO STA 1033+00
TT-D1053		BNSF PLAN - STA 1033+00 TO STA 1063+00
TT-D1054		BNSF PLAN - STA 1063+00 TO STA 1094+00
TT-D1055		BNSF PLAN - STA 1094+00 TO STA 1129+89
TT-D1056		BNSF TOR PROFILE - STA 865+00 TO STA 916+00 - SHEET 1
TT-D1057		BNSF TOR PROFILE - STA 916+00 TO STA 972+00 - SHEET 2
TT-D1058		BNSF TOR PROFILE - STA 972+00 TO STA 1028+00 - SHEET 3
TT-D1059		BNSF TOR PROFILE - STA 1028+00 TO STA 1084+00 - SHEET 4
TT-D1060		BNSF TOR PROFILE - STA 1084+00 TO STA 1122+00 - SHEET 5

REV	DATE	BY	CHK	APP	DESCRIPTION

DESIGNED BY  
J. TREJO  
DRAWN BY  
N. OLINO  
CHECKED BY  
E. WINTERS  
IN CHARGE  
P. PIENTON  
DATE  
10/28/2016

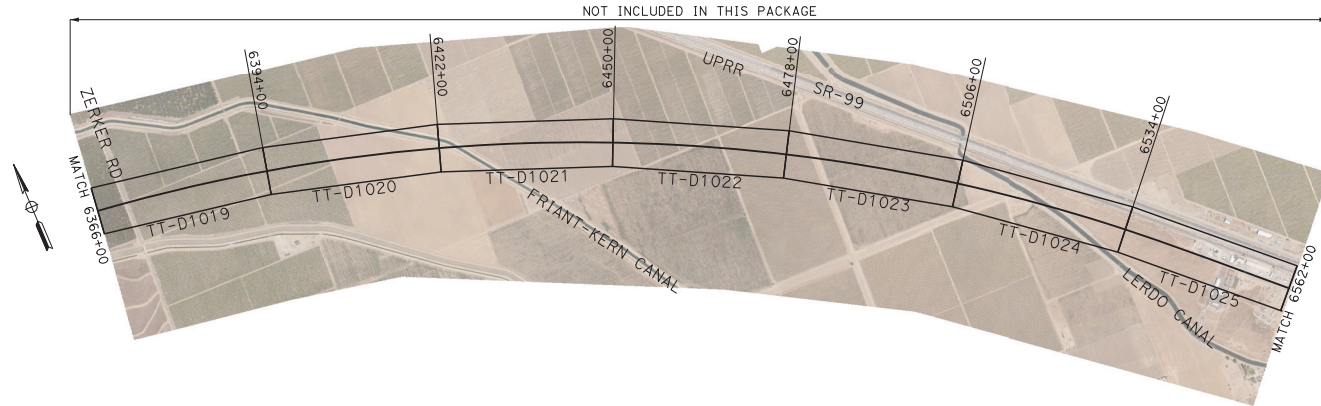
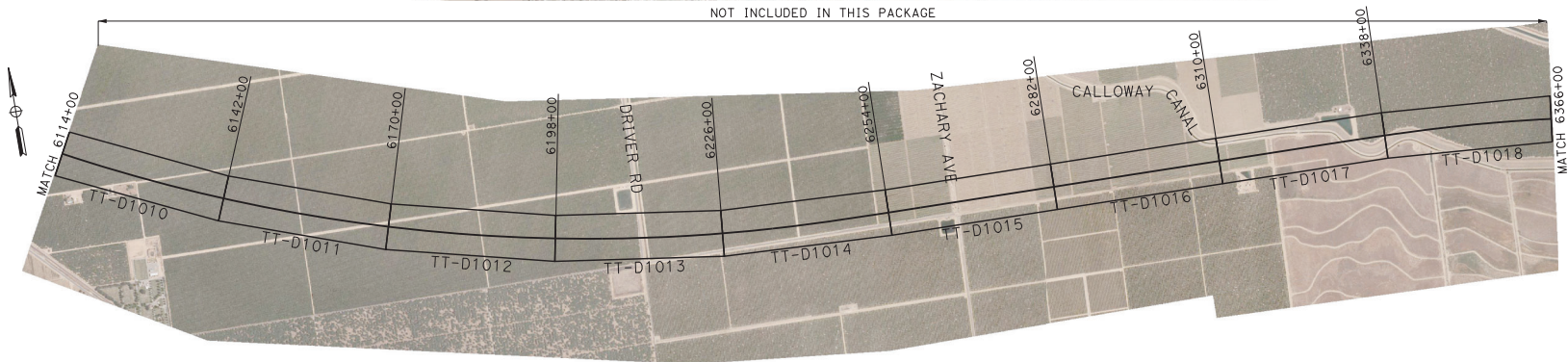
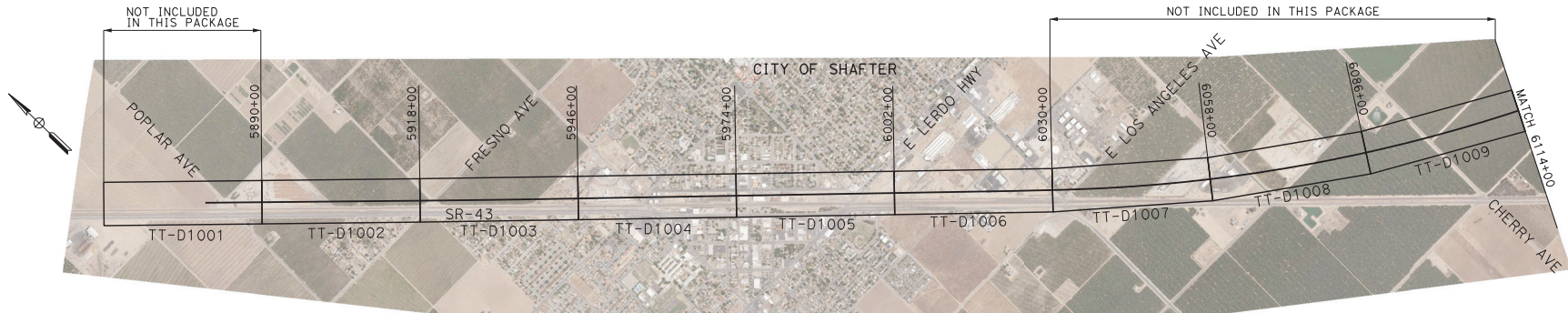
RECORD SET  
PEPD DESIGN  
SUBMISSION

TYLIN INTERNATIONAL



**CALIFORNIA HIGH-SPEED RAIL PROJECT**  
**FRESNO TO BAKERSFIELD**  
LOCALLY GENERATED ALTERNATIVE  
INDEX OF DRAWINGS

CONTRACT NO.  
HSR13-44  
DRAWING NO.  
TT-B0001  
SCALE  
NO SCALE  
SHEET NO.



DRAWING NUMBERS ARE CONSISTENT  
WITH THE 15% RECORD SET PACKAGE.  
ONLY RELEVANT DRAWINGS ARE  
INCLUDED IN THIS SOUND BARRIER PACKAGE.



REV	DATE	BY	CHK	APP	DESCRIPTION

DESIGNED BY  
J. TREJO  
DRAWN BY  
N. OLINO  
CHECKED BY  
E. WINTERS  
IN CHARGE  
P. PIENTON  
DATE  
10/28/2016

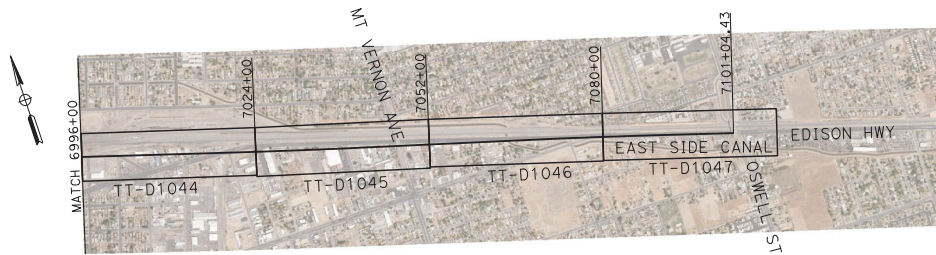
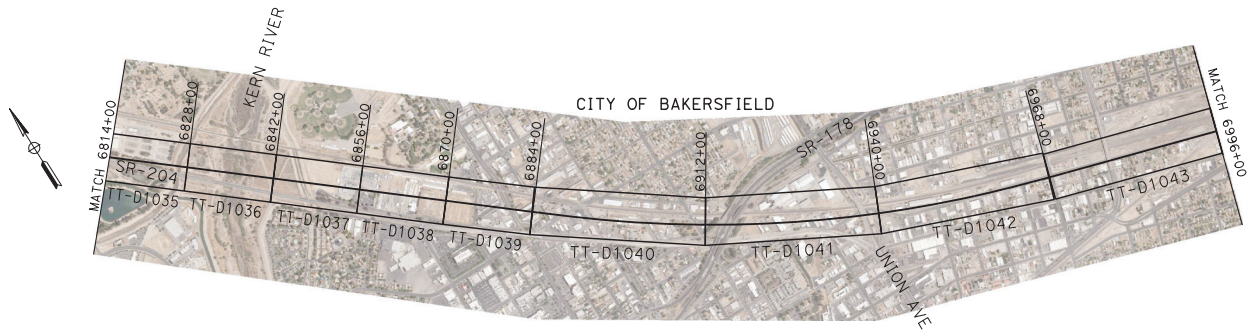
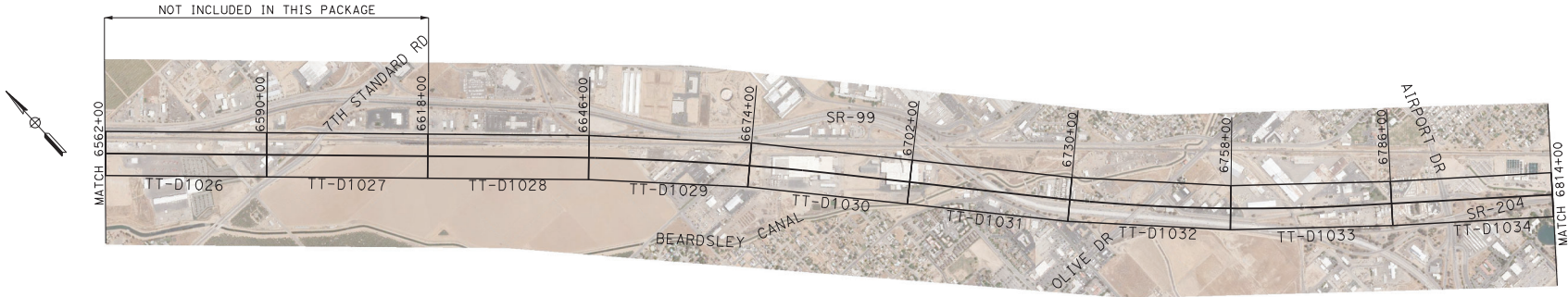
**RECORD SET  
PED DESIGN  
SUBMISSION**

**TYLIN INTERNATIONAL**

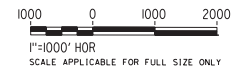


**CALIFORNIA HIGH-SPEED RAIL PROJECT  
FRESNO TO BAKERSFIELD**  
LOCALLY GENERATED ALTERNATIVE  
TRACK GUIDEWAY  
KEY MAP SHEET 1

CONTRACT NO.  
HSR13-44  
DRAWING NO.  
TT-B0005  
SCALE  
AS SHOWN  
SHEET NO.



DRAWING NUMBERS ARE CONSISTENT WITH THE 15% RECORD SET PACKAGE. ONLY RELEVANT DRAWINGS ARE INCLUDED IN THIS SOUND BARRIER PACKAGE.



REV	DATE	BY	CHK	APP	DESCRIPTION

DESIGNED BY  
J. TREJO  
DRAWN BY  
N. OLINO  
CHECKED BY  
E. WINTERS  
IN CHARGE  
P. PIENTON  
DATE  
10/28/2016

**RECORD SET  
PED DESIGN  
SUBMISSION**

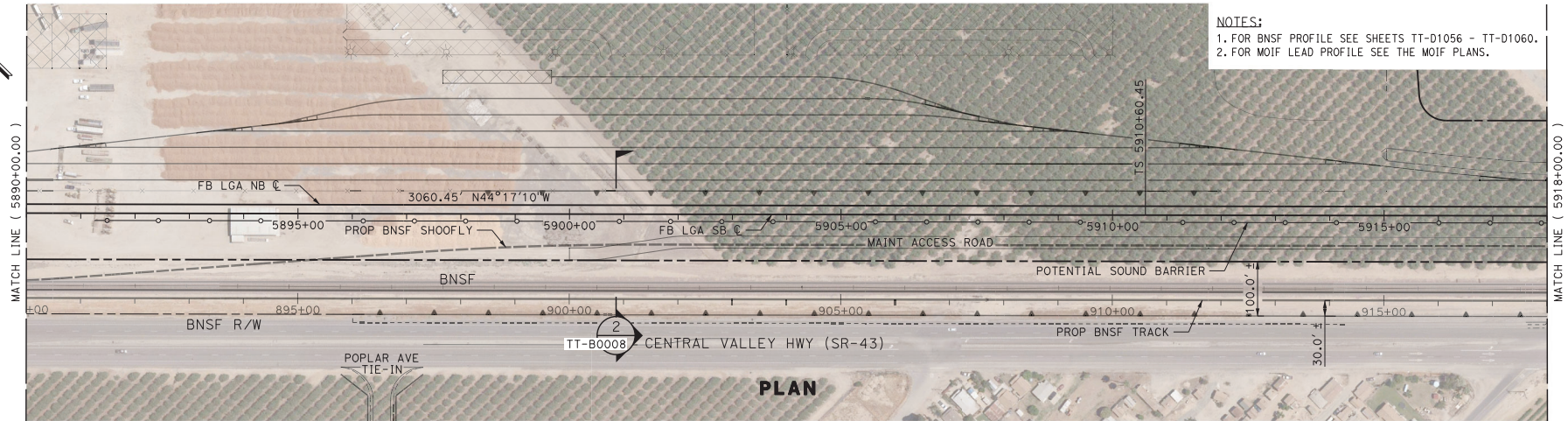
**TYLIN INTERNATIONAL**



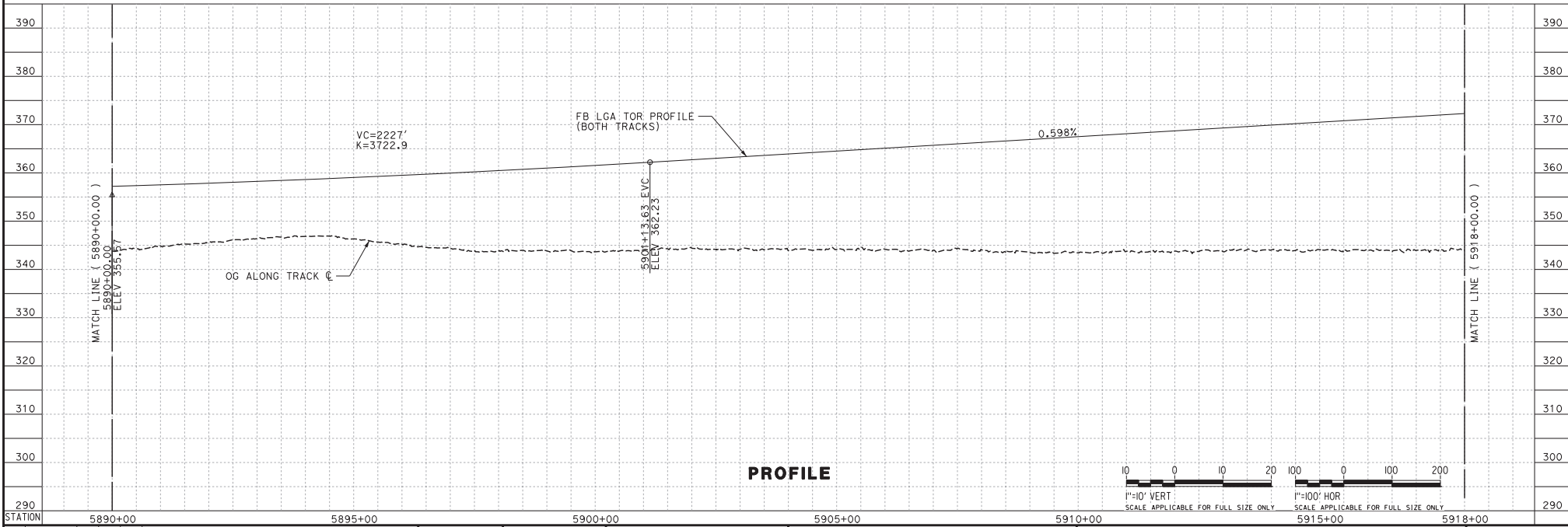
**CALIFORNIA HIGH-SPEED RAIL PROJECT**  
**FRESNO TO BAKERSFIELD**  
 LOCALLY GENERATED ALTERNATIVE  
 TRACK GUIDEWAY  
 KEY MAP SHEET 2

CONTRACT NO.  
HSR13-44  
DRAWING NO.  
TT-B0006  
SCALE  
AS SHOWN  
SHEET NO.

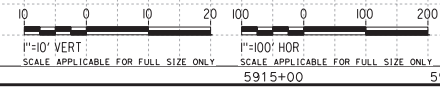
Projects\701206\N.BF55.00 CAD Sheet Files\Sound Barrier\BFS5A-TT-D1002.dgn  
#P1DRV5#  
#PENTBL5#  
TYL\Trejo 12/21/2016 2:59:55 PM



- NOTES:  
1. FOR BNSF PROFILE SEE SHEETS TT-D1056 - TT-D1060.  
2. FOR MOIF LEAD PROFILE SEE THE MOIF PLANS.



PROFILE



REV	DATE	BY	CHK	APP	DESCRIPTION

DESIGNED BY J. TREJO
DRAWN BY T. WILKINSON
CHECKED BY E. WINTERS
IN CHARGE P. PIENTON
DATE 10/28/2016

RECORD SET  
PED DESIGN  
SUBMISSION

TYLIN INTERNATIONAL

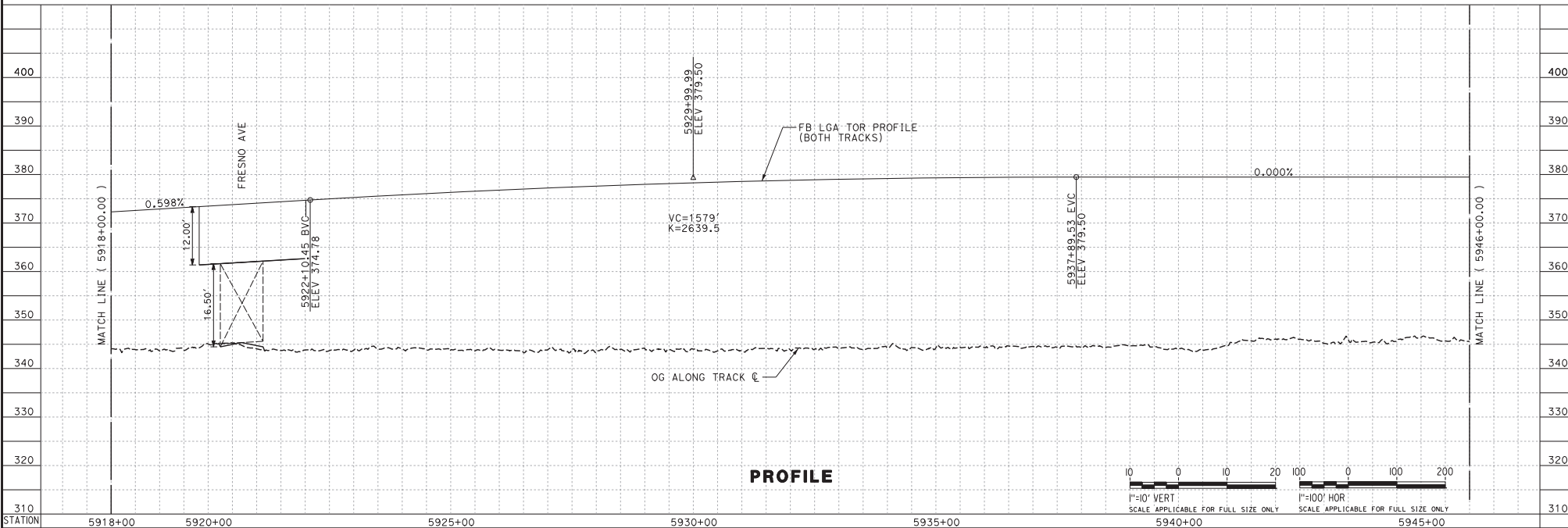
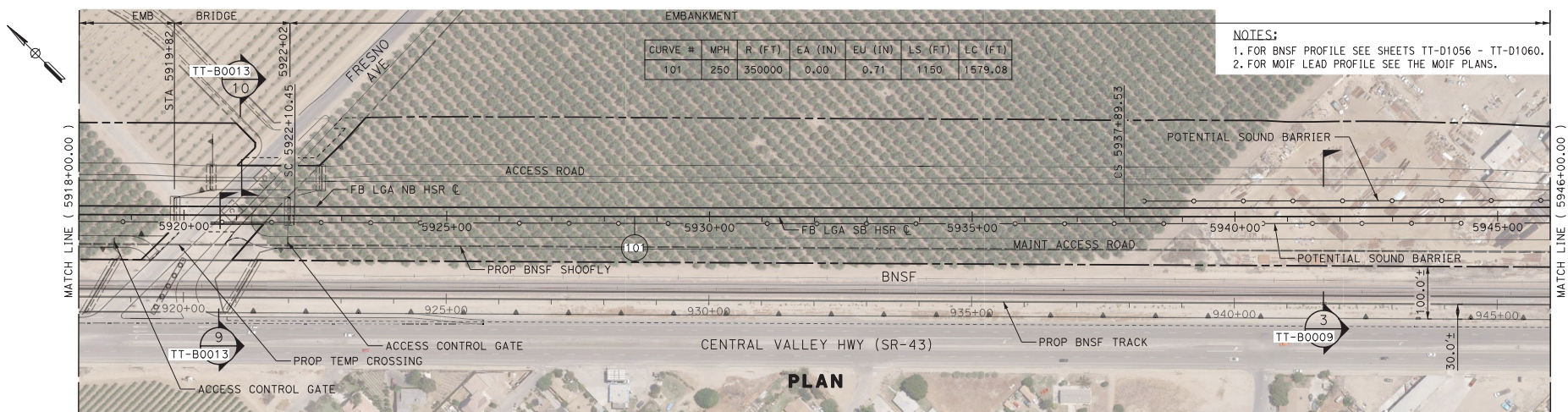


CALIFORNIA  
HIGH-SPEED RAIL AUTHORITY

**CALIFORNIA HIGH-SPEED RAIL PROJECT**  
**FRESNO TO BAKERSFIELD**  
LOCALLY GENERATED ALTERNATIVE  
TRACK GUIDEWAY  
STA 5890+00 TO 5918+00  
PROPOSED SOUND BARRIER

CONTRACT NO.  
HSR13-44  
DRAWING NO.  
TT-D1002  
SCALE  
AS SHOWN  
SHEET NO.

Projects\101206\N.BFSS\00 CAD Sheet Files\Sound Barrier\BFSSA-TT-D1003.dgn  
#P1:DRVS#  
#PENTBL#  
TYL\Trejo 12/21/2016 2:59:52 PM



REV	DATE	BY	CHK	APP	DESCRIPTION

DESIGNED BY J. TREJO
DRAWN BY T. WILKINSON
CHECKED BY E. WINTERS
IN CHARGE P. PIENTON
DATE 10/28/2016

RECORD SET  
PED DESIGN  
SUBMISSION

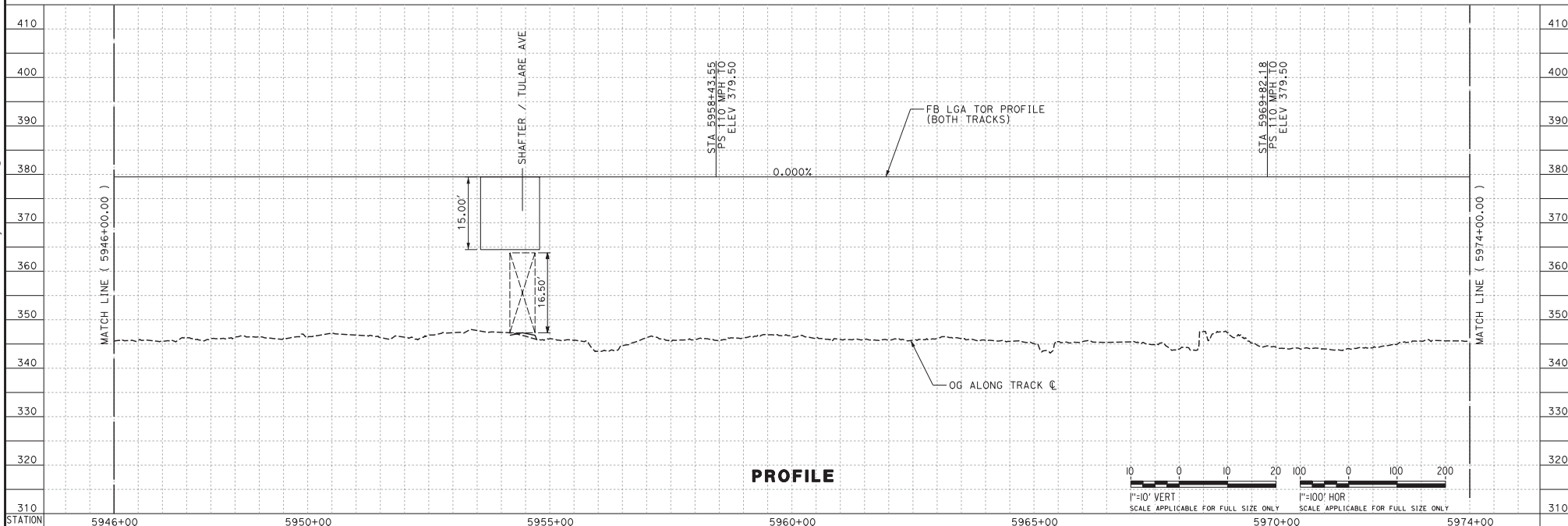
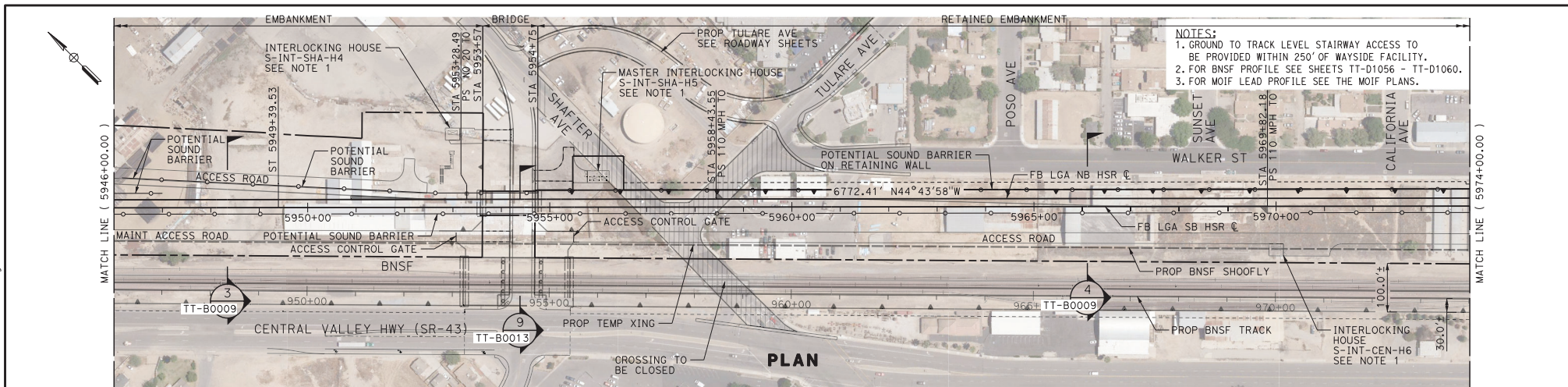
TYLIN INTERNATIONAL



CALIFORNIA  
HIGH-SPEED RAIL AUTHORITY

**CALIFORNIA HIGH-SPEED RAIL PROJECT**  
**FRESNO TO BAKERSFIELD**  
LOCALLY GENERATED ALTERNATIVE  
TRACK GUIDEWAY  
STA 5918+00 TO 5946+00  
PROPOSED SOUND BARRIER

CONTRACT NO.  
HSR13-44  
DRAWING NO.  
TT-D1003  
SCALE  
AS SHOWN  
SHEET NO.



REV	DATE	BY	CHK	APP	DESCRIPTION

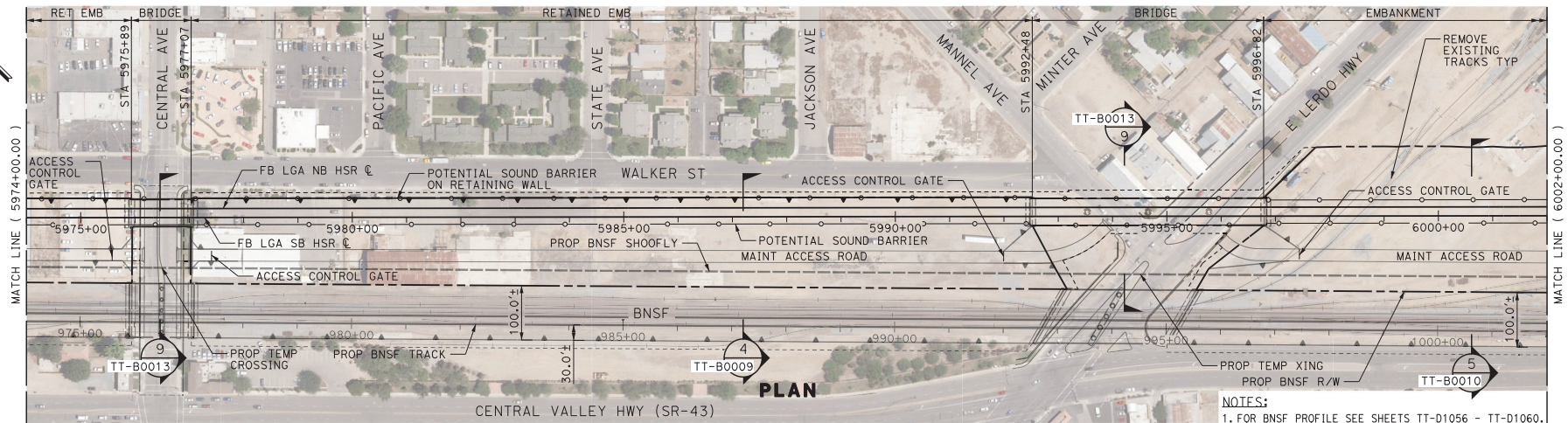
DESIGNED BY J. TREJO
DRAWN BY T. WILKINSON
CHECKED BY E. WINTERS
IN CHARGE P. PIENTON
DATE 10/28/2016

<b>RECORD SET PED DESIGN SUBMISSION</b>
<b>TYLIN INTERNATIONAL</b>



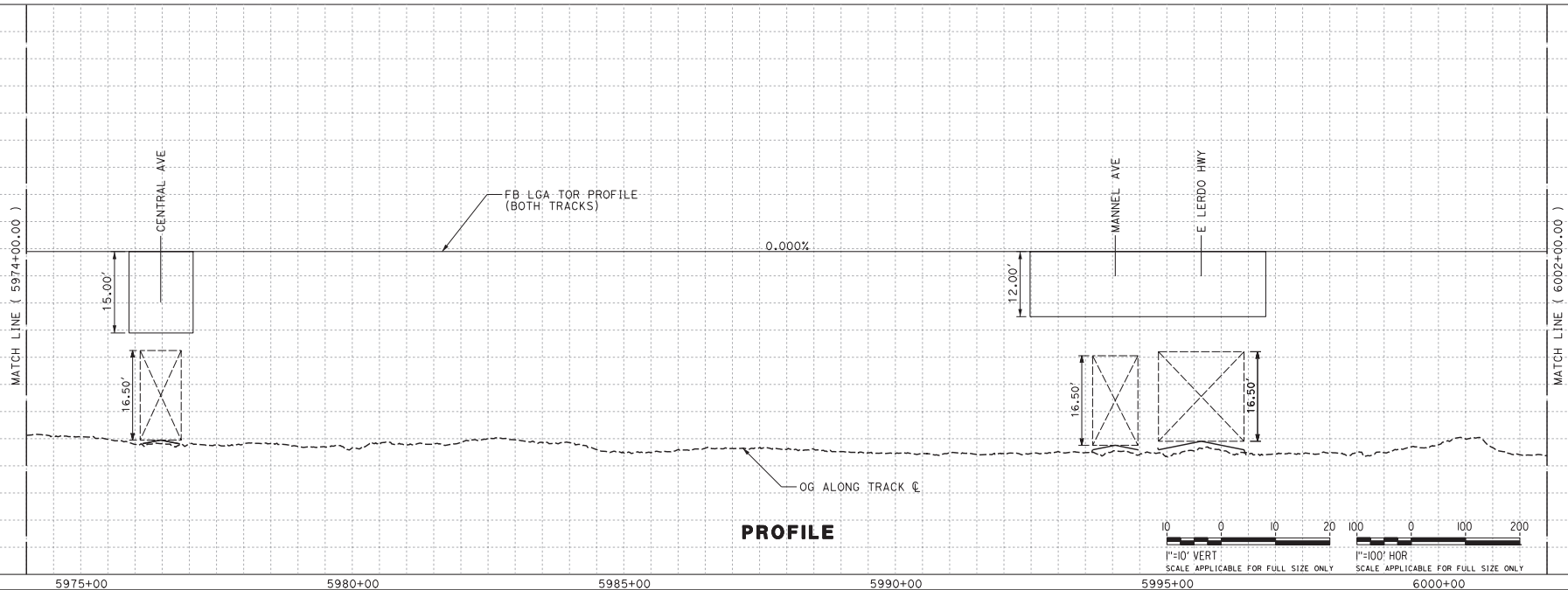
<b>CALIFORNIA HIGH-SPEED RAIL PROJECT FRESNO TO BAKERSFIELD LOCALLY GENERATED ALTERNATIVE TRACK GUIDEWAY STA 5946+00 TO 5974+00 PROPOSED SOUND BARRIER</b>
CONTRACT NO. HSR13-44
DRAWING NO. TT-D1004
SCALE AS SHOWN
SHEET NO.

Projects\701206\N.BF55.00 CAD Sheet Files\Sound Barrier\BFS5-TT-D1005.dgn  
#P:LDIVS#  
#P:ENTBL#  
TYL\jtrejo 12/21/2016 2:59:53 PM

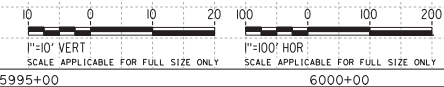


PLAN

NOTES:  
1. FOR BNSF PROFILE SEE SHEETS TT-D1056 - TT-D1060.



PROFILE



REV	DATE	BY	CHK	APP	DESCRIPTION

DESIGNED BY  
J. TREJO  
DRAWN BY  
T. WILKINSON  
CHECKED BY  
E. WINTERS  
IN CHARGE  
P. PIENTON  
DATE  
10/28/2016

RECORD SET  
PED DESIGN  
SUBMISSION

TYLIN INTERNATIONAL



**CALIFORNIA HIGH-SPEED RAIL PROJECT**  
**FRESNO TO BAKERSFIELD**  
LOCALLY GENERATED ALTERNATIVE  
TRACK GUIDEWAY  
STA 5974+00 TO 6002+00  
PROPOSED SOUND BARRIER

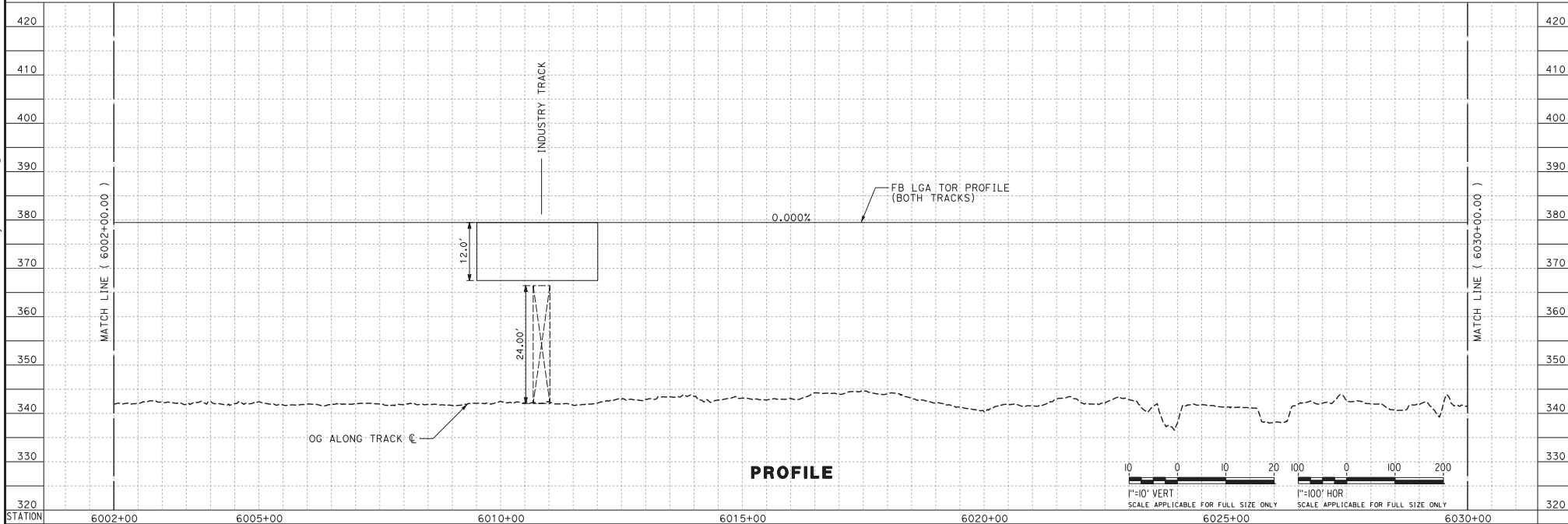
CONTRACT NO.  
HSR13-44  
DRAWING NO.  
TT-D1005  
SCALE  
AS SHOWN  
SHEET NO.

Projects\701206\N.BFSS\00\_CADD\Sheet Files\Sound Barrier\BFS5A-TT-D1006.dgn

#P.LDRVLS#

#PENTBLS#

TYL\jtrejo 12/21/2016 10:00:33 PM



REV	DATE	BY	CHK	APP	DESCRIPTION

DESIGNED BY  
J. TREJO  
DRAWN BY  
T. WILKINSON  
CHECKED BY  
E. WINTERS  
IN CHARGE  
P. PIENTON  
DATE  
10/28/2016

**RECORD SET  
PED DESIGN  
SUBMISSION**

**TYLIN INTERNATIONAL**



**CALIFORNIA**  
HIGH-SPEED RAIL AUTHORITY

**CALIFORNIA HIGH-SPEED RAIL PROJECT  
FRESNO TO BAKERSFIELD**  
LOCALLY GENERATED ALTERNATIVE  
TRACK GUIDEWAY  
STA 6002+00 TO 6030+00  
PROPOSED SOUND BARRIER

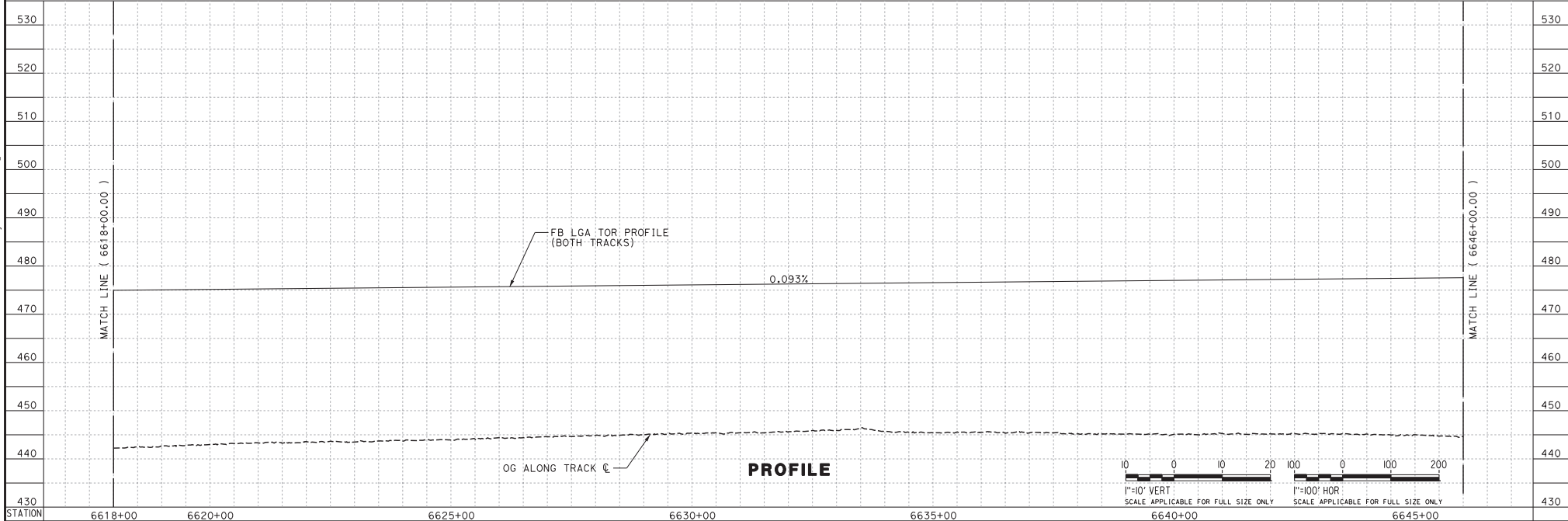
CONTRACT NO.  
HSR13-44  
DRAWING NO.  
TT-D1006  
SCALE  
AS SHOWN  
SHEET NO.

Projects\701206\N.BFSS\00 CAD Sheet Files\Sound Barrier\BFSSA-TT-D1028.dgn

#PLTDIVS#

#PENTBLS#

TYL\jtrejo 12/21/2016 10:05 PM



REV	DATE	BY	CHK	APP	DESCRIPTION

DESIGNED BY J. TREJO
DRAWN BY T. WILKINSON
CHECKED BY E. WINTERS
IN CHARGE P. PIENTON
DATE 10/28/2016

**RECORD SET  
PEDD DESIGN  
SUBMISSION**

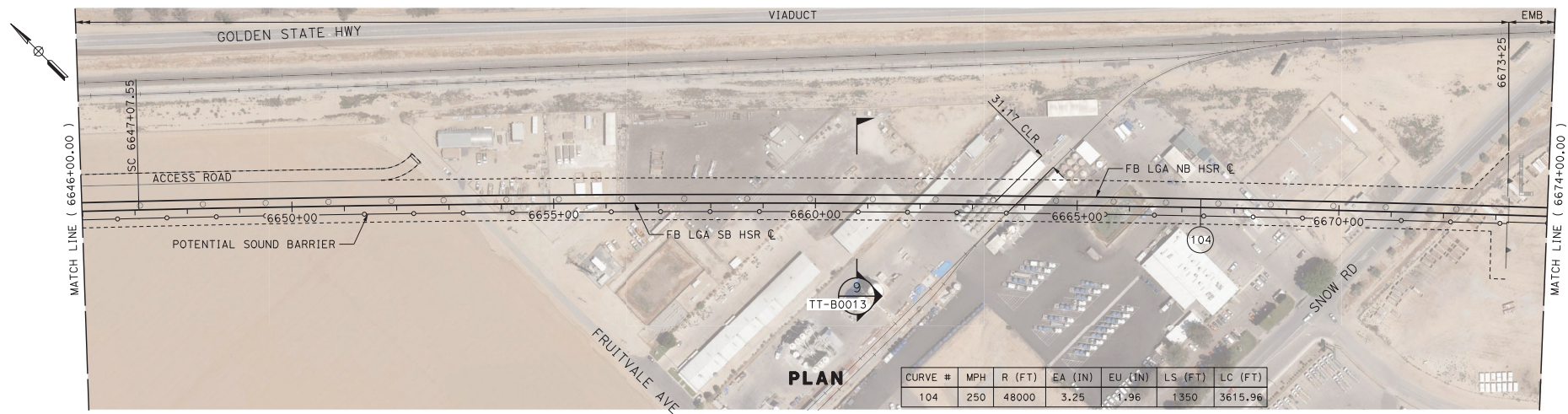
**TYLIN INTERNATIONAL**



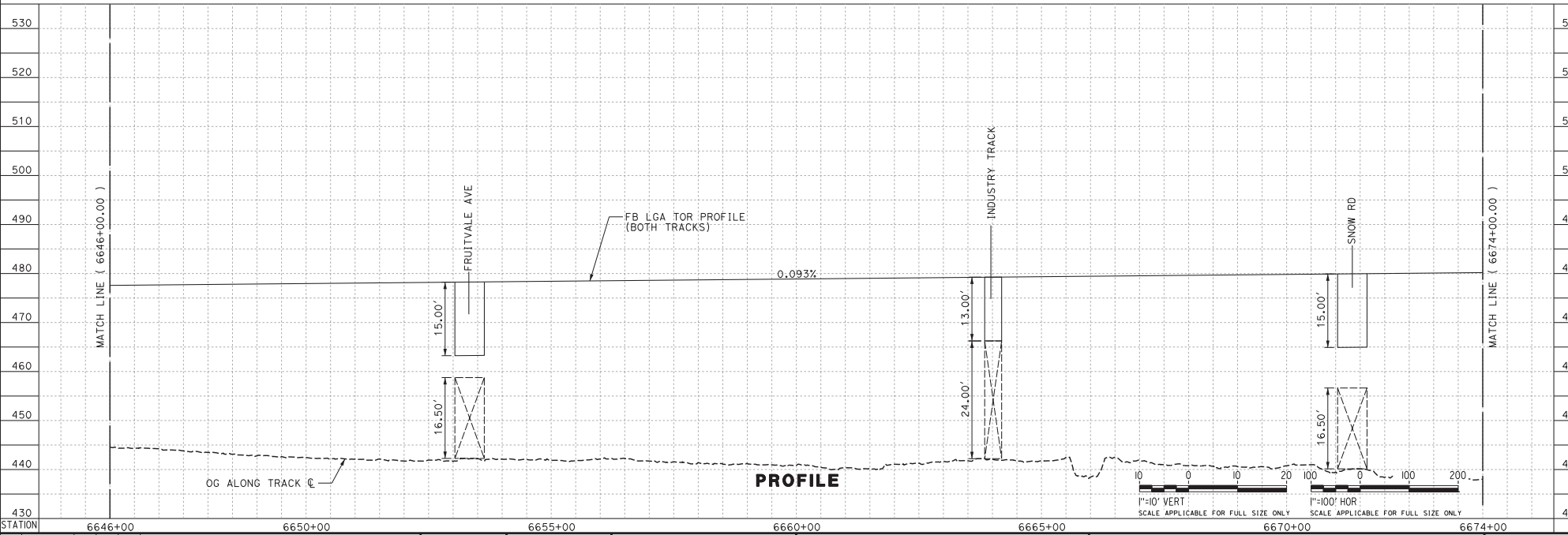
**CALIFORNIA HIGH-SPEED RAIL PROJECT**  
**FRESNO TO BAKERSFIELD**  
LOCALLY GENERATED ALTERNATIVE  
TRACK GUIDEWAY  
STA 6618+00 TO 6646+00  
PROPOSED SOUND BARRIER

CONTRACT NO.  
HSR13-44  
DRAWING NO.  
TT-D1028  
SCALE  
AS SHOWN  
SHEET NO.

Projects\701206\N.BF55\00 CAD Sheet Files\Sound Barrier\BF55A-TT-D1029.dgn  
#P:LTDRV\$#  
#P:ENTBL\$#  
TYL\JTrejo 12/21/2016 10:00:20 PM



CURVE #	MPH	R (FT)	EA (IN)	EU (IN)	LS (FT)	LC (FT)
104	250	48000	3.25	1.96	1350	3615.96



REV	DATE	BY	CHK	APP	DESCRIPTION

DESIGNED BY J. TREJO
DRAWN BY T. WILKINSON
CHECKED BY E. WINTERS
IN CHARGE P. PIENTON
DATE 10/28/2016

RECORD SET  
PED DESIGN  
SUBMISSION

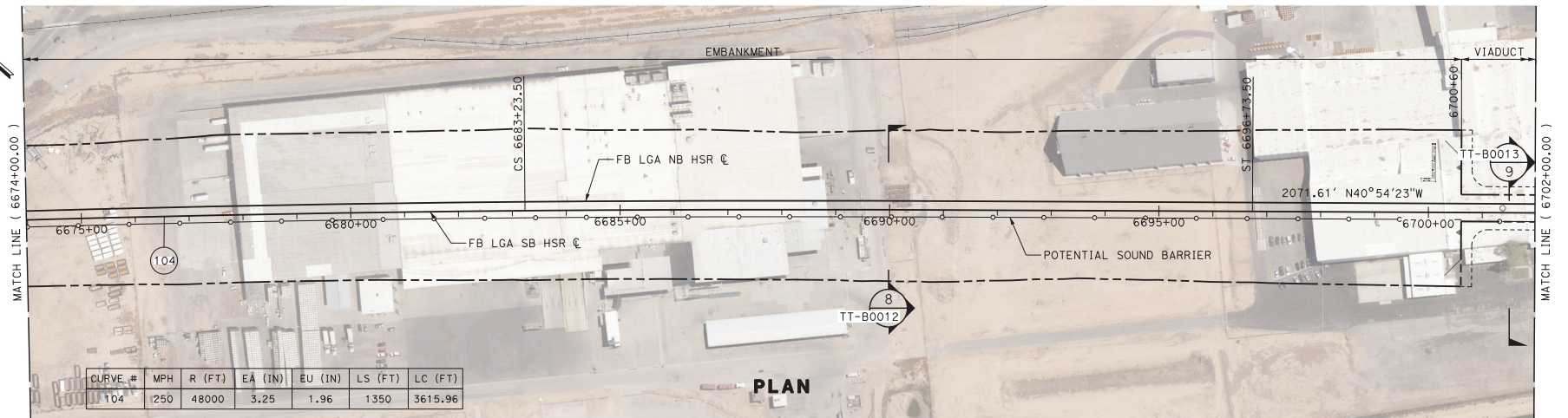
TYLIN INTERNATIONAL



**CALIFORNIA HIGH-SPEED RAIL PROJECT**  
**FRESNO TO BAKERSFIELD**  
LOCALLY GENERATED ALTERNATIVE  
TRACK GUIDEWAY  
STA 6646+00 TO 6674+00  
PROPOSED SOUND BARRIER

CONTRACT NO.  
HSR13-44  
DRAWING NO.  
TT-D1029  
SCALE  
AS SHOWN  
SHEET NO.

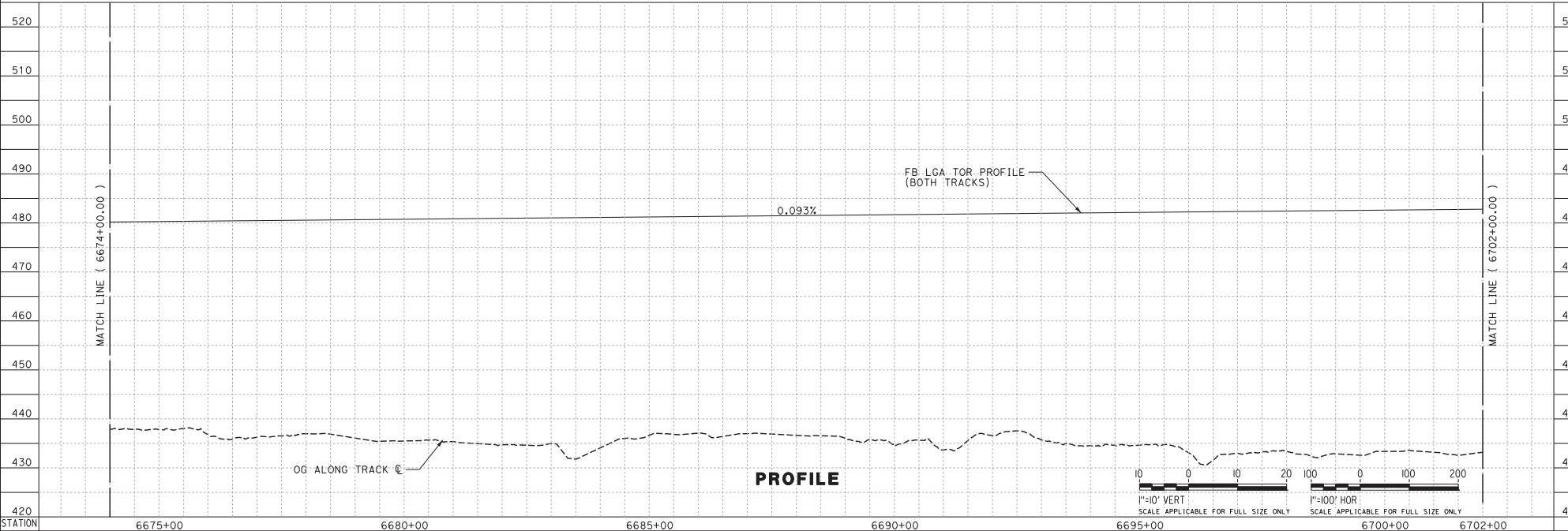
Projects\701206\N.BFSS\00 CAD Sheet Files\Sound Barrier\BFSSA-TT-D1030.dgn  
#P1:DRVS#  
#PENTBL#  
TYL\Trejo 12/21/2016 10:05:25 PM



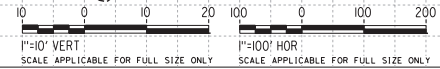
CURVE #	MPH	R (FT)	EA (IN)	EU (IN)	LS (FT)	LC (FT)
104	250	48000	3.25	1.96	1350	3615.96

MATCH LINE ( 6674+00.00 )

MATCH LINE ( 6702+00.00 )



PROFILE



REV	DATE	BY	CHK	APP	DESCRIPTION

DESIGNED BY J. TREJO
DRAWN BY N. OLINO
CHECKED BY E. WINTERS
IN CHARGE P. PIENTON
DATE 10/28/2016

RECORD SET  
PED DESIGN  
SUBMISSION

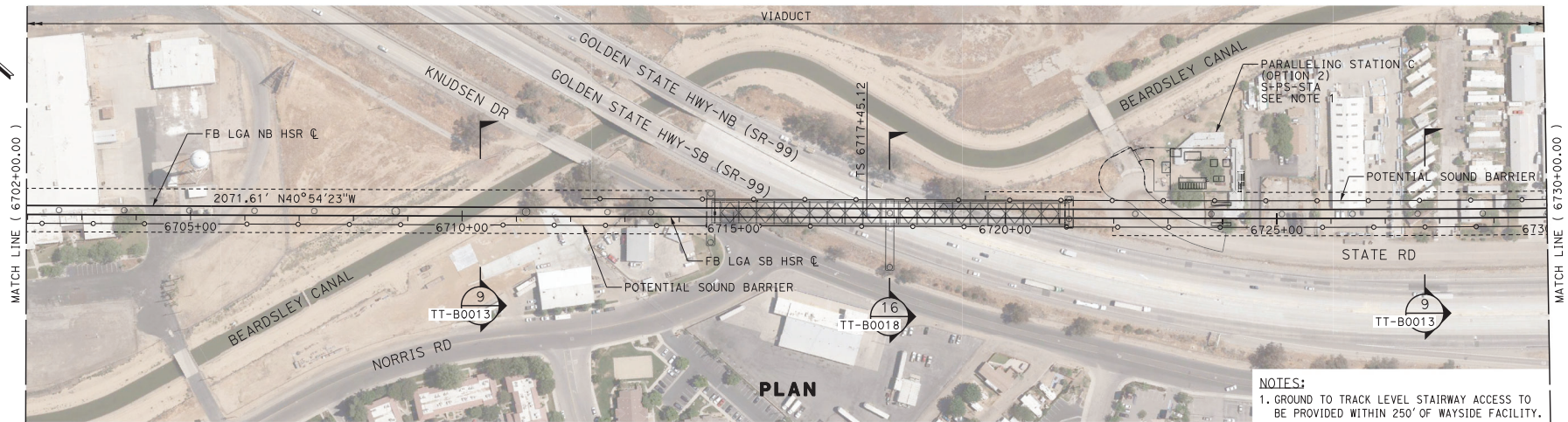
TYLIN INTERNATIONAL



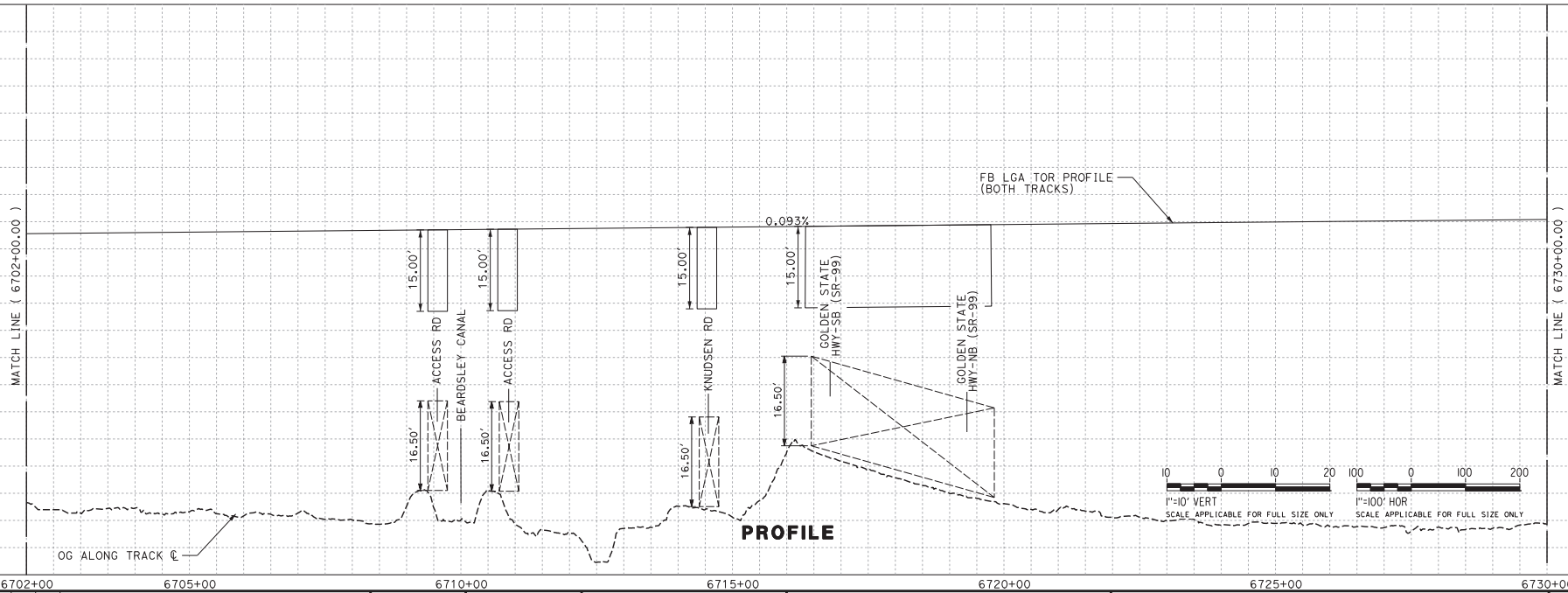
**CALIFORNIA HIGH-SPEED RAIL PROJECT**  
**FRESNO TO BAKERSFIELD**  
LOCALLY GENERATED ALTERNATIVE  
TRACK GUIDEWAY  
STA 6674+00 TO 6702+00  
PROPOSED SOUND BARRIER

CONTRACT NO.  
HSR13-44  
DRAWING NO.  
TT-D1030  
SCALE  
AS SHOWN  
SHEET NO.

Projects\701206\N.BFSS\00 CAD Sheet Files\Sound Barrier\BFSSA-TT-D1031.dgn  
#P:LDIVS#  
#P:ENTBLS#  
TYL\jtrejo 12/21/2016 10:00:11 PM



NOTES:  
1. GROUND TO TRACK LEVEL STAIRWAY ACCESS TO BE PROVIDED WITHIN 250' OF WAYSIDE FACILITY.



REV	DATE	BY	CHK	APP	DESCRIPTION

DESIGNED BY  
J. TREJO  
DRAWN BY  
N. OLINO  
CHECKED BY  
E. WINTERS  
IN CHARGE  
P. PIENTON  
DATE  
10/28/2016

**RECORD SET  
PED DESIGN  
SUBMISSION**

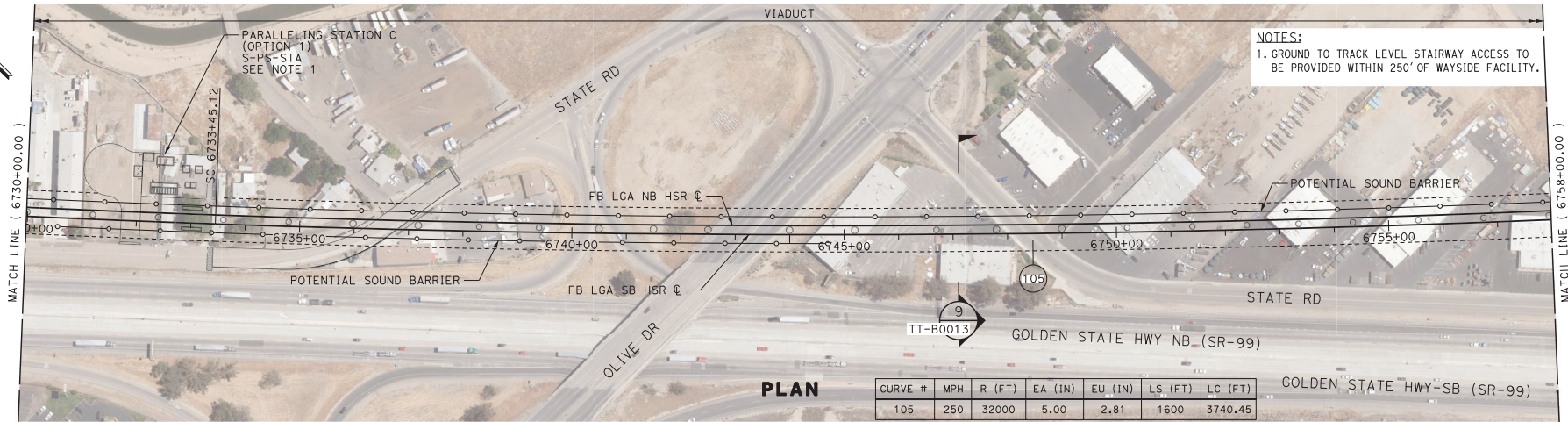
**TYLIN INTERNATIONAL**



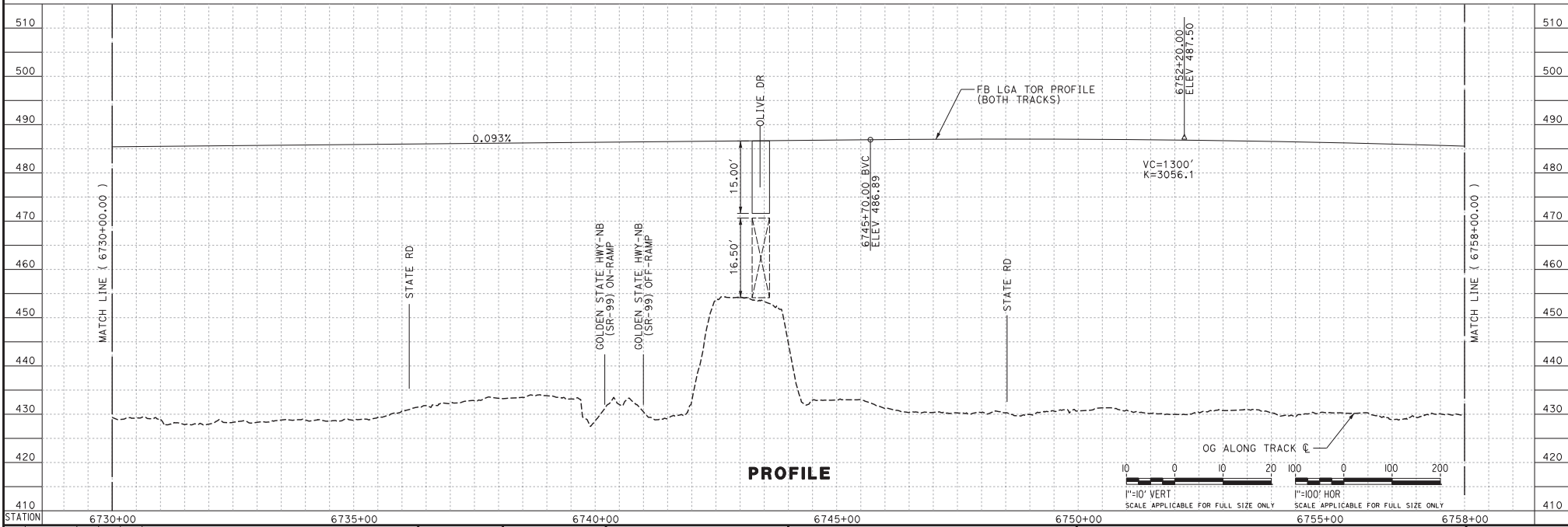
**CALIFORNIA HIGH-SPEED RAIL PROJECT**  
**FRESNO TO BAKERSFIELD**  
LOCALLY GENERATED ALTERNATIVE  
TRACK GUIDEWAY  
STA 6702+00 TO 6730+00  
PROPOSED SOUND BARRIER

CONTRACT NO.  
HSR13-44  
DRAWING NO.  
TT-D1031  
SCALE  
AS SHOWN  
SHEET NO.

Projects\701206\N.BF55\00 CAD Sheet Files\Sound Barrier\BF55A-TT-D1032.dgn  
#P:LDIVS#  
#P:ENTBL#  
TYL\Trejo 12/21/2016 10:02:28 PM



PLAN



PROFILE

REV	DATE	BY	CHK	APP	DESCRIPTION

DESIGNED BY J. TREJO
DRAWN BY N. OLINO
CHECKED BY E. WINTERS
IN CHARGE P. PIENTON
DATE 10/28/2016

RECORD SET  
PED DESIGN  
SUBMISSION

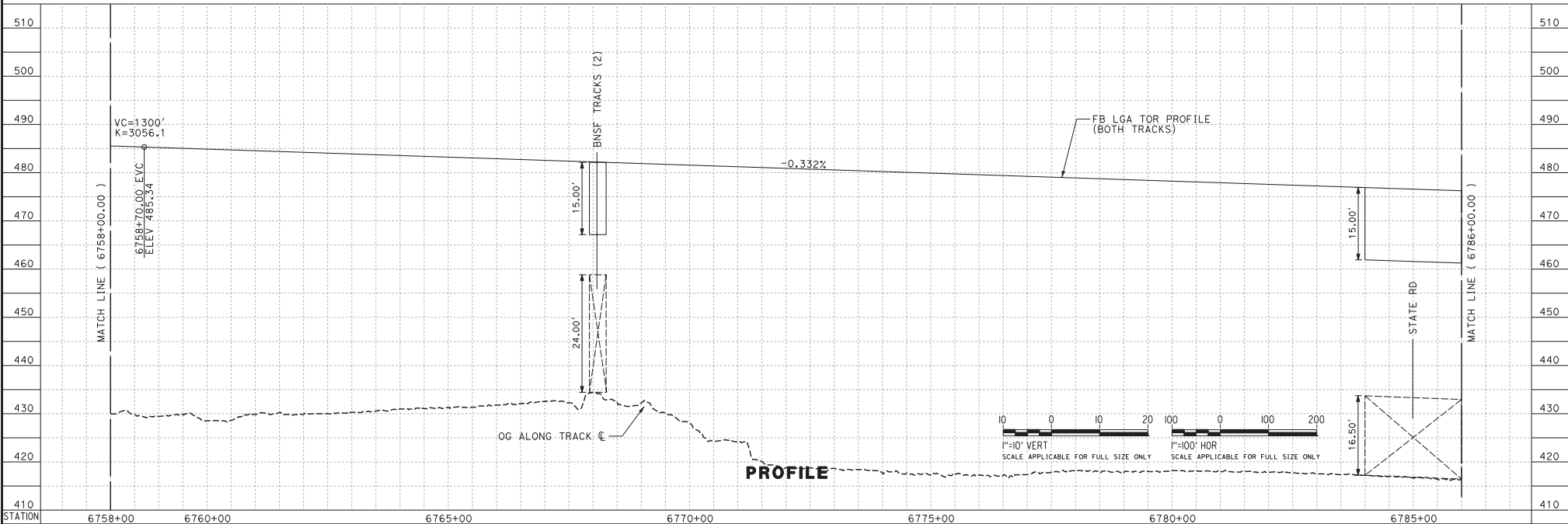
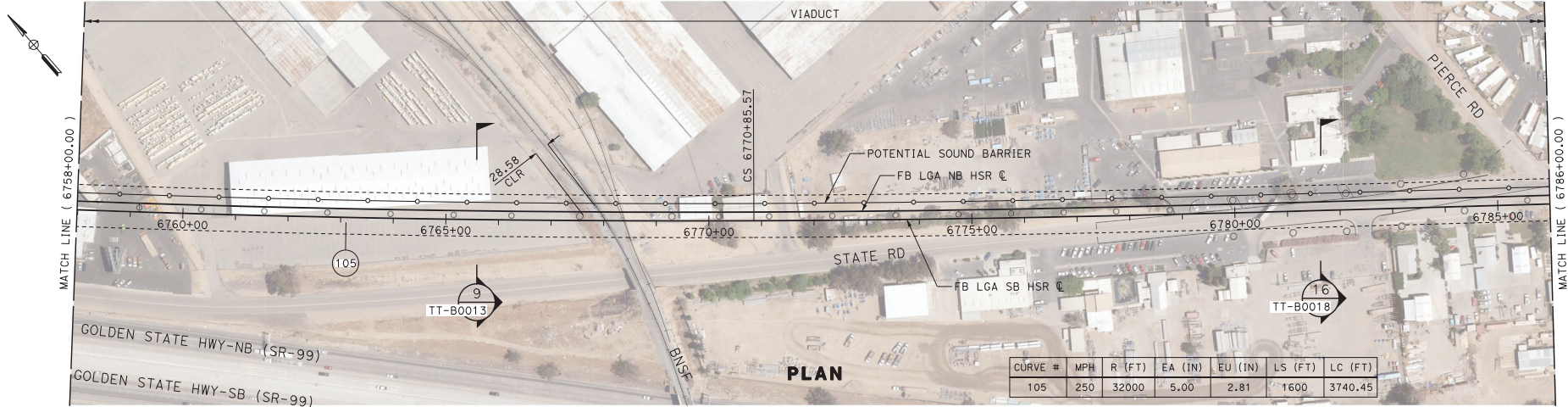
TYLIN INTERNATIONAL



CALIFORNIA HIGH-SPEED RAIL PROJECT  
FRESNO TO BAKERSFIELD  
LOCALLY GENERATED ALTERNATIVE  
TRACK GUIDEWAY  
STA 6730+00 TO 6758+00  
PROPOSED SOUND BARRIER

CONTRACT NO.  
HSR13-44  
DRAWING NO.  
TT-D1032  
SCALE  
AS SHOWN  
SHEET NO.

Projects\701206\N.BFSS\00 CAD Sheet Files\Sound Barriers\BFSSA-TT-D1033.dgn  
#PLOTDRVS#  
#PENTBLS#  
TYL\Trejo 12/21/2016 10:00:24 PM



REV	DATE	BY	CHK	APP	DESCRIPTION

DESIGNED BY J. TREJO
DRAWN BY N. OLINO
CHECKED BY E. WINTERS
IN CHARGE P. PIENTON
DATE 10/28/2016

RECORD SET  
PED DESIGN  
SUBMISSION

TYLIN INTERNATIONAL

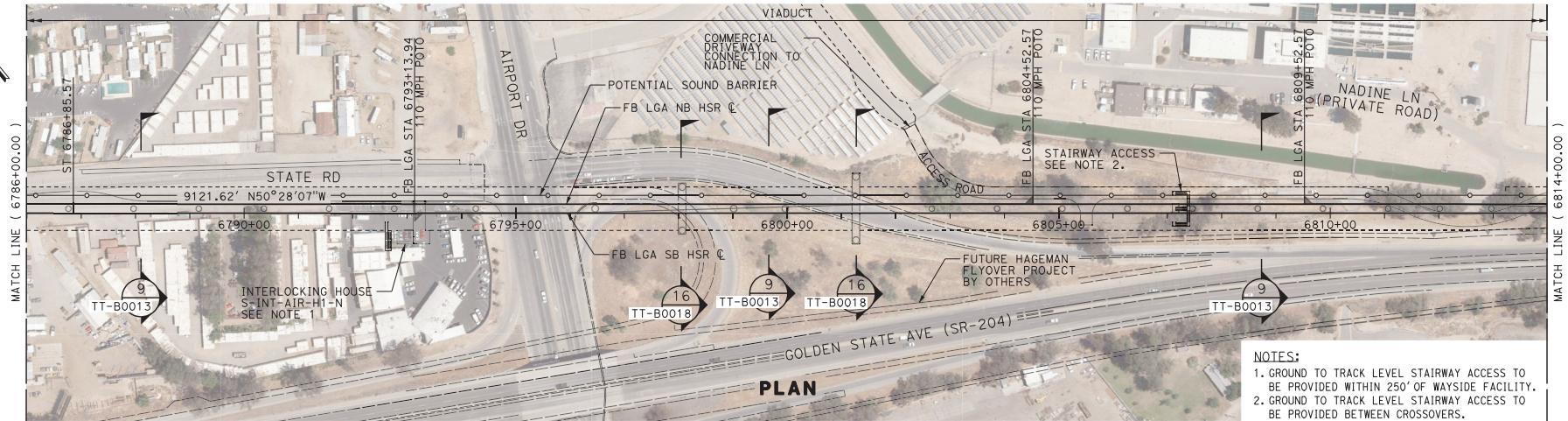


CALIFORNIA  
HIGH-SPEED RAIL AUTHORITY

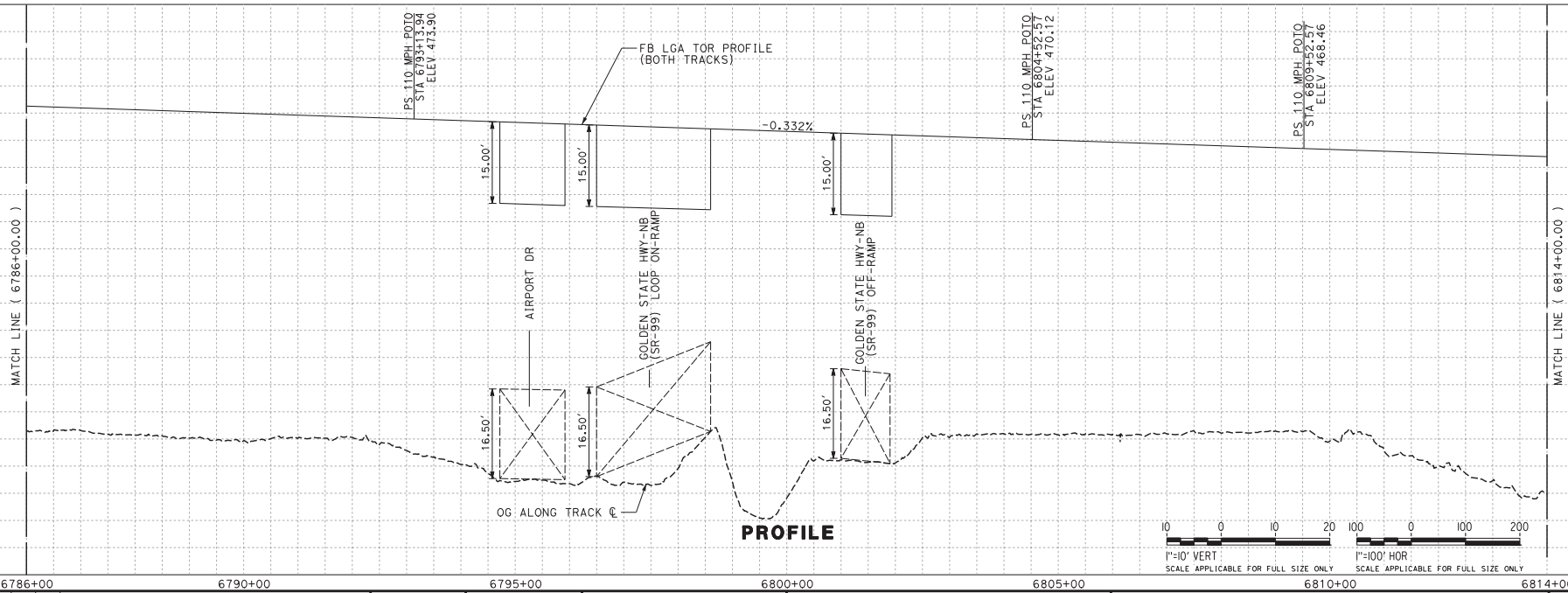
**CALIFORNIA HIGH-SPEED RAIL PROJECT**  
**FRESNO TO BAKERSFIELD**  
LOCALLY GENERATED ALTERNATIVE  
TRACK GUIDEWAY  
STA 6758+00 TO 6786+00  
PROPOSED SOUND BARRIER

CONTRACT NO.  
HSR13-44  
DRAWING NO.  
TT-D1033  
SCALE  
AS SHOWN  
SHEET NO.

Projects\701206\N.BFSS\00 CAD Sheet Files\Sound Barriers\BFSSA-TT-D1034.dgn  
#P LDRVLS#  
#P ENTBL#  
TYL\jtrejo 12/21/2016 10:00:30 PM



- NOTES:**
1. GROUND TO TRACK LEVEL STAIRWAY ACCESS TO BE PROVIDED WITHIN 250' OF WAYSIDE FACILITY.
  2. GROUND TO TRACK LEVEL STAIRWAY ACCESS TO BE PROVIDED BETWEEN CROSSOVERS.



REV	DATE	BY	CHK	APP	DESCRIPTION

DESIGNED BY  
J. TREJO  
DRAWN BY  
N. OLINO  
CHECKED BY  
E. WINTERS  
IN CHARGE  
P. PIENTON  
DATE  
10/28/2016

**RECORD SET  
PED DESIGN  
SUBMISSION**

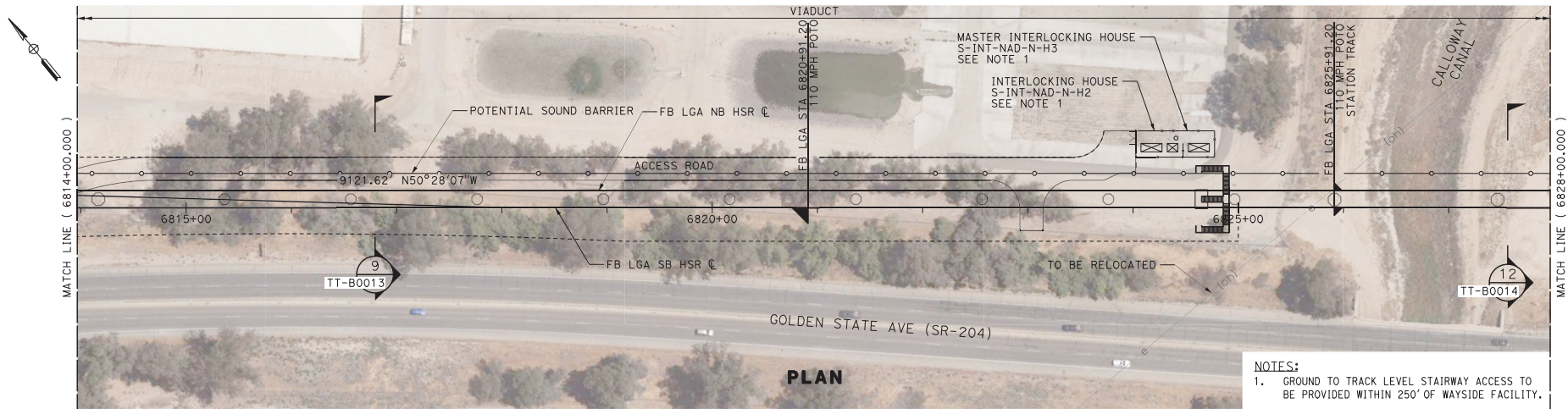
**TYLIN INTERNATIONAL**



**CALIFORNIA HIGH-SPEED RAIL PROJECT  
FRESNO TO BAKERSFIELD  
LOCALLY GENERATED ALTERNATIVE  
TRACK GUIDEWAY  
STA 6786+00 TO 6814+00  
PROPOSED SOUND BARRIER**

CONTRACT NO.  
HSR13-44  
DRAWING NO.  
TT-D1034  
SCALE  
AS SHOWN  
SHEET NO.

Projects\701206\N.BFSS\00 CAD Sheet Files\Sound Barrier\BFSSA-TT-D1035.dgn  
#P:LDIVS#  
#P:ENTBLS#  
TYL\JTrejo 12/21/2016 10:00:44 PM



- NOTES:**
- GROUND TO TRACK LEVEL STAIRWAY ACCESS TO BE PROVIDED WITHIN 250' OF WAYSIDE FACILITY.



REV	DATE	BY	CHK	APP	DESCRIPTION

DESIGNED BY J. TREJO
DRAWN BY J. TREJO
CHECKED BY E. WINTERS
IN CHARGE P. PIENTON
DATE 10/28/2016

**RECORD SET  
PED DESIGN  
SUBMISSION**

**TYLIN INTERNATIONAL**



**CALIFORNIA HIGH-SPEED RAIL PROJECT  
FRESNO TO BAKERSFIELD  
LOCALLY GENERATED ALTERNATIVE  
TRACK GUIDEWAY  
STA 6814+00 TO 6828+00  
PROPOSED SOUND BARRIER**

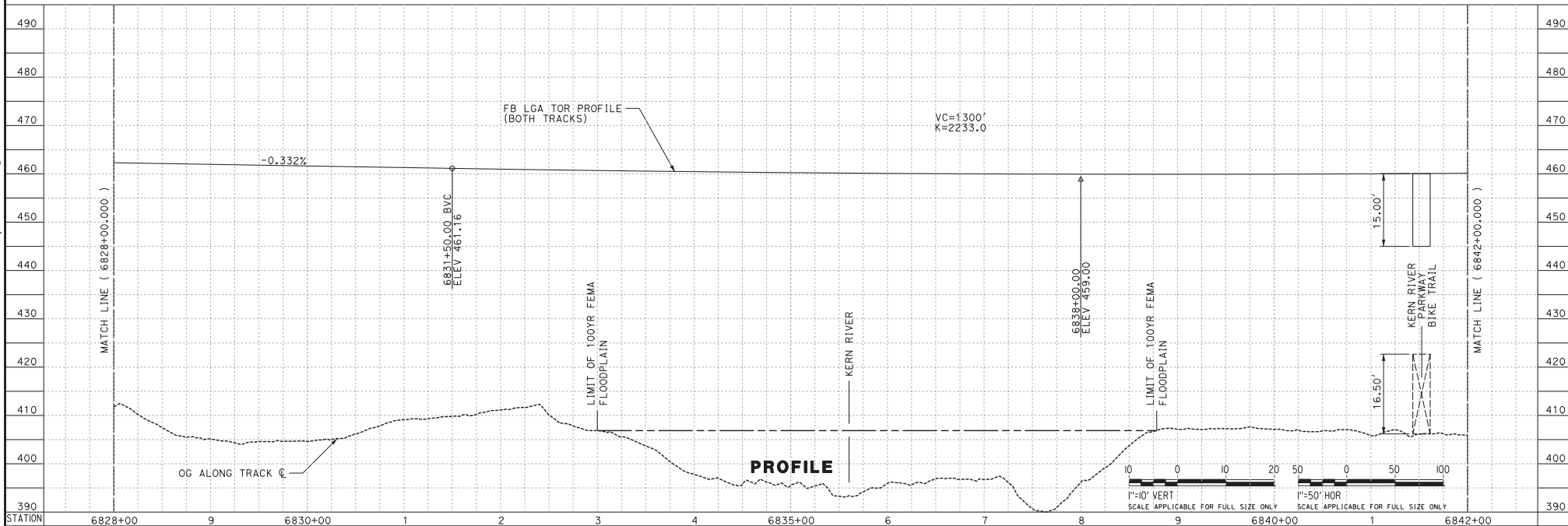
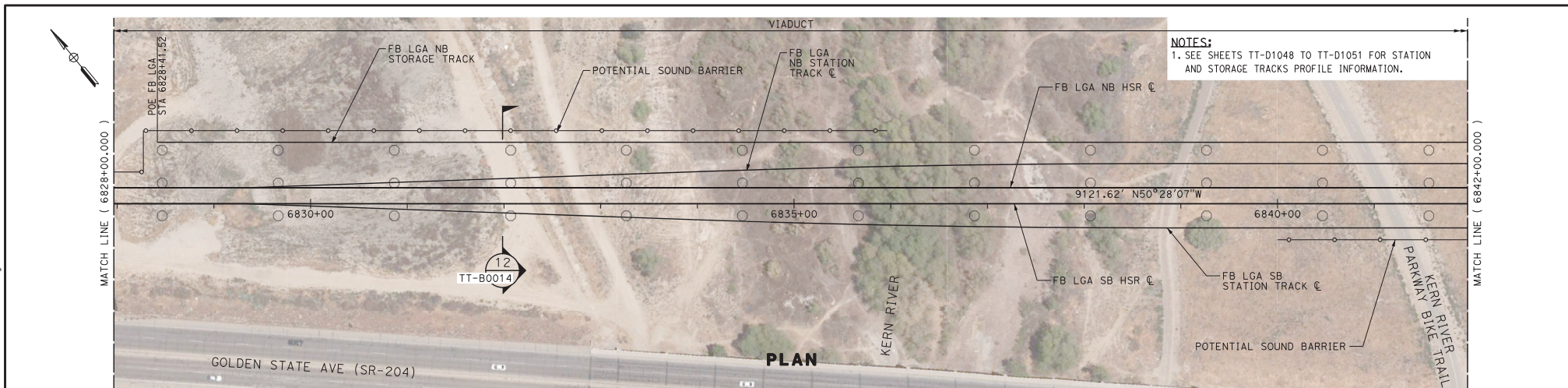
CONTRACT NO.  
HSR13-44  
DRAWING NO.  
TT-D1035  
SCALE  
AS SHOWN  
SHEET NO.

Projects\701206\N.BFSS\00 CAD Sheet Files\Sound Barrier\BFS-A-TT-D1036.dgn

#P:LDIVS#

#P:ENTBL#

TYL\JTrejo 12/21/2016 10:00:36 PM



REV	DATE	BY	CHK	APP	DESCRIPTION

DESIGNED BY  
J. TREJO  
DRAWN BY  
J. TREJO  
CHECKED BY  
E. WINTERS  
IN CHARGE  
P. PIENTON  
DATE  
10/28/2016

RECORD SET  
PED DESIGN  
SUBMISSION

TYLIN INTERNATIONAL



**CALIFORNIA HIGH-SPEED RAIL PROJECT**  
**FRESNO TO BAKERSFIELD**  
LOCALLY GENERATED ALTERNATIVE  
TRACK GUIDEWAY  
STA 6828+00 TO 6842+00  
PROPOSED SOUND BARRIER

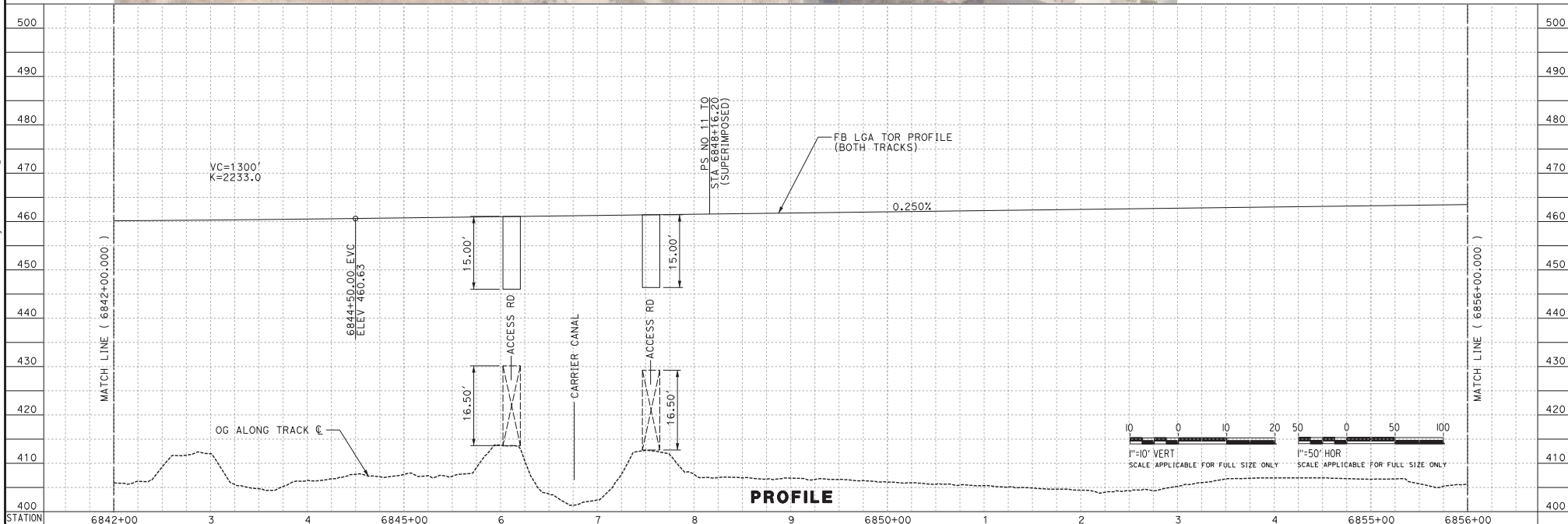
CONTRACT NO.  
HSR13-44  
DRAWING NO.  
TT-D1036  
SCALE  
AS SHOWN  
SHEET NO.

Projects\701206\N.BFSS\00 CAD Sheet Files\Sound Barrier\BFSSA-TT-D1037.dgn

#P.LDRVLS#

#PENTBL#

TYL\jtrejo 12/21/2016 10:01:01 PM



REV	DATE	BY	CHK	APP	DESCRIPTION

DESIGNED BY  
J. TREJO  
DRAWN BY  
J. TREJO  
CHECKED BY  
E. WINTERS  
IN CHARGE  
P. PIENTON  
DATE  
10/28/2016

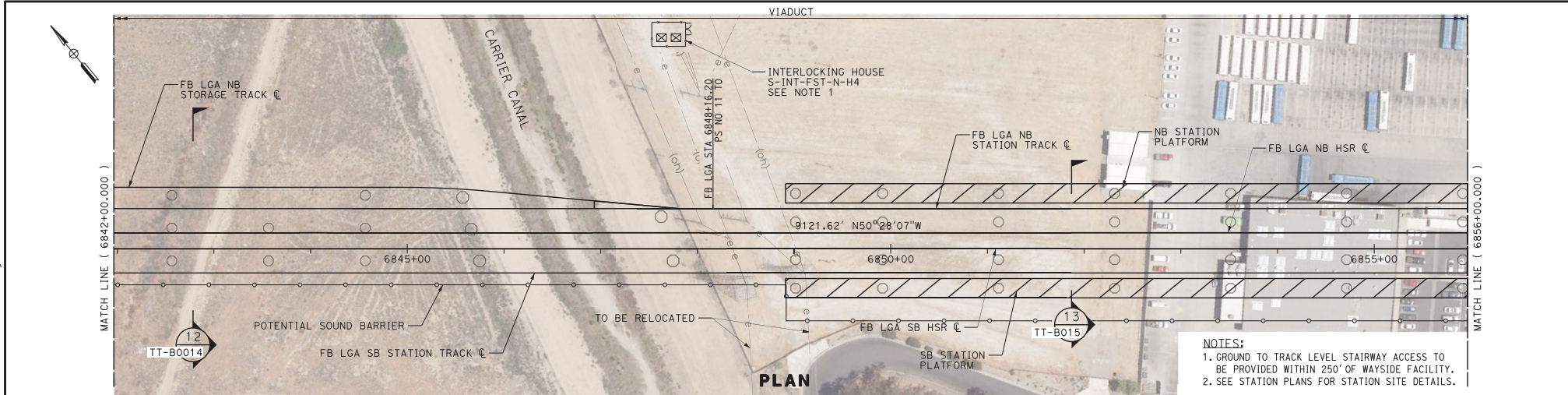
**RECORD SET  
PED DESIGN  
SUBMISSION**

**TYLIN INTERNATIONAL**



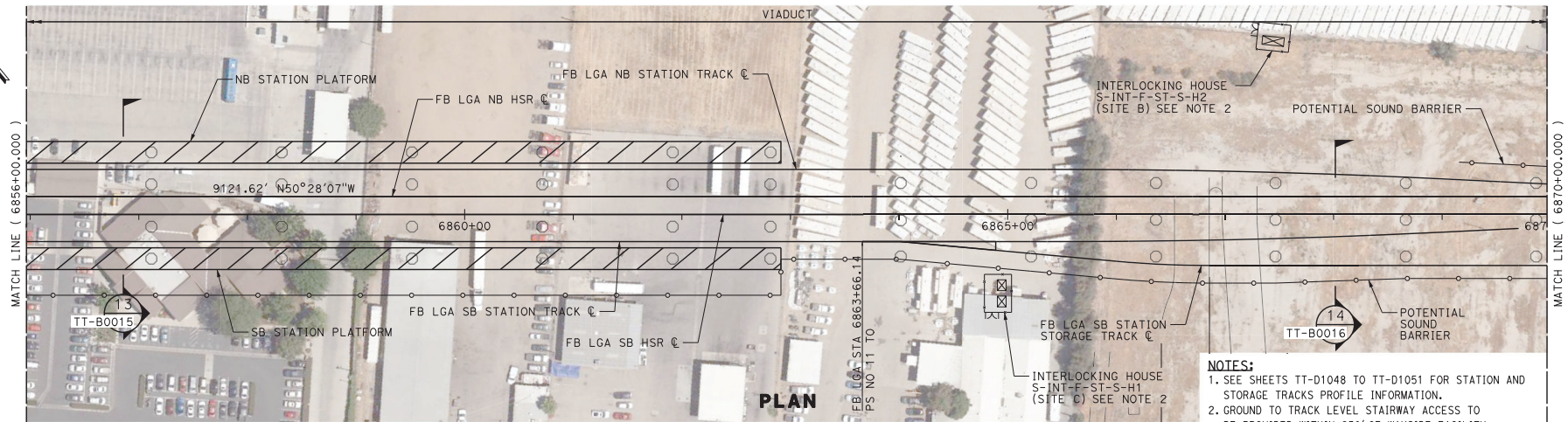
**CALIFORNIA HIGH-SPEED RAIL PROJECT  
FRESNO TO BAKERSFIELD**  
LOCALLY GENERATED ALTERNATIVE  
TRACK GUIDEWAY  
STA 6842+00 TO 6856+00  
PROPOSED SOUND BARRIER

CONTRACT NO.  
HSR13-44  
DRAWING NO.  
TT-D1037  
SCALE  
AS SHOWN  
SHEET NO.



**PLAN**

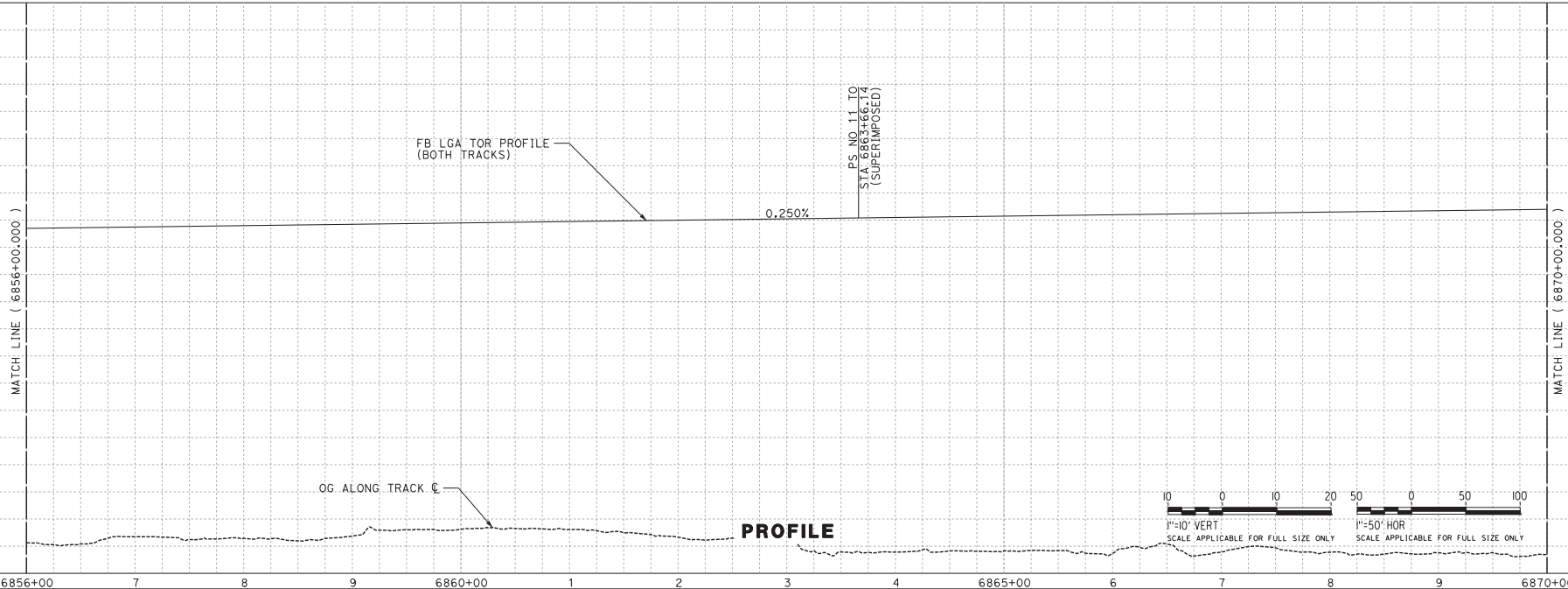
**NOTES:**  
1. GROUND TO TRACK LEVEL STAIRWAY ACCESS TO BE PROVIDED WITHIN 250' OF WAYSIDE FACILITY.  
2. SEE STATION PLANS FOR STATION SITE DETAILS.



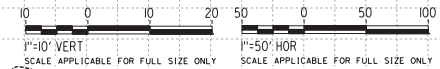
**PLAN**

**NOTES:**

1. SEE SHEETS TT-D1048 TO TT-D1051 FOR STATION AND STORAGE TRACKS PROFILE INFORMATION.
2. GROUND TO TRACK LEVEL STAIRWAY ACCESS TO BE PROVIDED WITHIN 250' OF WAYSIDE FACILITY.



**PROFILE**



REV	DATE	BY	CHK	APP	DESCRIPTION

DESIGNED BY  
**J. TREJO**  
DRAWN BY  
**J. TREJO**  
CHECKED BY  
**E. WINTERS**  
IN CHARGE  
**P. PIENTON**  
DATE  
**10/28/2016**

**RECORD SET  
PED DESIGN  
SUBMISSION**

**TYLIN INTERNATIONAL**

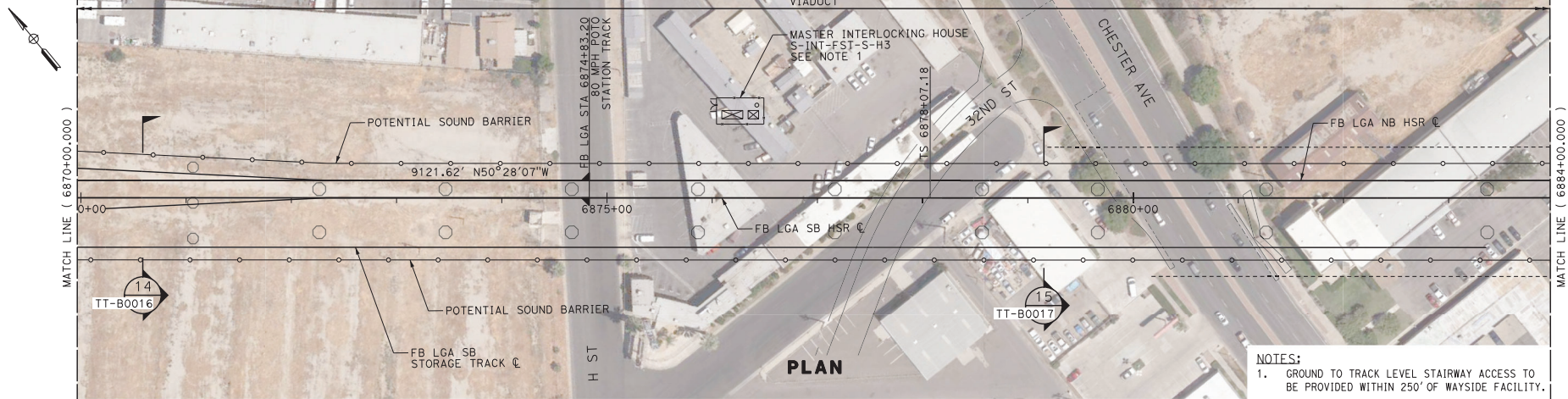


**CALIFORNIA**  
HIGH-SPEED RAIL AUTHORITY

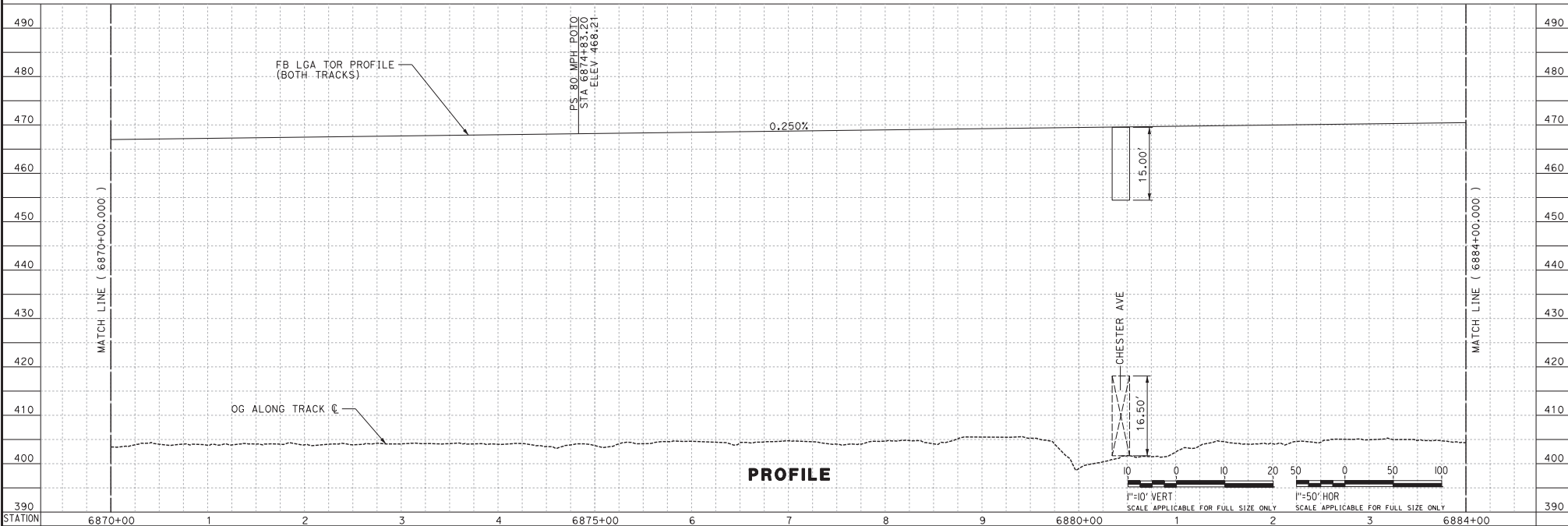
**CALIFORNIA HIGH-SPEED RAIL PROJECT  
FRESNO TO BAKERSFIELD**  
LOCALLY GENERATED ALTERNATIVE  
TRACK GUIDEWAY  
STA 6856+00 TO 6870+00  
PROPOSED SOUND BARRIER

CONTRACT NO.  
**HSR13-44**  
DRAWING NO.  
**TT-D1038**  
SCALE  
**AS SHOWN**  
SHEET NO.

Projects\701206\N.BFSS\00 CAD Sheet Files\Sound Barrier\BFS-A-TT-D1039.dgn  
#P LDRVLS#  
#P LDRVLS#  
12/21/2016 10:04:41 PM  
TYLIN\Trejo



NOTES:  
1. GROUND TO TRACK LEVEL STAIRWAY ACCESS TO BE PROVIDED WITHIN 250' OF WAYSIDE FACILITY.



REV	DATE	BY	CHK	APP	DESCRIPTION

DESIGNED BY J. TREJO
DRAWN BY J. TREJO
CHECKED BY E. WINTERS
IN CHARGE P. PIENTON
DATE 10/28/2016

RECORD SET  
PEDD DESIGN  
SUBMISSION

TYLIN INTERNATIONAL

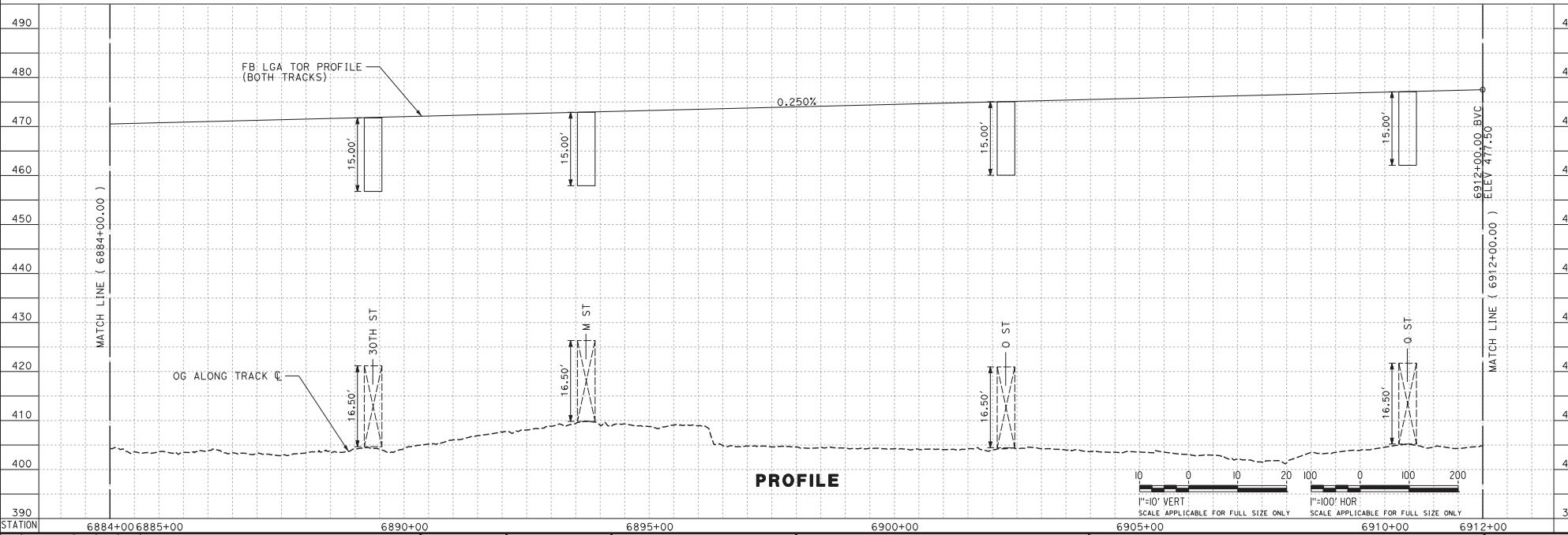
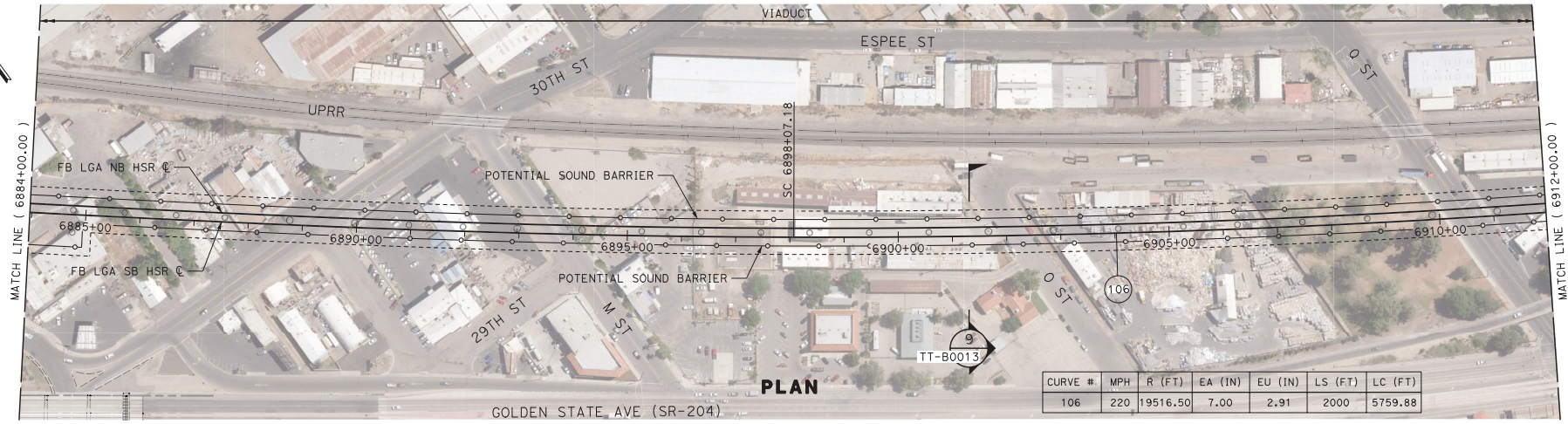


CALIFORNIA  
HIGH-SPEED RAIL AUTHORITY

**CALIFORNIA HIGH-SPEED RAIL PROJECT**  
**FRESNO TO BAKERSFIELD**  
LOCALLY GENERATED ALTERNATIVE  
TRACK GUIDEWAY  
STA 6870+00 TO 6884+00  
PROPOSED SOUND BARRIER

CONTRACT NO.  
HSR13-44  
DRAWING NO.  
TT-D1039  
SCALE  
AS SHOWN  
SHEET NO.

Projects\701206\N.BFSS\00 CAD Sheet Files\Sound Barriers\BFSSA-TT-D1040.dgn  
#PENTBLS#  
#PENTBLS#  
12/21/2016 10:05:57 PM  
TYLIN\Trejo



REV	DATE	BY	CHK	APP	DESCRIPTION

DESIGNED BY J. TREJO
DRAWN BY J. TREJO
CHECKED BY E. WINTERS
IN CHARGE P. PENTON
DATE 10/28/2016

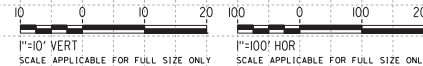
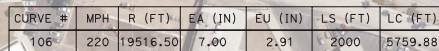
RECORD SET  
PEPD DESIGN  
SUBMISSION

TYLIN INTERNATIONAL

CALIFORNIA  
HIGH-SPEED RAIL AUTHORITY

CALIFORNIA HIGH-SPEED RAIL PROJECT  
FRESNO TO BAKERSFIELD  
LOCALLY GENERATED ALTERNATIVE  
TRACK GUIDEWAY  
STA 6884+00 TO 6912+00  
PROPOSED SOUND BARRIER

CONTRACT NO.  
HSR13-44  
DRAWING NO.  
TT-D1040  
SCALE  
AS SHOWN  
SHEET NO.



DESIGNED BY	J. TREJO
DRAWN BY	J. TREJO
CHECKED BY	E. WINTERS
IN CHARGE	P. PIENTON
DATE	10/28/2016

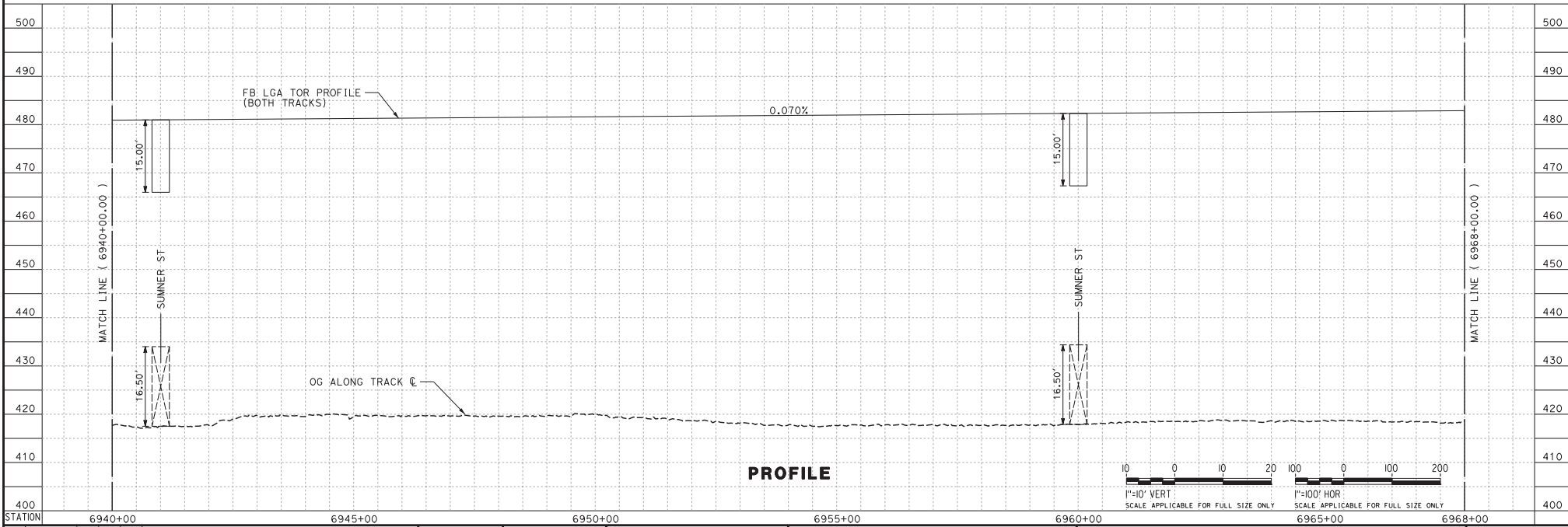
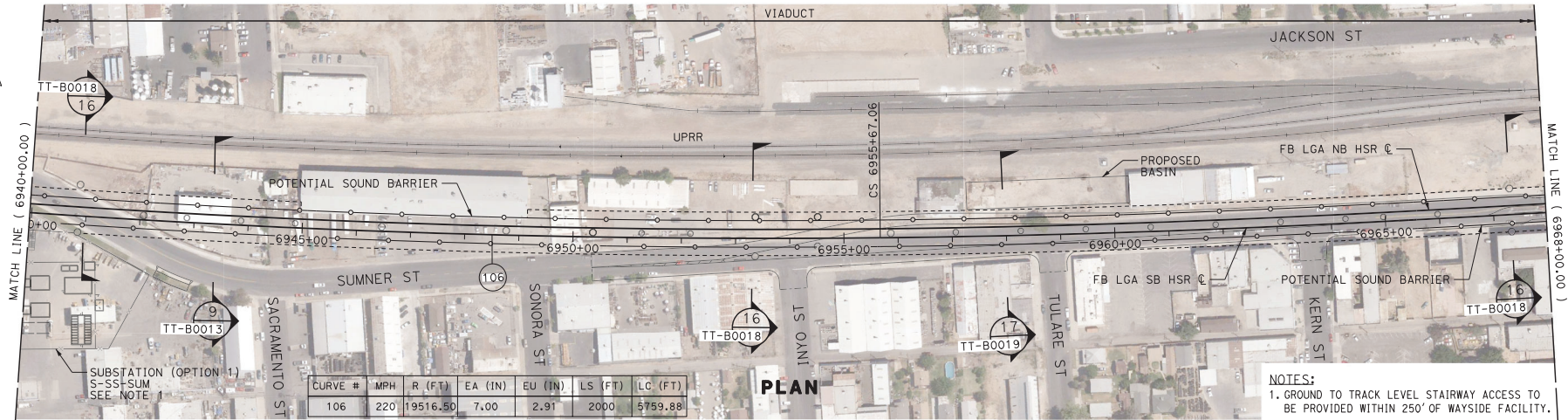
TYLINTERNATIONAL



**CALIFORNIA**  
HIGH-SPEED RAIL AUTHORITY

CONTRACT NO.	HSR13-44
DRAWING NO.	TT-D1041
SCALE	AS SHOWN
SHEET NO.	

Projects\701206\N.BFSS\00 CAD Sheet Files\Sound Barrier\BFSSA-TT-D1042.dgn  
#P:LTDRVLS#  
#P:ENTBLS#  
TYL\jtrejo 12/21/2016 10:10:11 PM



REV	DATE	BY	CHK	APP	DESCRIPTION

DESIGNED BY J. TREJO
DRAWN BY J. TREJO
CHECKED BY E. WINTERS
IN CHARGE P. PIENTON
DATE 10/28/2016

**RECORD SET  
PED DESIGN  
SUBMISSION**

**TYLIN INTERNATIONAL**



**CALIFORNIA HIGH-SPEED RAIL PROJECT  
FRESNO TO BAKERSFIELD**  
LOCALLY GENERATED ALTERNATIVE  
TRACK GUIDEWAY  
STA 6940+00 TO 6968+00  
PROPOSED SOUND BARRIER

CONTRACT NO.  
HSR13-44  
DRAWING NO.  
TT-D1042  
SCALE  
AS SHOWN  
SHEET NO.

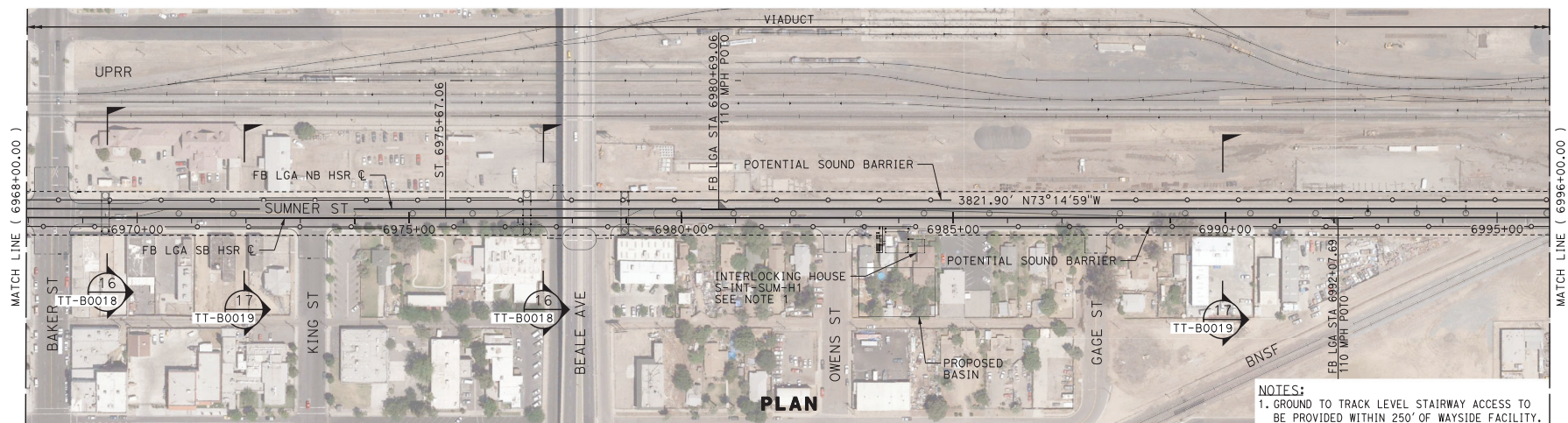
Projects\701206\N.BFSS\00 CAD Sheet Files\Sound Barrier\BSSA-TT-D1043.dgn

#P.LDRVCS#

#P.ENTBL#

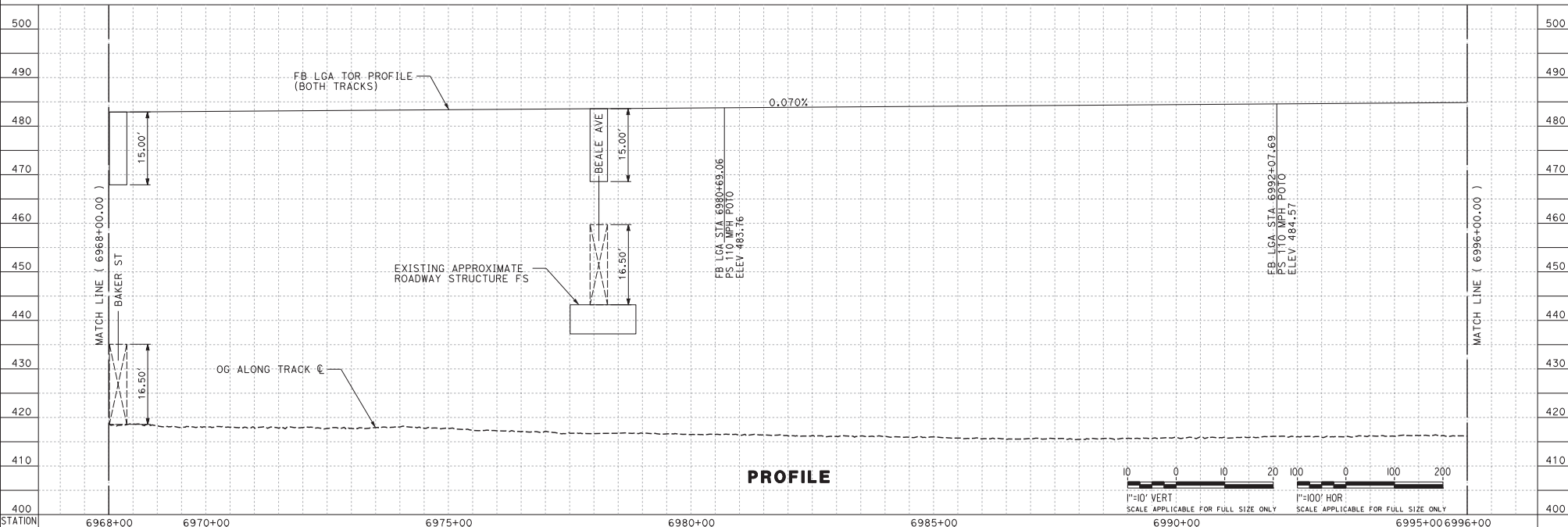
PM

TYL\jtrejo 12/21/2016 10:10:08

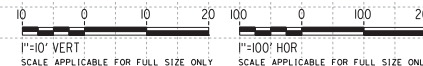


PLAN

NOTES:  
1. GROUND TO TRACK LEVEL STAIRWAY ACCESS TO BE PROVIDED WITHIN 250' OF WAYSIDE FACILITY.



PROFILE



REV	DATE	BY	CHK	APP	DESCRIPTION

DESIGNED BY  
J. TREJO  
DRAWN BY  
J. TREJO  
CHECKED BY  
E. WINTERS  
IN CHARGE  
P. PIENTON  
DATE  
10/28/2016

RECORD SET  
PED DESIGN  
SUBMISSION

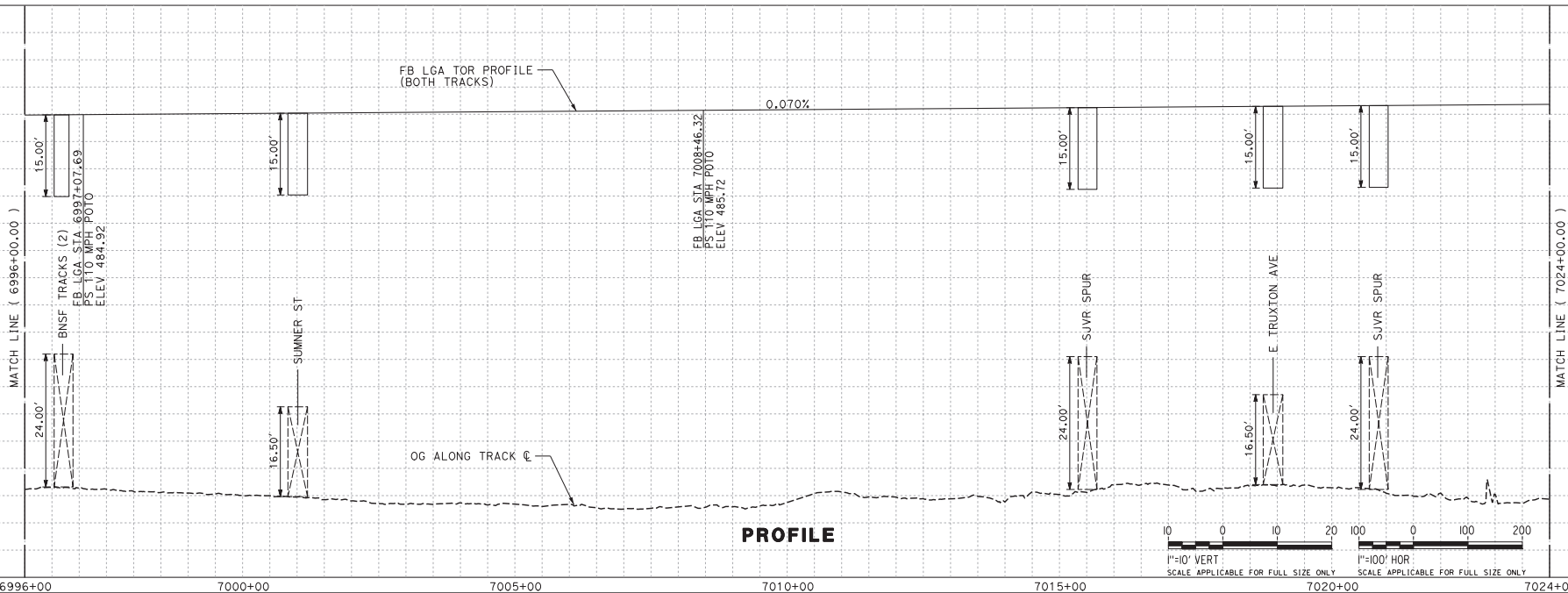
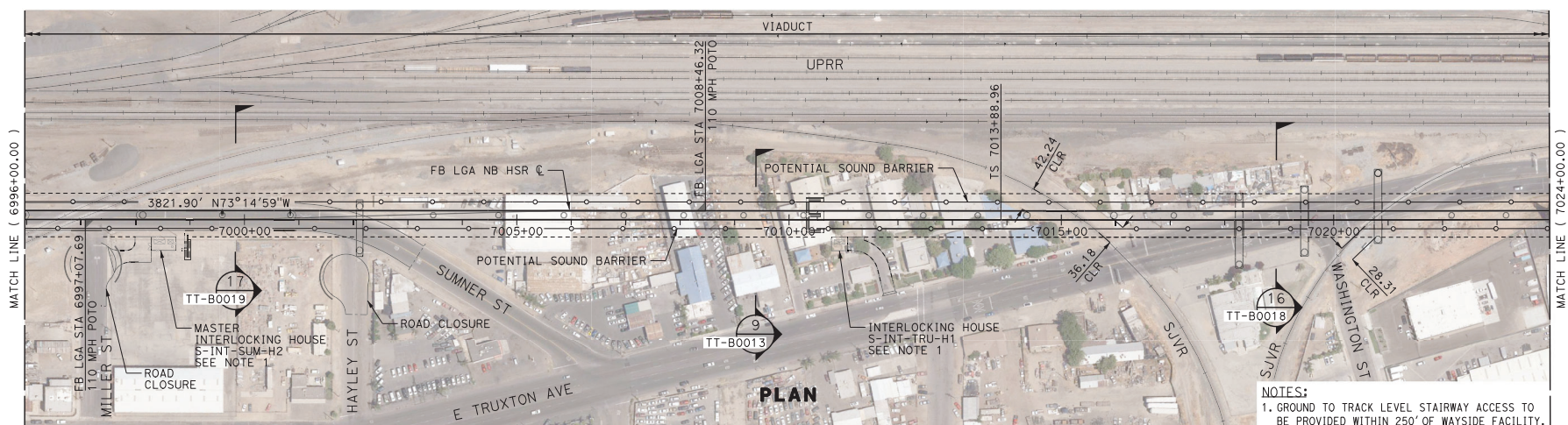
TYLIN INTERNATIONAL



CALIFORNIA  
HIGH-SPEED RAIL AUTHORITY

**CALIFORNIA HIGH-SPEED RAIL PROJECT**  
**FRESNO TO BAKERSFIELD**  
LOCALLY GENERATED ALTERNATIVE  
TRACK GUIDEWAY  
STA 6968+00 TO 6996+00  
PROPOSED SOUND BARRIER

CONTRACT NO.  
HSR13-44  
DRAWING NO.  
TT-D1043  
SCALE  
AS SHOWN  
SHEET NO.



REV	DATE	BY	CHK	APP	DESCRIPTION

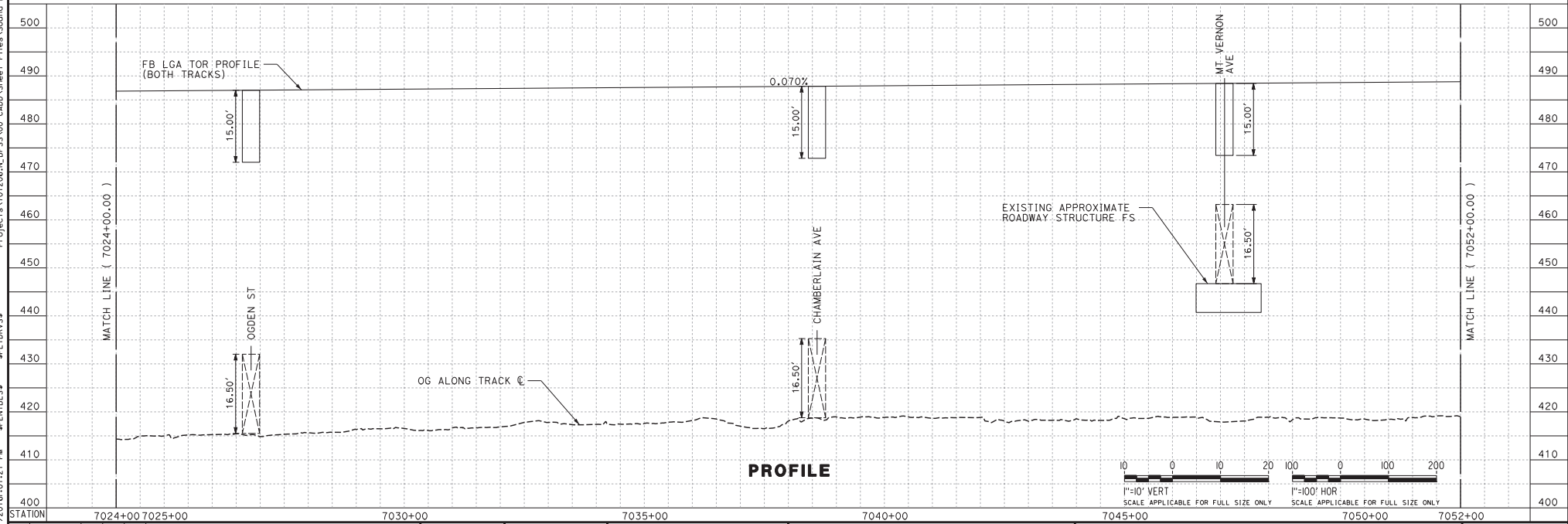
DESIGNED BY J. TREJO
DRAWN BY J. TREJO
CHECKED BY E. WINTERS
IN CHARGE P. PIENTON
DATE 10/28/2016

RECORD SET PEDD DESIGN SUBMISSION
TYLIN INTERNATIONAL



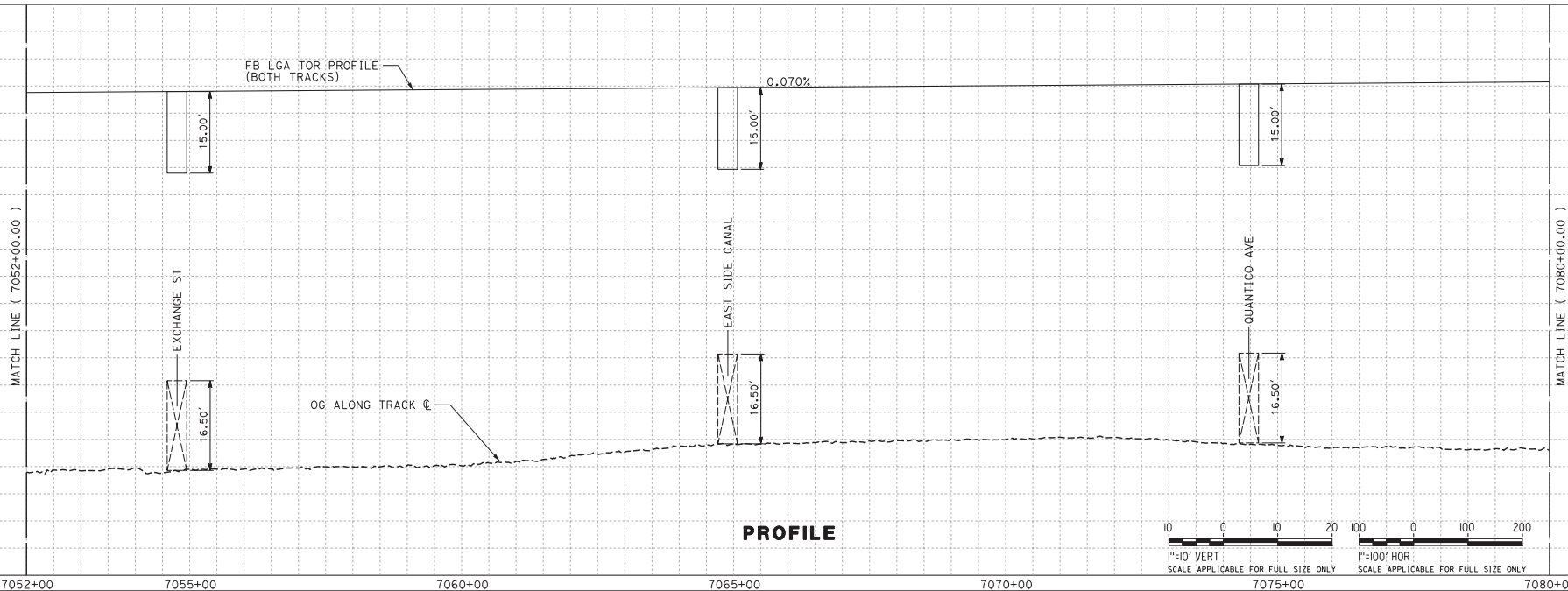
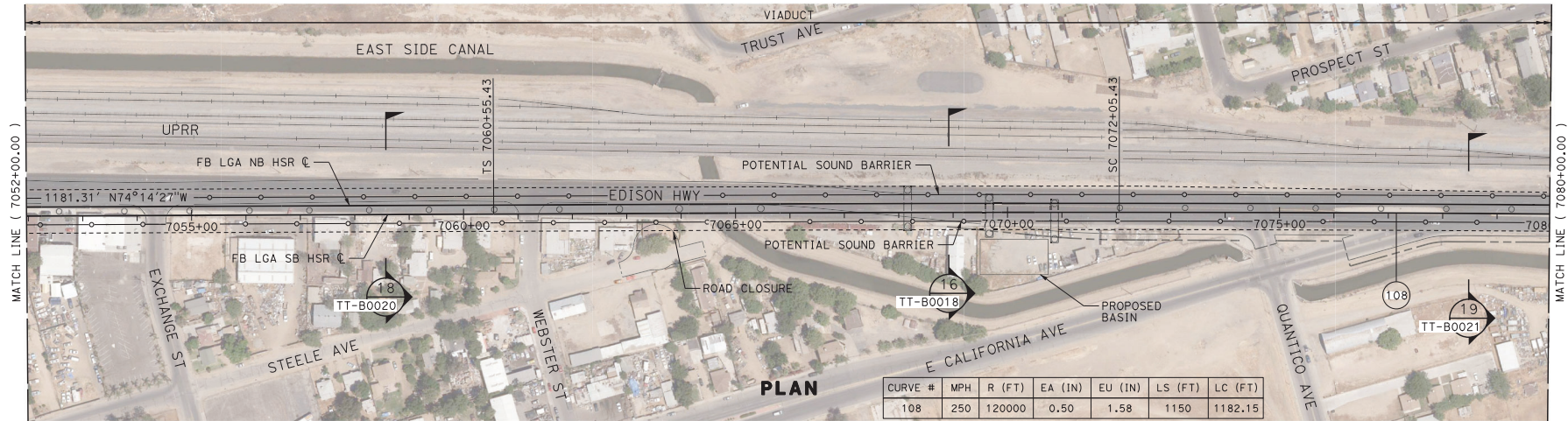
<b>CALIFORNIA HIGH-SPEED RAIL PROJECT</b> <b>FRESNO TO BAKERSFIELD</b> LOCALLY GENERATED ALTERNATIVE TRACK GUIDEWAY STA 6996+00 TO 7024+00 PROPOSED SOUND BARRIER	
CONTRACT NO. HSR13-44	DRAWING NO. TT-D1044
SCALE AS SHOWN	SHEET NO.

Projects\701206\N.BF55\00 CAD Sheet Files\Sound Barrier\BFS5A-TT-D1045.dgn  
#PLOTDRVS#  
#PENTBLS#  
TYL\jtrejo 12/21/2016 10:11:21 PM



<b>RECORD SET PED DESIGN SUBMISSION</b>					<b>TYLIN INTERNATIONAL</b>		<b>CALIFORNIA HIGH-SPEED RAIL PROJECT FRESNO TO BAKERSFIELD LOCALLY GENERATED ALTERNATIVE TRACK GUIDEWAY STA 7024+00 TO 7052+00 PROPOSED SOUND BARRIER</b>	<b>CONTRACT NO. HSR13-44 DRAWING NO. TT-D1045 SCALE AS SHOWN SHEET NO.</b>
DESIGNED BY J. TREJO	DRWN BY J. TREJO	CHECKED BY E. WINTERS	IN CHARGE P. PIENTON	DATE 10/28/2016				
REV	DATE	BY	CHK	APP	DESCRIPTION			

Projects\701206\NBFSS\00 CADD Sheet Files\Sound Barrier\BSSA-TT-D1046.dgn  
#PENTBLS#  
#PENTBLS#  
12/21/2016 10:00:36 PM  
TYL\jtrejo



REV	DATE	BY	CHK	APP	DESCRIPTION

DESIGNED BY  
J. TREJO  
DRAWN BY  
J. TREJO  
CHECKED BY  
E. WINTERS  
IN CHARGE  
P. PIENTON  
DATE  
10/28/2016

RECORD SET  
PEDD DESIGN  
SUBMISSION

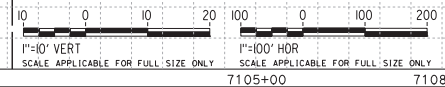
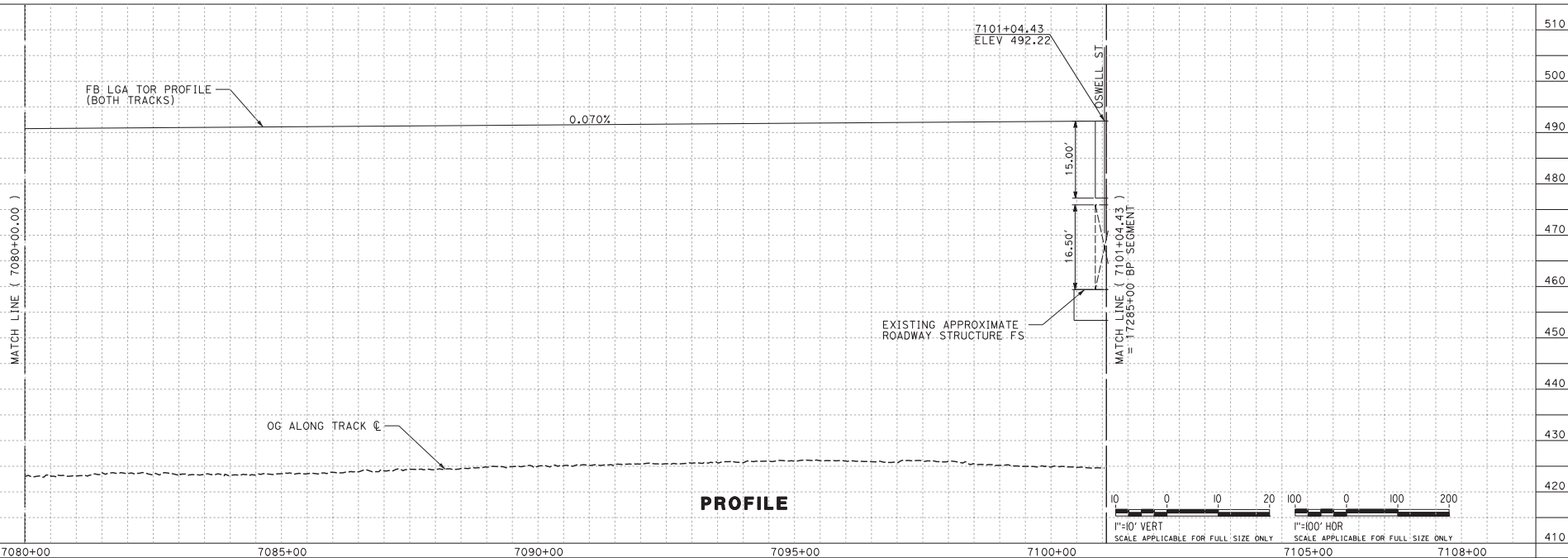
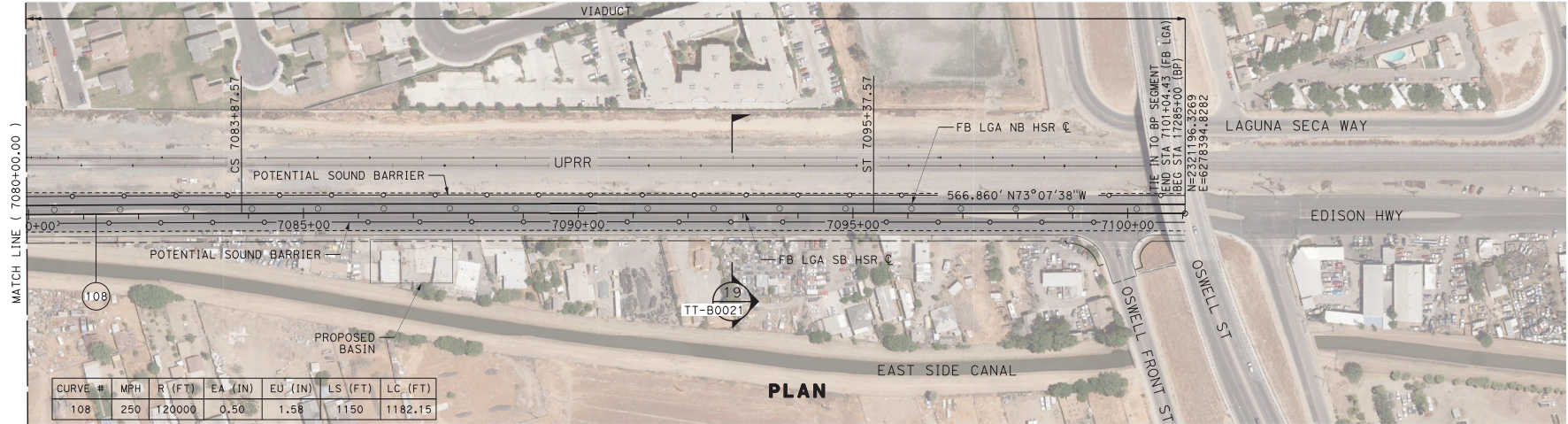
TYLIN INTERNATIONAL



CALIFORNIA  
HIGH-SPEED RAIL AUTHORITY

**CALIFORNIA HIGH-SPEED RAIL PROJECT**  
**FRESNO TO BAKERSFIELD**  
LOCALLY GENERATED ALTERNATIVE  
TRACK GUIDEWAY  
STA 7052+00 TO 7080+00  
PROPOSED SOUND BARRIER

CONTRACT NO.  
HSR13-44  
DRAWING NO.  
TT-D1046  
SCALE  
AS SHOWN  
SHEET NO.



REV	DATE	BY	CHK	APP	DESCRIPTION

DESIGNED BY J. TREJO
DRAWN BY J. TREJO
CHECKED BY E. WINTERS
IN CHARGE P. PENTION
DATE 10/28/2016

**RECORD SET  
PEDD DESIGN  
SUBMISSION**

**TYLIN INTERNATIONAL**



**CALIFORNIA HIGH-SPEED RAIL PROJECT**  
**FRESNO TO BAKERSFIELD**  
 LOCALLY GENERATED ALTERNATIVE  
 TRACK GUIDEWAY  
 STA 7080+00 TO 7101+04  
 PROPOSED SOUND BARRIER

CONTRACT NO.  
HSR13-44  
 DRAWING NO.  
TT-D1047  
 SCALE  
AS SHOWN  
 SHEET NO.