

**RECYCLED WATER SYSTEM REPORT
FOR
STONE CREEK
IN THE CITY OF SAN DIEGO**

June 14, 2006

Updated January 18, 2007

LIST OF FIGURES

Figure 1 Vicinity Map 2

BDS Engineering, Inc.

June 14, 2006

City of San Diego
Recycled Water Coordinator
600 B Street, Suite 1201
San Diego, CA 92101

Attention: Mr. Hossein Juybari, Recycled Water Coordinator

Subject: Recycled Water System Report for Stone Creek
In the City of San Diego

Introduction

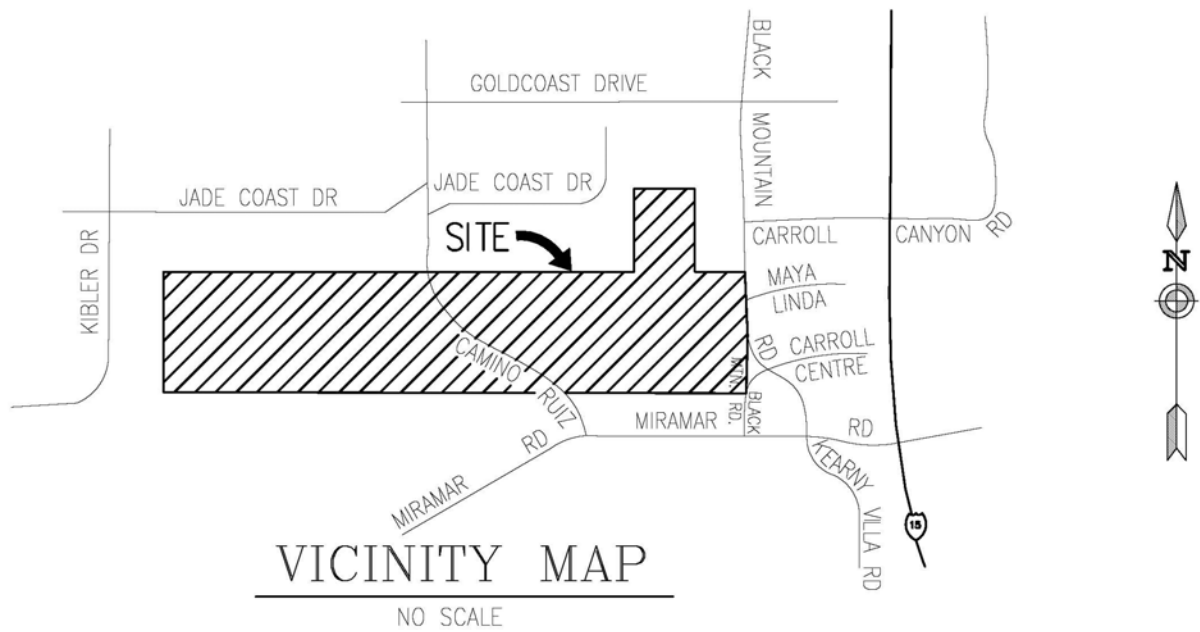
The project is located in the City of San Diego in the Mira Mesa Community. The project is located west of Black Mountain Road, north of Activity Road, east of Kibler Drive and south of Jade Coast Drive. Access to the project will be from Camino Ruiz and Black Mountain Road. Figure 1 within this report presents a location map of the Stone Creek project.

The development plan for the Stone Creek project includes 51 multi-family residences, 13 industrial lots, 4 office lots, 29 mixed-use lots and open space areas. Total project acreage is 288.52 acres and the proposed developed lots encompass 132.58 net acres. Building pads within the project range in elevation from a low of approximately 340 feet to a high of 425 feet.

Purpose of Study

Although, at this time, there is no existing recycled water system in the area, we are proposing to provide a recycled water infrastructure system, in this development, that ultimately can be connected to the future City mains. Therefore we cannot provide a study until such City system is designed and or constructed.

I. VICINITY MAP



Mr. Hossein Juybari

June 14, 2006

Page 3

Design Criteria and Water Demands

The design criteria that will be utilized in the analysis of the Stone Creek recycled water system will be accordance with the current City of San Diego Recycled Water System Guidelines. The current design guides were published in June 2001, Book 7 of the Water CIP Guidelines and Standards, to promote uniformity in design concepts, methodology, procedures, and construction materials on recycled water improvements.

Very truly yours,

BDS Engineering, Inc.
Civil Engineers

Thomas A. Jones

TAJ:vc

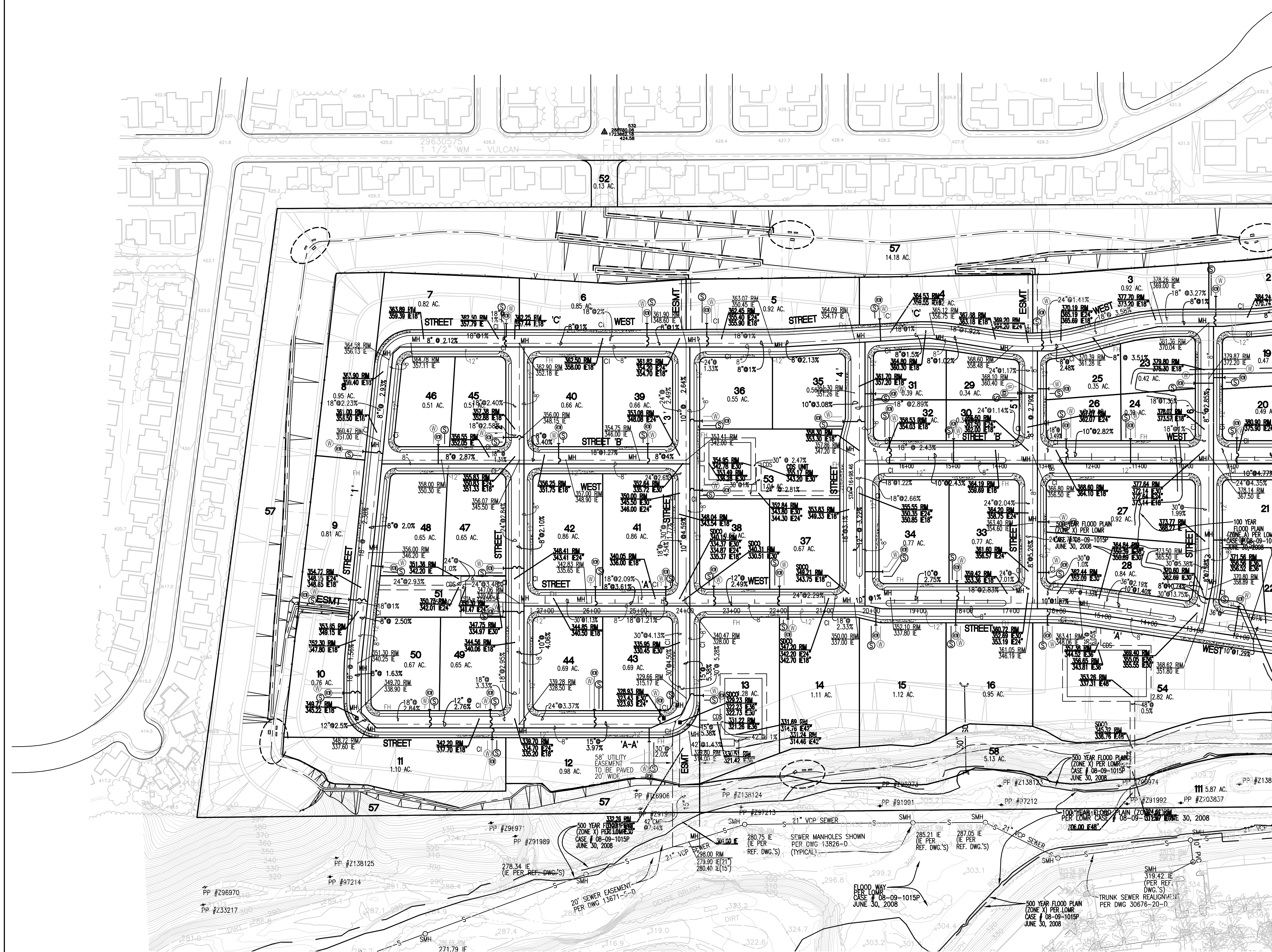
Attachments

STONE CREEK VESTING TENTATIVE MAP NO. _____ CITY OF SAN DIEGO

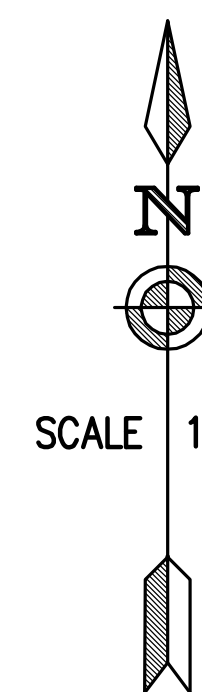
SHEET 1 OF 4 SHEETS

NOTE

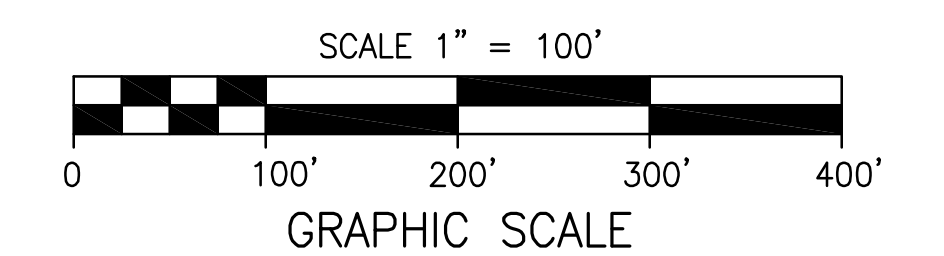
UNDERGROUND DETENTION SYSTEMS WEST OF CAMINO RUIZ SHALL BE DESIGNED FOR WATER QUALITY AND PEAK FLOOD MITIGATION.



SEE SHEET NO. 4
MATCH LINE



SCALE 1"=100'



| NO. | DATE | REVISION | BY |
|-----|-----------|-------------|-----|
| 6. | | | |
| 5. | | | |
| 4. | | | |
| 3. | 7/17/2006 | SUBMITTAL | BDS |
| 2. | 6/08/2006 | SUBMITTAL | BDS |
| 1. | 4/17/2006 | RESUBMITTAL | BDS |
| | 2/22/2005 | ORIGINAL | BDS |

STONE CREEK
EXIST. TOPOGRAPHY, EASEMENTS & SITE PLAN

ENGINEER OF WORK:
BDS ENGINEERING, INC.
CIVIL ENGINEERING
LAND SURVEYING
6859 Federal Boulevard
Lemon Grove, California 91945
(619) 582-4982

DWG. FILE: L:\PROJECTS\0423\Eng\Reclaimed Water Exhibit\RDW-1.dwg

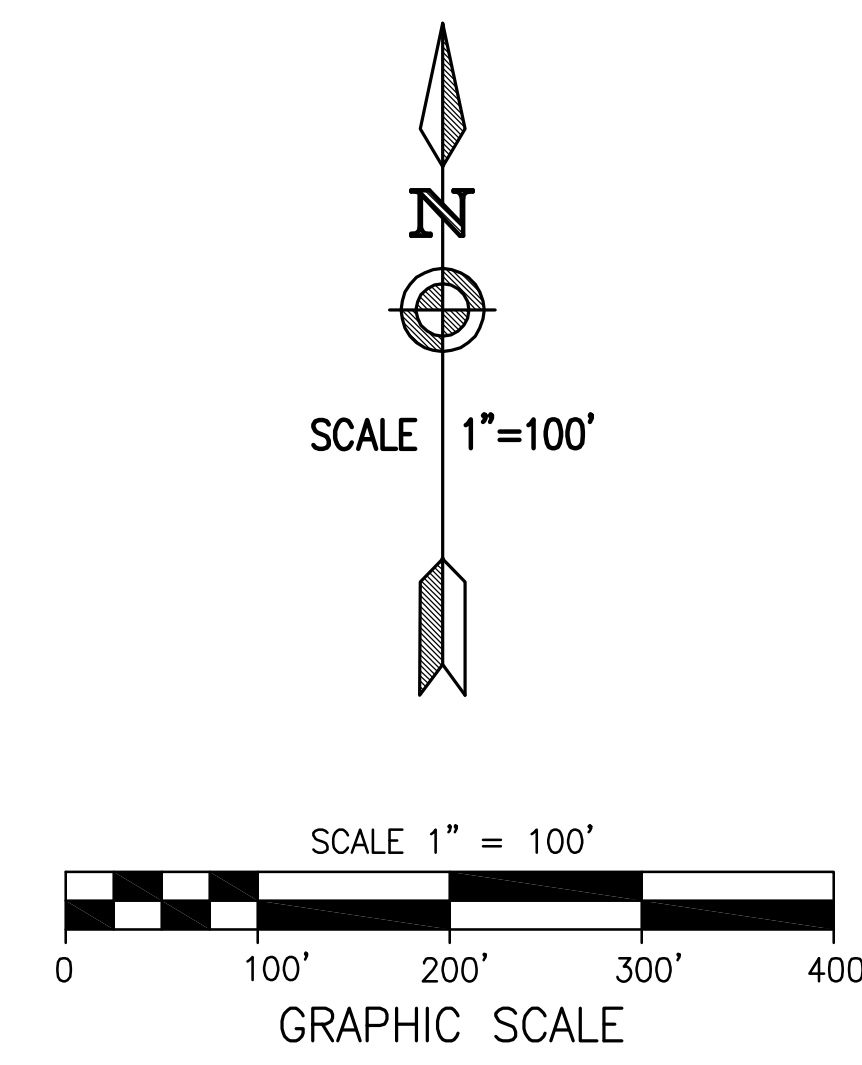
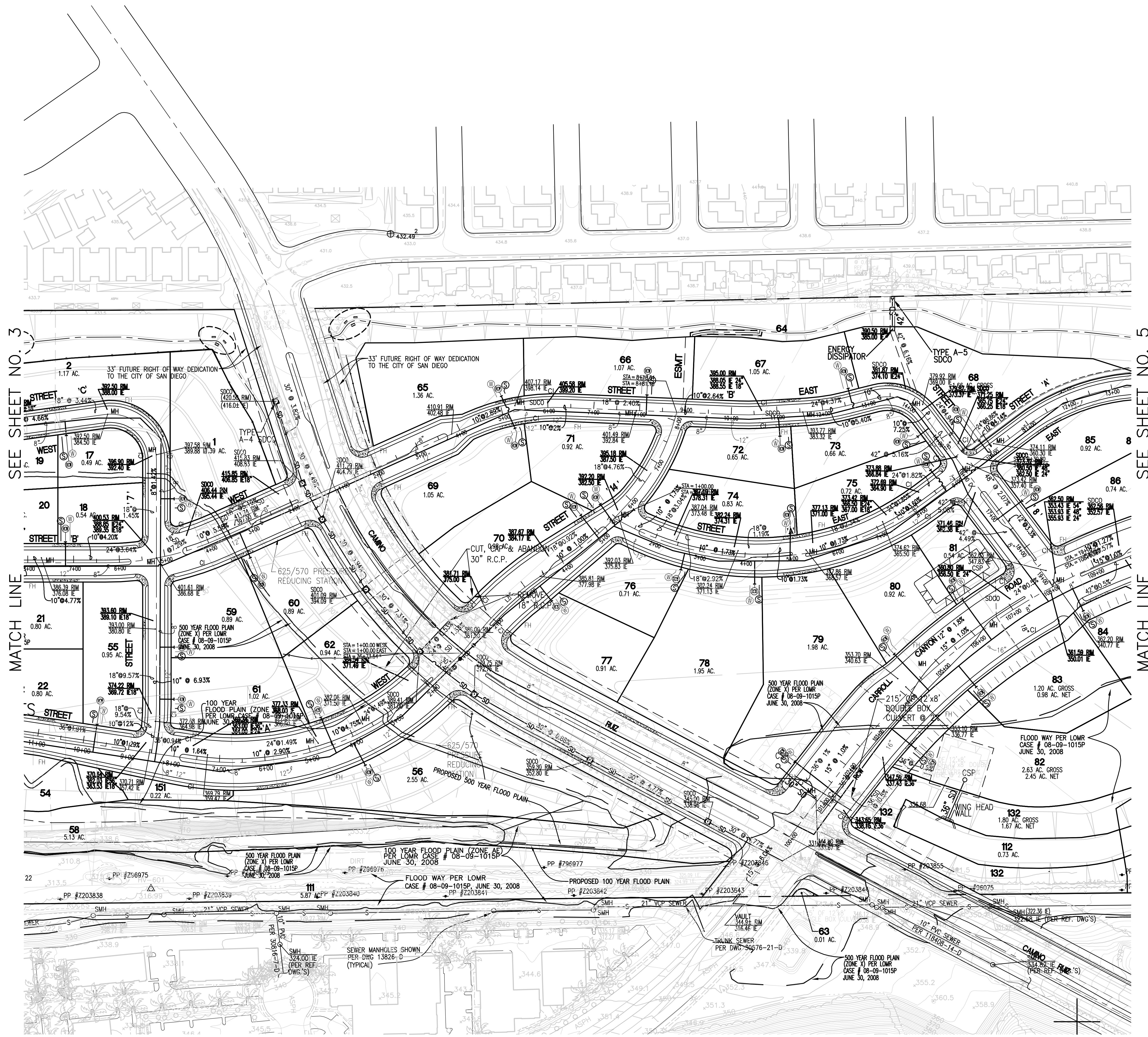
04-23
JOB NO.

W.O. # 42-2637

STONE CREEK
VESTING TENTATIVE MAP NO. _____
CITY OF SAN DIEGO

SHEET 2 OF 4 SHEETS

NOTE
UNDERGROUND DETENTION SYSTEMS WEST OF CAMINO
RUIZ SHALL BE DESIGNED FOR WATER QUALITY AND PEAK
FLOW MITIGATION.

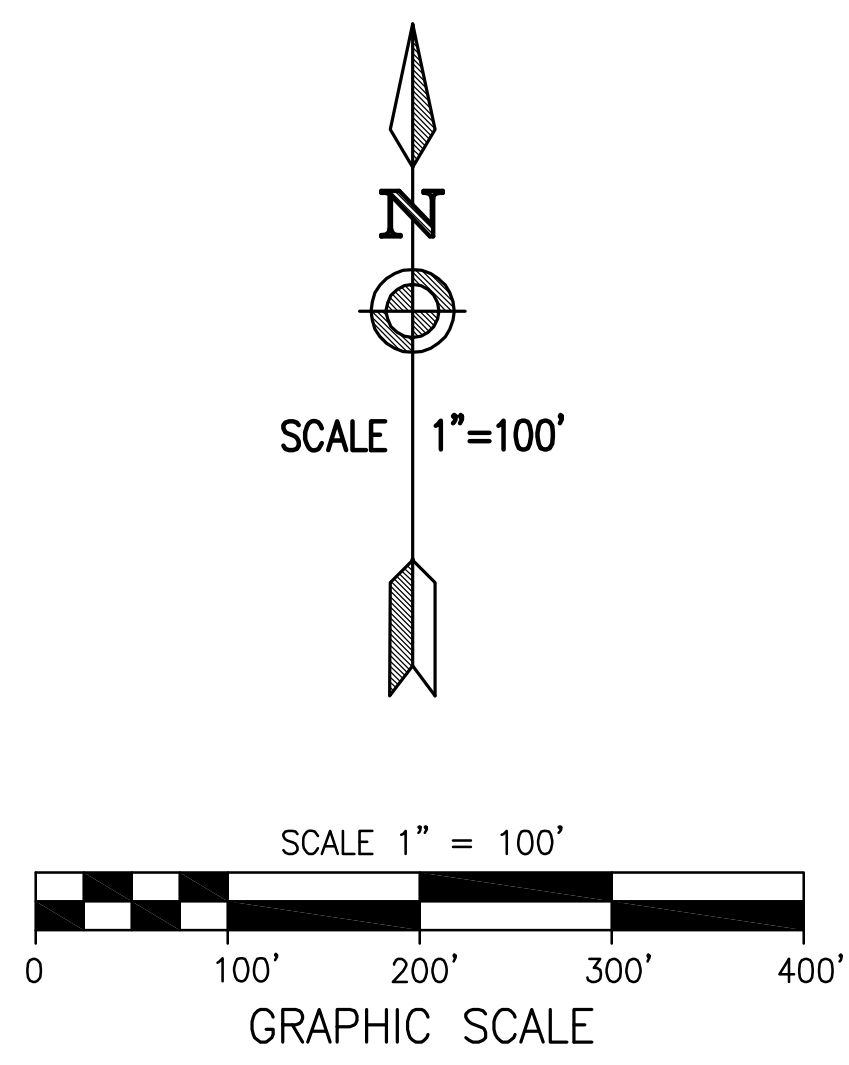
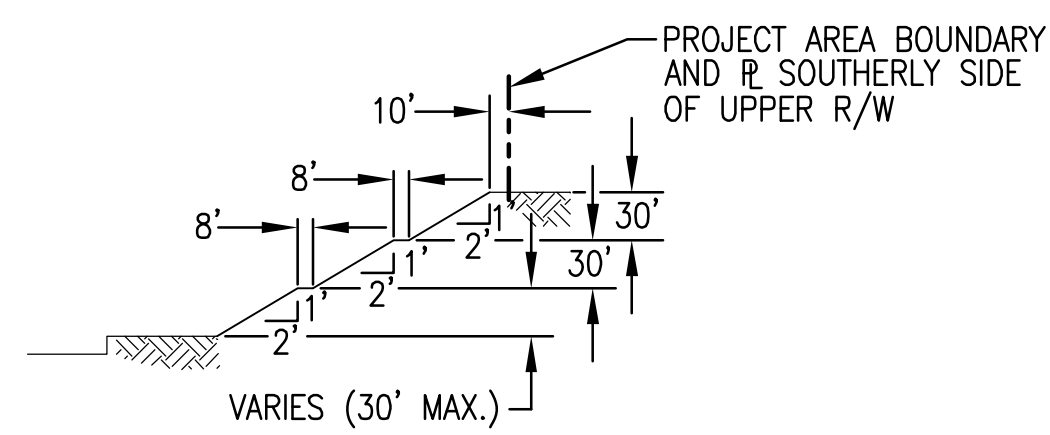
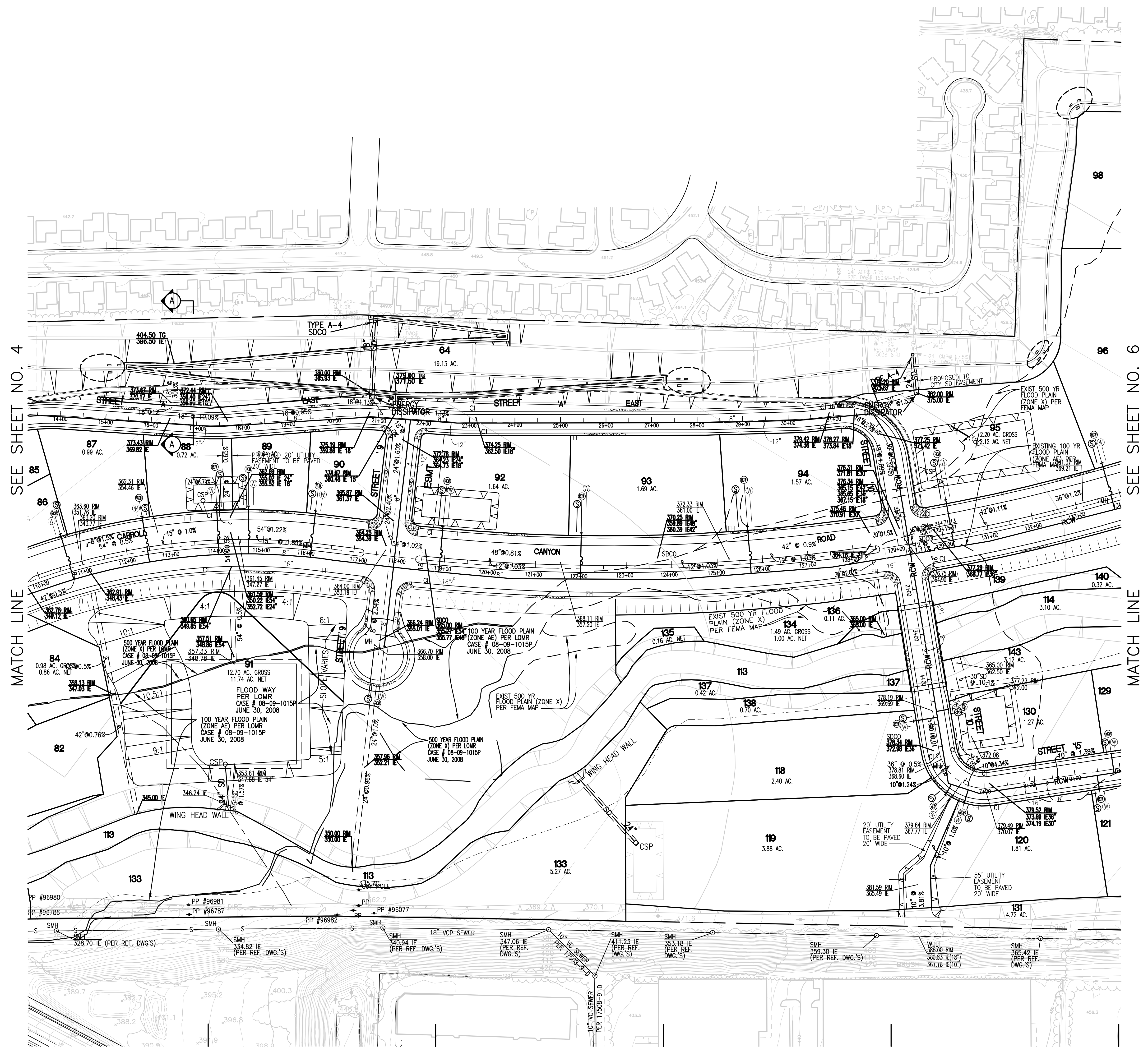


| NO. | DATE | REVISION | BY |
|-----|-----------|-------------|-----|
| 6. | | | |
| 5. | | | |
| 4. | | | |
| 3. | 7/17/2006 | SUBMITTAL | BDS |
| 2. | 6/08/2006 | SUBMITTAL | BDS |
| 1. | 4/17/2006 | RESUBMITTAL | BDS |
| | 2/22/2005 | ORIGINAL | BDS |

STONE CREEK
EXIST. TOPOGRAPHY, EASEMENTS & SITE PLAN
ENGINEER OF WORK:
BDS ENGINEERING, INC.
CIVIL ENGINEERING
LAND SURVEYING
6859 Federal Boulevard
Lemon Grove, California 91945
(619) 582-4982
DWG. FILE: L:\PROJECTS\0423\Eng\Reclaimed Water Exhibit\RDW-2.dwg
JOB NO. 04-23

STONE CREEK
VESTING TENTATIVE MAP NO. _____
CITY OF SAN DIEGO

SHEET 3 OF 4 SHEETS



| STONE CREEK EXIST. TOPOGRAPHY, EASEMENTS & SITE PLAN | | | |
|--|-----------|-------------|-----|
| ENGINEER OF WORK: BDS ENGINEERING, INC. CIVIL ENGINEERING LAND SURVEYING 6659 Federal Boulevard Lemon Grove, California 91945 (619) 582-4992 | | | |
| NO. | DATE | REVISION | BY |
| 6. | | | |
| 5. | | | |
| 4. | | | |
| 3. | 7/17/2006 | SUBMITTAL | BDS |
| 2. | 6/08/2006 | SUBMITTAL | BDS |
| 1. | 4/17/2006 | RESUBMITTAL | BDS |
| | 2/22/2005 | ORIGINAL | BDS |
| NO. | DATE | REVISION | BY |

SHEET 4 OF 4 SHEETS

