

JUL 22 2020

STATE CLEARINGHOUSE

NOTICE OF PUBLIC HEARING

The **Kern County Planning Commission** will hold a hearing on **Thursday, August 13, 2020, at 7:00 p.m.** (or as soon as possible thereafter as the matter may be heard) to consider the request listed below. Anyone wishing to give pertinent testimony may appear and be heard. Location of the hearing is:

Chambers of the Board of Supervisors
First Floor - Kern County Administrative Center
1115 Truxtun Avenue (corner of Truxtun and "N"), Bakersfield, California

Free parking is available in the parking structure located south of the Administrative Center. If parking fees are being charged for an event, inform the parking attendant you are attending the Planning Commission hearing, and you will not be charged.

- Applicant:** Golden Queen Mining Company, LLC by SESPE Consulting (PP20138)
- Location:** Approximately two (2) miles west of State Route (SR) 14, south of Silver Queen Road, an unincorporated area of Kern County; Supervisorial District 2 - Scrivner
- Proposal:** (a) **Modification of Conditional Use Permit Case No. 27, Map No. 196 to allow modifications including an increase in disturbance area and an extension of the life of operations (Section 19.100), in the A-1 (Limited Agriculture) and E (2 1/2) (Estate - 2 1/2 acres) Districts;** (b) **Modification of Condition Use Permit Case No. 41, Map No. 213 to allow modifications to include an increase in disturbance area and an extension of the life of operations (Section 19.100), in the A-1 (Limited Agriculture) District;** (c) **Modification of Conditional Use Permit Case No. 22, Map No. 214 to allow modifications to include an increase in disturbance area and an extension of the life of operations (Section 19.100), in the A (Exclusive Agriculture, A WE (Exclusive Agriculture - Wind Energy), and E (2 1/2) RS (Estate - 2 1/2 acres - Residential Suburban Combining) Districts.** The application and an Addendum to the Supplemental Environmental Impact Report (Soledad Mountain Project) are on file in the Office of the Kern County Planning and Natural Resources Department and are available for public review.

If you have comments about this proposal you are encouraged to send them in writing. We encourage the submittal of written comments by July 28, 2020, so that those comments may be considered when Staff formulates its recommendation; however, written comments may be submitted anytime prior to, or at, the public hearing. Correspondence should be sent to:

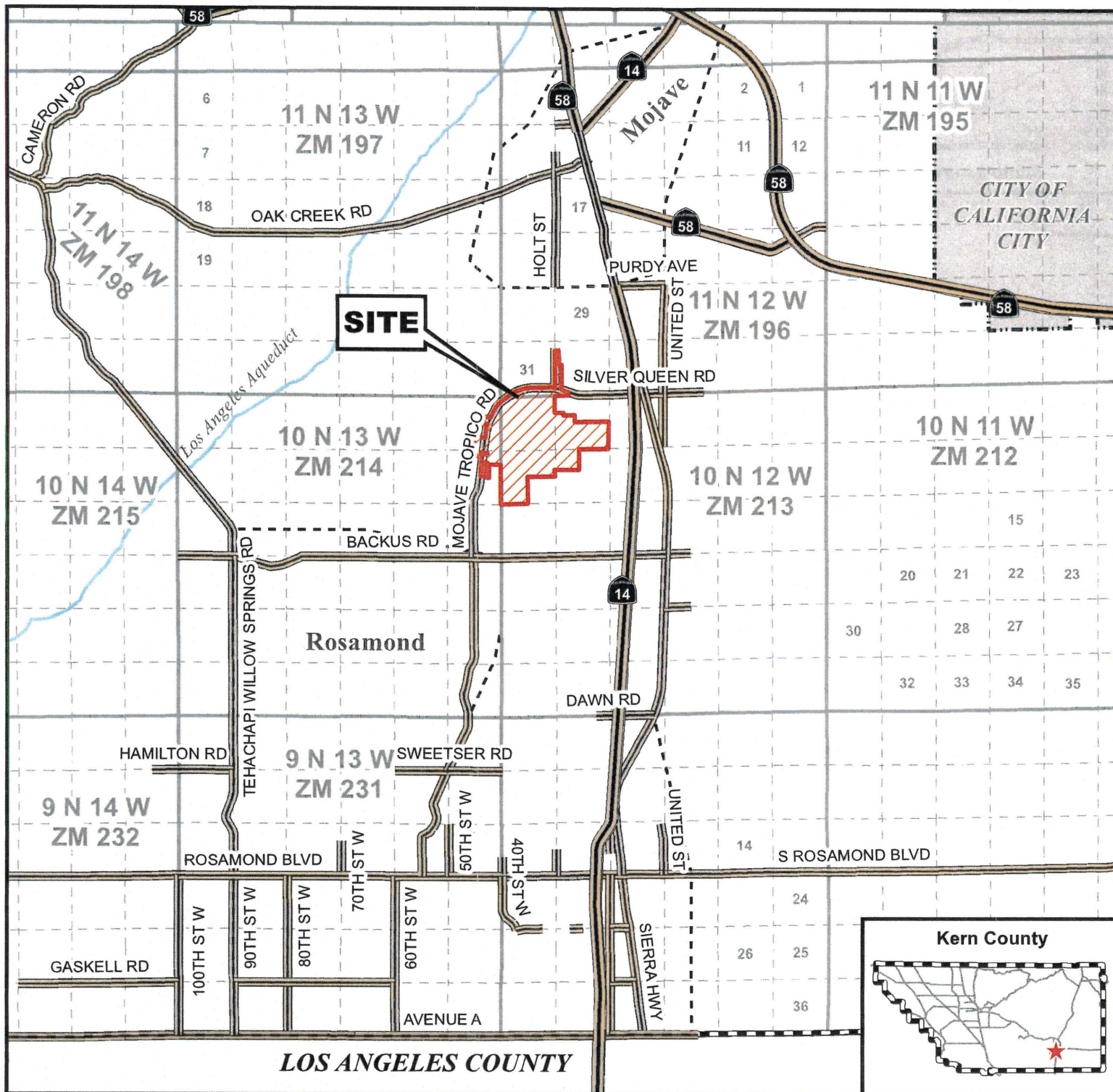
Kern County Planning and Natural Resources Department
2700 "M" Street, Suite 100
Bakersfield, CA 93301

Please make reference to the file number: **CUP #27, Map #196; CUP #41, Map #213; CUP #22, Map #214**

If you have questions regarding this project, telephone the Kern County Planning and Natural Resources Department and speak to:

Randall P. Cates, Planner 3 ((661) 862-8612)

If you challenge the action taken on this request in court, you may be limited to raising only those issues you or someone else raised at this public hearing, or in written correspondence delivered to the Planning and Natural Resources Department at, or prior to, the public hearing.



Modification of:
CUP 27, Map No. 196;
CUP 41, Map No. 213;
CUP 22, Map No. 214

Vicinity Map

Golden Queen Mining Company, LLC
 by: SESPE Consulting, Inc.

- SITE
- NAMED HWY
- STATE HWY
- Arterials
- Kern County Boundary
- Township/Range
- Sections
- Water Courses
- City Limits
- Unincorporated Cities

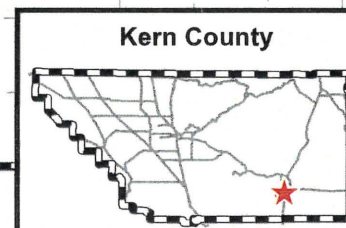
T11N/R12W - Sec. 31 & 32
 T10N/R13W - Sec. 1 & 12
 T10N/R12W - Sec. 5-8

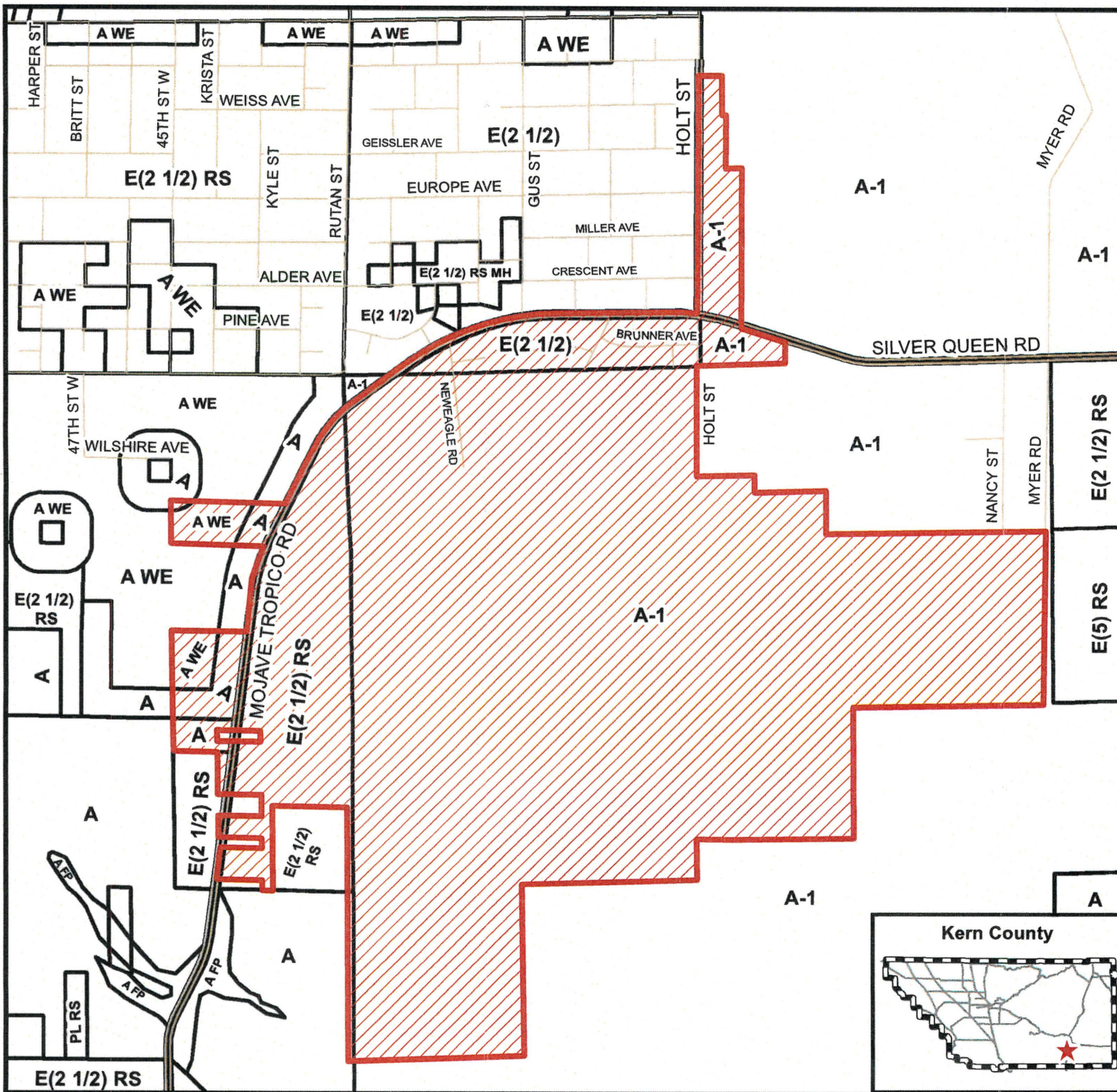
Created on: 7/6/2020

0 5,200 10,400 15,600 20,800 Feet



Kern County
Planning & Natural
Resources Department





Modification of:
CUP 27, Map No. 196;
CUP 41, Map No. 213;
CUP 22, Map No. 214

Existing Zoning Map

Golden Queen Mining Company, LLC
 by: **SESPE Consulting, Inc.**

Project Boundary

Arterials

Dirt Roads

KERN COUNTY ZONING DESIGNATIONS

- A - Exclusive Agriculture
- A-1 - Limited Agriculture
- E(2 1/2) - Estate (2.5 acres)
- E(5) - Estate (5 acres)
- PL - Platted Lands
- FP - Floodplain Combining
- MH - Mobilehome Combining
- RS - Residential Suburban Combining
- WE - Wind Energy Combining

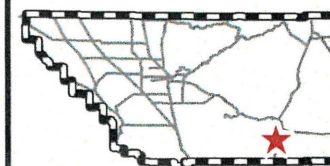
T11N/R12W - Sec. 31 & 32
 T10N/R13W - Sec. 1 & 12
 T10N/R12W- Sec. 5-8

Created on: 7/9/2020

0 800 1,600 2,400 3,200 Feet



Kern County



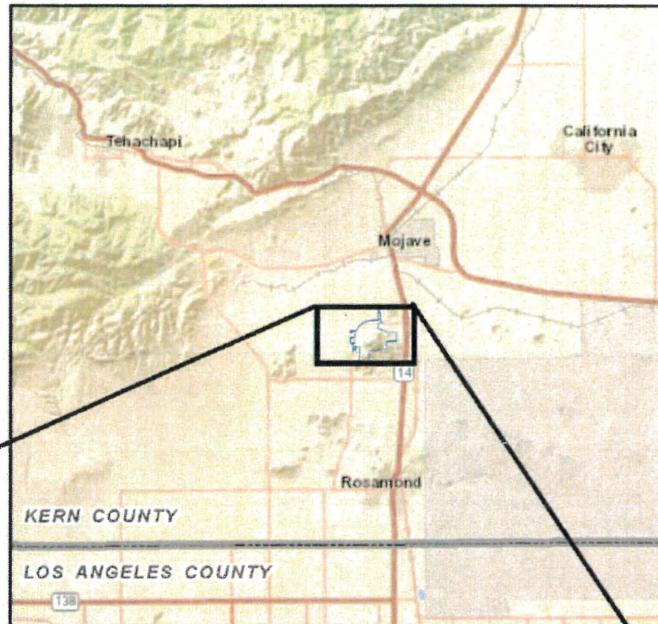
Kern County
Planning & Natural
Resources Department

CALIFORNIA

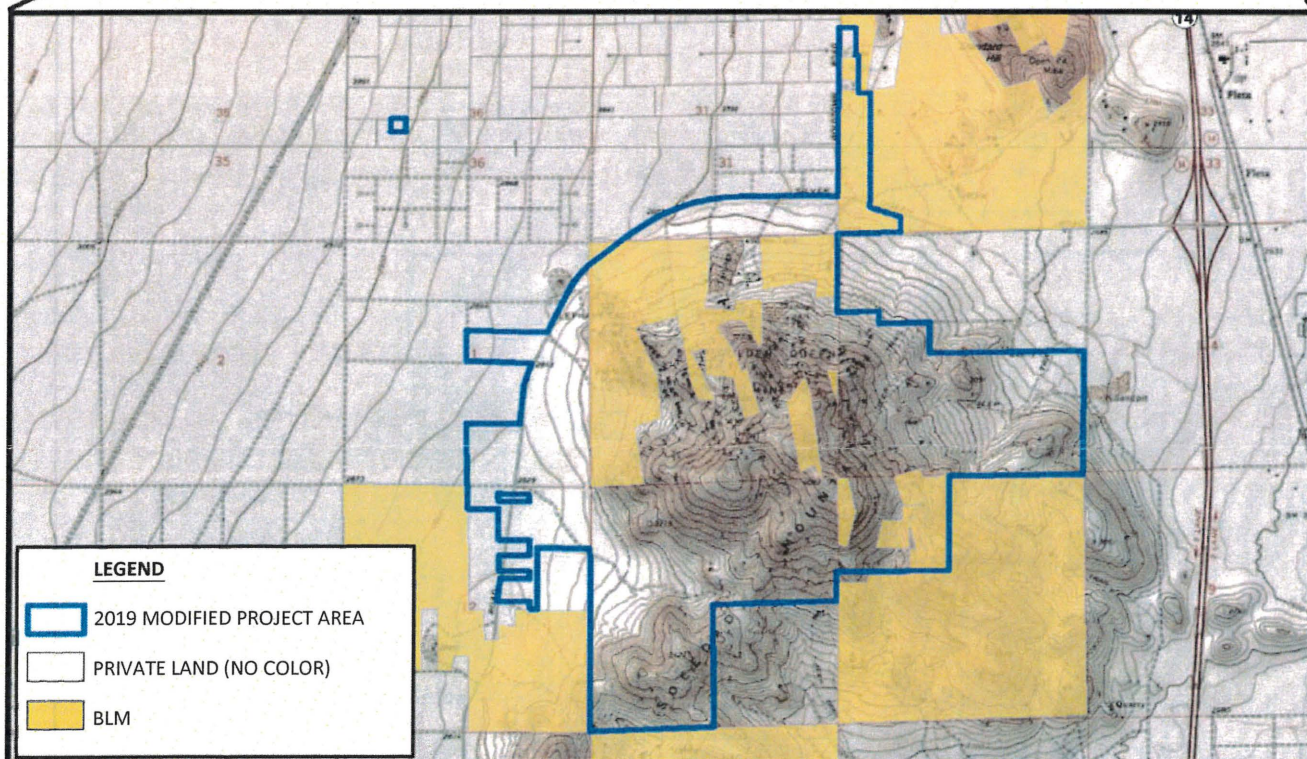


NOTE: MAPPING IS PROVIDED FOR ILLUSTRATIVE AND INFORMATIONAL PURPOSES ONLY. SEE MAPS OF THE PERMIT AREA AND PROPERTY BOUNDARIES PREPARED BY A CALIFORNIA-LICENSED PROFESSIONAL FOR LOCATION DETAILS.

PROJECT VICINITY

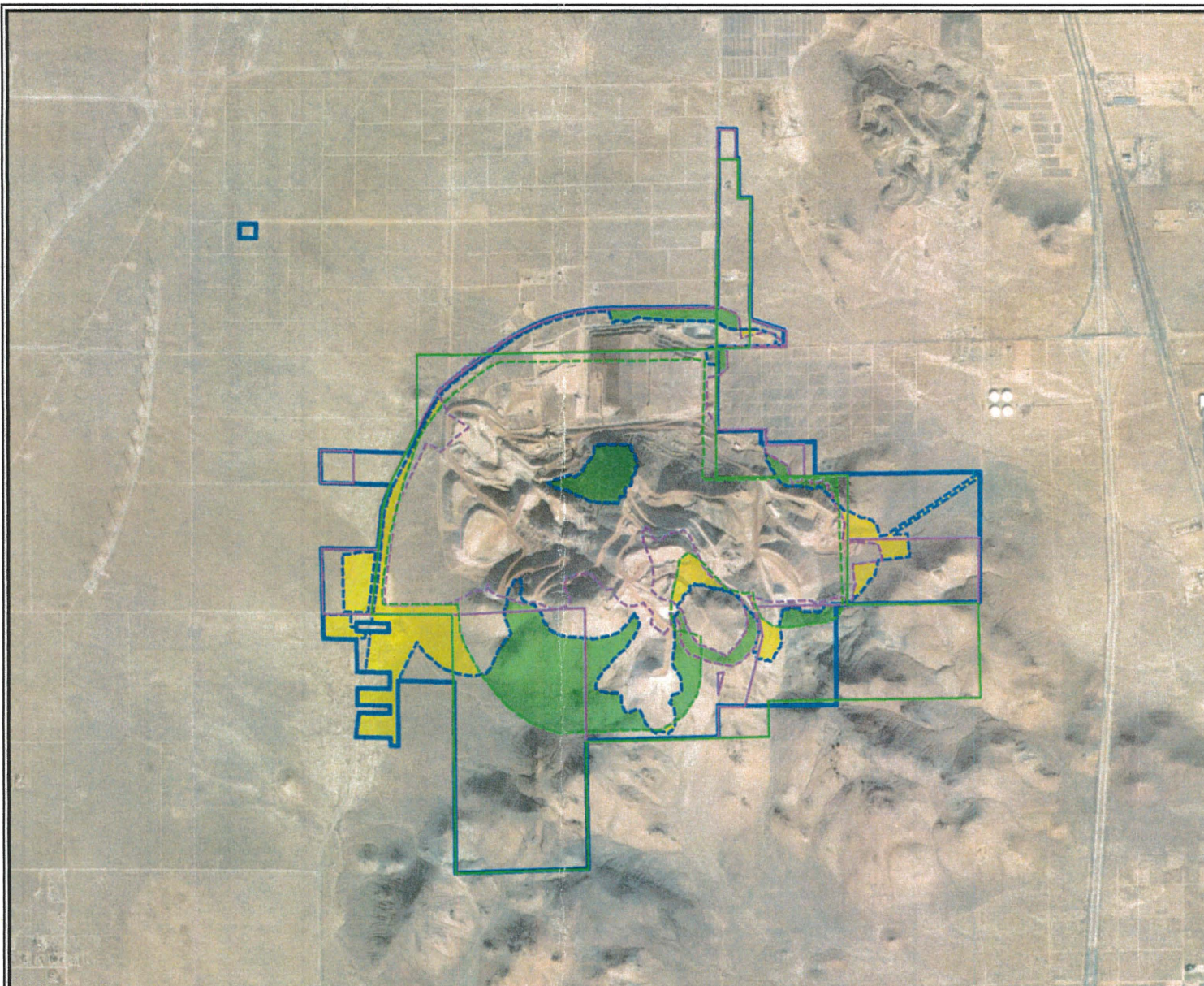


Approximate Scale 1 Inch = 10 Miles



T10N, R12W, PORTIONS OF SECTION 5-8
T10N, R12W, PORTIONS OF SECTION 1 AND 12
T11N, R12W, PORTIONS OF SECTION 31 AND 32
T11N, R13W, A PORTION OF SECTION 36
KERN COUNTY, CALIFORNIA
MOJAVE AND SOLEDAD MOUNTAIN USGS 7.5' QUADRANGLES
SURFACE MANAGEMENT: BLM 2017, WRI MODIFIED 2018
IMAGE SOURCE: ARCGIS ONLINE, WORLD STREET MAP,
PROVIDED BY WESTLAND RESOURCES, INC.

MODIFICATION OF: CUP 27, MAP NO. 196; CUP 41,
MAP NO. 213; CUP 22, MAP NO. 214



T10N, R12W, PORTIONS OF SECTION 5-8
 T10N, R12W, PORTIONS OF SECTION 1 AND 12
 T11N, R12W, PORTIONS OF SECTION 31 AND 32
 T11N, R13W, A PORTION OF SECTION 36

KERN COUNTY, CALIFORNIA

DATA SOURCE: SOLEDAD MOUNTAIN GOLDEN QUEEN MINING
 COMPANY, LLC. AND SESPE

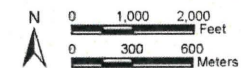
IMAGE SOURCE: ARCGIS ONLINE, WORLD IMAGERY,
 07/31/2016 & 03/07/2017

NOTE: 1997 PERMIT AREA AND PROJECT FOOTPRINT WERE DIGITIZED
 FROM EXHIBIT 1.0-2 (PROPERTY BOUNDARIES AND FEDERAL LANDS) OF
 THE 1997 EIR/EIS. THE 1997 ACREAGES PROVIDED IN THE LEGEND WERE
 SOURCED FROM TABLE 3-3 OF THE 2010 SEIR. THE 2019 MODIFIED
 PROJECT AREA AND ACREAGE PROVIDED IN THE LEGEND IS FROM
 KENTON R. MAEVERS (PLS 7850). THE 2019 MODIFIED PROJECT
 FOOTPRINT IS FROM GOLDEN QUEEN MINING COMPANY, LLC., AND THE
 2019 MODIFIED PROJECT FOOTPRINT ACREAGE PROVIDED IN THE
 LEGEND WAS CALCULATED WITH GIS BY WESTLAND RESOURCES, INC.

LEGEND

- NEW IMPACT AREA (155 AC.)
- NO LONGER IMPACTED (214 AC.)
- 2019 MODIFIED PROJECT AREA (2009 AC.)
- 2019 MODIFIED PROJECT FOOTPRINT (1188 AC.)
- 2010 SEIR PROJECT AREA (1440 AC.)
- 2010 SEIR PROJECT FOOTPRINT (905 AC.)
- 1997 EIR/EIS PROJECT AREA (1690 AC.)
- 1997 EIR/EIS PROJECT FOOTPRINT (930 AC.)

DATA PROVIDED BY WESTLAND RESOURCES, INC.



MODIFICATION OF: CUP 27, MAP NO. 196; CUP 41,
 MAP NO. 213; CUP 22, MAP NO. 214