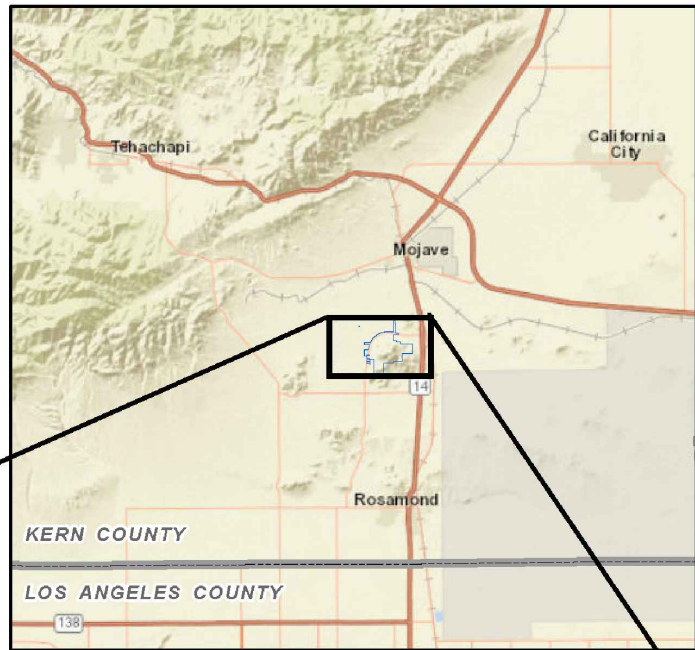


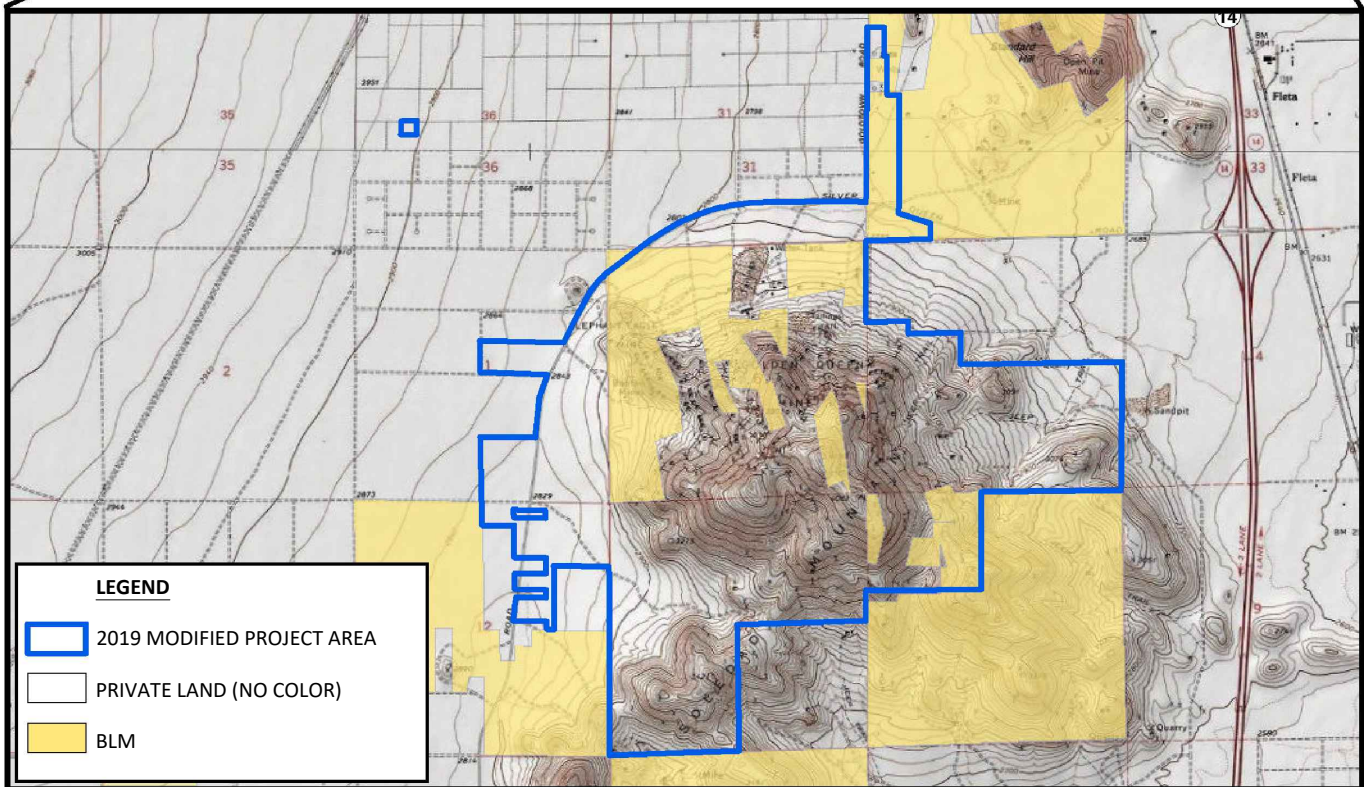
CALIFORNIA

PROJECT VICINITY

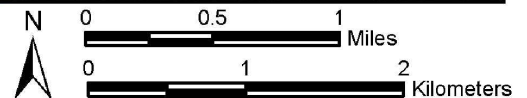


NOTE: MAPPING IS PROVIDED FOR ILLUSTRATIVE AND INFORMATIONAL PURPOSES ONLY. SEE MAPS OF THE PERMIT AREA AND PROPERTY BOUNDARIES PREPARED BY A CALIFORNIA-LICENSED PROFESSIONAL FOR LOCATION DETAILS.

Approximate Scale 1 Inch = 10 Miles



T10N, R12W, PORTIONS OF SECTION 5-8
T10N, R12W, PORTIONS OF SECTION 1 AND 12
T11N, R12W, PORTIONS OF SECTION 31 AND 32
T11N, R13W, A PORTION OF SECTION 36
KERN COUNTY, CALIFORNIA
MOJAVE AND SOLEDAD MOUNTAIN USGS 7.5' QUADRANGLES
SURFACE MANAGEMENT: BLM 2017, WRI MODIFIED 2018
IMAGE SOURCE: ARCGIS ONLINE, WORLD STREET MAP,
PROVIDED BY WESTLAND RESOURCES, INC.



GOLDEN QUEEN MINING COMPANY, LLC.

SOLEDAD MOUNTAIN PROJECT REGIONAL LOCATION MAP

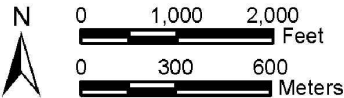
SCALE: HORIZ. AS SHOWN	FIGURE NUMBER 1
VERT. AS SHOWN	
DRAWN BY: G.CAMUS	DATE: DECEMBER 2019
CHECKED BY: BA	

T10N, R12W, PORTIONS OF SECTION 5-8
T10N, R12W, PORTIONS OF SECTION 1 AND 12
T11N, R12W, PORTIONS OF SECTION 31 AND 32
T11N, R13W, A PORTION OF SECTION 36
KERN COUNTY, CALIFORNIA
DATA SOURCE: SOLEDAD MOUNTAIN GOLDEN QUEEN MINING COMPANY, LLC. AND SESPE
IMAGE SOURCE: ARCGIS ONLINE, WORLD IMAGERY, 07/31/2016 & 03/07/2017

NOTE: 1997 PERMIT AREA AND PROJECT FOOTPRINT WERE DIGITIZED FROM EXHIBIT 1.0-2 (PROPERTY BOUNDARIES AND FEDERAL LANDS) OF THE 1997 EIR/EIS. THE 1997 ACREAGES PROVIDED IN THE LEGEND WERE SOURCED FROM TABLE 3-3 OF THE 2010 SEIR. THE 2019 MODIFIED PROJECT AREA AND ACREAGE PROVIDED IN THE LEGEND IS FROM KENTON R. MAEVERS (PLS 7850); THE 2019 MODIFIED PROJECT FOOTPRINT IS FROM GOLDEN QUEEN MINING COMPANY, LLC., AND THE 2019 MODIFIED PROJECT FOOTPRINT ACREAGE PROVIDED IN THE LEGEND WAS CALCULATED WITH GIS BY WESTLAND RESOURCES, INC.

- LEGEND**
- NEW IMPACT AREA (155 AC.)
 - NO LONGER IMPACTED (214 AC.)
 - 2019 MODIFIED PROJECT AREA (2009 AC.)
 - 2019 MODIFIED PROJECT FOOTPRINT (1188 AC.)
 - 2010 SEIR PROJECT AREA (1440 AC.)
 - 2010 SEIR PROJECT FOOTPRINT (905 AC.)
 - 1997 EIR/EIS PROJECT AREA (1690 AC.)
 - 1997 EIR/EIS PROJECT FOOTPRINT (930 AC.)

DATA PROVIDED BY WESTLAND RESOURCES, INC.



SESPE
CONSULTING, INC.

374 Poli Street, Suite 200 • Ventura, CA 93001
(805) 275-1515 • www.sespeconsulting.com

GOLDEN QUEEN MINING COMPANY, LLC.
SOLEDAD MOUNTAIN PROJECT
1997/2010/MODIFIED PROJECT COMPARISON

SCALE: HORIZ. AS SHOWN
VERT. AS SHOWN

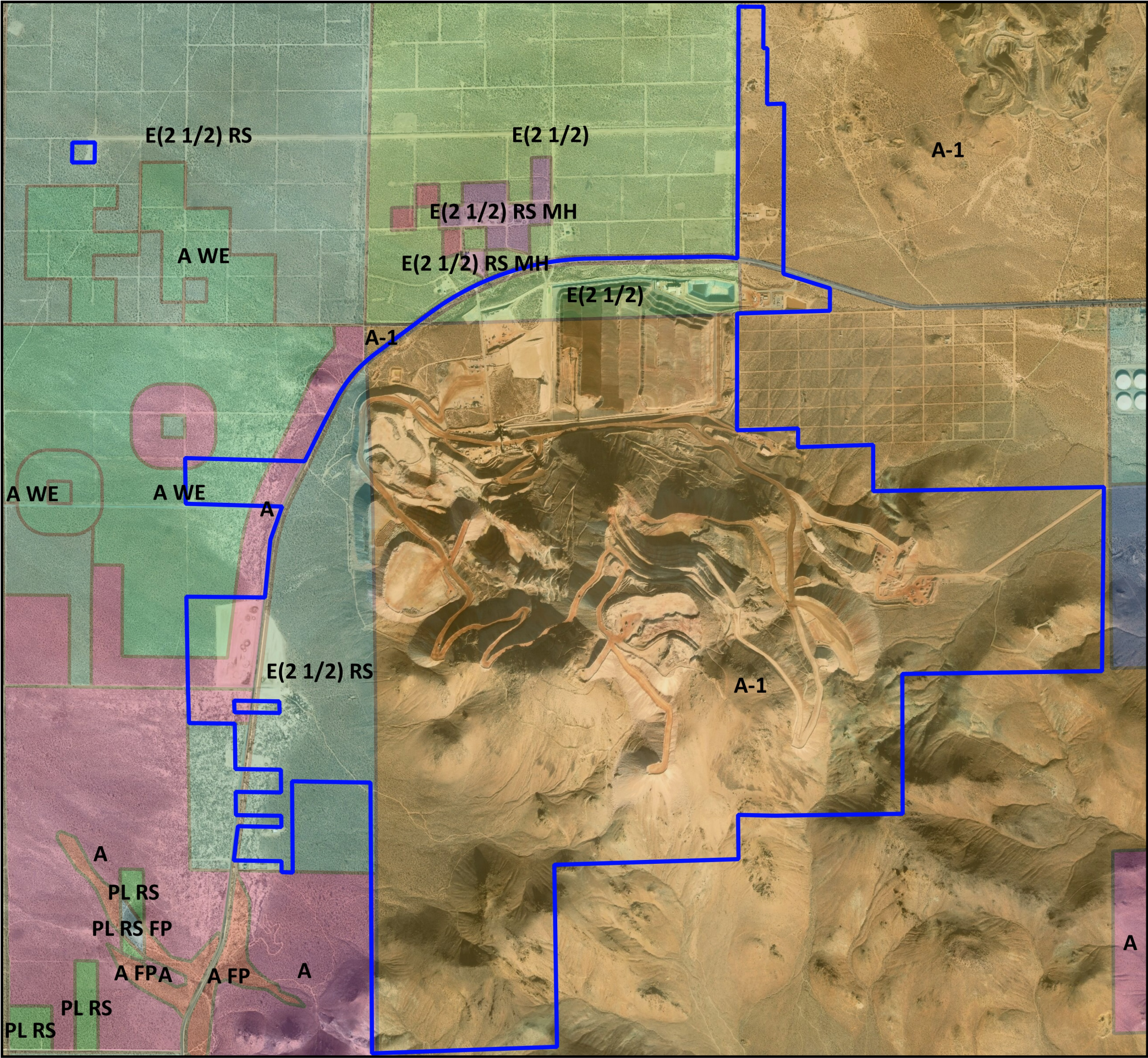
DRAWN BY: G.CAMUS

CHECKED BY: BA

FIGURE NUMBER

2

DATE: DECEMBER 2019



T10N, R12W, PORTIONS OF SECTION 5,6, 7, AND 8
T10N, R13W, PORTIONS OF SECTION 1 AND 12
T11N, R12W, PORTIONS OF SECTION 31 AND 32
T11N, R13W, A PORTION OF SECTION 36

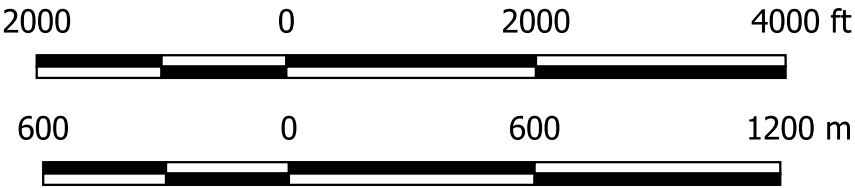
Kern County, California
Projection: California State Plane 1983 Zone V, NAD83
Globe Imagery provided by ESRI

Legend

2019 Modified Project Area

Zoning Codes

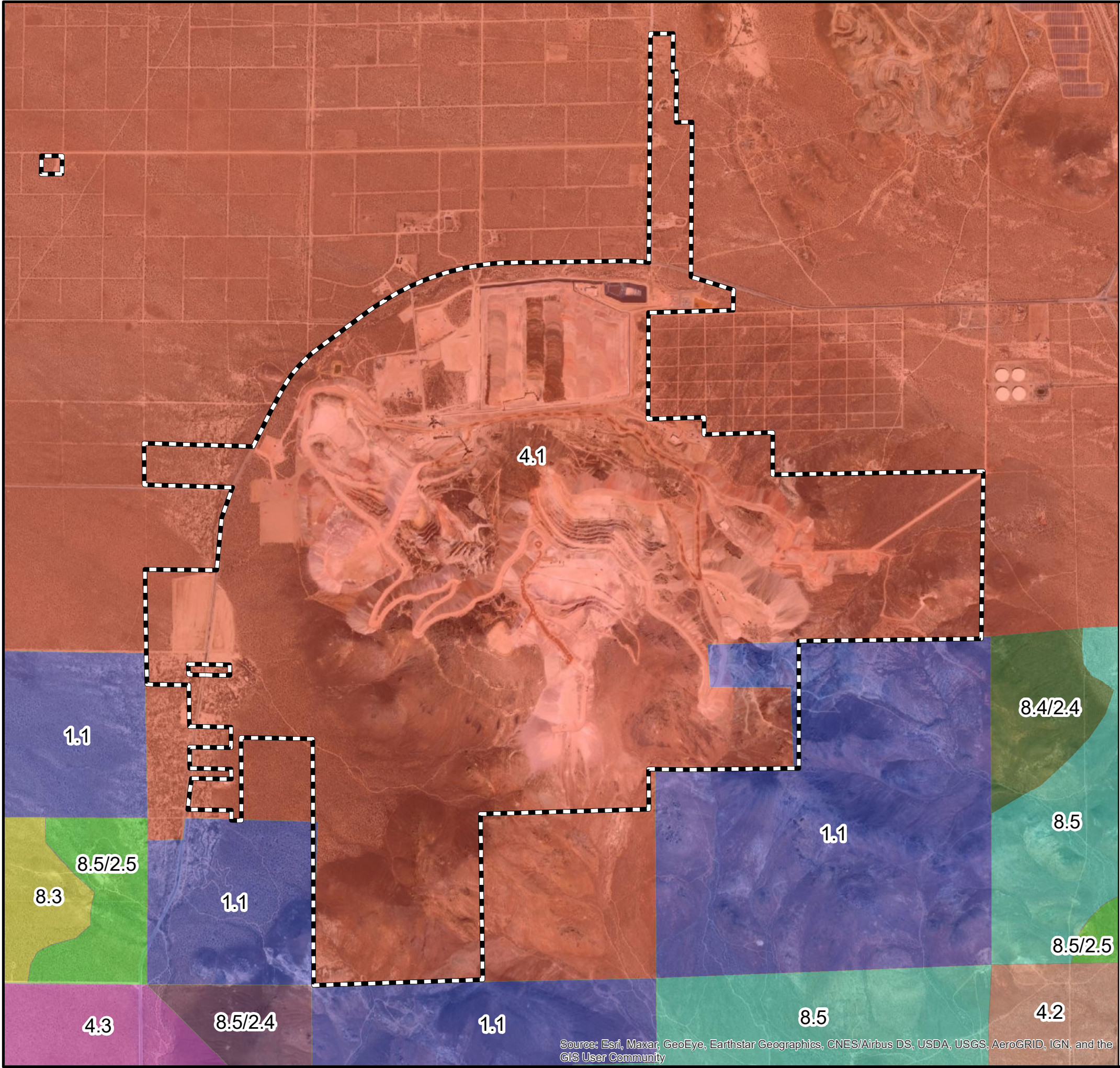
- A - Exclusive Agriculture
- A FP - Exclusive Agriculture/Floodplain Combining
- A WE - Exclusive Agriculture/Wind Energy Combining
- A-1 - Limited Agriculture
- E(2 1/2) - Estate 2.5 acres
- E(2 1/2) MH - Estate 2.5 acres/Mobilehome Combining
- E(2 1/2) RS - Estate 2.5 acres/Residential Suburban Combining
- E(2 1/2) RS MH - Estate 2.5 acres/Residential Suburban Combining/Mobilehome Combining
- E(5) RS - Estate 5 acres/Residential Suburban Combining
- PL RS - Platted Lands/Residential Suburban Combining
- PL RS FP - Platted Lands/Residential Suburban Combining/Floodplain Combining




Golden Queen Mining Company, LLC.
Soledad Mountain Project

Zoning Classification Map









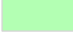
SCALE:	HORIZ.	AS SHOWN	FIGURE NUMBER
	VERT.	AS SHOWN	
DRAWN BY: HEE CHECKED BY: BGA			3

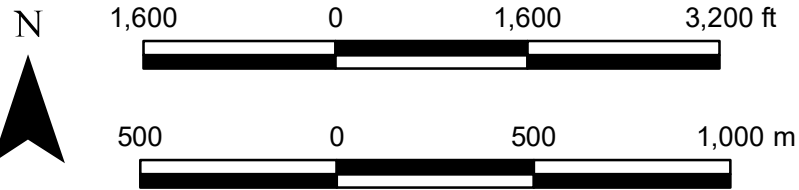


Legend

 2019 Modified Project Area

General Plan Designations

-  1.1 - State or Federal Land
-  4.1 - Accepted County Plan Areas
-  4.2 - Rural Community
-  4.3 - Specific Plan Required
-  8.3 - Extensive Agriculture (min. 20 Acre Parcel Size)
-  8.4/2.4 - Mineral and Petroleum (min. 5 acre parcel size)/Steep Slope
-  8.5 - Resource Management (min. 20 acre parcel size)
-  8.5/2.4 Resource Management (min. 20 acre parcel size)/Steep Slope
-  8.5/2.5 - Resource Management (min. 20 acre parcel size)/Flood Hazard



**Golden Queen Mining Company, LLC.
Soledad Mountain Project**

General Plan Classification Map

SCALE: HORIZ. AS SHOWN
VERT. AS SHOWN

DRAWN BY: GC CHECKED BY: GS

FIGURE
NUMBER

4

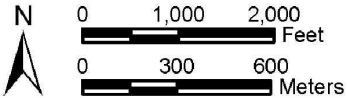
Source: Esri, Maxar, GeoEye, Earthstar Geographics, CNES/Airbus DS, USDA, USGS, AeroGRID, IGN, and the
GIS User Community

T10N, R12W, PORTIONS OF SECTION 5-8
T10N, R12W, PORTIONS OF SECTION 1 AND 12
T11N, R12W, PORTIONS OF SECTION 31 AND 32
T11N, R13W, A PORTION OF SECTION 36
KERN COUNTY, CALIFORNIA
DATA SOURCE: SOLEDAD MOUNTAIN, GOLDEN QUEEN MINING COMPANY, LLC., SESPE RECLAMATION PLAN PREFERRED ALTERNATIVE 2/19/2019 AND 6/7/2019, END OF MINE LIFE 7/2/2019
IMAGE SOURCE: ARCGIS ONLINE, WORLD IMAGERY, 07/31/2016 & 03/07/20117
PROVIDED BY WESTLAND RESOURCES, INC.

- NOTE:
1. MAPPING IS PROVIDED FOR ILLUSTRATIVE AND INFORMATIONAL PURPOSES ONLY.
 2. THE 2019 PROJECT BOUNDARY AND ACREAGE PROVIDED IN THE LEGEND IS FROM KENTON R. MAEVERS (PLS 7850); THE 2019 PROJECT FOOTPRINT IS FROM GOLDEN QUEEN MINING COMPANY, LLC. AND THE 2019 PROJECT FOOTPRINT ACREAGE PROVIDED IN THE LEGEND WAS CALCULATED IN GIS BY WESTLAND RESOURCES INC.

LEGEND

- PROJECT BOUNDARY (2009 AC.)
- TOTAL DISTURBED AREA (1156 AC.)
- PIT (302AC.)
- SURGE PILES (292 AC.)
- HEAP LEACH PAD (291 AC.)
- EXISTING CLAY BORROW AREA (25 AC.)
- APPROXIMATE EXPANDED CLAY BORROW AREA (43 AC.)
- WORKING AREA AND ROADS (307 AC.)
- GROWTH MEDIA STOCKPILES (2 AC.)
- REVEGETATION TEST PLOT (2 AC.)
- WELL SITES (3 AC.)



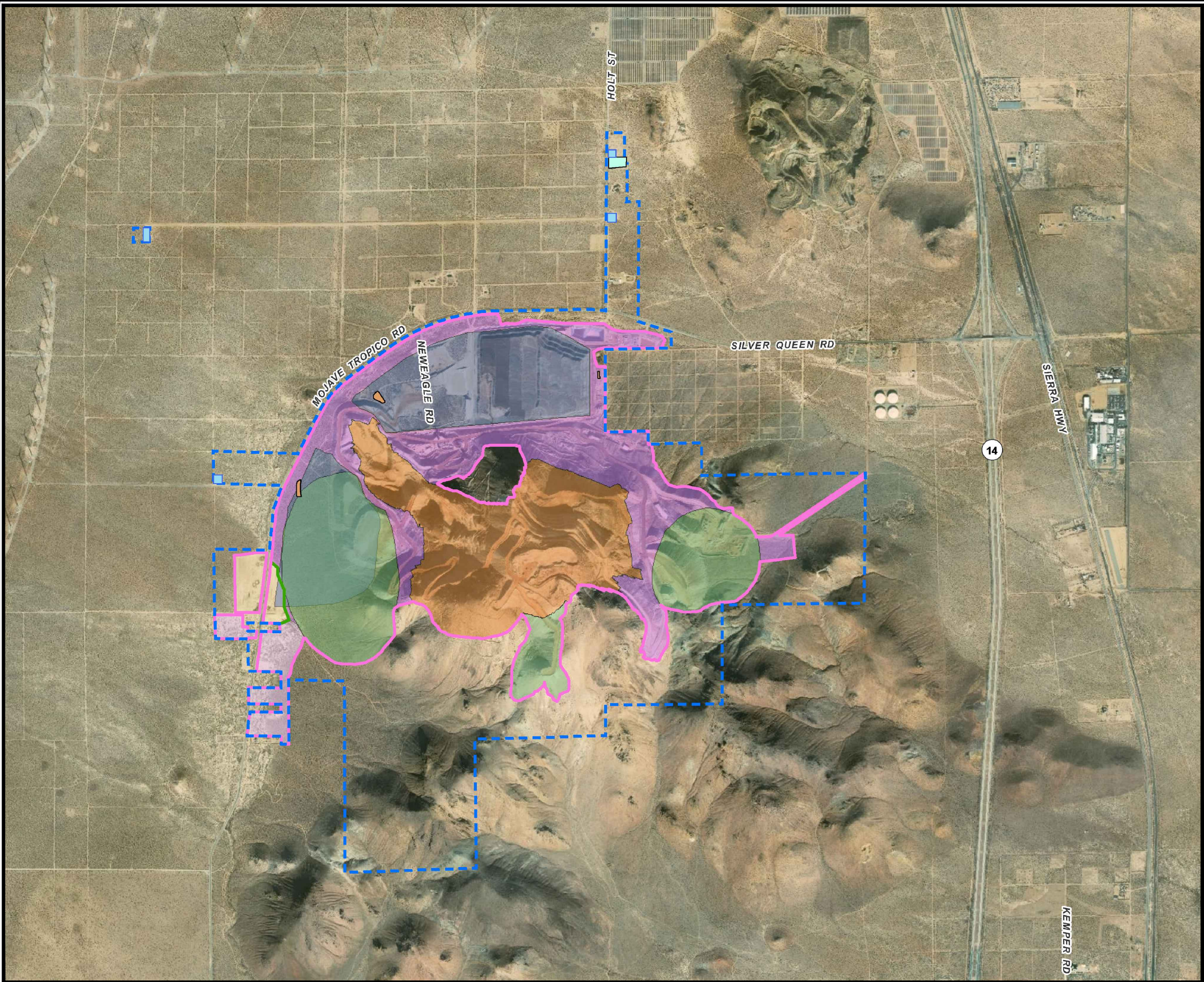
SESPE
CONSULTING, INC.

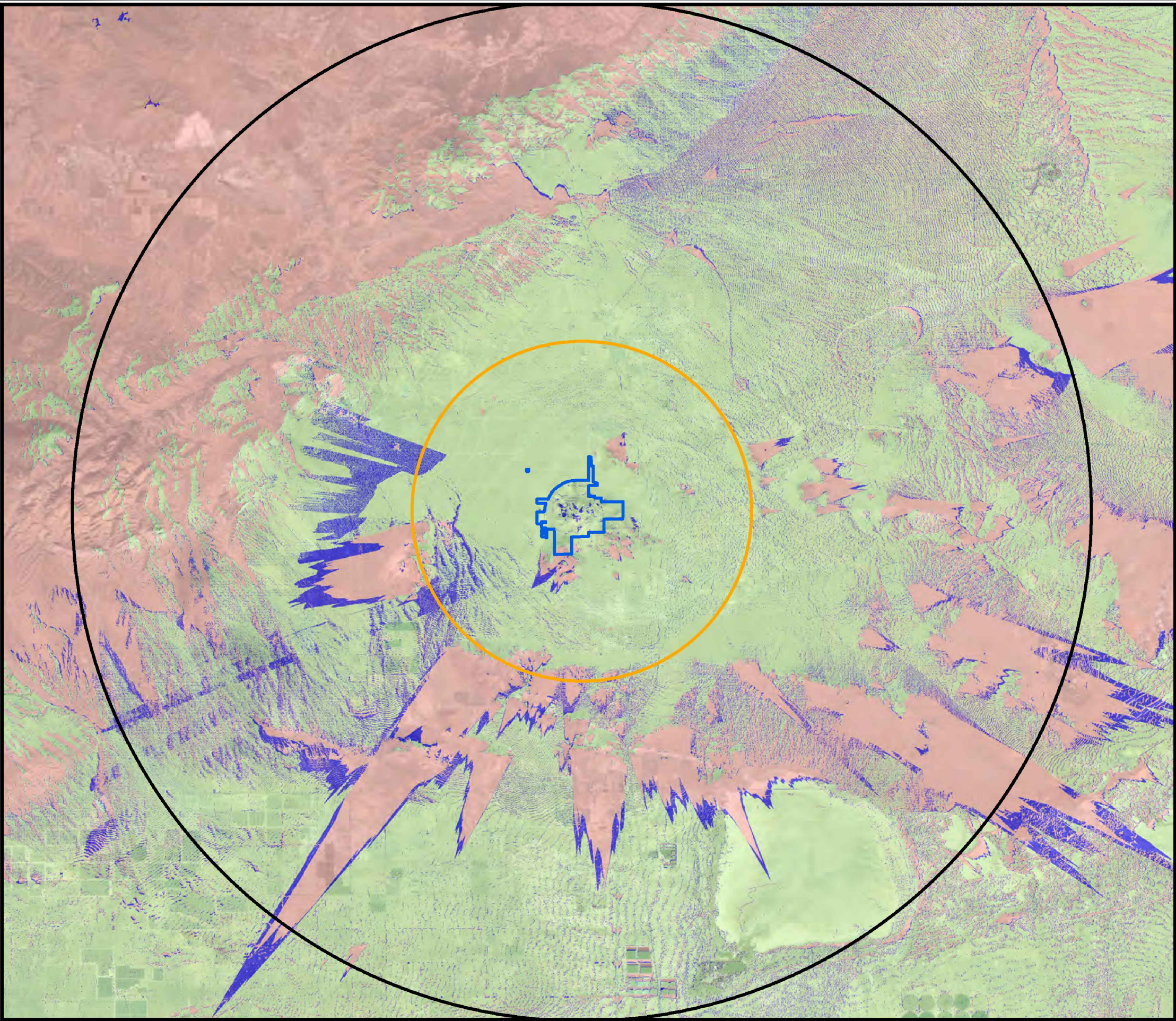
374 Poli Street, Suite 200 • Ventura, CA 93001
(805) 275-1515 • www.sespeconsulting.com

GOLDEN QUEEN MINING COMPANY, LLC.
SOLEDAD MOUNTAIN PROJECT
MODIFIED PROJECT OVERVIEW - END OF EXCAVATION

SCALE: HORIZ. AS SHOWN
VERT. AS SHOWN
DRAWN BY: G.CAMUS
CHECKED BY: BA

FIGURE NUMBER
5
DATE: DECEMBER 2019

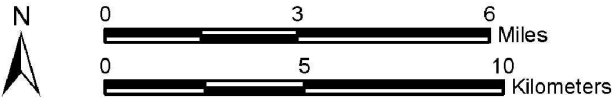




T10N, R12W, PORTIONS OF SECTION 5-8
T10N, R12W, PORTIONS OF SECTION 1 AND 12
T11N, R12W, PORTIONS OF SECTION 31 AND 32
T11N, R13W, A PORTION OF SECTION 36
KERN COUNTY, CALIFORNIA
DATA SOURCE: SOLEDAD MOUNTAIN, GOLDEN QUEEN MINING COMPANY,
LLC., JULY 2019
IMAGE SOURCE: ARCGIS ONLINE, WORLD IMAGERY, 07/31/2016 &
03/07/20117
PROVIDED BY WESTLAND RESOURCES, INC.

LEGEND

- 2019 MODIFIED PROJECT AREA
- NOT VISIBLE
- BASELINE VISIBLE (1997 PROJECT FOOTPRINT)
- ADDITIONAL AREA VISIBLE (MODIFIED PROJECT FOOTPRINT)
- 5 MILE BUFFER
- 15 MILE BUFFER



SESPE
CONSULTING, INC.

374 Poli Street, Suite 200 • Ventura, CA 93001
(805) 275-1515 • www.sespeconsulting.com

GOLDEN QUEEN MINING COMPANY, LLC.
SOLEDAD MOUNTAIN PROJECT
VISUAL ASSESSMENT BASELINE COMPARISON

SCALE: HORIZ. AS SHOWN
VERT. AS SHOWN
DRAWN BY: G.CAMUS
CHECKED BY: BA

FIGURE NUMBER
6
DATE: DECEMBER 2019

